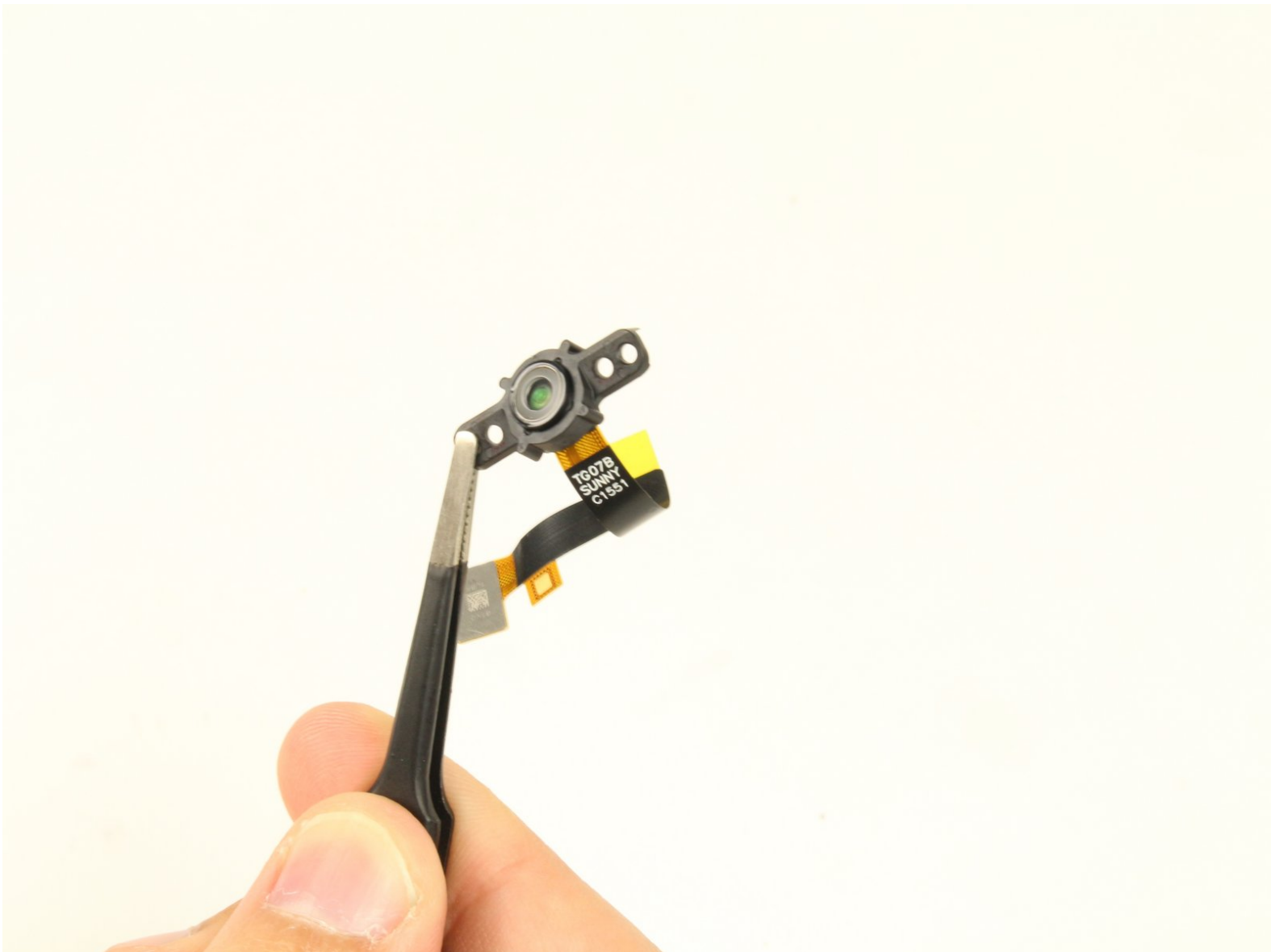




HTC Vive Camera Replacement

This guide will show you how to replace the HTC Vive's camera.

Written By: Caleb Watts



INTRODUCTION

The HTC Vive's camera may send distorted or inaccurate images to the Vive. This guide will show you how to replace the Vive's camera.

TOOLS:

- [T6 Torx Screwdriver](#) (1)
 - [Prying and Opening Tool Assortment](#) (1)
 - [Phillips #00 Screwdriver](#) (1)
 - [Tweezers](#) (1)
-

Step 1 — Straps and Cables



- Slide the HTC panel covering the cables forward, away from the Vive.
- Gently pull on each of the four connectors to remove the sound and Three-in-One cables.

Step 2



- Undo the hook and loop tape on the straps.
- Slide the ends of the straps through the hinge loops.

Step 3 — Facerest



- Pull the facerest cushion off away from the Vive, separating the hook and loop tape.

Step 4



- Use a T6 Torx Screwdriver to remove either of the two 12mm hinge screws holding the two hinges in place.
- Allow the hinge to fall away once the screw is removed.
- Repeat for the opposite side.

This document was generated on 2020-01-15 07:51:03 PM (MST).

Step 5



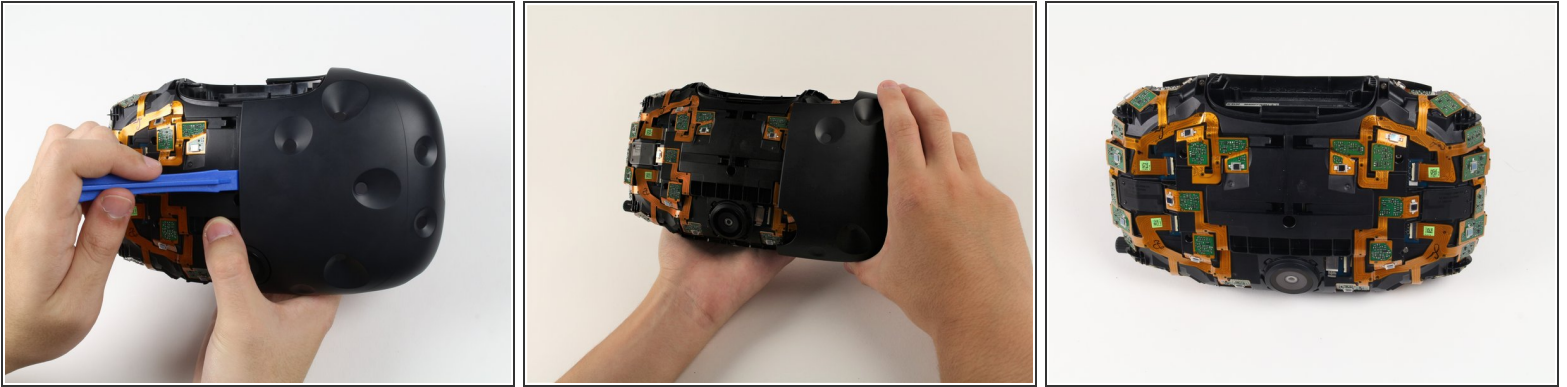
- Slide the plastic facerest away from the device.

Step 6 — Outer Shell



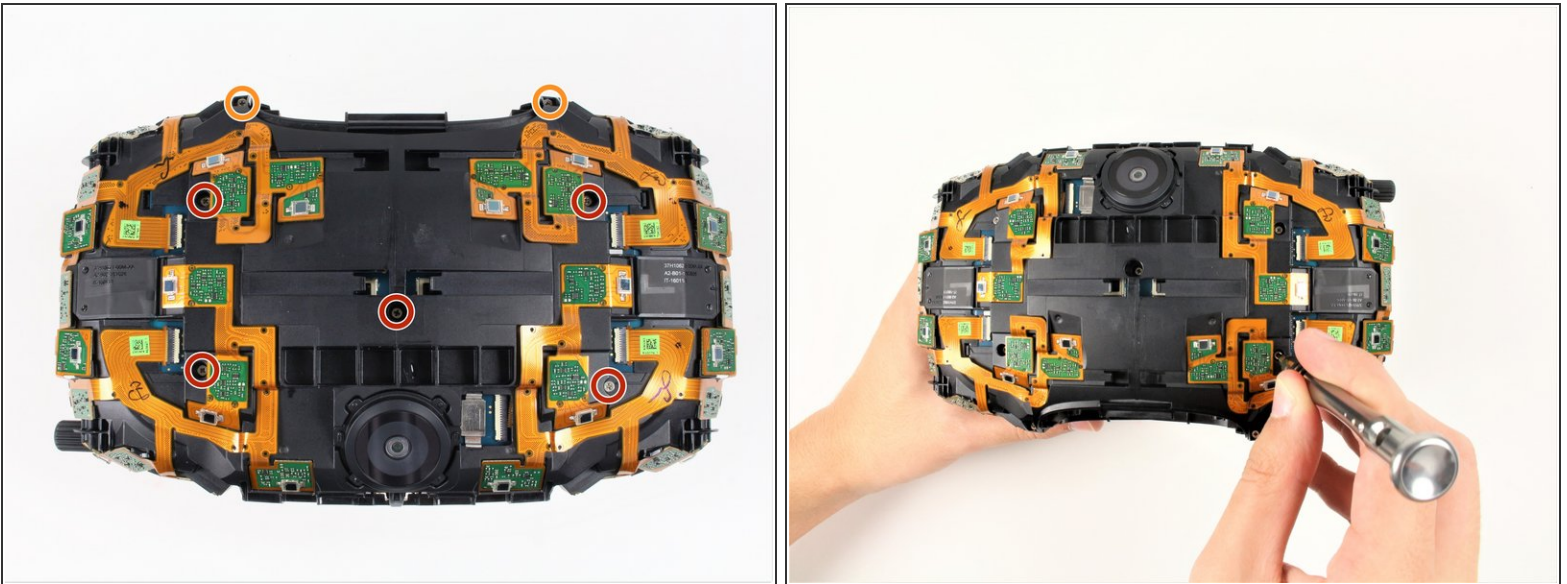
- Orient the Vive so that the camera is facing towards you and the connector ports are facing upwards.
- There are four screws you need to remove that are covered with small black stickers (two on top, two on bottom).
- Use a plastic opening tool to gently pry up the left side of the outer sheath.
 - ⓘ If the left sheath is glued down, slide your plastic opening tool along the middle seam to break the bond.
- Slide the left side of the sheath outwards.

Step 7



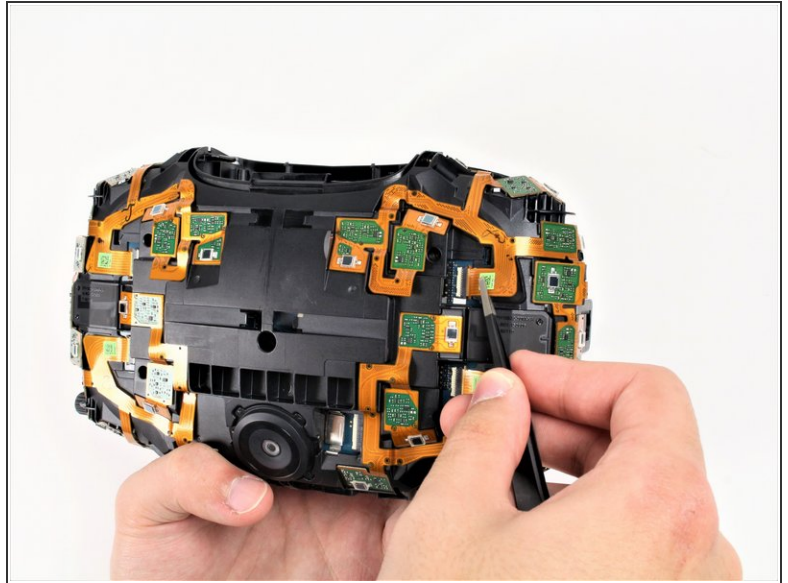
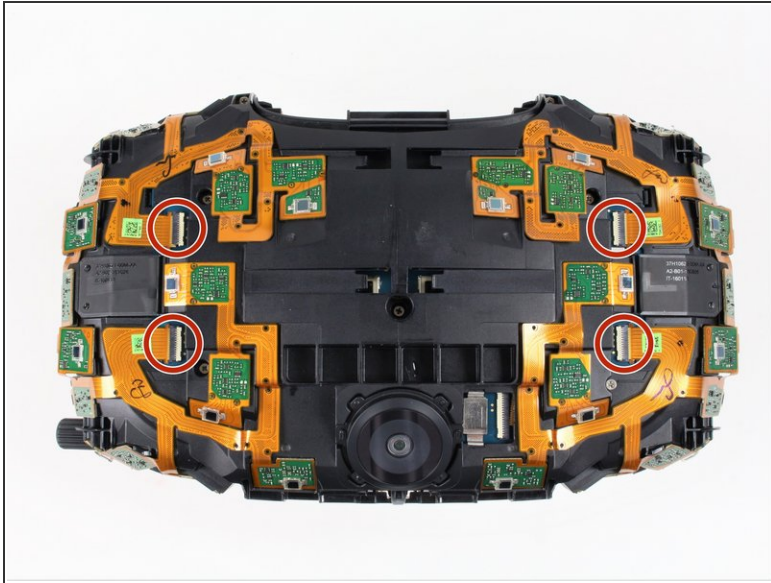
- Slide a plastic opening tool underneath the right side of the sheath to remove any remaining glue.
- Using the plastic opening tool, pry the right side of the sheath upwards slightly.
- Using your hands, slide the right side of the sheath outwards.

Step 8 — Sensor Array Assembly



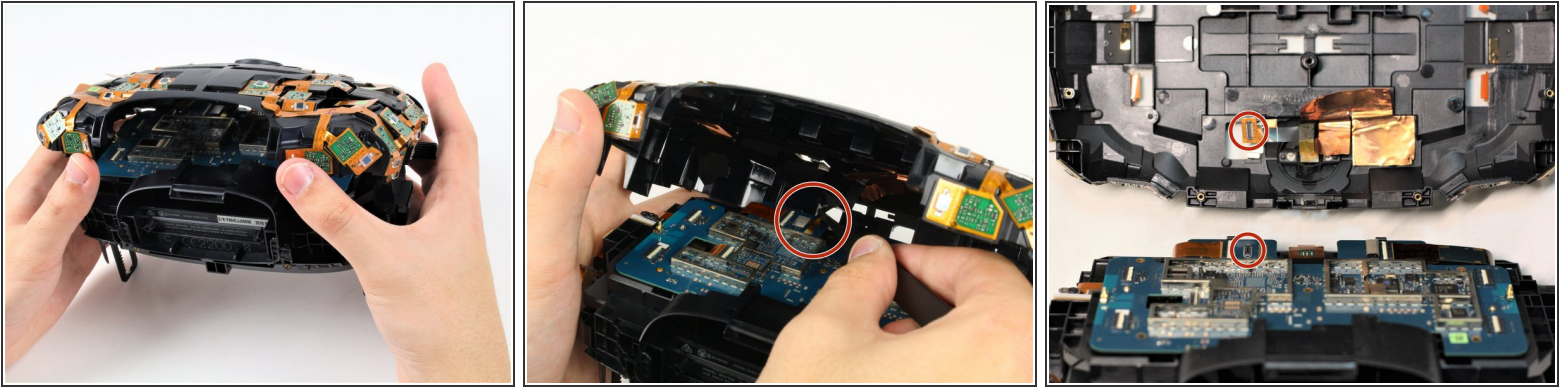
- Remove the five 4mm Philips #00 screws holding the sensor array to the motherboard.
- Remove the two 4mm Philips #00 screws holding the sensor array to the midframe.

Step 9



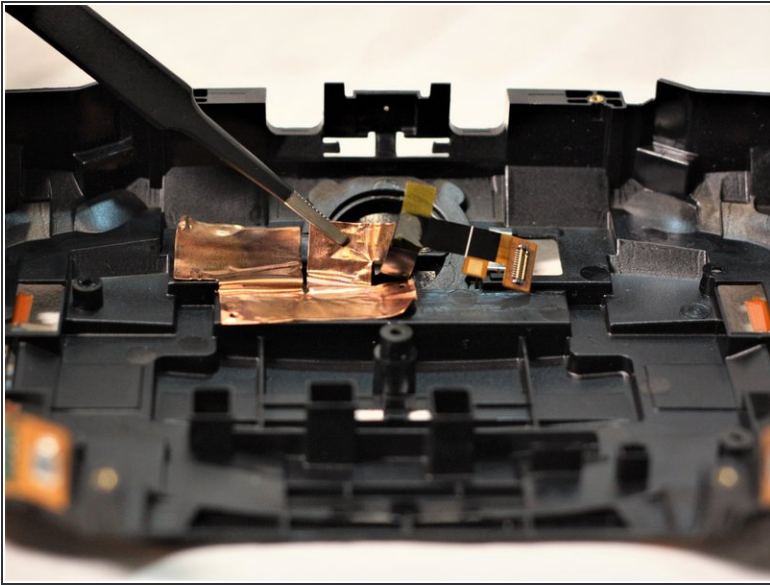
- Using a pair of ESD safe tweezers, gently pull the four ribbon cables out horizontally from the sensor array.

Step 10



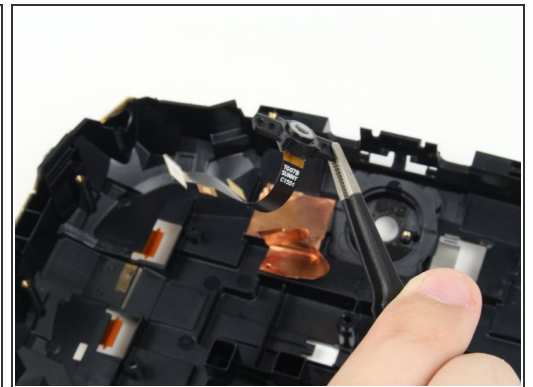
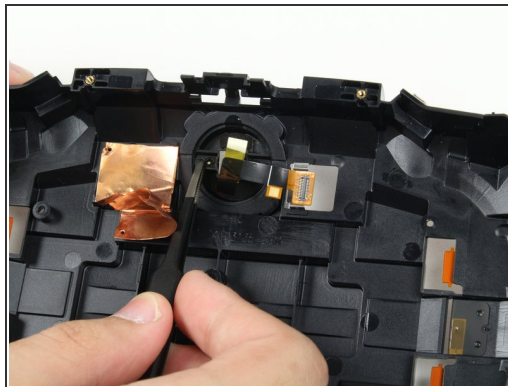
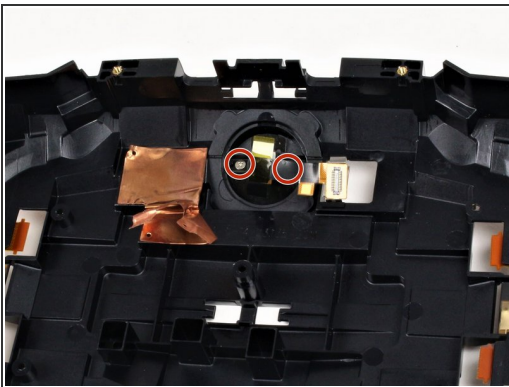
- ⚠ Be careful not to lift the sensor array too far from the rest of the device because the camera ribbon cable may tear.
- Lift the sensor array away from the rest of the Vive until the camera cable tugs back and hold it in place.
- ⚠ The camera ribbon cable must be pulled out of its socket vertically, as opposed to all other ribbon cables which slide out horizontally.
- Disconnect the camera by lifting its ribbon cable up and away from the motherboard using a pair of ESD safe tweezers.
- Lift the sensor array upwards away from the motherboard to separate the array from the device fully.

Step 11 — Camera



- Flip the sensor array over 180 degrees.
- Using tweezers, move the copper tape covering the camera to the side so you can see the screws holding the camera.

Step 12



- Remove the two 2mm #00 Philips screws securing the camera.
- Use tweezers to pull the now freed camera from its slot.

To reassemble your device, follow these instructions in reverse order.