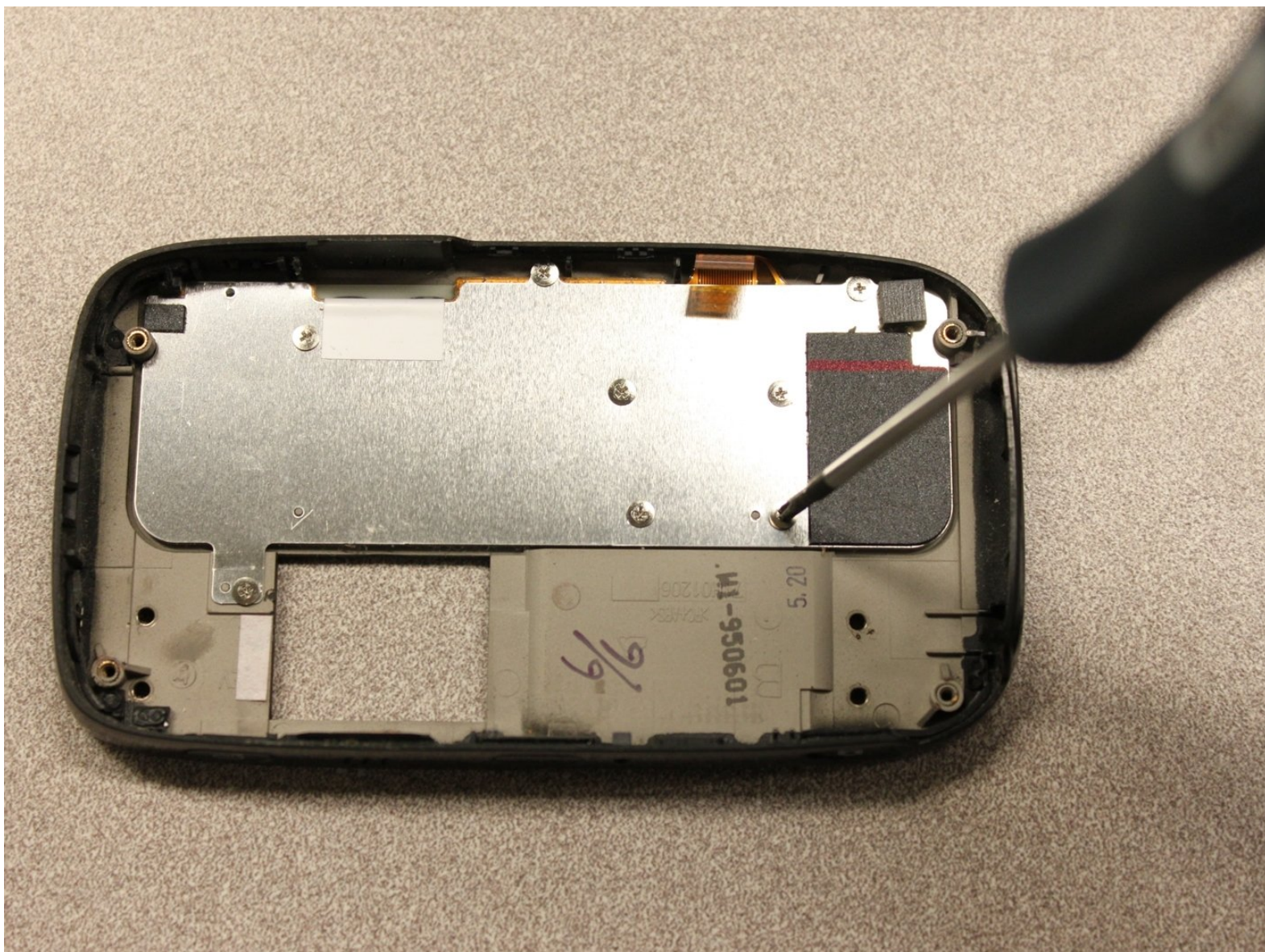




HTC Wizard 200 Keypad Replacement

Installation of the Keypad on the HTC Wizard 200.

Written By: Kyle Champ



INTRODUCTION

This guide will explain how to install / remove the keypad from the HTC Wizard 200.



TOOLS:

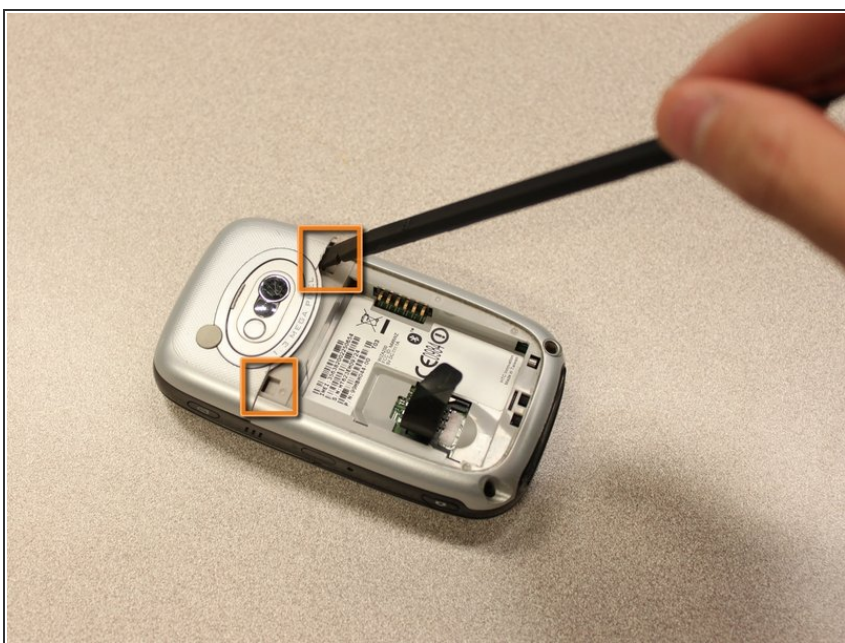
- [iFixit Opening Tools](#) (1)
 - [Spudger](#) (1)
 - [T5 Torx Screwdriver](#) (1)
-

Step 1 — Battery



- Remove the back case with your fingernail to expose the battery. (Not shown in picture)
- Pull the black tab to remove the battery.

Step 2 — Back Panel



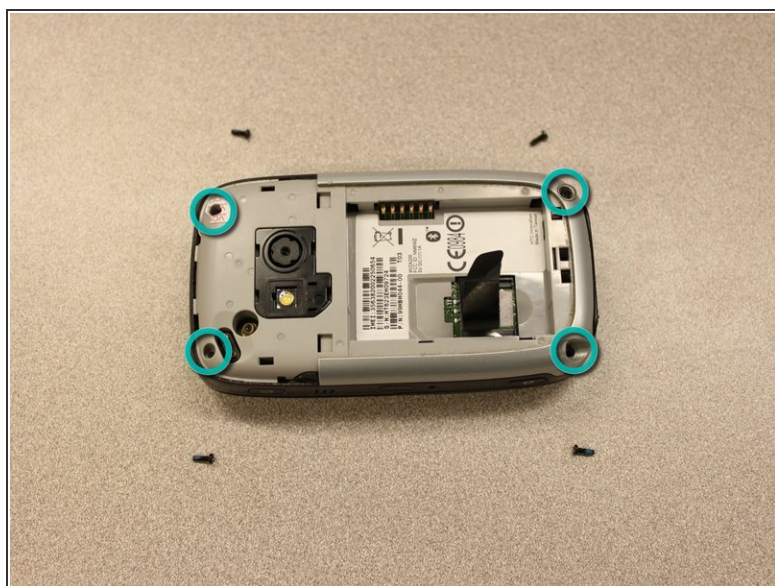
- Use a spudger to begin removal of the camera cover by inserting the flat end into the two notches and gently pry them up one at a time.

Step 3



- Work the spudger around the edge of the camera cover to release the clips.

Step 4



- Use a [T5 Torx screwdriver](#) to remove four 6mm screws that secure the back panel to the main body.
- ⓘ There is a screw under the "void" sticker.

Step 5



i Device rotated 180 degrees.

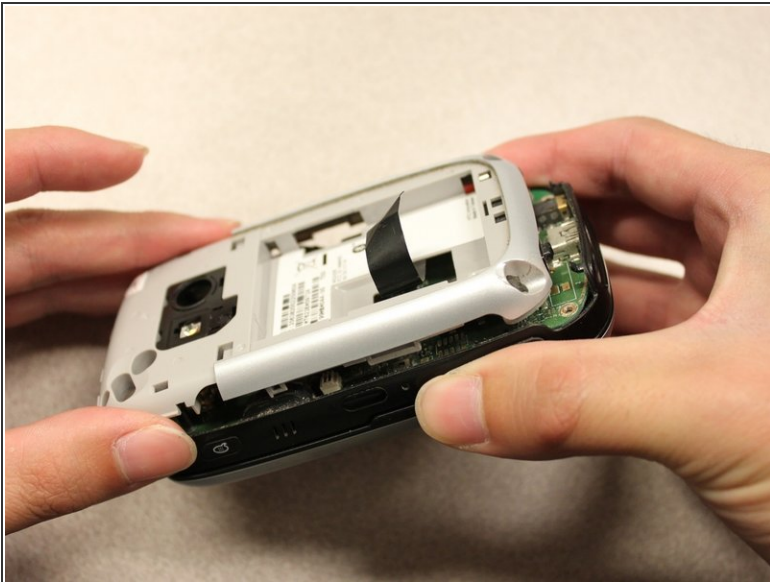
- Insert the flat end of a spudger into the crack between the front and rear cover.
- Once you have enough of a gap to fit a plastic opening tool into it, use the opening tool to release the clips.

Step 6



- Use the plastic opening tool to continue releasing the clips until you have worked your way around the edge.

Step 7



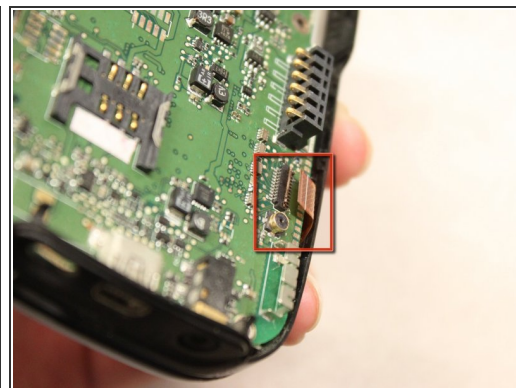
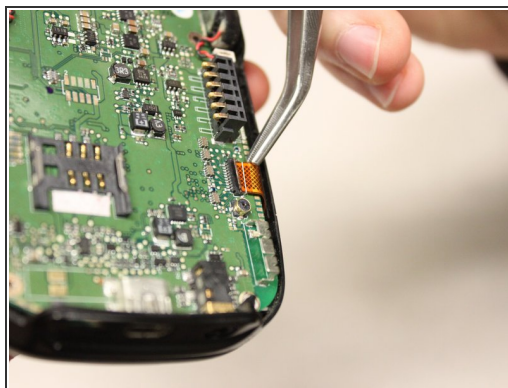
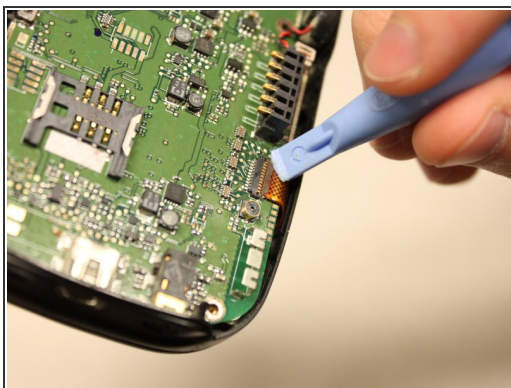
- Pull off the back case panel.

Step 8 — Motherboard



- ⓘ Device rotated 180 degrees.
- Use the spudger to pry off the camera.

Step 9



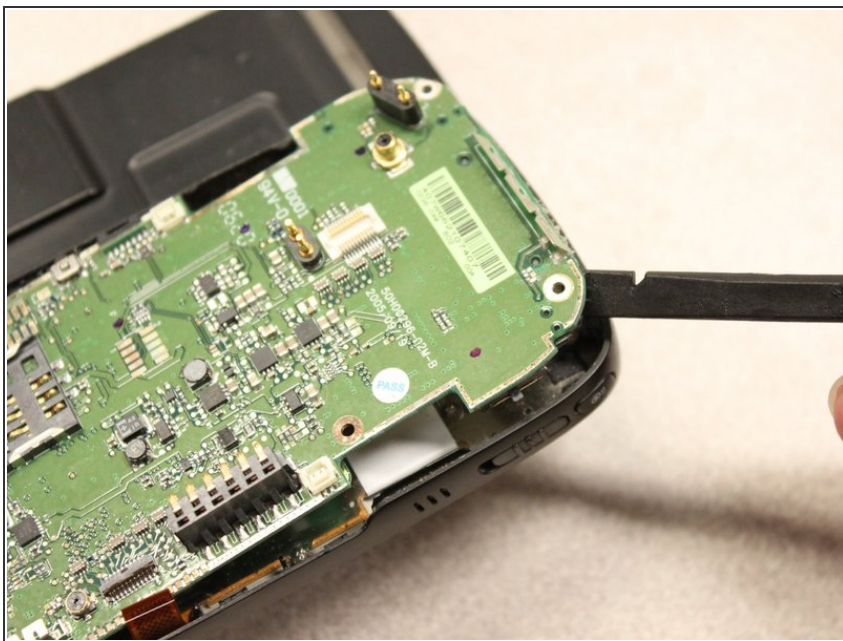
- ⓘ Device rotated 90 degrees CCW.
- ⓘ You may need to remove a strip of orange anti-static tape (not pictured).
- Flip up the connector latch.
- Use the tweezers to detach the flexible connection.

Step 10



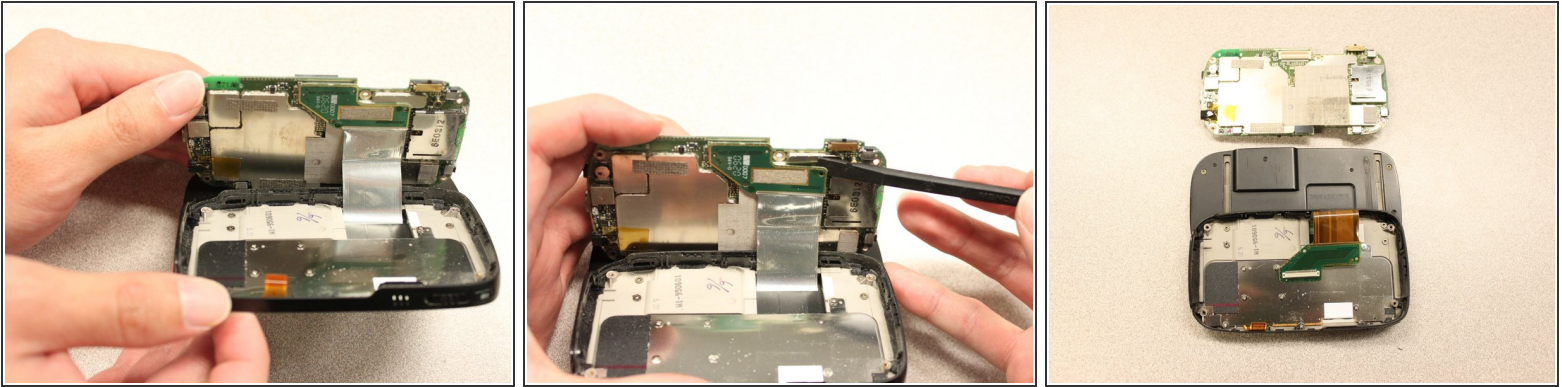
- ⓘ Device rotated 90 degrees CW.
- Slide the screen slider into the open position.

Step 11



- Use the spudger to push out the motherboard.

Step 12



- Use your hands to gently expose the underside of the motherboard.
- Use the spudger to pull off the flexible connection.

⚠ Be careful not to pull apart the motherboard connection quickly, as the connection and cables could be damaged.

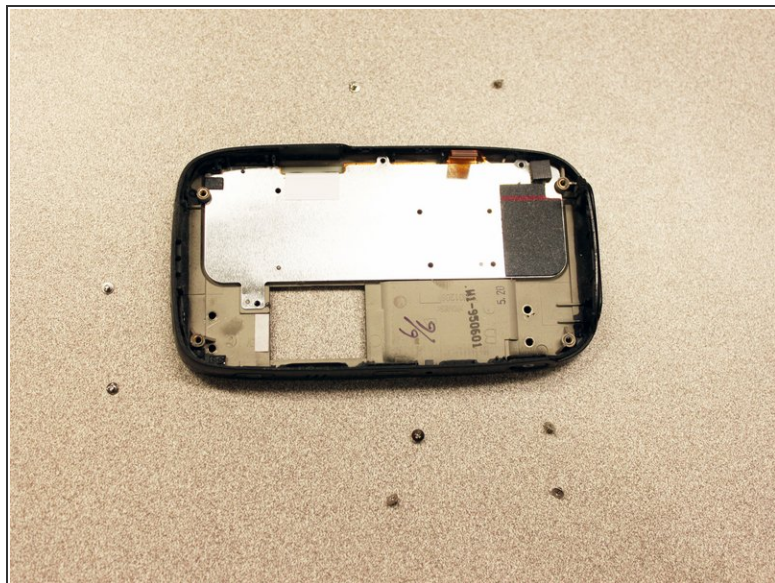
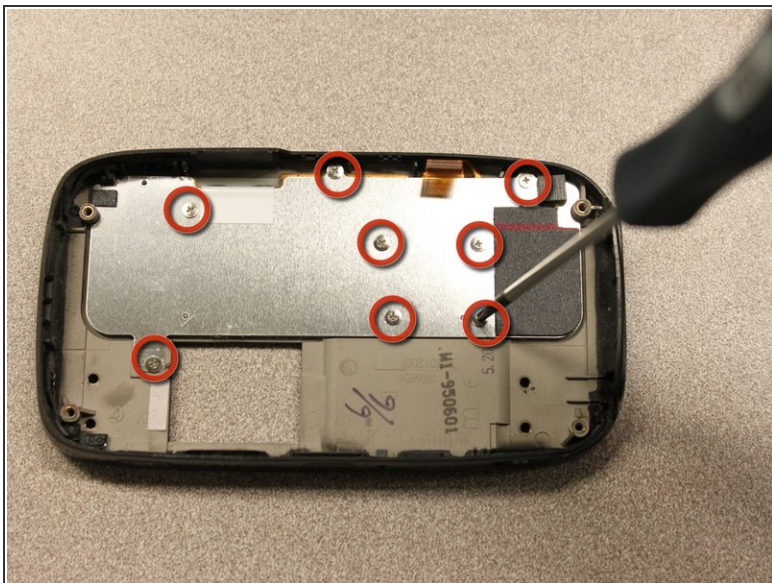
Step 13 — Keyboard Slider



i Device rotated 180 degrees CW.

- Use the T5 Torx screwdriver to remove four 5mm screws that secure the keyboard slider to the main body.

Step 14 — Keypad



- Use a screwdriver to remove eight 2mm Phillips screws that secure the keypad to the keyboard slider.

Step 15



- Use the plastic opening tool to gently lift up the keypad.

To reassemble your device, follow these instructions in reverse order.