



HTC myTouch 3G Camera Replacement

Replacing the camera in your HTC myTouch 3G.

Written By: Tony Tran



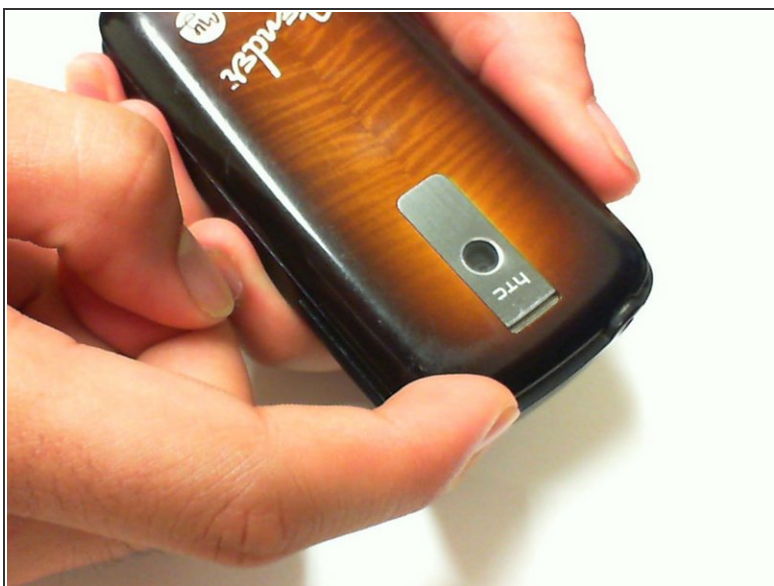
INTRODUCTION

This guide demonstrates the procedure for replacing a faulty camera in the HTC myTouch 3G.

TOOLS:

- [Phillips #00 Screwdriver](#) (1)
 - [Flathead 3/32" or 2.5 mm Screwdriver](#) (1)
 - [Phillips #0 Screwdriver](#) (1)
 - [T5 Torx Screwdriver](#) (1)
-

Step 1 — Motherboard



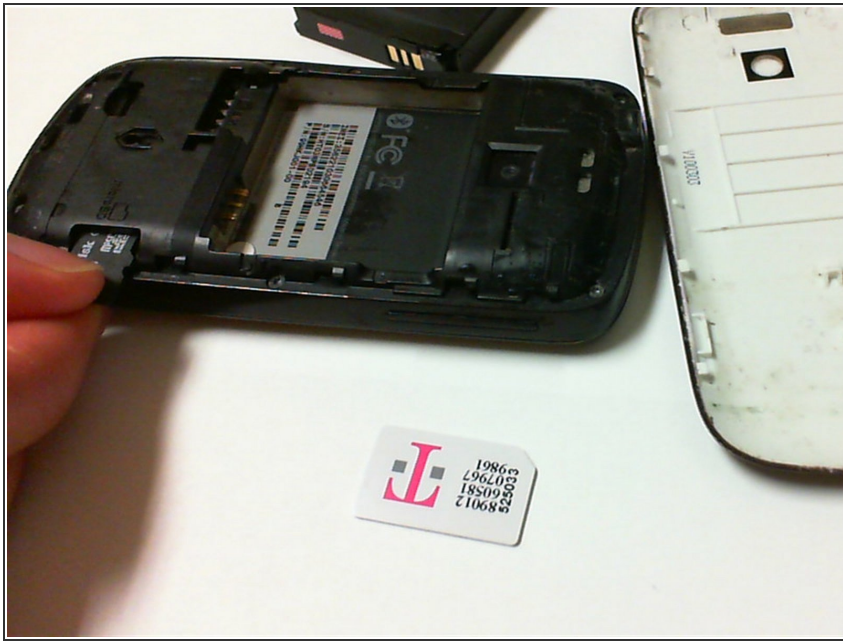
- Press each thumb on both sides of the upper corners and apply pressure downwards.
- Then, while still applying pressure, slide the back cover down.

Step 2



- Remove the Battery.
- Remove the SIM card.

Step 3



- Push the SD card in and the SD card should pop loose.
- Pull the SD card out.

Step 4



- Remove the four 6-mm T5 torx screws in the four corners.
- Remove the two 4-mm T5 torx screws in the middle.

Step 5



- Use the existing gap, to dislodge the antenna cover from the phone.
- Pull out the antenna cover to have access to the motherboard.

Step 6



- Use a precision flathead screwdriver to dislodge the back plate from the phone by carefully inserting it into the slit between the frame and cover and pushing downward.
- Go around the edges of the phone, and continue to dislodge the back plate from the front part of the phone.

Step 7



- Remove the 3-mm Phillips head screw located on the side of the bottom left-hand corner of the phone.
- Remove the 3-mm Phillips head screw located on the top right-hand corner of the phone.
- ⓘ Do not remove any of the screws located on the actual circuit boards.

Step 8



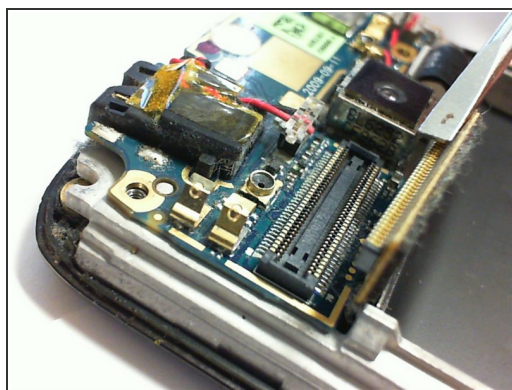
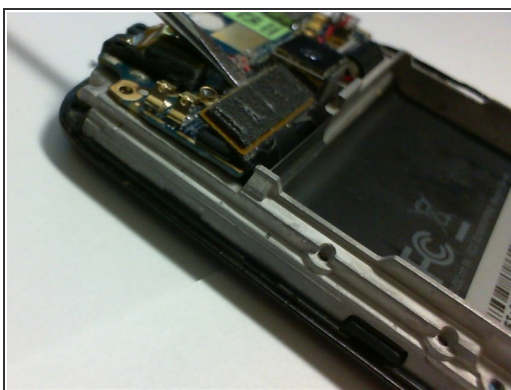
- Place a finger between the circuit board and the front cover, and lift up gently.
- Continue separating the circuit board from the front cover and screen and watch for a ribbon cable to detach.
- Finish separating the circuit board from the front panel.

Step 9 — Camera



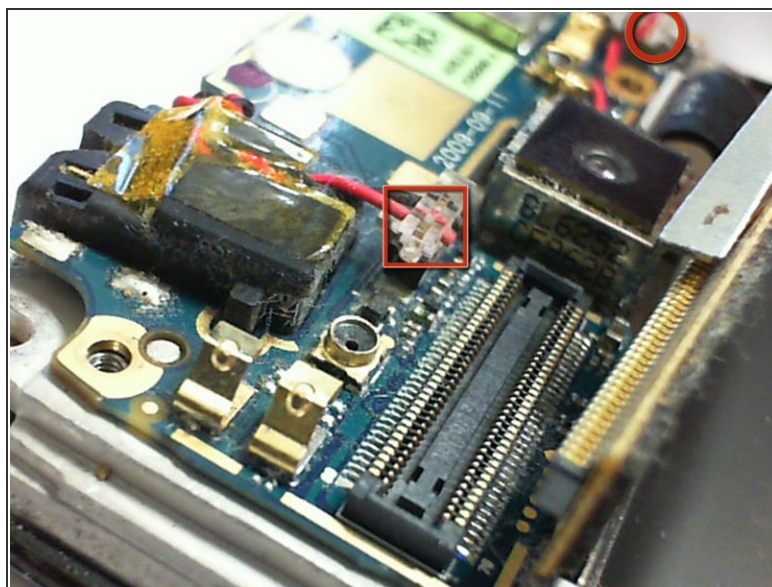
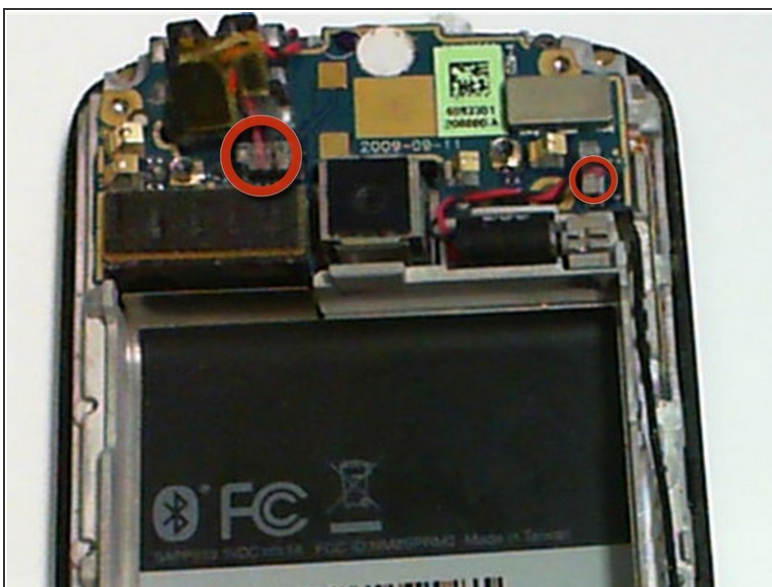
- Turn the piece housing the circuit boards over to the side with the mounted camera.
- Remove the three 3-mm Phillips head screws located on the top circuit board.

Step 10



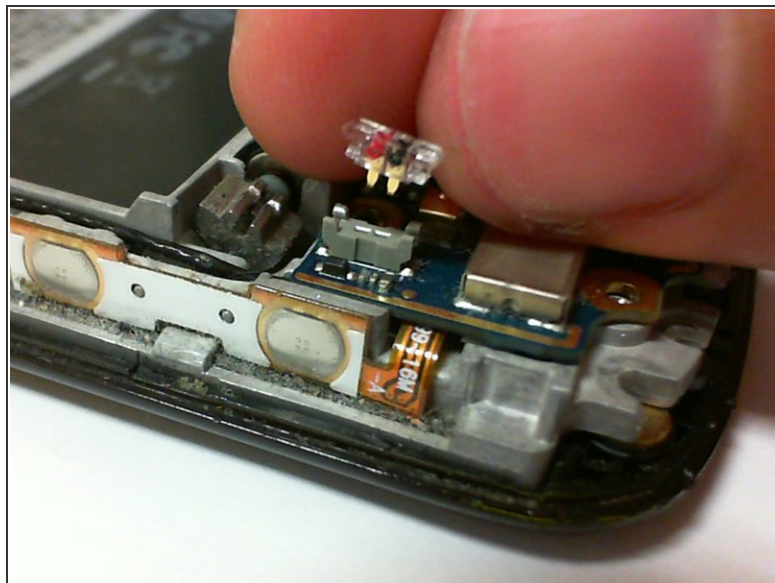
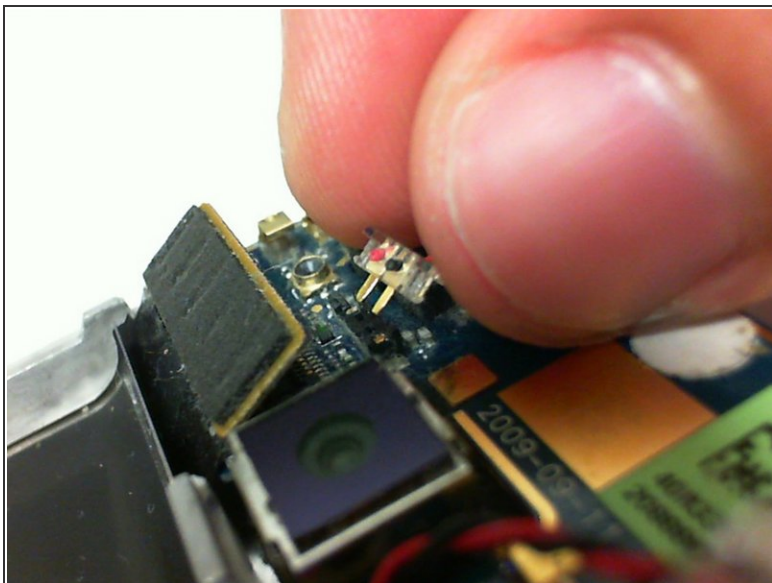
- Locate the ribbon cable on the top circuit board.
- Disconnect the ribbon cable by using a precision screwdriver to flip open the ribbon cable.

Step 11



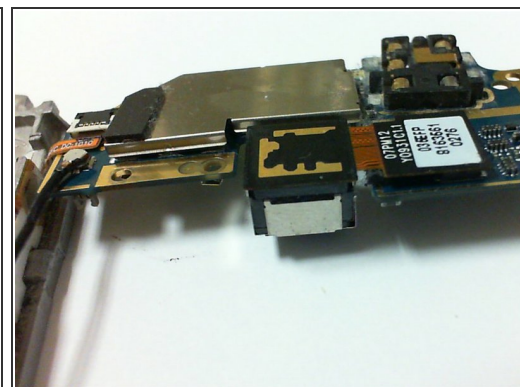
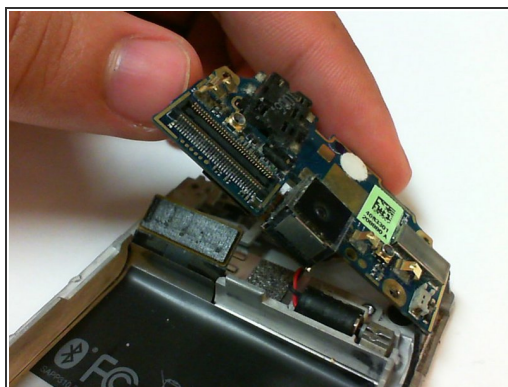
- Locate the two wired connections on the top circuit board.

Step 12



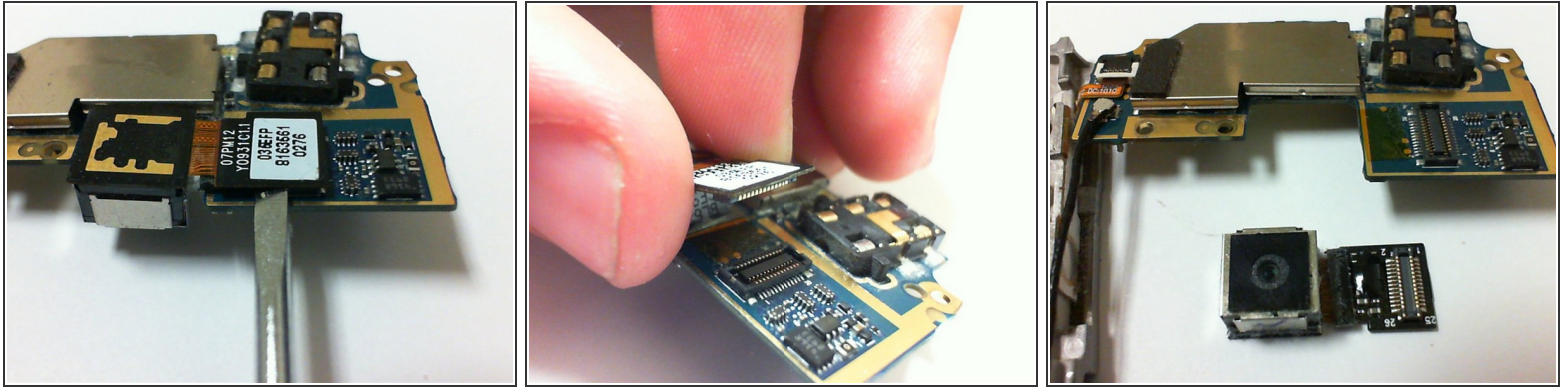
- Remove the wired connections by using a squeeze-and-pull action.

Step 13



- Slowly lift the circuit board from the left.
- Continue to flip the circuit board all the way over to the right.

Step 14



- The other side of the camera and circuit board should be exposed.
- Disconnect the ribbon cable with a precision screwdriver.
- Remove the faulty camera and replace with a new one.

To reassemble your device, follow these instructions in reverse order.