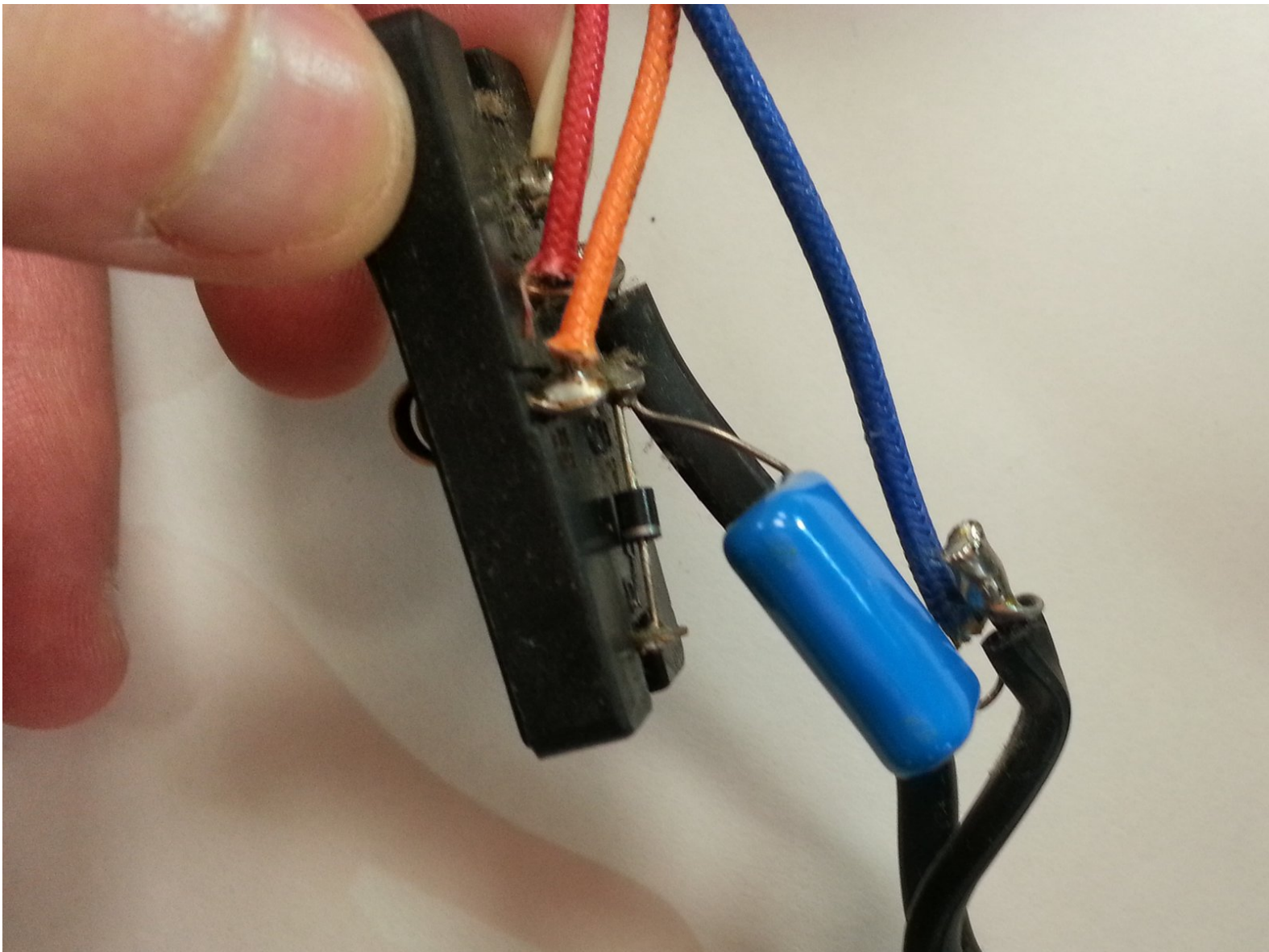




# Hair Dryer Button Switchboard Replacement

This guide explains how to identify, remove, and install the button switchboard in a generic hair dryer.

Written By: Mitch





## TOOLS:

- [Phillips #1 Screwdriver](#) (1)
- [Soldering Workstation](#) (1)

## Step 1 — Nozzle



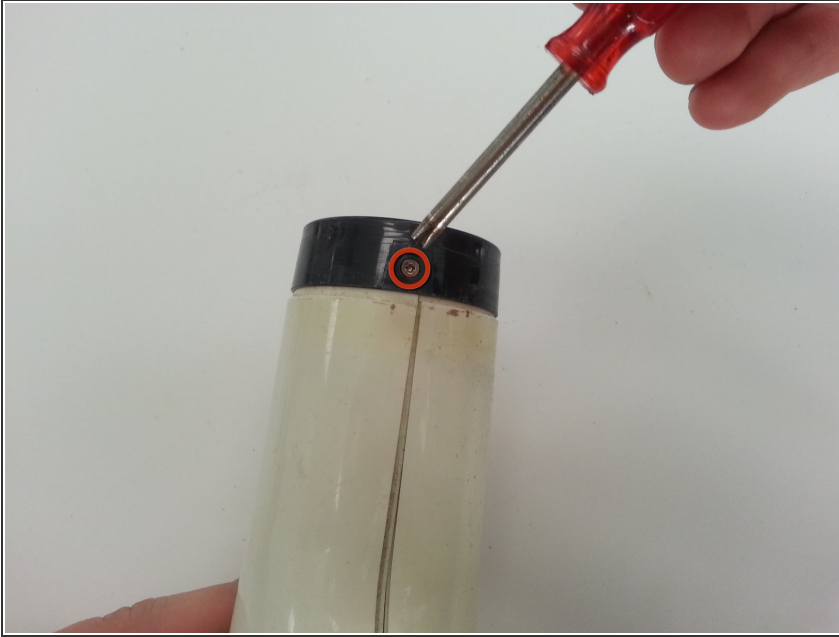
- Identify the black air concentrating nozzle.

## Step 2



- Remove the black air concentrating nozzle by gently twisting and pulling the nozzle.

### Step 3 — Grating



- Using a screwdriver, remove the screw located underneath the air concentrating nozzle. This screw attaches the hair dryer body to the hair dryer grating.
- ⓘ The purpose of this guide is to demonstrate the repair steps for a generic hair dryer. We do not specify screw sizes because screw sizes can differ between hair dryers. For most hair dryers, use a Phillips #1 Screwdriver. For hair dryers with smaller screws, consider using a Phillips #00 Screwdriver.

### Step 4



- Detach the hair dryer grating from the body by gently twisting the grating from side to side.



## Step 5



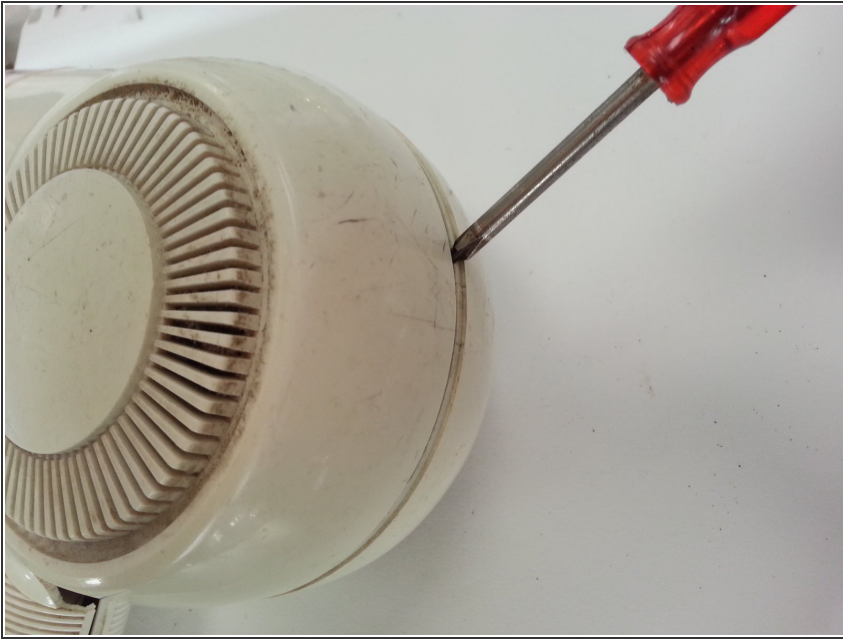
- Separate the hair dryer grating into the three pieces seen in the image.

## Step 6 — Button Switchboard



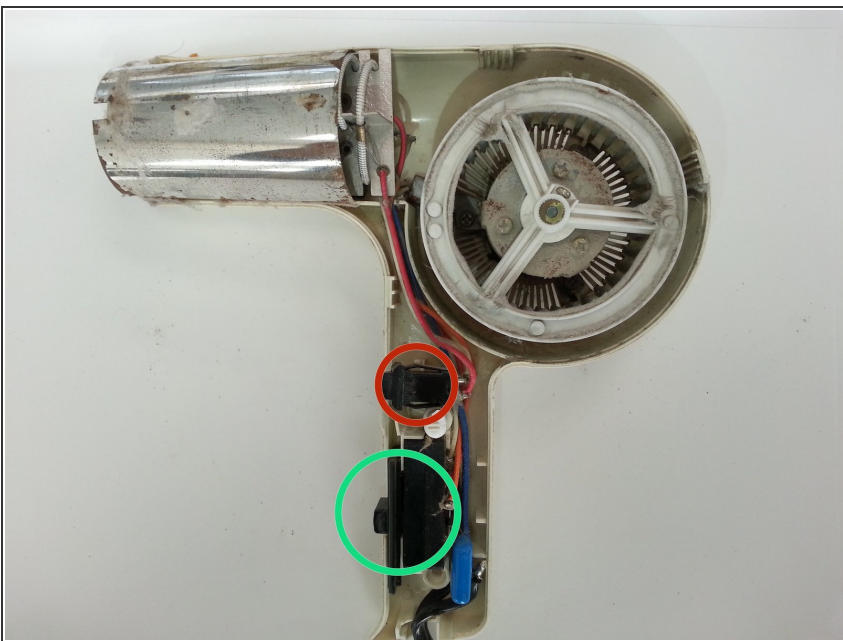
- Using a Phillips #1 Screwdriver, remove the screws located on the hair dryer handle.

## Step 7



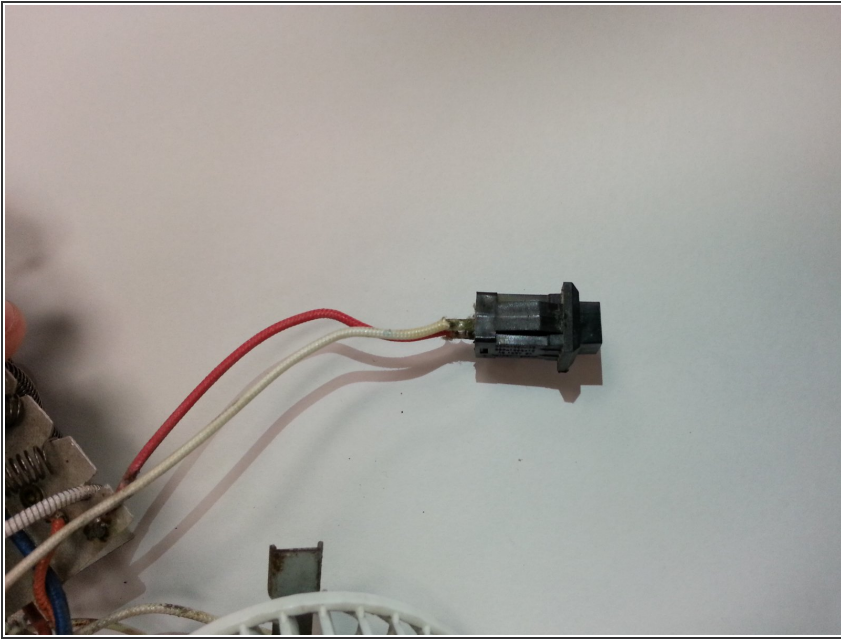
- Using a plastic opening tool, carefully remove the front face of the hair dryer plastic case.

## Step 8



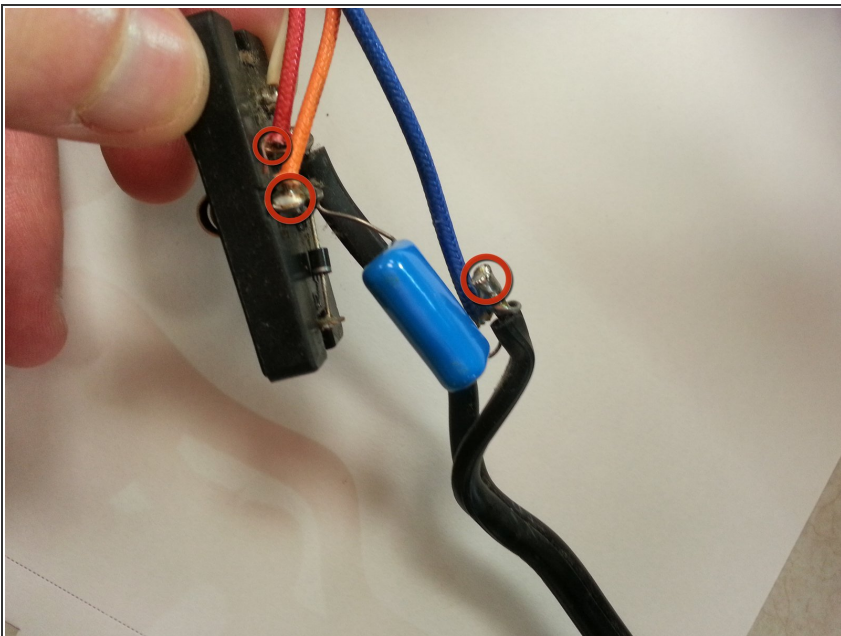
- The hair dryer is now disassembled. The fan, motor, heating element cover, and internal wiring are exposed.
  - Identify the turbo button.
  - Identify the button switchboard.

## Step 9



- Gently pull the turbo button away from the hair dryer body.
- ⓘ If the turbo setting is still not working after you replace the switchboard, consider using soldering techniques to replace the turbo button .

## Step 10



- Gently pull the button switchboard away from the hair dryer body.
- Using a desoldering wick and a soldering iron, desolder the wires.
- Refer to the following page for desoldering instructions:  
[Soldering Skills](#)

To reassemble your device, follow these instructions in reverse order.