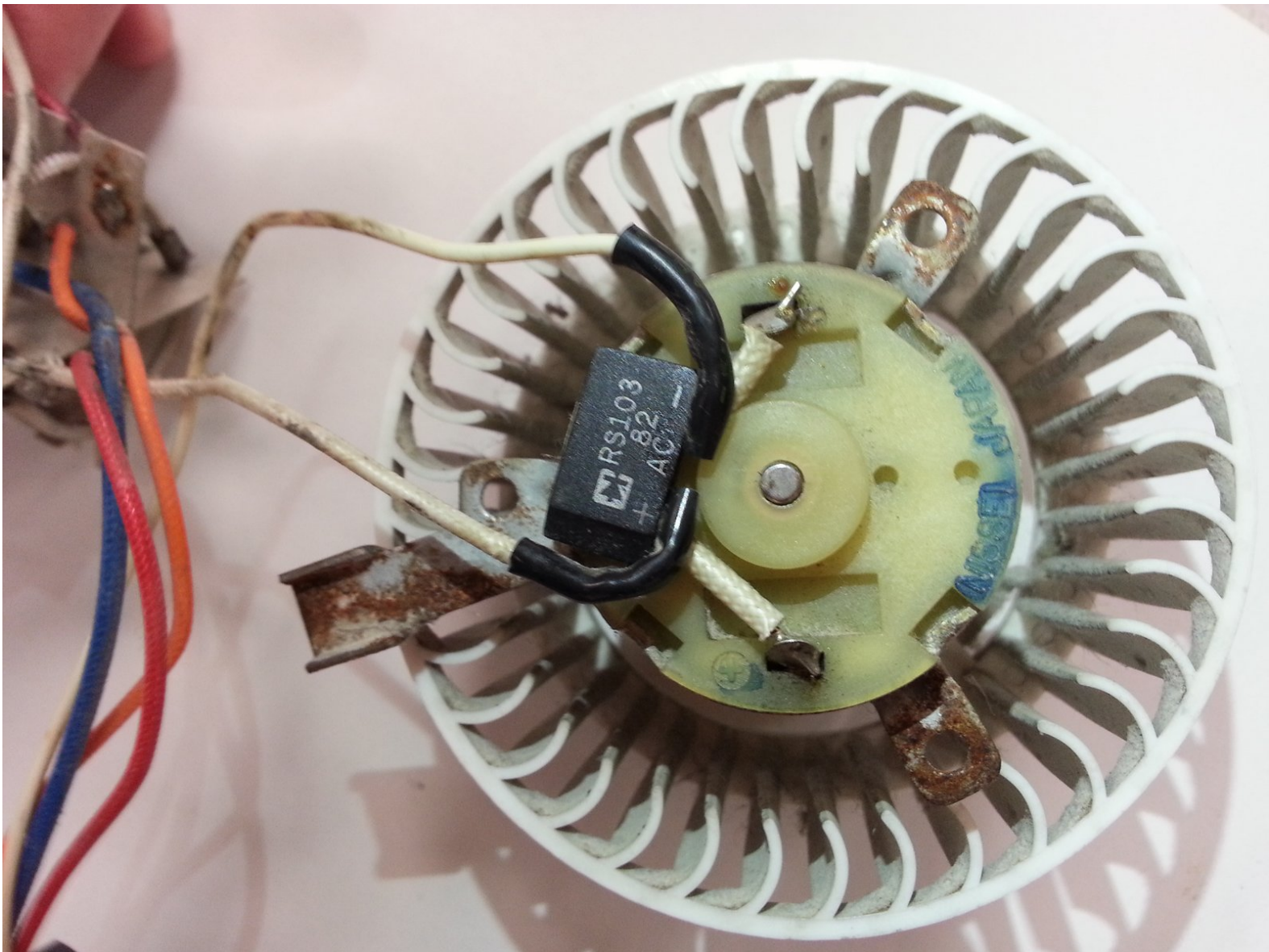




Hair Dryer Fan/ Motor Assembly Replacement

This guide helps remove and re-install the fan and motor of a hair dryer.

Written By: Mitch



INTRODUCTION

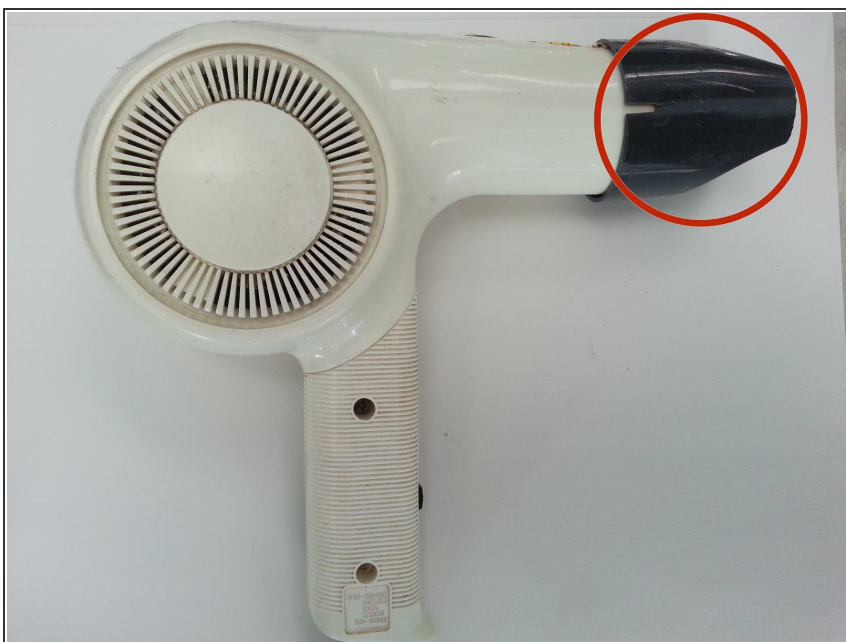
Instead of buying a new hairdryer, simply use this guide to replace the motor on your old one!



TOOLS:

- [Phillips #1 Screwdriver](#) (1)
 - [Soldering Workstation](#) (1)
 - [iFixit Opening Tools](#) (1)
-

Step 1 — Nozzle



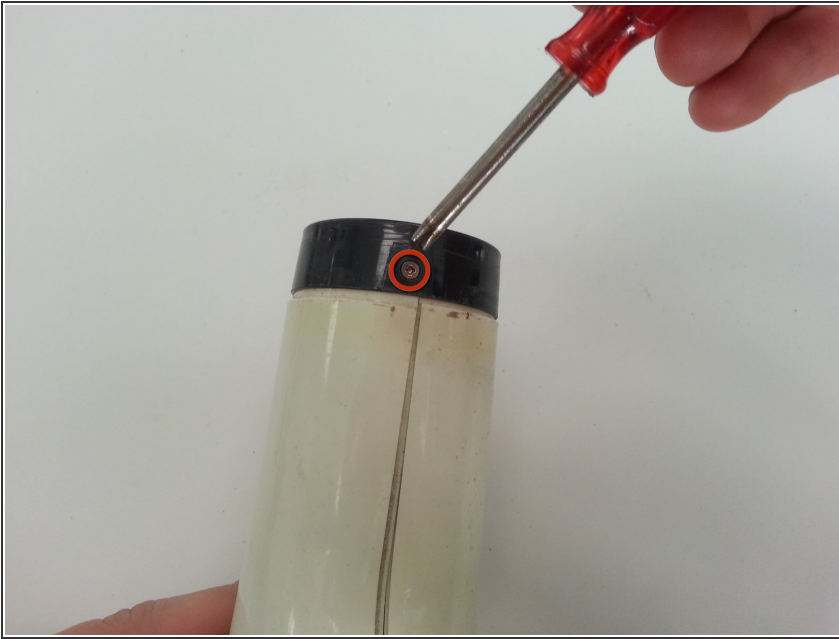
- Identify the black air concentrating nozzle.

Step 2



- Remove the black air concentrating nozzle by gently twisting and pulling the nozzle.

Step 3 — Grating



- Using a screwdriver, remove the screw located underneath the air concentrating nozzle. This screw attaches the hair dryer body to the hair dryer grating.
- ⓘ The purpose of this guide is to demonstrate the repair steps for a generic hair dryer. We do not specify screw sizes because screw sizes can differ between hair dryers. For most hair dryers, use a Phillips #1 Screwdriver. For hair dryers with smaller screws, consider using a Phillips #00 Screwdriver.

Step 4



- Detach the hair dryer grating from the body by gently twisting the grating from side to side.

Step 5



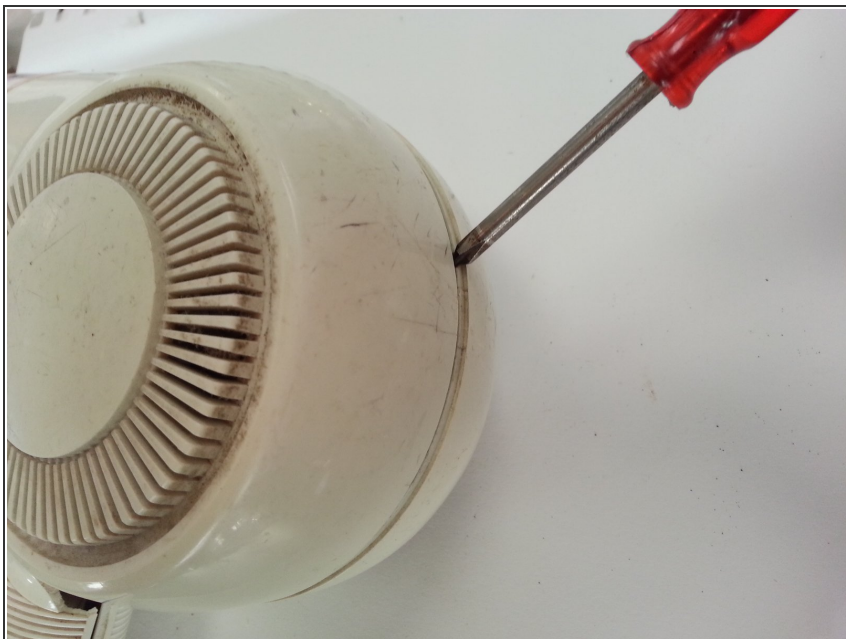
- Separate the hair dryer grating into the three pieces seen in the image.

Step 6 — Fan/ Motor Assembly



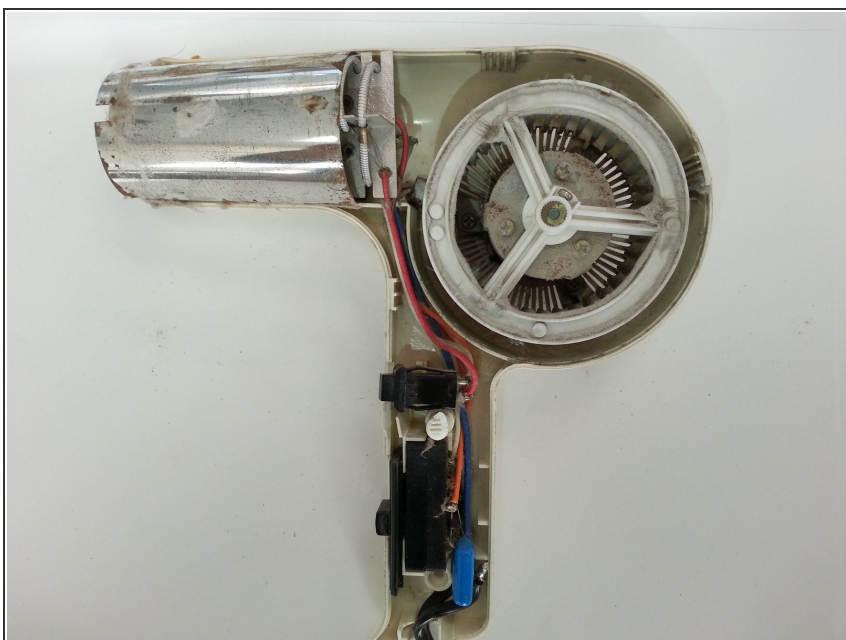
- Locate the screws on the handle and remove with a Phillips screwdriver.

Step 7



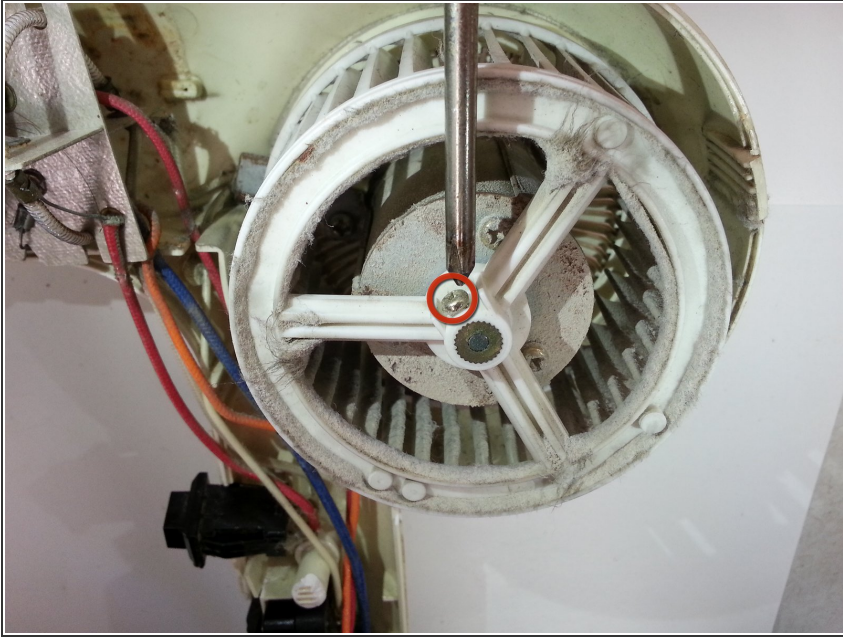
- Carefully separate the plastic case with the Plastic Opening Tool.

Step 8



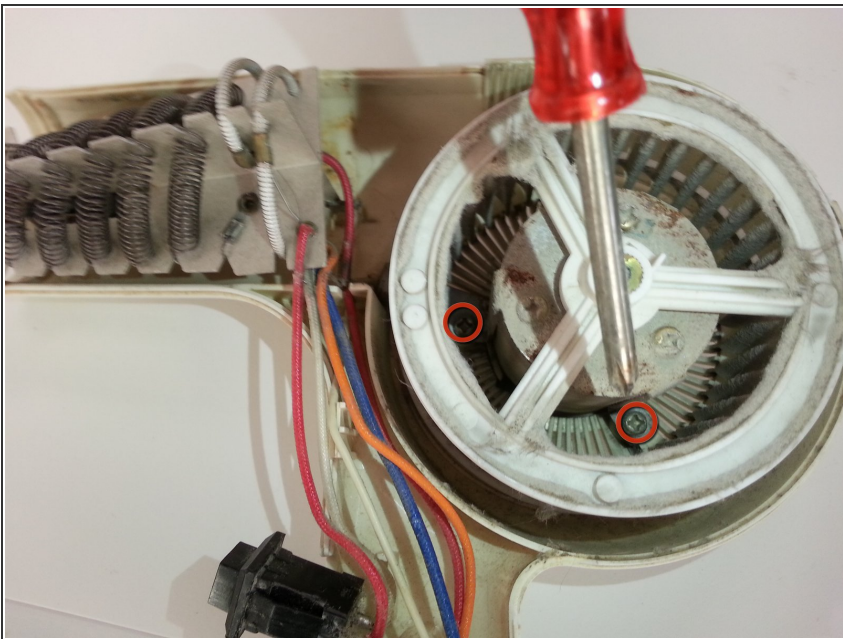
- After removing the plastic case, locate the fan towards the back of the hair dryer.

Step 9



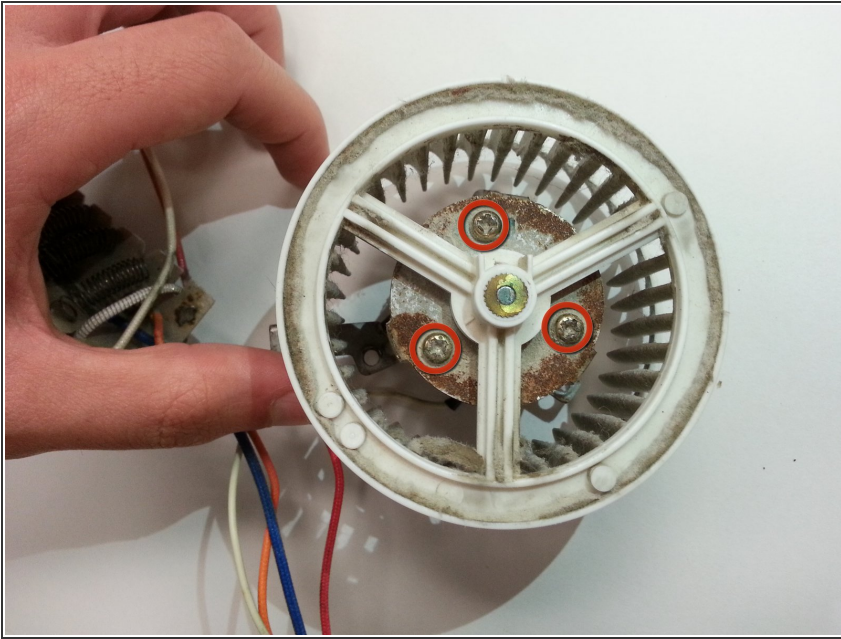
- Remove the screw that is holding the fan to the motor using a Phillips screwdriver.

Step 10



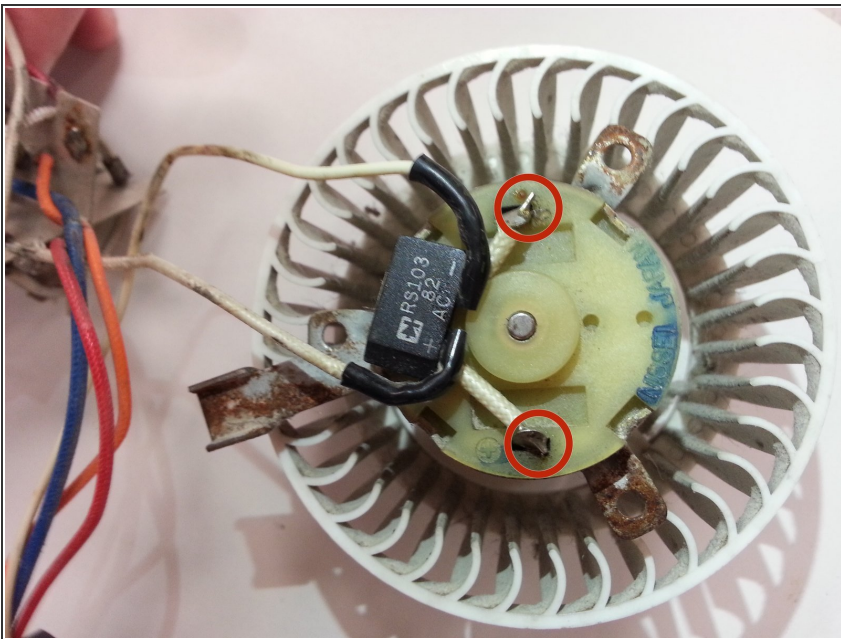
- Remove the screws holding the motor to the casing using a Phillips screwdriver.
- ⓘ NOTE: This may be unnecessary if the fan can be removed without using a screwdriver.

Step 11



- Isolate the fan from the rest of the dryer.
- Remove the screws holding the motor in place. Replace with the new component.

Step 12



- Solder the wires to the motor. Refer to the soldering page below, which will help you replace this component.

⚠ [Soldering Skills](#)

To reassemble your device, follow these instructions in reverse order.