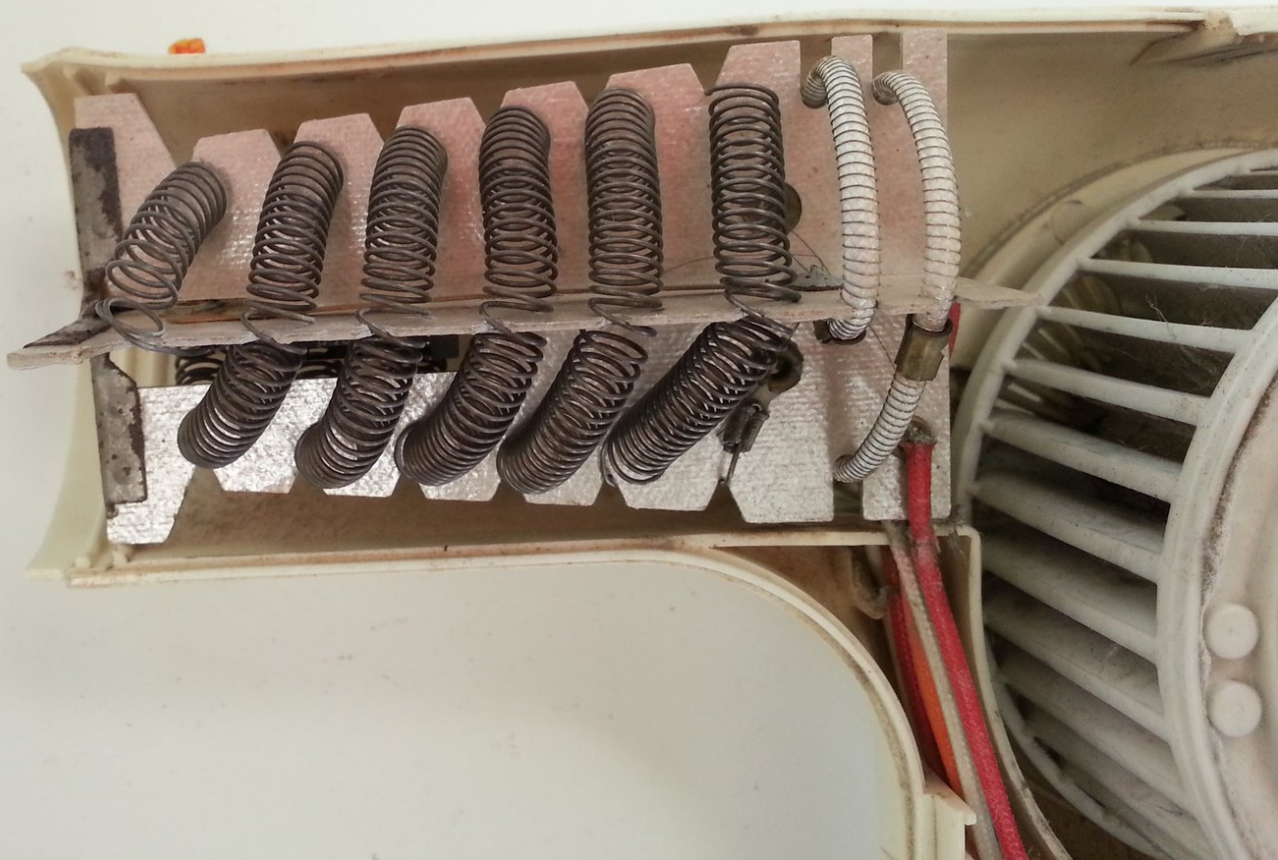




Hair Dryer Heating Element Replacement

Install a replacement heating element.

Written By: Mitch



INTRODUCTION

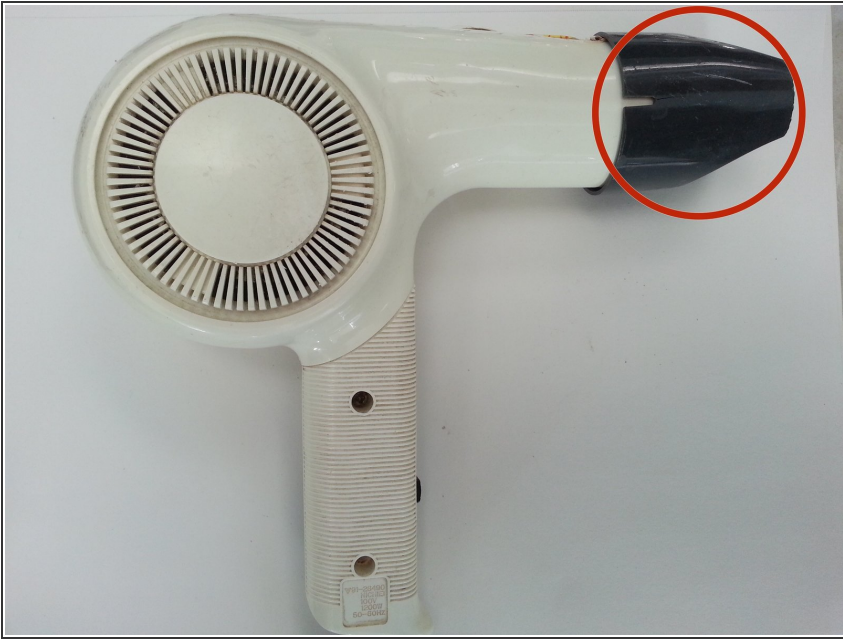
Use this guide to install a replacement heating element if your hairdryer just isn't drying your hair the way it used to.



TOOLS:

- [Phillips #1 Screwdriver](#) (1)
 - [Soldering Workstation](#) (1)
-

Step 1 — Nozzle



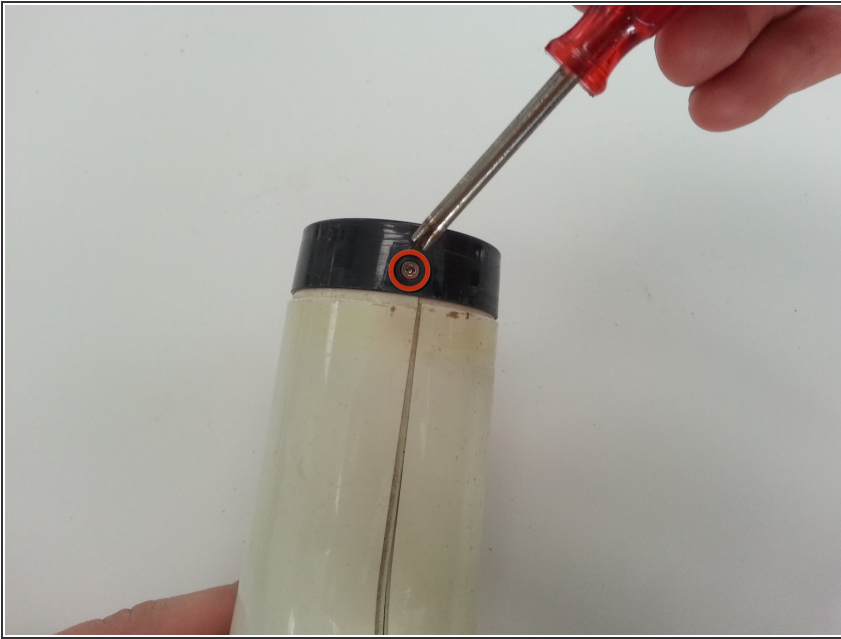
- Identify the black air concentrating nozzle.

Step 2



- Remove the black air concentrating nozzle by gently twisting and pulling the nozzle.

Step 3 — Grating



- Using a screwdriver, remove the screw located underneath the air concentrating nozzle. This screw attaches the hair dryer body to the hair dryer grating.
- ⓘ The purpose of this guide is to demonstrate the repair steps for a generic hair dryer. We do not specify screw sizes because screw sizes can differ between hair dryers. For most hair dryers, use a Phillips #1 Screwdriver. For hair dryers with smaller screws, consider using a Phillips #00 Screwdriver.

Step 4



- Detach the hair dryer grating from the body by gently twisting the grating from side to side.

Step 5



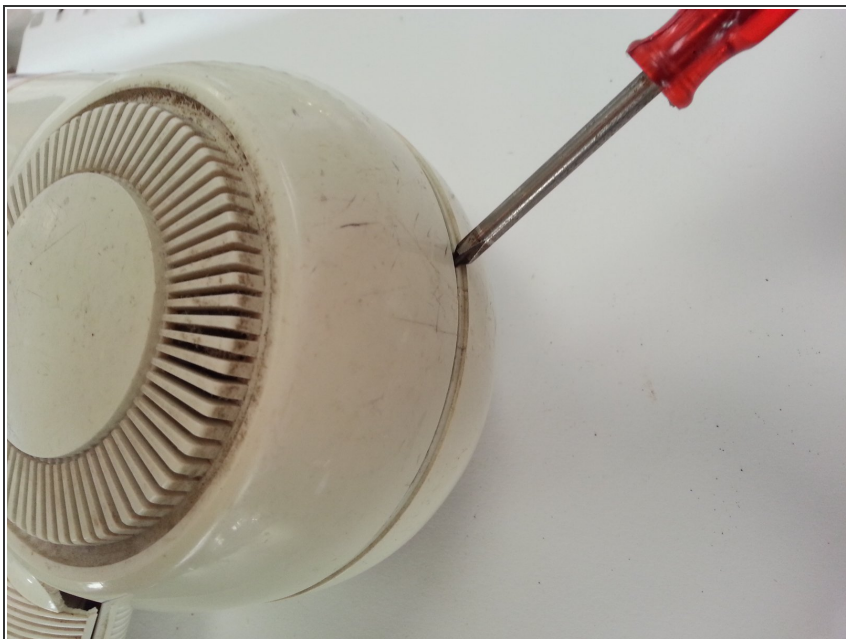
- Separate the hair dryer grating into the three pieces seen in the image.

Step 6 — Heating Element



- Locate the screws on the handle and remove them with a Phillips screwdriver

Step 7



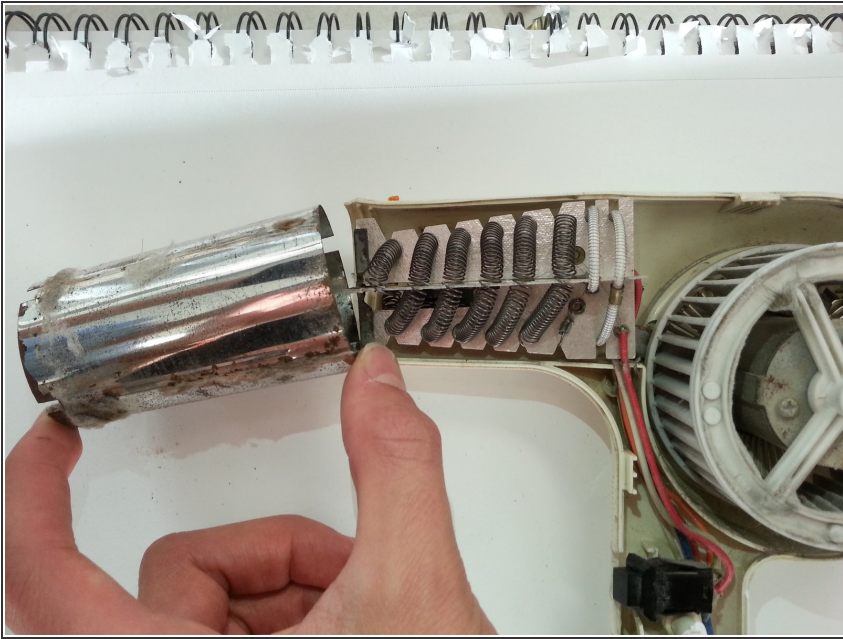
- Carefully separate the plastic case using the Plastic Opening Tools

Step 8



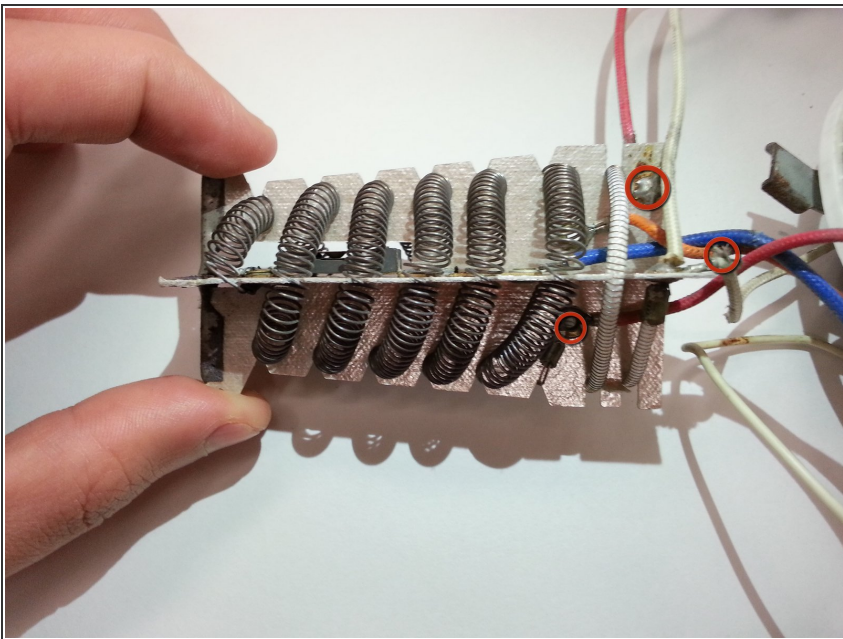
- Your hairdryer should now be disassembled. You should easily be able to see the fan, motor, heating element cover, and internal wiring.

Step 9



- Remove the heat-element housing by sliding it off of the dryer.

Step 10



- Isolate the heating element. Use a desoldering wick and soldering iron to desolder the wires. Refer to the soldering page below.
- [Soldering Skills](#)

To reassemble your device, follow these instructions in reverse order.