



Hama uRage Mobile Gaming Mouse Right click microswitch Replacement

Hama urage double click problem

Written By: P S



INTRODUCTION

Open, desolder micro switch and insert and solder a new one.



TOOLS:

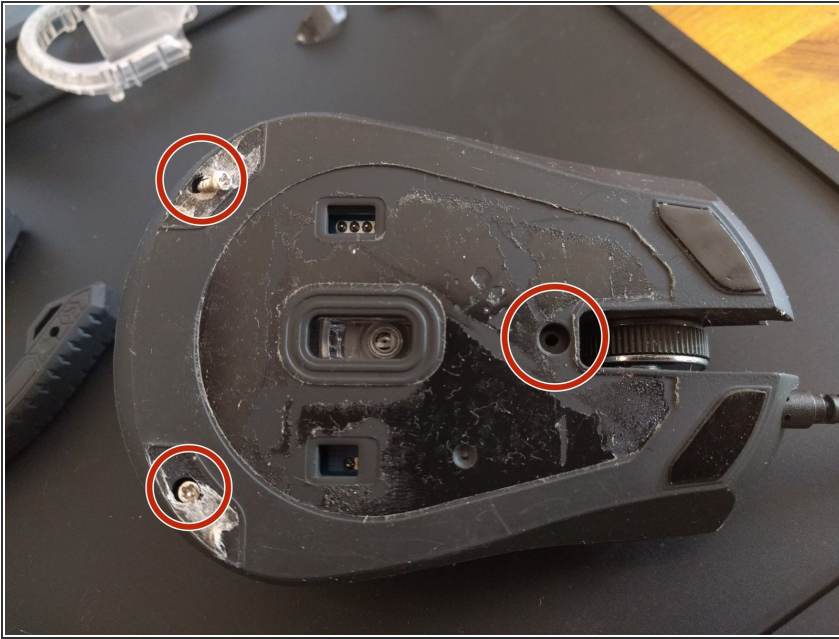
- [Solder](#) (1)
- [Soldering Iron](#) (1)
- [Super Glue](#) (1)
- [IPA](#) (1)
- [Desoldering Braid](#) (1)



PARTS:

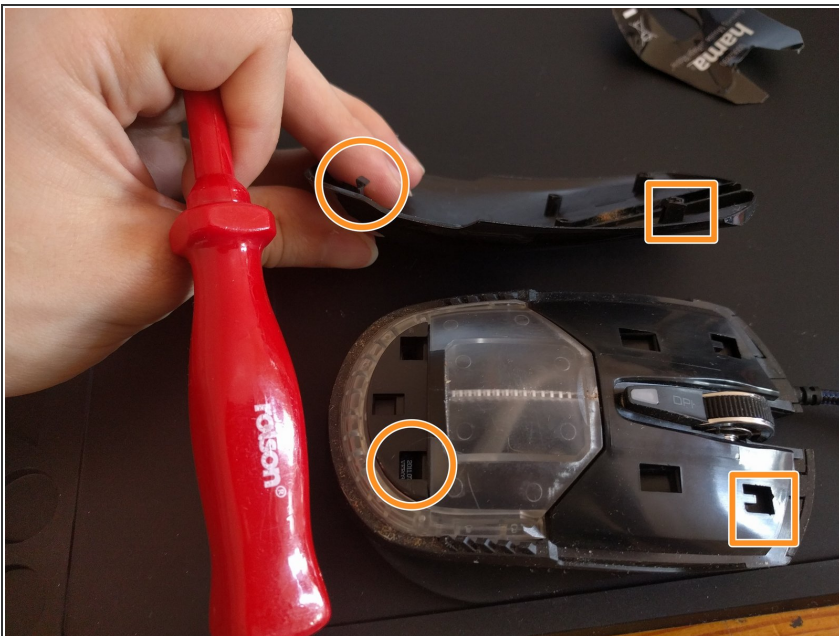
- [3 pin microswitch](#) (1)

Step 1 — How to open the case



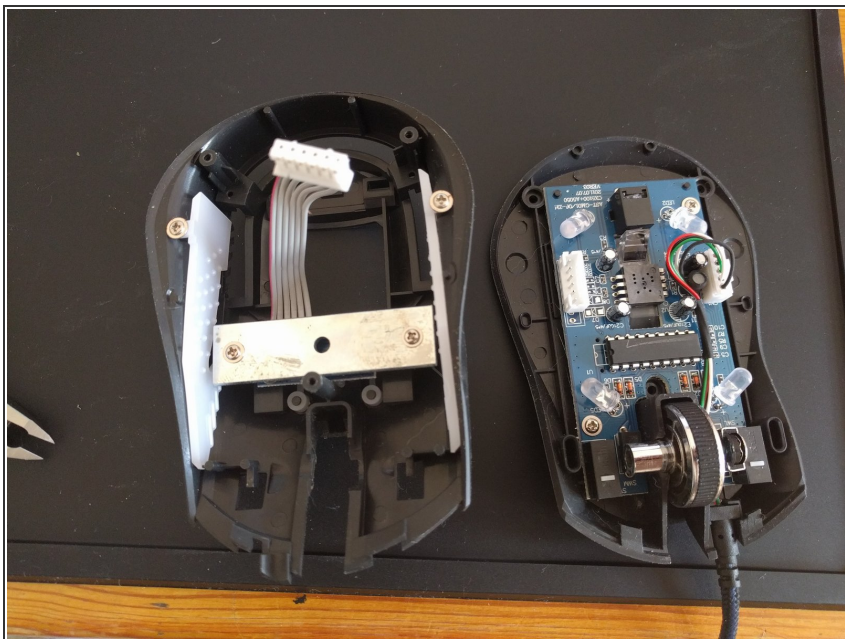
- Take the sticker off and locate middle screw, two other screws are under the teflon pads
- undo the screws

Step 2



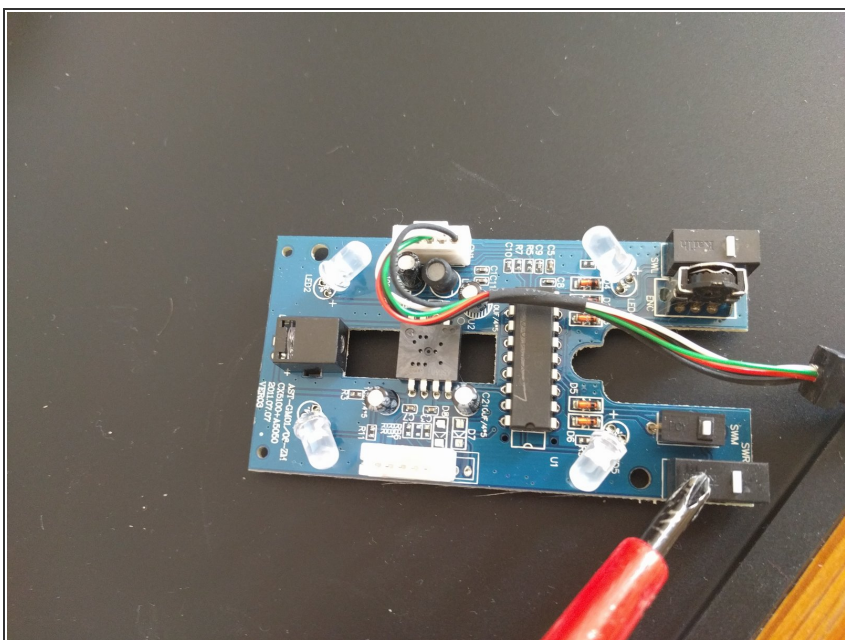
- Take the top cover off, please be careful now to break the plastic hinges
- If you break them you can use any superglue and a lot of patience to put them together since the case is made of ABS so it is easy to glue with any solvents

Step 3



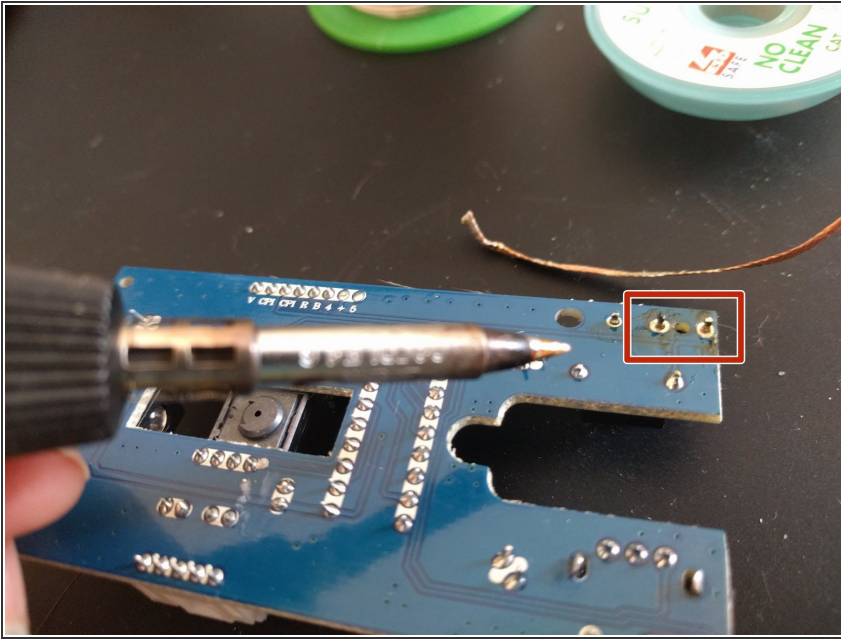
- Disconnect the top cover switch ribbon
- Remove two screws holding the PCB
- Carefully remove the spinning wheel

Step 4



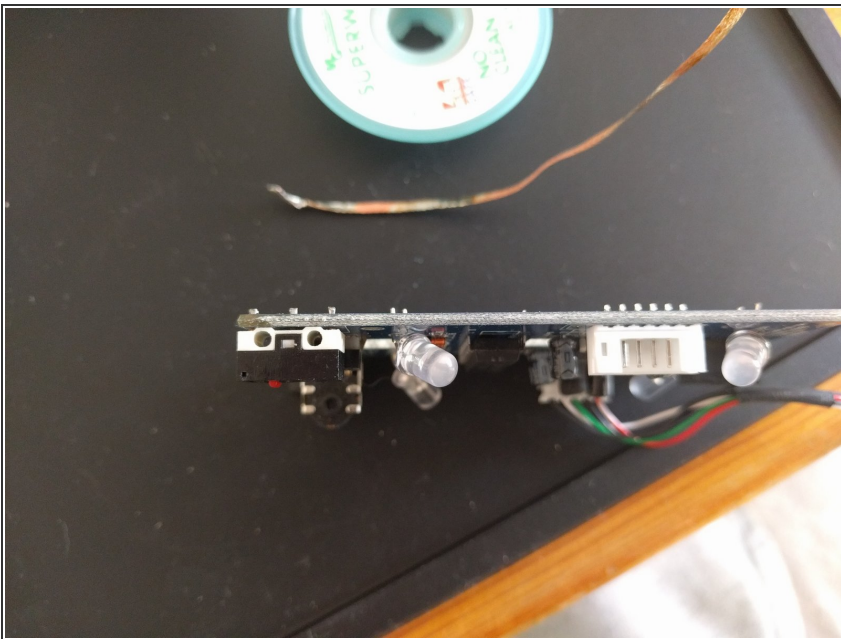
- Locate the right switch (right double click problem)

Step 5



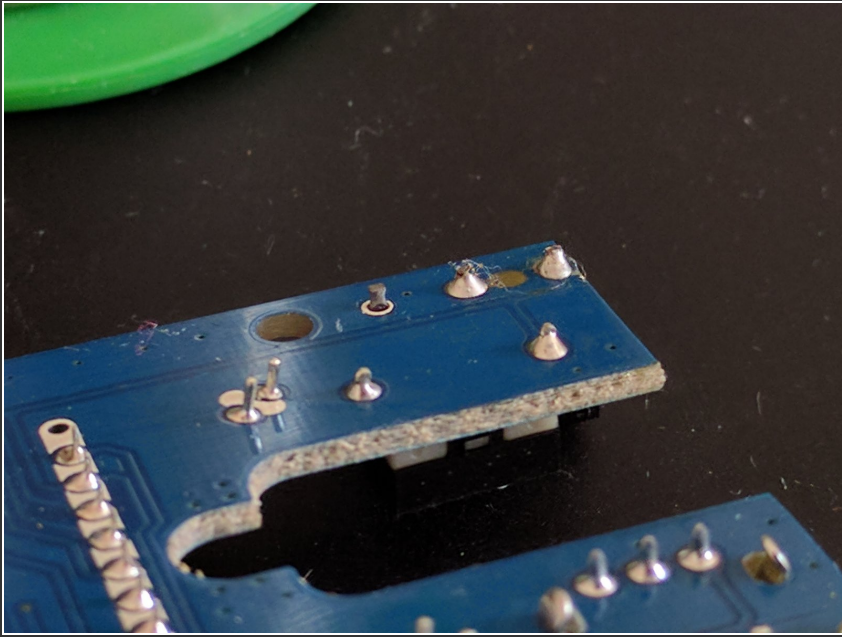
- Desolder the old switch using solder wick or braided wire covered in flux, use a little amount of solder to make the process easier and quicker, move the wick slowly in one direction to dispose the solder joint onto it

Step 6



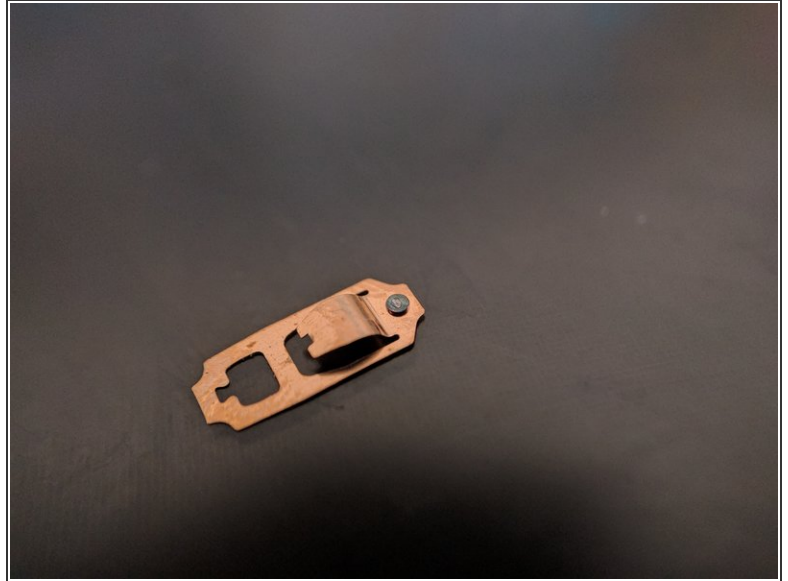
- Insert another - operational 3 pin micro switch (I got mine from some other recycled mice)

Step 7



- Solder only two first pins like this, and clean the excess flux with any sort of alcohol or solvent so it will not corrode the joint in the future.

Step 8



- Put the mouse together and test it first before replacing the label and teflon sliders
- Additionally if you want to make the job look professional you can replace the double sided tape and teflon sliders with a new ones, but cleaning old one off and using some superglue may do the trick
- Using the opportunity of opening the case ie you can also give it a clean, the best cleaning solution might be IPA
- The possible cause of this double click problem is probably used up connector inside of the microswitch or bend copper plate if someone used too much force on it, it might be possible to fix it by bending and cleaning it but there would be a risk that it will happen again shortly, it is better to replace it - it is also quicker

To reassemble your device, follow these instructions in reverse order.