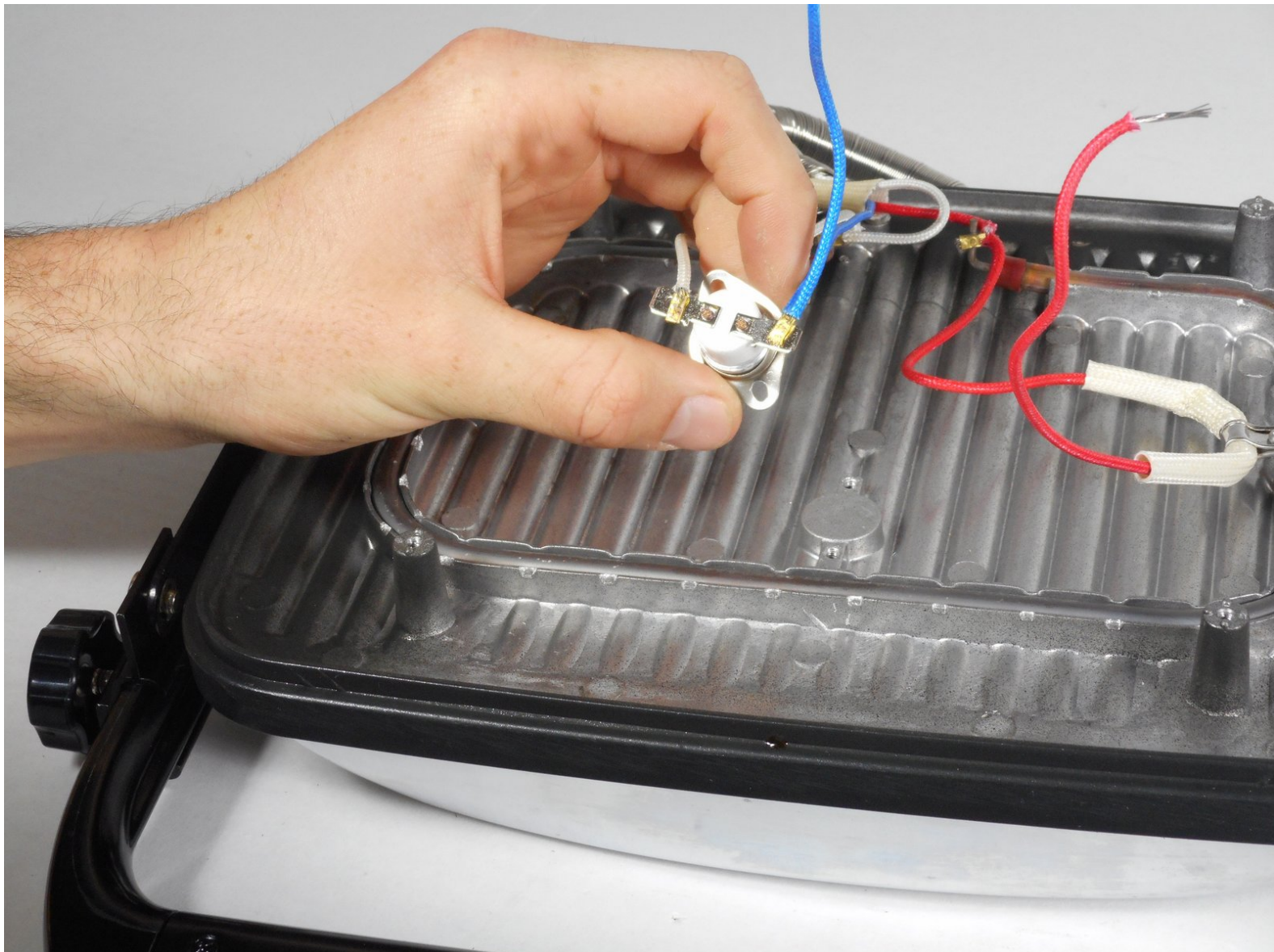




Hamilton Beach 25460Z Thermal Switch Replacement

This guide will replace a faulty thermal switch and allow the press to return to normal operation.

Written By: Forrest Rodeman



INTRODUCTION

This replacement requires you to be confident with simple wiring as well as basic soldering skills. If you are unfamiliar with soldering and de-soldering, make sure to check out iFixit's [Soldering Skills page](#) before attempting this replacement!




TOOLS:

- [Phillips #2 Screwdriver](#) (1)
 - [Small Needle Nose Pliers](#) (1)
 - [T10 Torx Screwdriver](#) (1)
 - [Soldering Iron](#) (1)
 - [Solder](#) (1)
-

Step 1 — Plug Wiring



 Unplug your device before proceeding with disassembly.

- Remove the four 14mm screws from the bottom of the Panini Press using the T10 Screwdriver.

Step 2



- Lift up the plastic cover to expose the plug wiring.
- ★ Mark the plug wire connected to the red wire with a piece of tape. This will be used as a reference for reassembly.

Step 3



- Use the pliers to pinch the widest point of the cap. This should be done opposite of the already existing crimps.
- Slide off the white cap.
- Repeat these steps for the second white cap.

Step 4



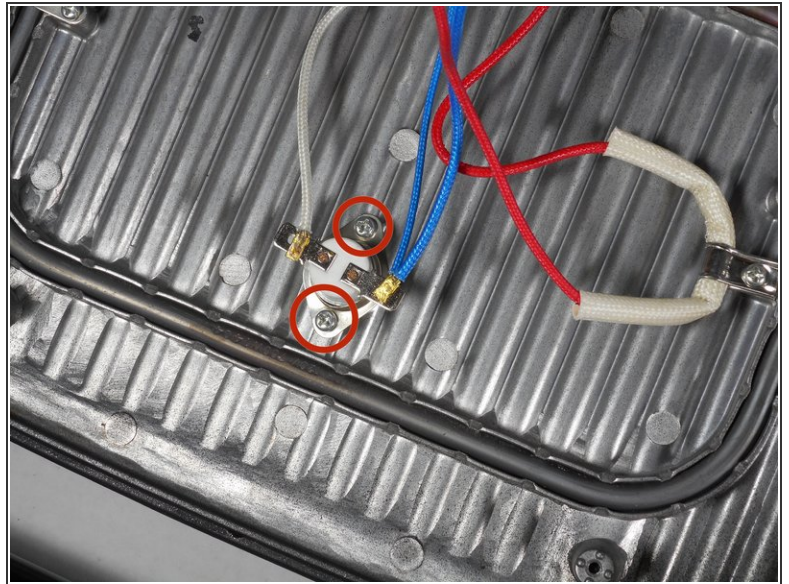
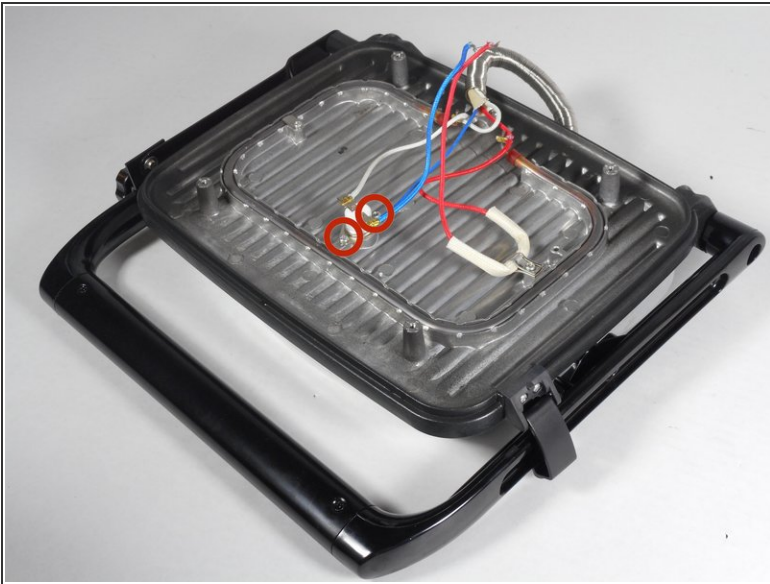
- Remove the two rubber screw covers from the bottom of the Panini Press.
- Remove the four uncovered 10mm screws with the PH2 Screwdriver.

Step 5




- Lift the plastic lower heating element up and place to the side for reassembly. You have now disconnected the plug wiring completely.

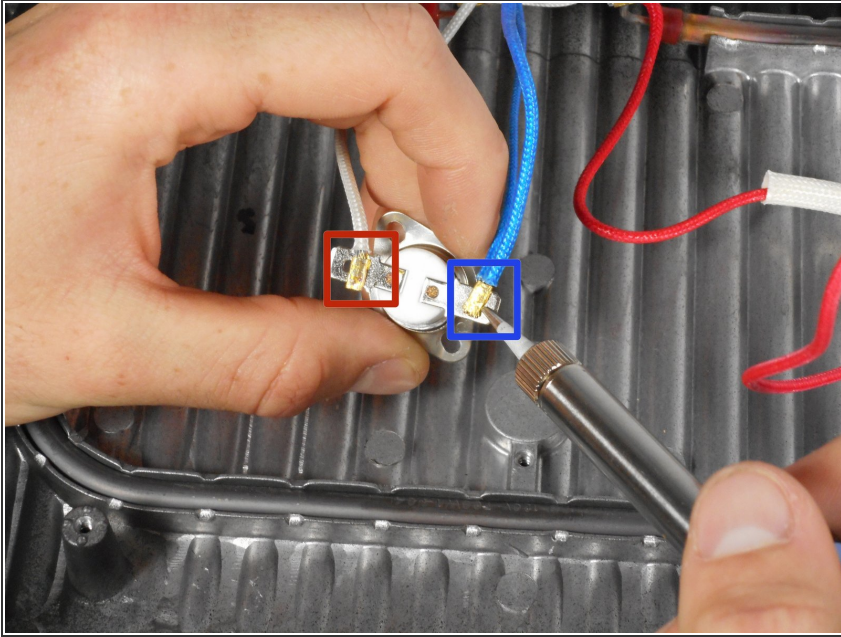
Step 6 — Thermal Switch



- Remove the two 10mm screws connecting the thermal switch with the PH2 Screwdriver and a bit of force.

 These screws may be difficult to remove.

Step 7



- De-solder the connection between the wires and the thermal switch.
- ⓘ Refer to this [page](#) if you need to brush up on your soldering skills.
- Replace the thermal switch.
- The lead on the red (with the small hole), marked in red, connects to the white wire.
- The lead on the right, marked in blue, connects to the blue wire.

To reassemble your device, follow these instructions in reverse order.