



Hamilton Beach 49980A Large Heating Component Replacement

Replace the the large heating component to make your coffee hot again.

Written By: Brandon Haghighi



INTRODUCTION

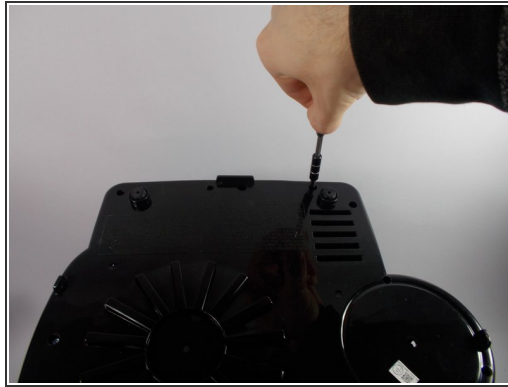
When following this repair guide, be sure to have an anti-static wrist wrap, and a screw driver with a 4-way bit and 3-way bit. This guide also requires soldering and the possible reapplication of thermal paste.



TOOLS:

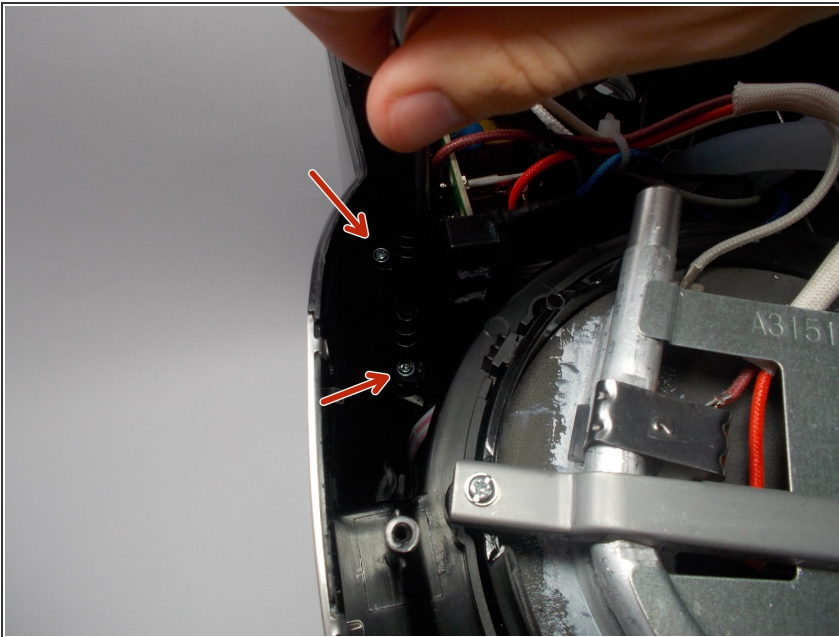
- [Tri-point Y0 Screwdriver](#) (1)
 - [Phillips #1 Screwdriver](#) (1)
 - [Soldering Iron](#) (1)
 - [Large Needle Nose Pliers](#) (1)
-

Step 1 — Bottom Plate



- Begin by inverting the coffee maker and resting it on a flat surface to make working on the bottom easier.
- Now use a Y0 bit to remove all of the .46 inch long screws from the bottom.
- Lift the plate to remove it from the rest of the machine.

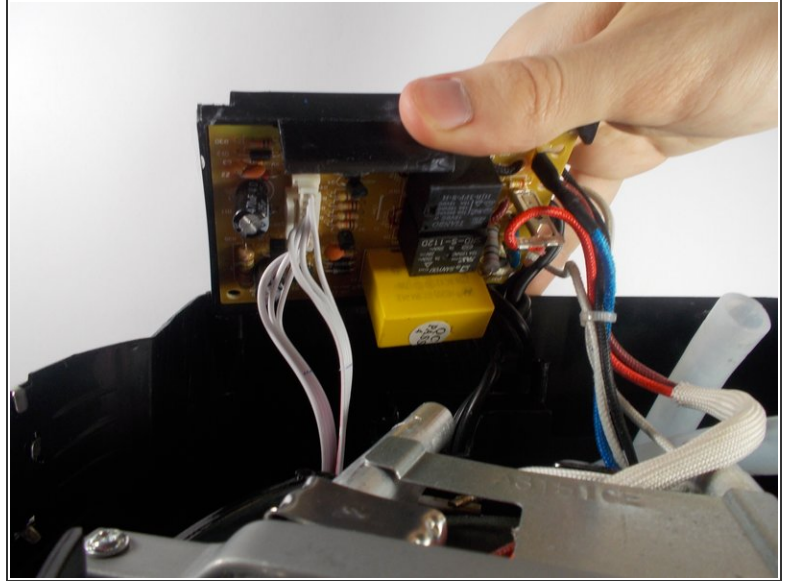
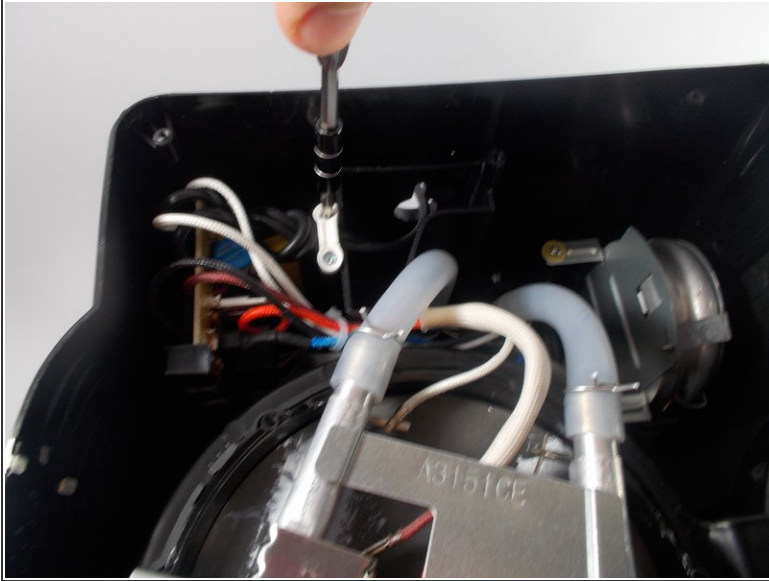
Step 2 — Motherboard



- Once the bottom plate is removed, use a PH1 bit to remove the .525 inch long screws holding the

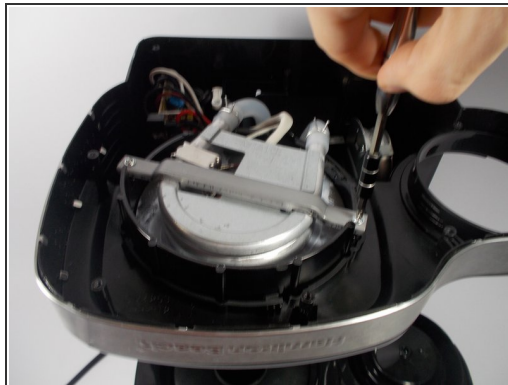
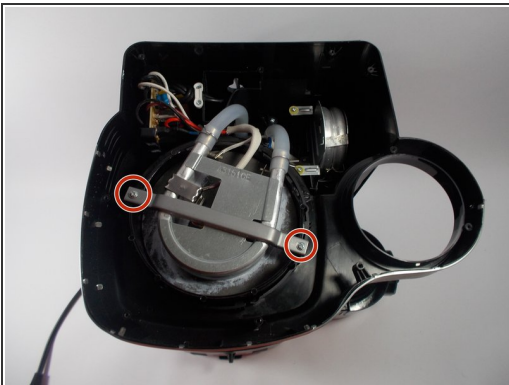
motherboard bracket in the main housing.

Step 3



- Using a PH1 bit, remove the two .425 inch long screws holding down the white power cord bracket. This will give you the slack in the wire that you need to work on the motherboard.
- Carefully remove the large white connector that has multiple wires attached to it. This is the wire connected to the button functions on the interface of the coffee maker.

Step 4 — Large Heating Component



- Remove the two .374 inch long Philips head screws from the brace using a PH1 bit and take the brace off.

Step 5



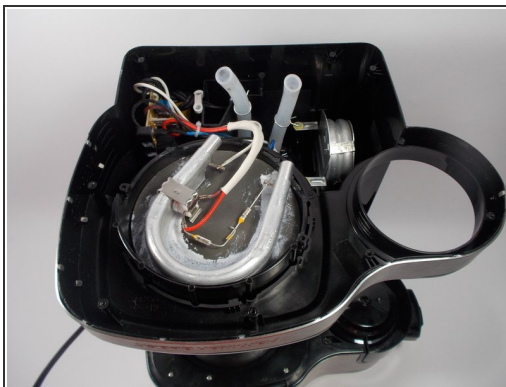
- Remove the second brace.

Step 6



- To remove the tubes from the large heating component, squeeze the spring clamps and slide them further down the tube.
- ⓘ Using pliers makes moving the spring clamps much easier, but it can be done by hand.

Step 7



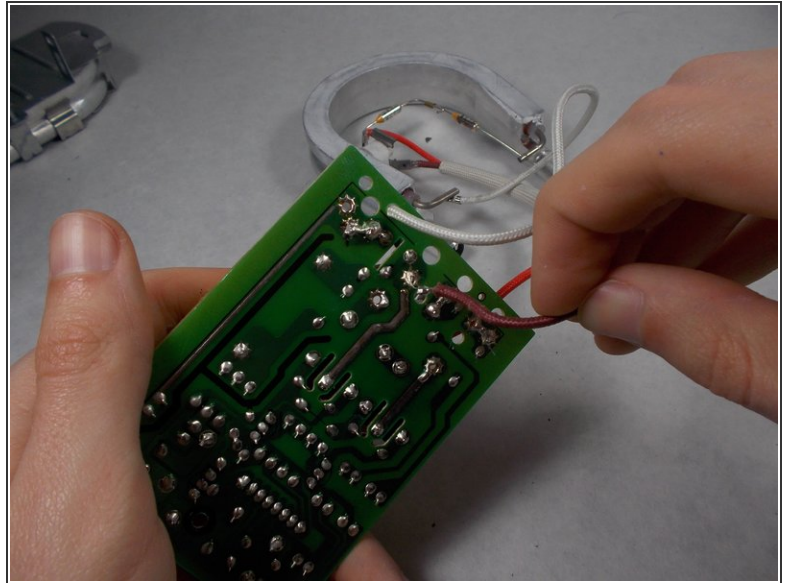
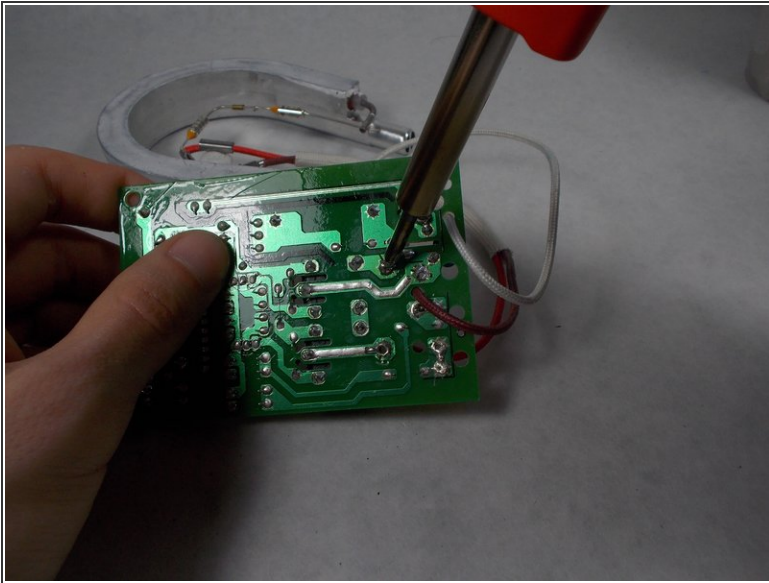
- With the spring clamps moved down, slide the tubes from the ends of the large heating component. Once the ends are free, separate the component from the hot plate.

Step 8



- In order to remove the small housing that covers the motherboard, remove the lone screw with a PH1 bit.

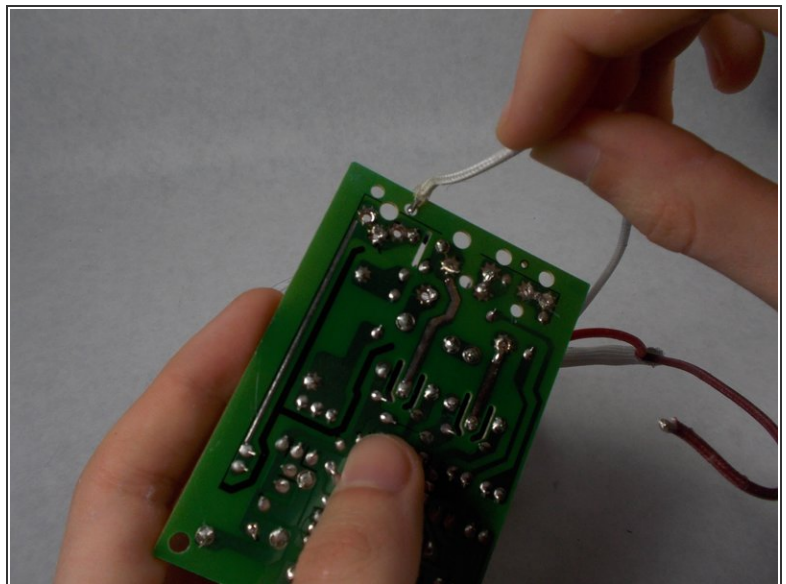
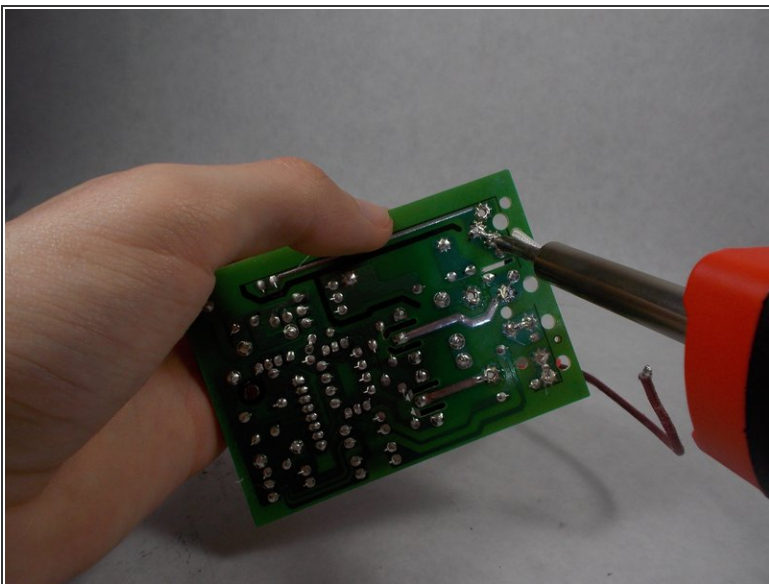
Step 9



- Solder the brown wire connecting the large heating component to the motherboard and remove it.

⚠ The wire and all following wires will be hot, so use pliers to safely handle them.

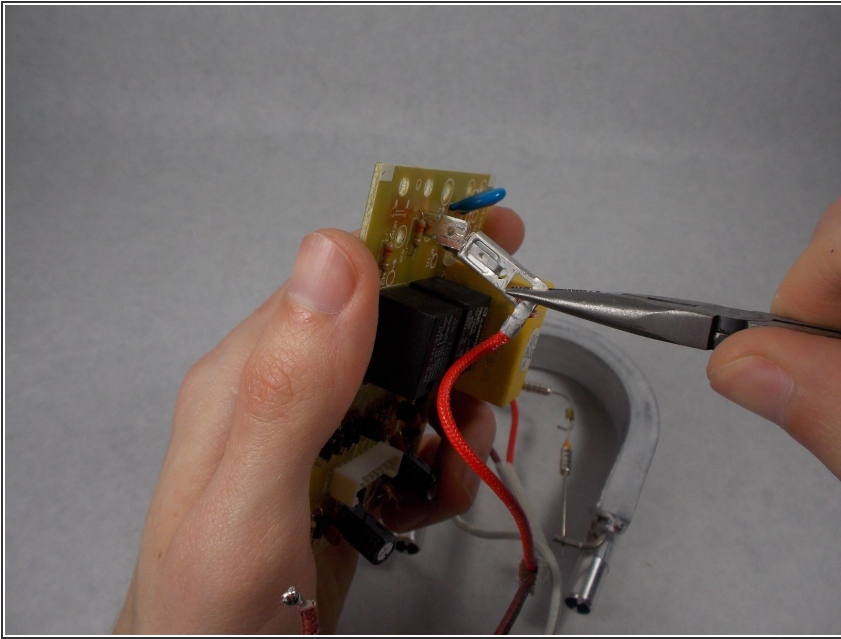
Step 10



- Solder the white wire connecting the large heating component to the motherboard and remove it.

⚠ The wire will be hot, be sure to use pliers

Step 11



- Gently remove the red wire connecting the large heating component to the motherboard using pliers. If this connection is too tight to remove by hand, you may heat the solder on the bottom and remove it completely.
- ⓘ When replacing any soldered components, you may want to apply new solder.

To reassemble your device, follow these instructions in reverse order.