



# Hamilton Beach 49980A Power Cord Replacement

This guide will show you how to replace the powercord on the Hamilton Beach 49980A.

Written By: Paul Shipley

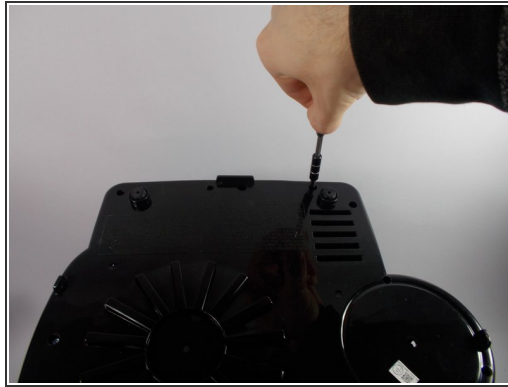




## TOOLS:

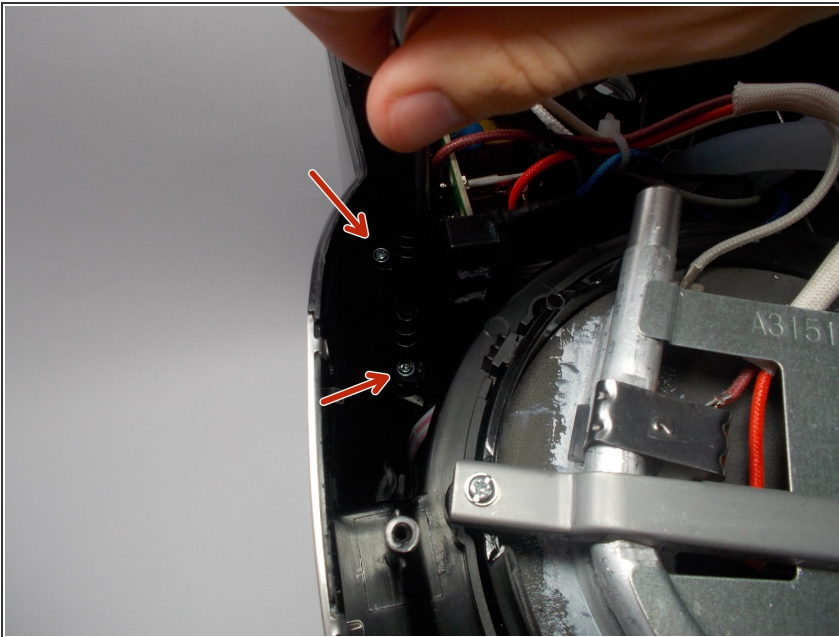
- [Tri-point Y0 Screwdriver](#) (1)
  - [Phillips #1 Screwdriver](#) (1)
  - [Soldering Iron](#) (1)
-

## Step 1 — Bottom Plate



- Begin by inverting the coffee maker and resting it on a flat surface to make working on the bottom easier.
- Now use a Y0 bit to remove all of the .46 inch long screws from the bottom.
- Lift the plate to remove it from the rest of the machine.

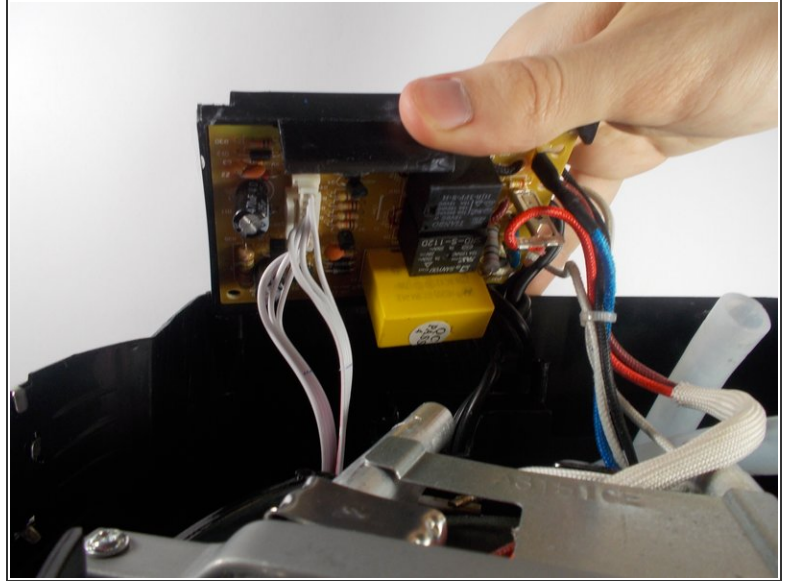
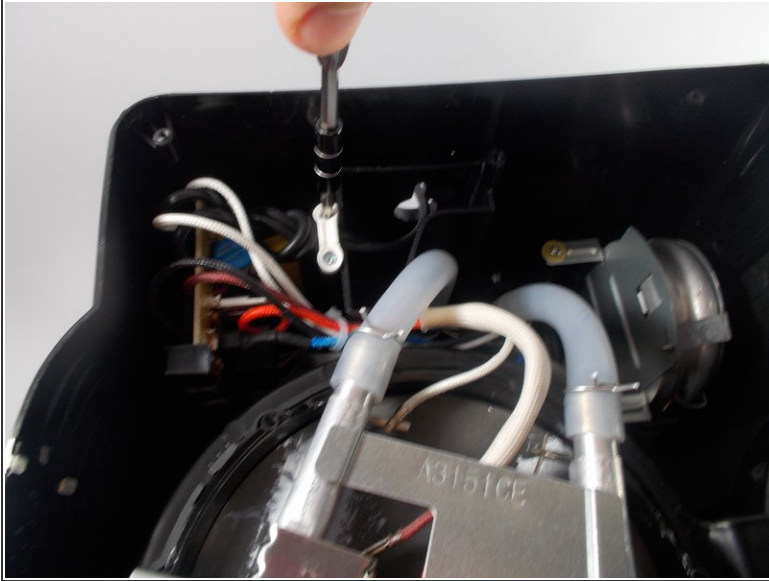
## Step 2 — Motherboard



- Once the bottom plate is removed, use a PH1 bit to remove the .525 inch long screws holding the

motherboard bracket in the main housing.

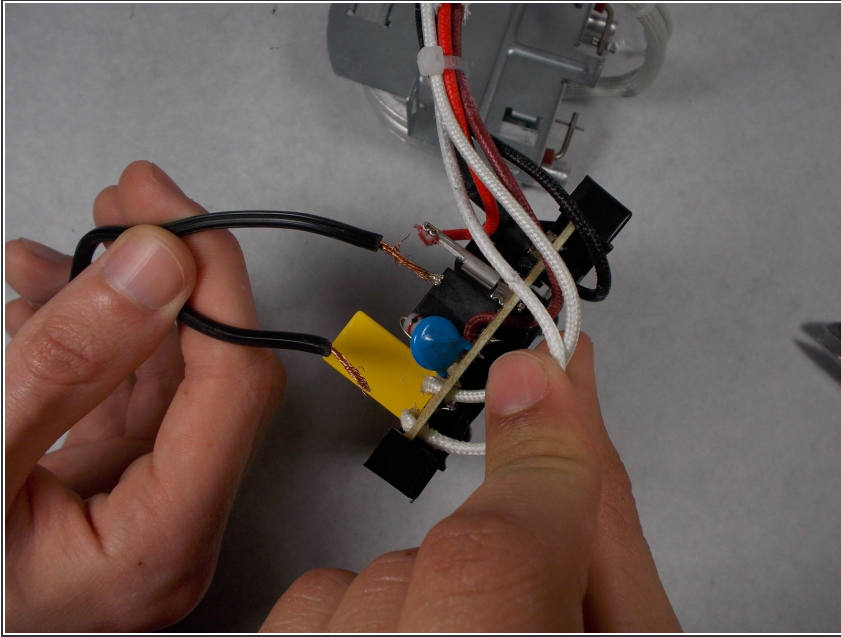
### Step 3



- Using a PH1 bit, remove the two .425 inch long screws holding down the white power cord bracket. This will give you the slack in the wire that you need to work on the motherboard.
- Carefully remove the large white connector that has multiple wires attached to it. This is the wire connected to the button functions on the interface of the coffee maker.

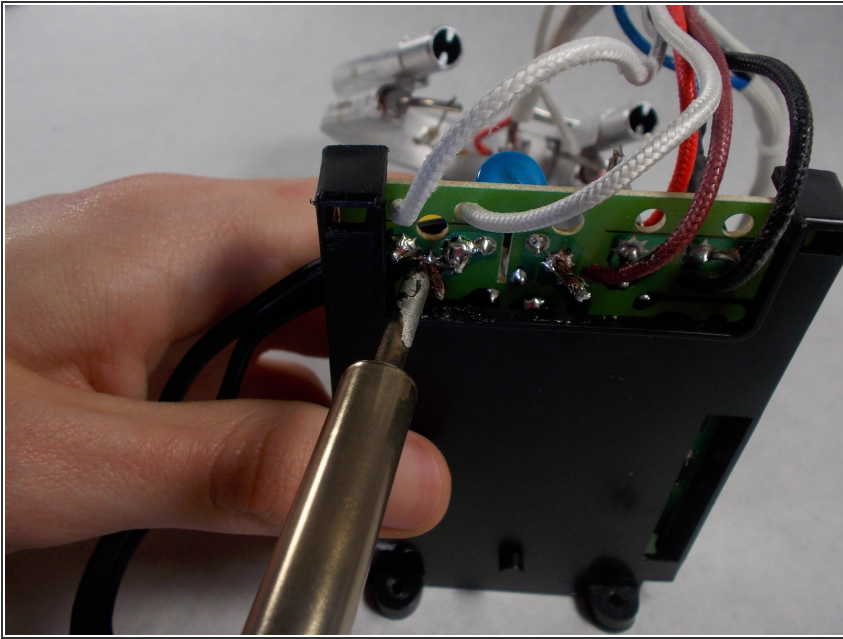


## Step 4 — Power Cord



- After removing the motherboard, follow the powercord down to where it splits. It will be connected to the motherboard in two places with solder. Locate these two points.

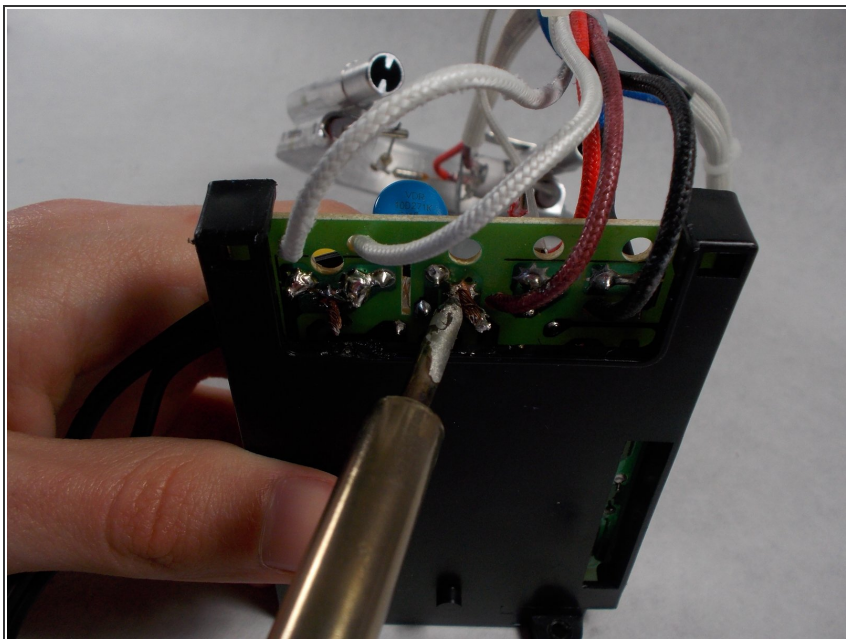
## Step 5



- Using a soldering iron, heat up one soldered point that is holding the power cord in place. While the solder is hot, carefully pull the cord out of the connection.

⚠ The wire will be hot. You may want to use pliers to remove it.

## Step 6



- Locate the second half of the power cord. On the underside of the motherboard, heat up the soldered connection and remove the wire while the solder is hot.
- ⓘ When replacing any soldered components, you may want to apply new solder.

To reassemble your device, follow these instructions in reverse order.