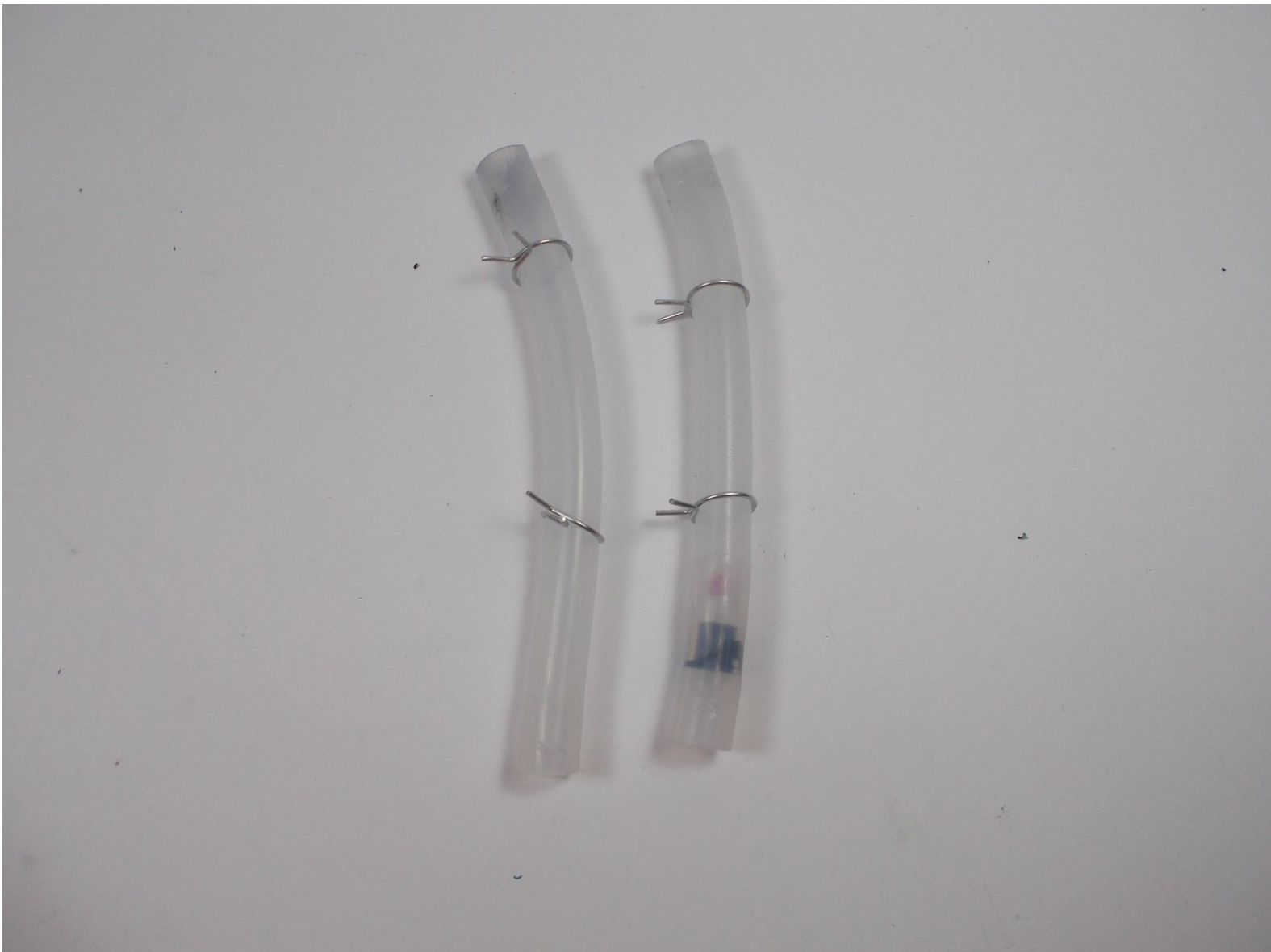




Hamilton Beach 49980A Water Tubes Replacement

This guide will fix any issues with water not dripping into the coffee grounds and then into the coffee pot.

Written By: Brandon Haghighi



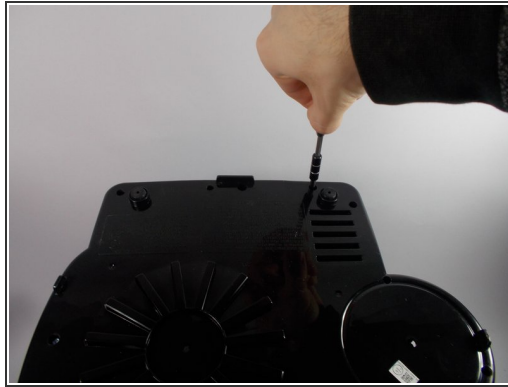
INTRODUCTION

By following this guide, you will learn how to properly remove and install new water tubes into your Hamilton Beach 49980A

TOOLS:

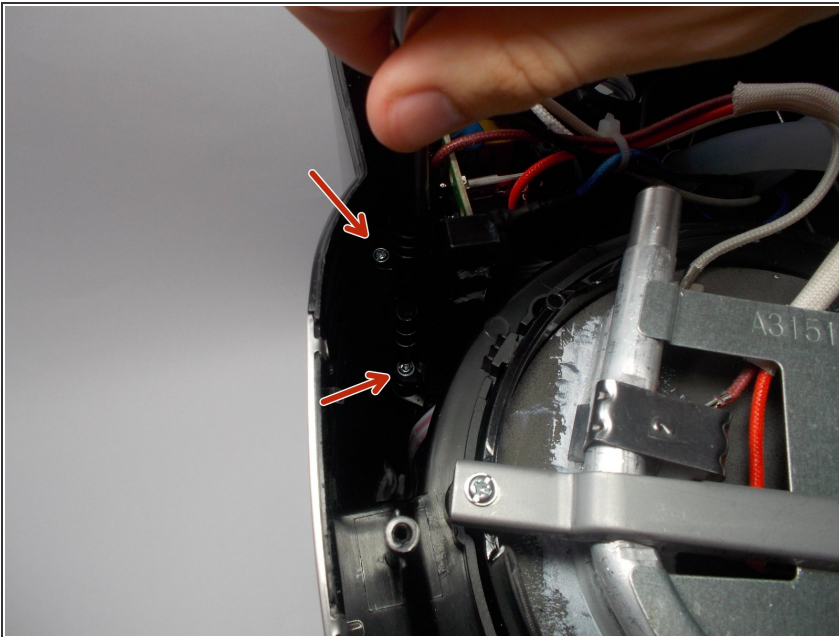
- [Tri-point Y0 Screwdriver](#) (1)
 - [Phillips #1 Screwdriver](#) (1)
 - [Spudger](#) (1)
-

Step 1 — Bottom Plate



- Begin by inverting the coffee maker and resting it on a flat surface to make working on the bottom easier.
- Now use a Y0 bit to remove all of the .46 inch long screws from the bottom.
- Lift the plate to remove it from the rest of the machine.

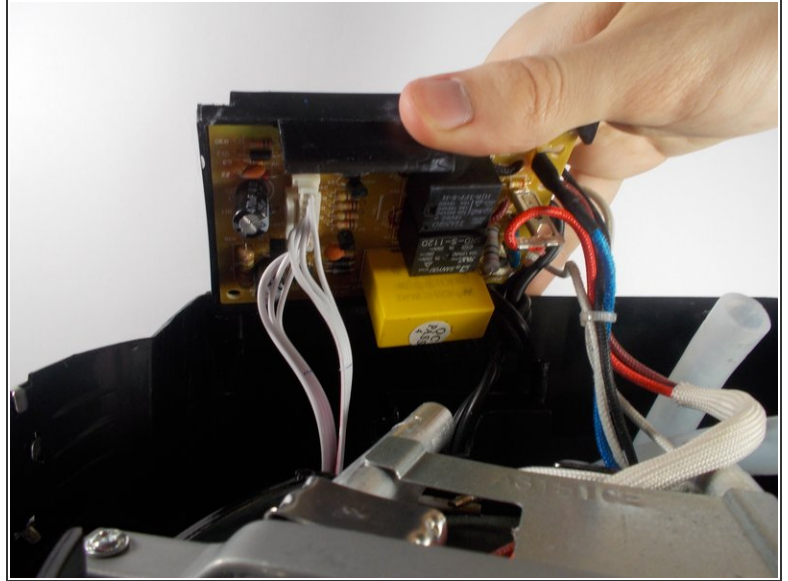
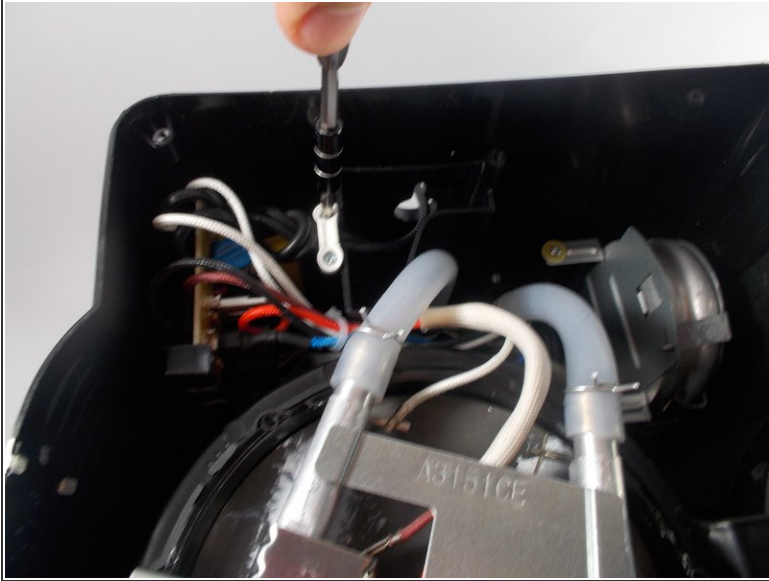
Step 2 — Motherboard



- Once the bottom plate is removed, use a PH1 bit to remove the .525 inch long screws holding the

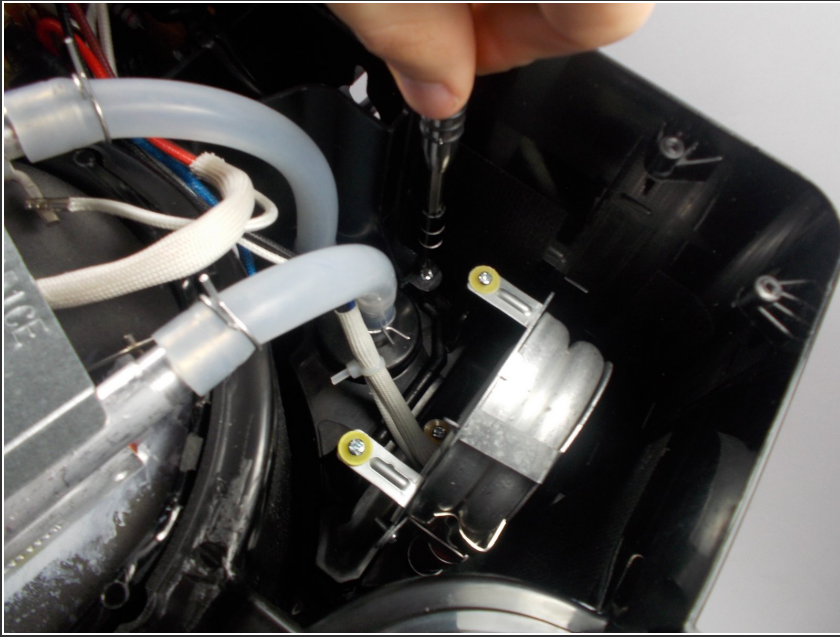
motherboard bracket in the main housing.

Step 3



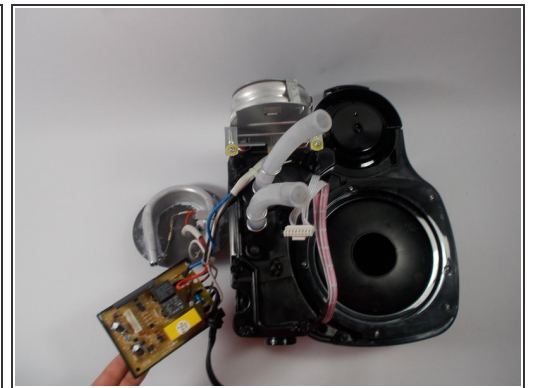
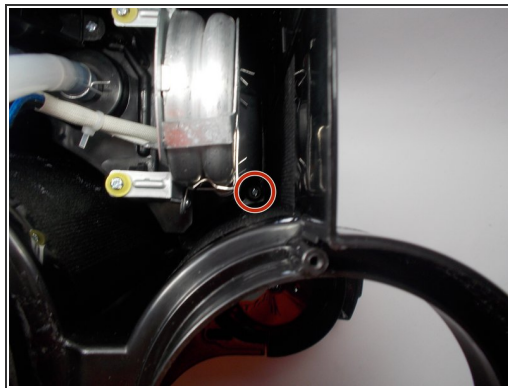
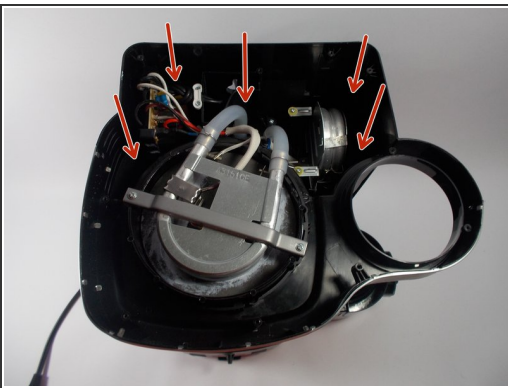
- Using a PH1 bit, remove the two .425 inch long screws holding down the white power cord bracket. This will give you the slack in the wire that you need to work on the motherboard.
- Carefully remove the large white connector that has multiple wires attached to it. This is the wire connected to the button functions on the interface of the coffee maker.

Step 4 — Main Housing



- After removing the motherboard. Proceed to remove the inner housing which holds the excess power cord. This can be removed by using the PH1 bit to remove the .525 inch long screws that hold the housing in the main housing.
- ⓘ This step is crucial because if this inner housing is left attached, the power cord will bind between the two pieces that slide past each other during removal of the main housing.

Step 5



- Use a long screwdriver with the PH1 bit to access the screws holding the main housing to the top of the machine.
- Pull main housing up and be sure to run all of the inner parts through the cavity at the bottom. This may take a few tries since components can easily get caught on each other

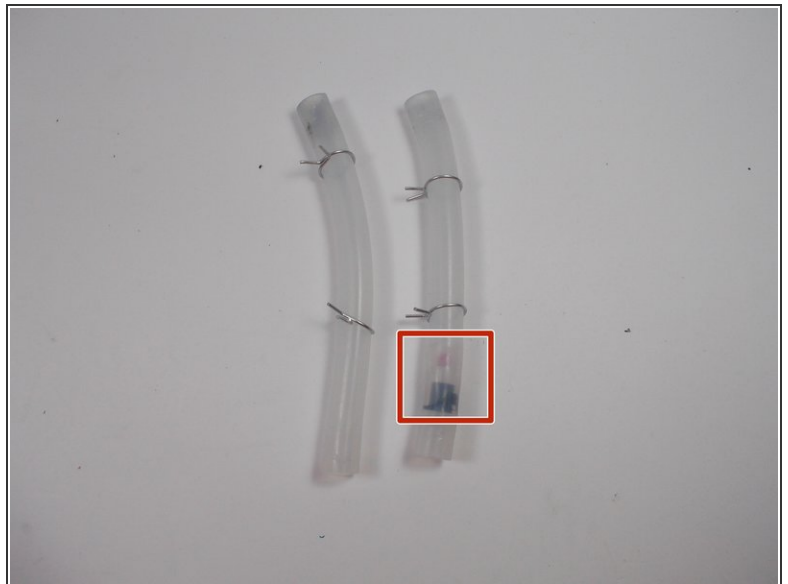
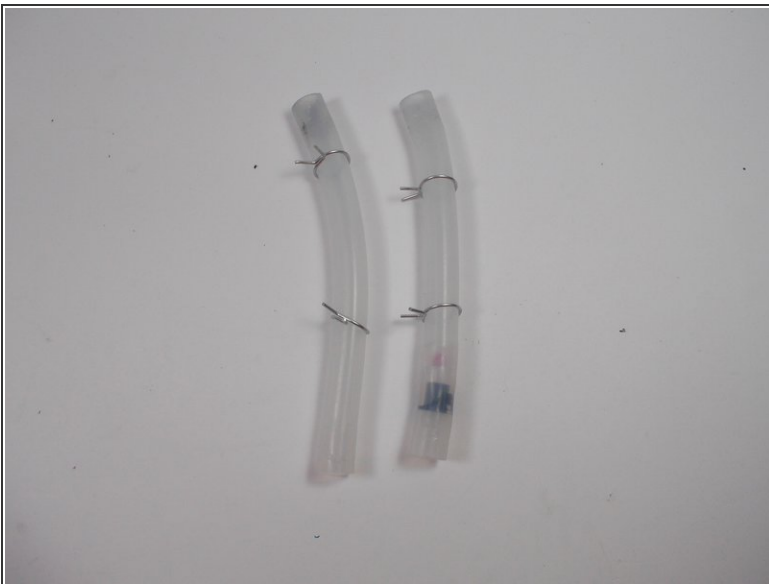
Step 6 — Water Tubes




- locate the bottom two spring clamps on the tube attached to the base of the coffee maker. Pinch these clips while pulling up to release the tube from the base.

 Pliers will make this task easier

Step 7



- After pushing the clips down, pull the tube from the base. This may be difficult, so use a spudger to pry the tube off as you hold the base down.
-  When replacing the water tubes, be sure to remove the apparatus from the tube on the right and insert it into the new tube.

To reassemble your device, follow these instructions in reverse order.