



# Hamilton Beach 51101BA Power Button Replacement

In completing this guide you will have fixed the power button to your blender. Soldering experience required.

Written By: Brandon Nunez



# INTRODUCTION

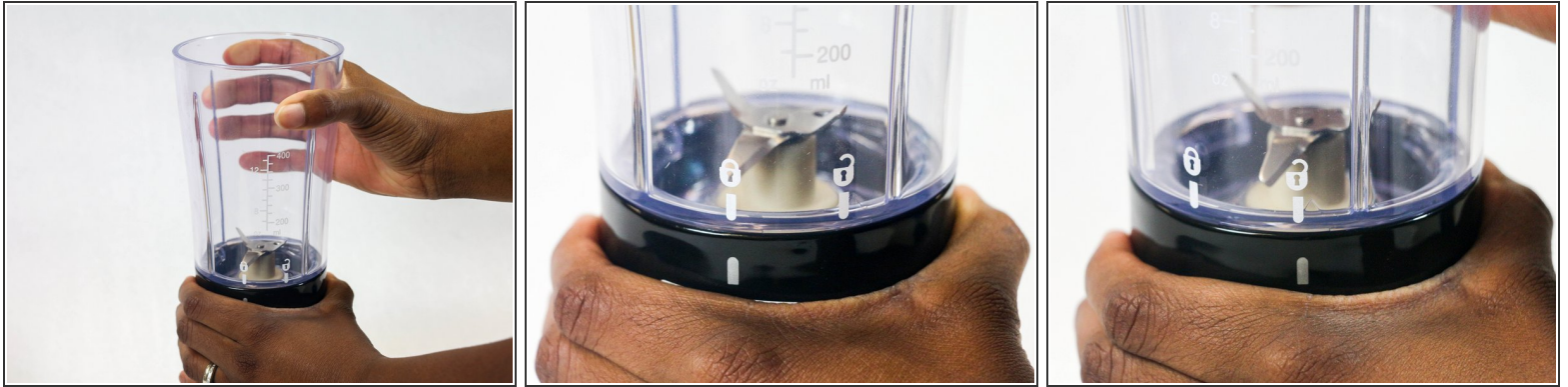
After using this guide you will have learned how to replace the power button to your blender. You will need to use basic tools and soldering to complete this guide.

---

## TOOLS:

- [Spudger](#) (1)
  - [Soldering Iron](#) (1)
  - [Phillips #2 Screwdriver](#) (1)
-

## Step 1 — Power Button



- Remove the container from the base.
- Hold the blender and the container, then twist the container in a clockwise motion.
- ⓘ Make sure to follow the lock and unlock markings on the container.

## Step 2



- Turn the blender so the bottom is facing you.
- Using a Phillips #2 screwdriver, remove the two 5 mm Phillips screws from the base.

### Step 3



- Using a Phillips #2 screwdriver, remove the two 5 mm Phillips screws from the motor platform.

### Step 4



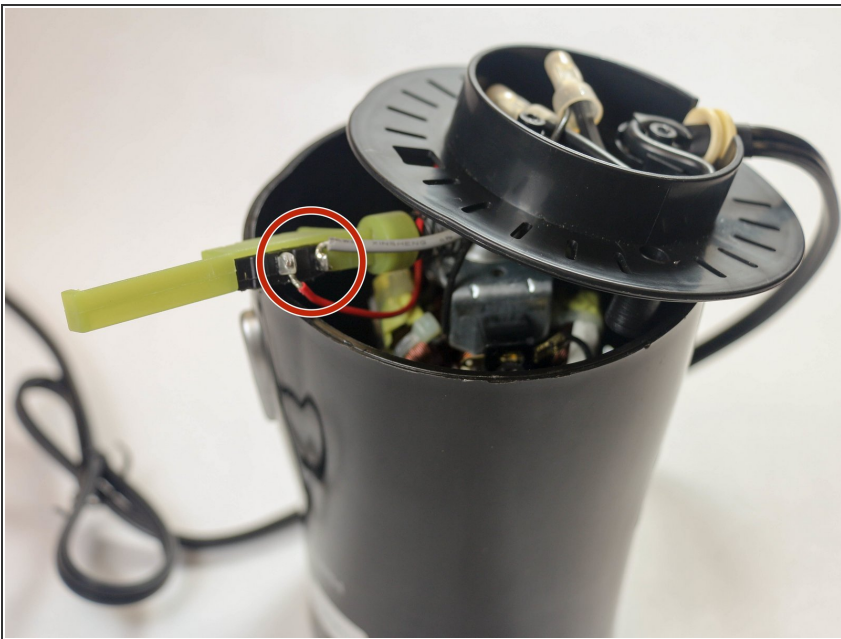
- Unhinge the motor platform from the blender.
  - ❗ You may need a plastic spudger to unhinge the plastic bottom piece from the base of the blender.
  - ❗ You do not need to completely remove this piece from the base.

## Step 5



- Pull out the rectangular green piece.
- ⓘ This is the actual power button.

## Step 6



- ⚠ Some experience in soldering is required!
- On the back of the power button, desolder the red and grey wires that are connected to the piece.

To reassemble your device, follow these instructions in reverse order.