



Hamilton Beach 64650 Quick Burst Button Replacement

The quick burst button is broken and is in need of replacement.

Written By: Gwen Davis



INTRODUCTION

This page will guide you through the replacement of the quick burst button on your Hamilton Beach Classic Stand Mixer 64650. This guide is helpful if you are experiencing any problems with using the quick burst button on your device. It is possible that either the button assembly is broken or the spring keeping the button in place is broken, so you'll have to open it to check it out!



TOOLS:

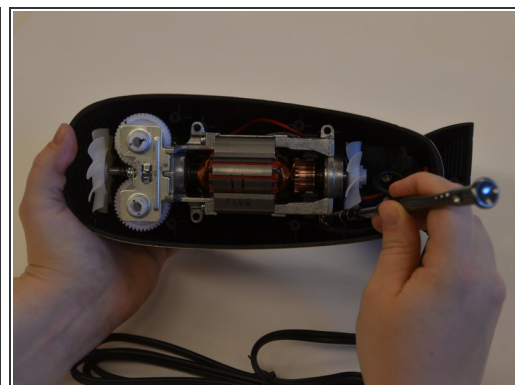
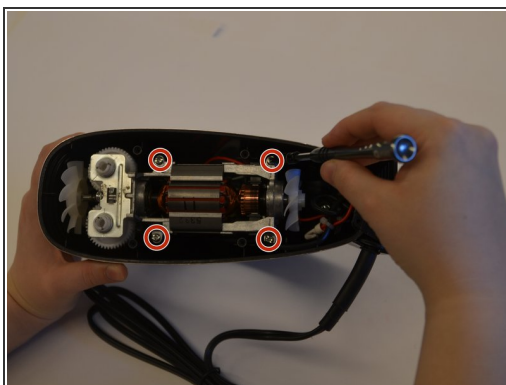
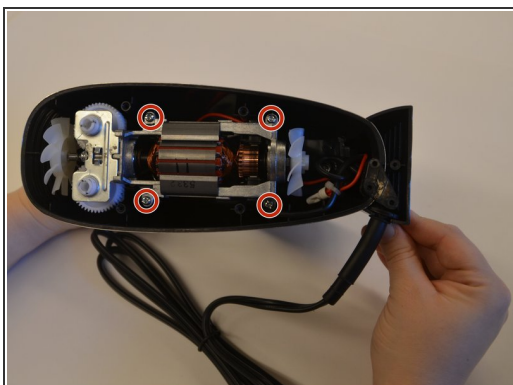
- [Soldering Iron](#) (1)
 - [Solder](#) (1)
 - [iFixit Opening Tools](#) (1)
 - [Phillips #2 Screwdriver](#) (1)
-

Step 1 — Motor



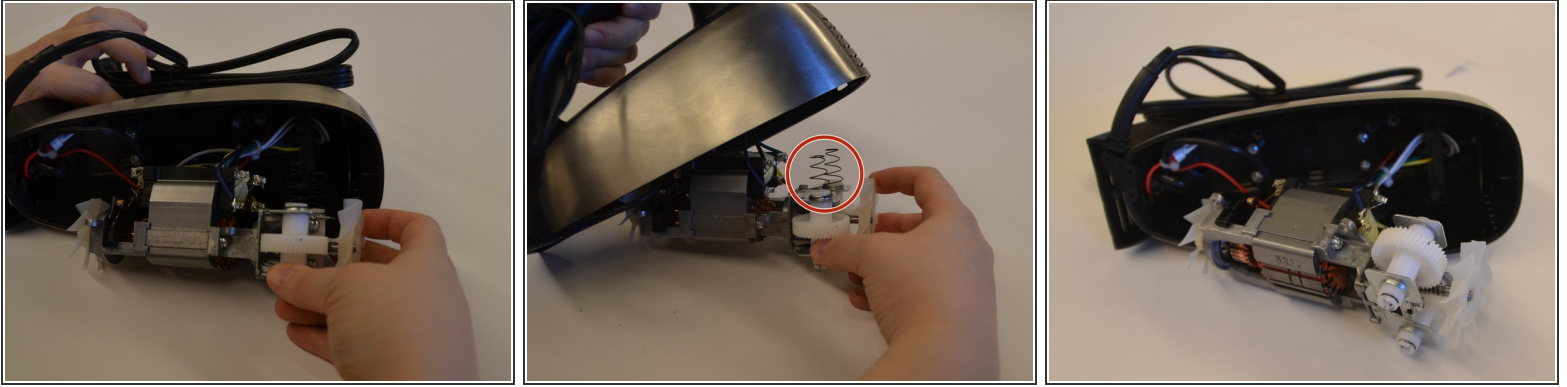
- Flip the handle on its side. Remove five 3.8 mm Philips #2 screws shown and set aside them aside.

Step 2



- Remove the four 8.6 mm Philips #2 screws securing the motor mount and place them aside.

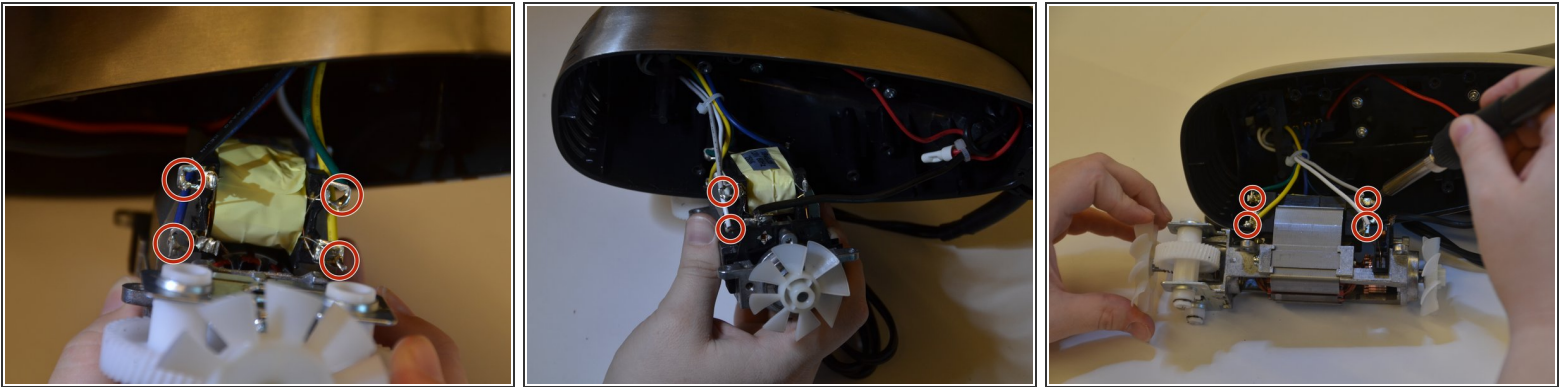
Step 3



- Carefully pull the motor block out of the case.
- Collect the two spring located on top of the white beater gears. The springs are held in place with compression, and may fall into the case when the motor is moved.

⚠ Handle the wires with care to ensure you do not break any of them.

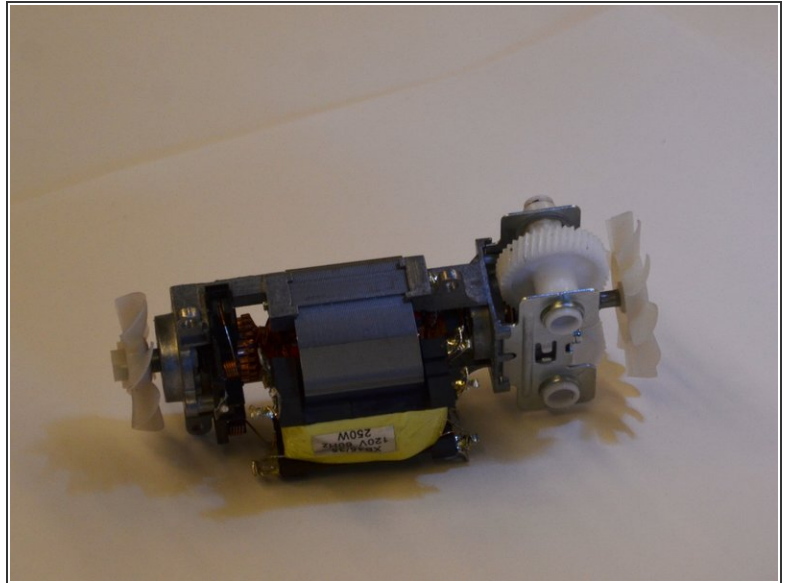
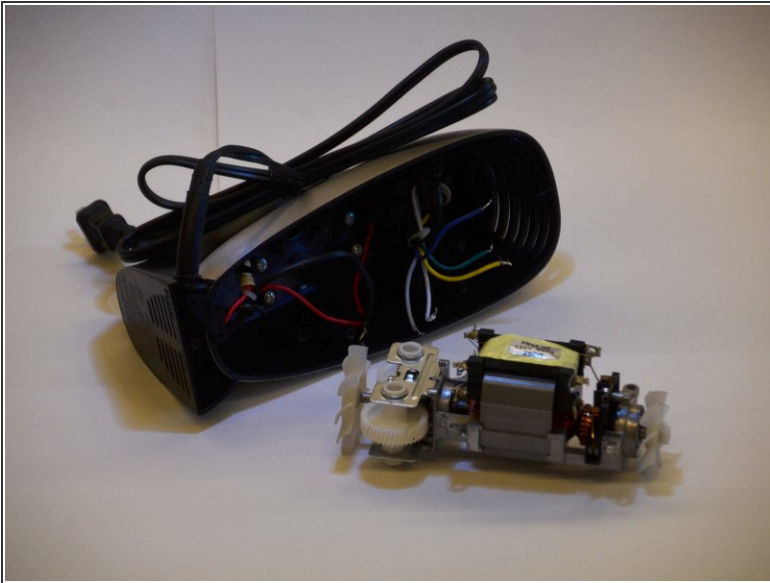
Step 4



- Desolder the six wires connected to the motor using [this guide](#).

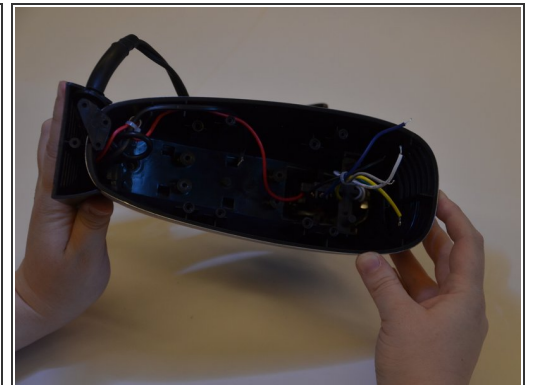
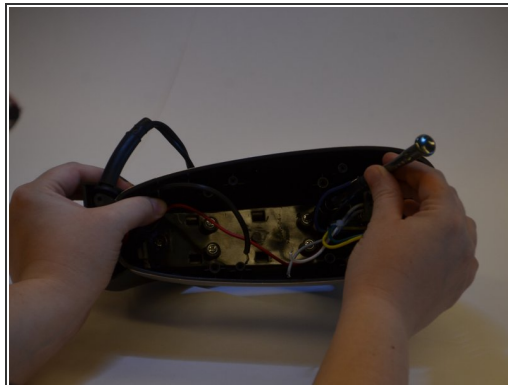
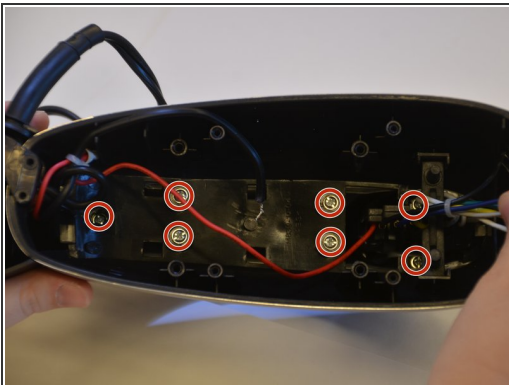
⚠ Make sure to note colors when you disconnect them and remember where to reconnect them later.

Step 5



- Once disconnected, the motor will slide out easily.

Step 6 — Quick Burst Button



- Remove the seven 1.3 mm Philips #2 screws that attach the motor casing to the mixer handle and set them aside.

Step 7



- Use a plastic opening tool to take off the handle's cap by loosening both ends and then sliding the tool to the middle of the handle.

Step 8



- Lift the handle cap upward once it is loose.
- ⚠ Be careful when you remove the handle cap as the quick burst button likes to fly away.
- Replace the button assembly as needed.

To reassemble your device, follow these instructions in reverse order.