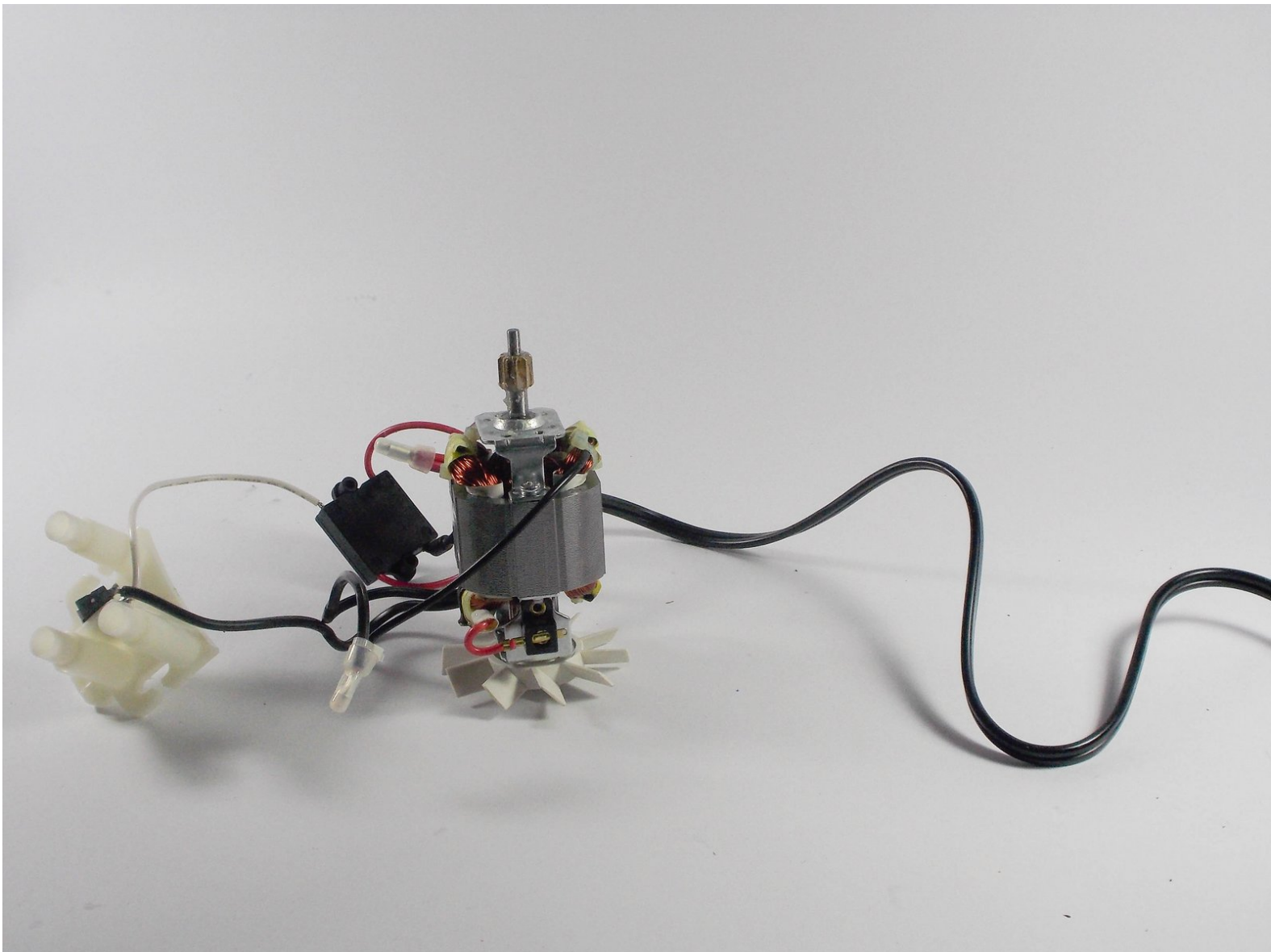




# Hamilton Beach 70730 Motor Replacement

This is a guide to replace the motor of your Hamilton Beach product.

Written By: Mack Bernard



---

## INTRODUCTION

The motor is what runs the drive shaft. Without the motor, the drive shaft would not operate, as well as the blade. Replacing the Motor requires a some patience and time.

---

### TOOLS:

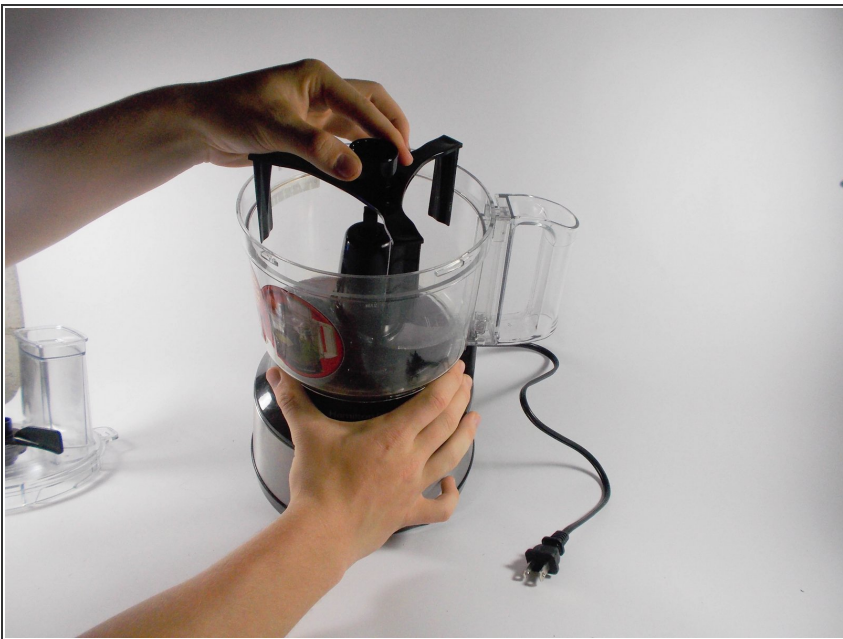
- [64 Bit Driver Kit](#) (1)
  - [Metal Spudger](#) (1)
-

## Step 1 — Bowl



- Remove the cover by turning it in the counterclockwise direction.

## Step 2



- Remove the bowl scraping mechanism by simply grabbing the middle section and lifting.

### Step 3



- Remove the blade mechanism by lifting it off of the blade shaft.

### Step 4



- Place hands on bowl and turn it gently, but firmly, counter-clockwise.



## Step 5



- ❗ Make sure there is no food or grime along the outside sides of the bowl or the base.

## Step 6 — Switch



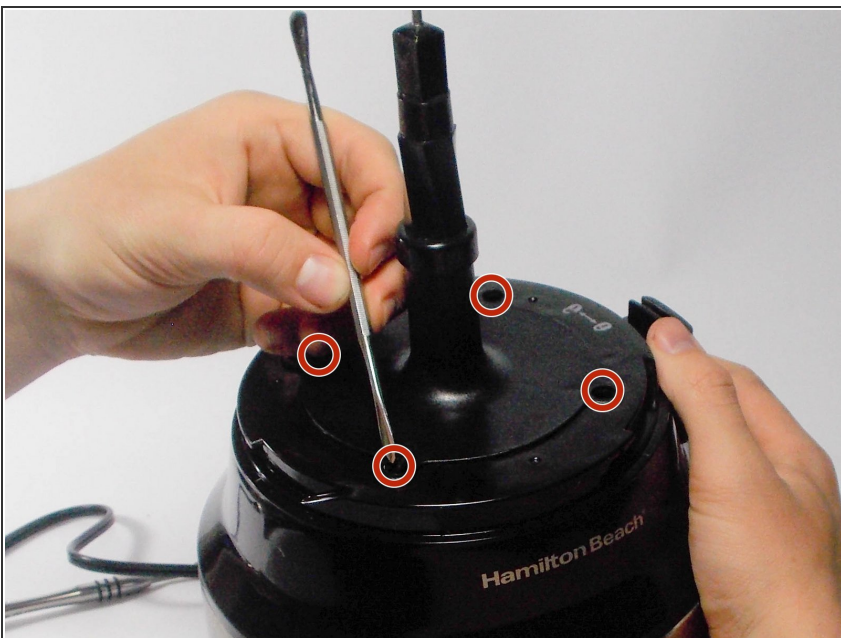
- Bring the device to its upright position.

## Step 7



- Using a metal spudger, pry the switch from the front of the device.

## Step 8 — Drive Shaft



- Using the metal spudger, remove the four adhesive plastic covers that hide the screws.
- ⓘ These covers are adhered to the screws.

## Step 9



- Remove any access glue that is adhered to the screws with the precision tweezers.

## Step 10



- Using a JIS #1 driver, remove the four 10 mm screws.



## Step 11



- Lift the drive shaft.

## Step 12 — Motor



- Remove the set of three gears. You should be able to simply lift it out.



## Step 13



- Unscrew the four 8 mm JIS #1 screws.
- ⚠ There will be lubricant on the screws.

## Step 14



- Flip the food processor over so the bottom is visible.

## Step 15



- Using a JIS #1 screwdriver, remove each of the four suction cups that are attached to the bottom of the food processor.

## Step 16



- Using a JIS #1 screwdriver, remove the four 12 mm screws on the bottom.
- ⓘ The screws are recessed about 3 mm inside of the food processor and may not be very visible.

## Step 17



- Using a JIS #1 screwdriver, unscrew the two 4 mm screws underneath the on/off switch.

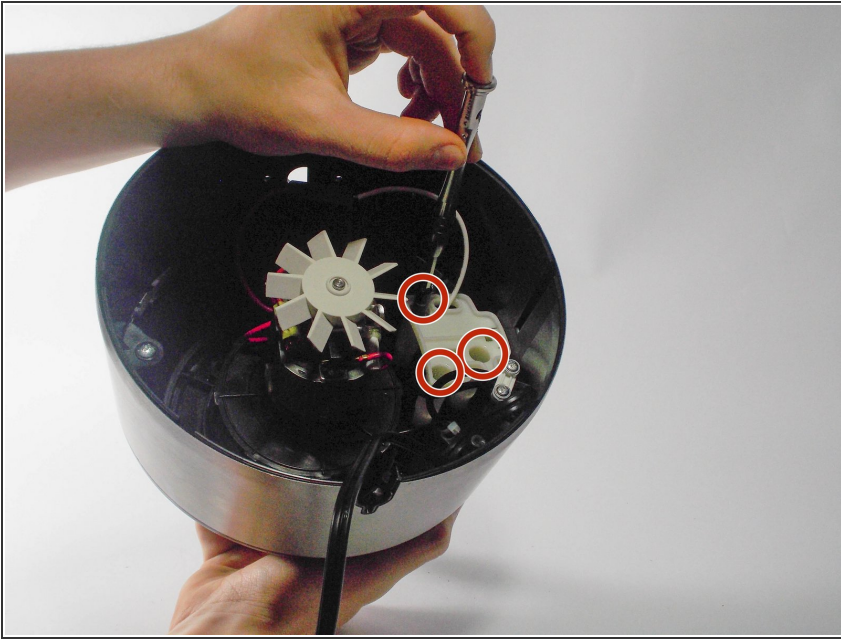
## Step 18



- Remove the base of the food processor, by gently pulling it away from the silver section.

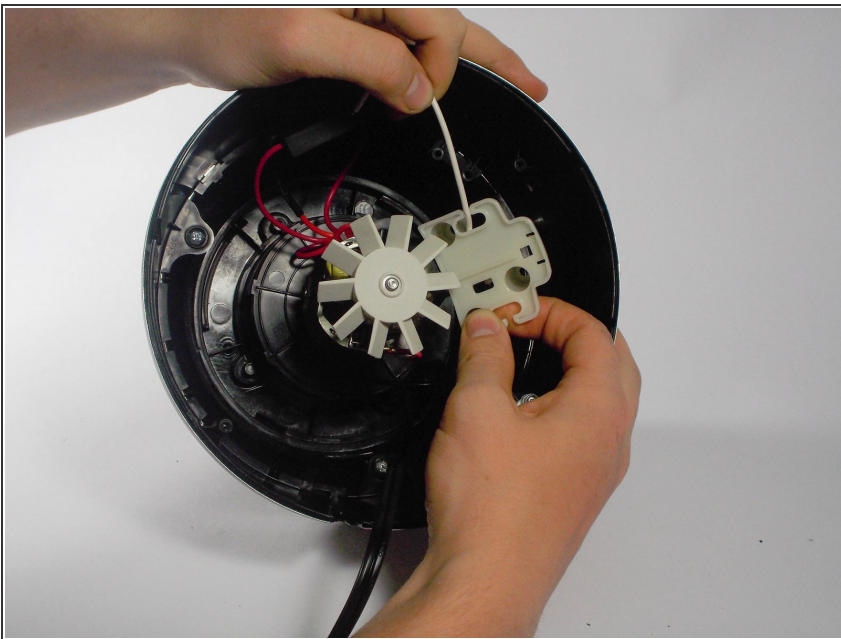


## Step 19



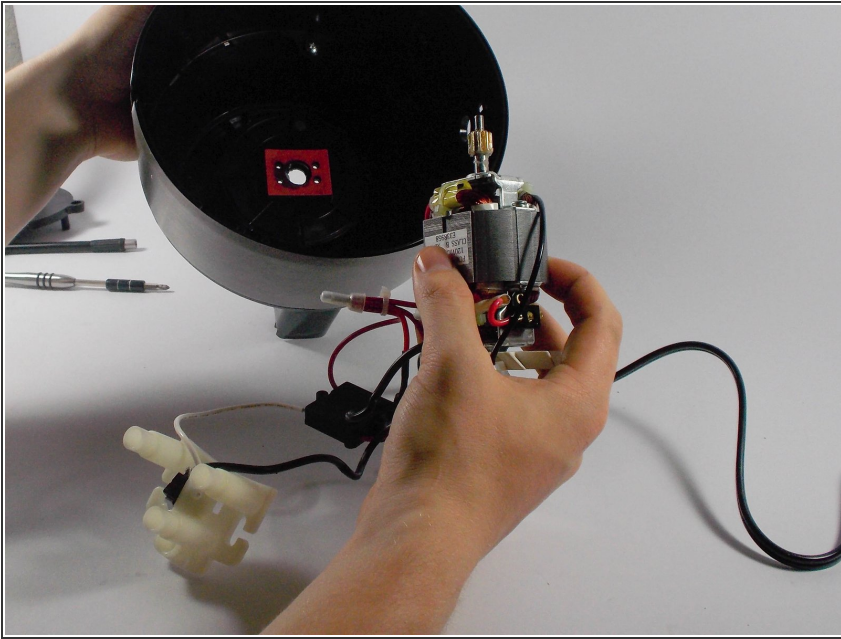
- Using a JIS # 1 screwdriver, remove the three screws on the white plastic piece inside the food processor. There are two white pieces - remove the one on the side.

## Step 20



- Remove the white piece, carefully sliding the wires on the sides through the small gaps.
- ⚠ Be careful not to dislodge the spring on the cylindrical white piece next to it.

## Step 21



- Remove the motor from the inside of the food processor. The motor should easily slide out.

To reassemble your device, follow these instructions in reverse order.