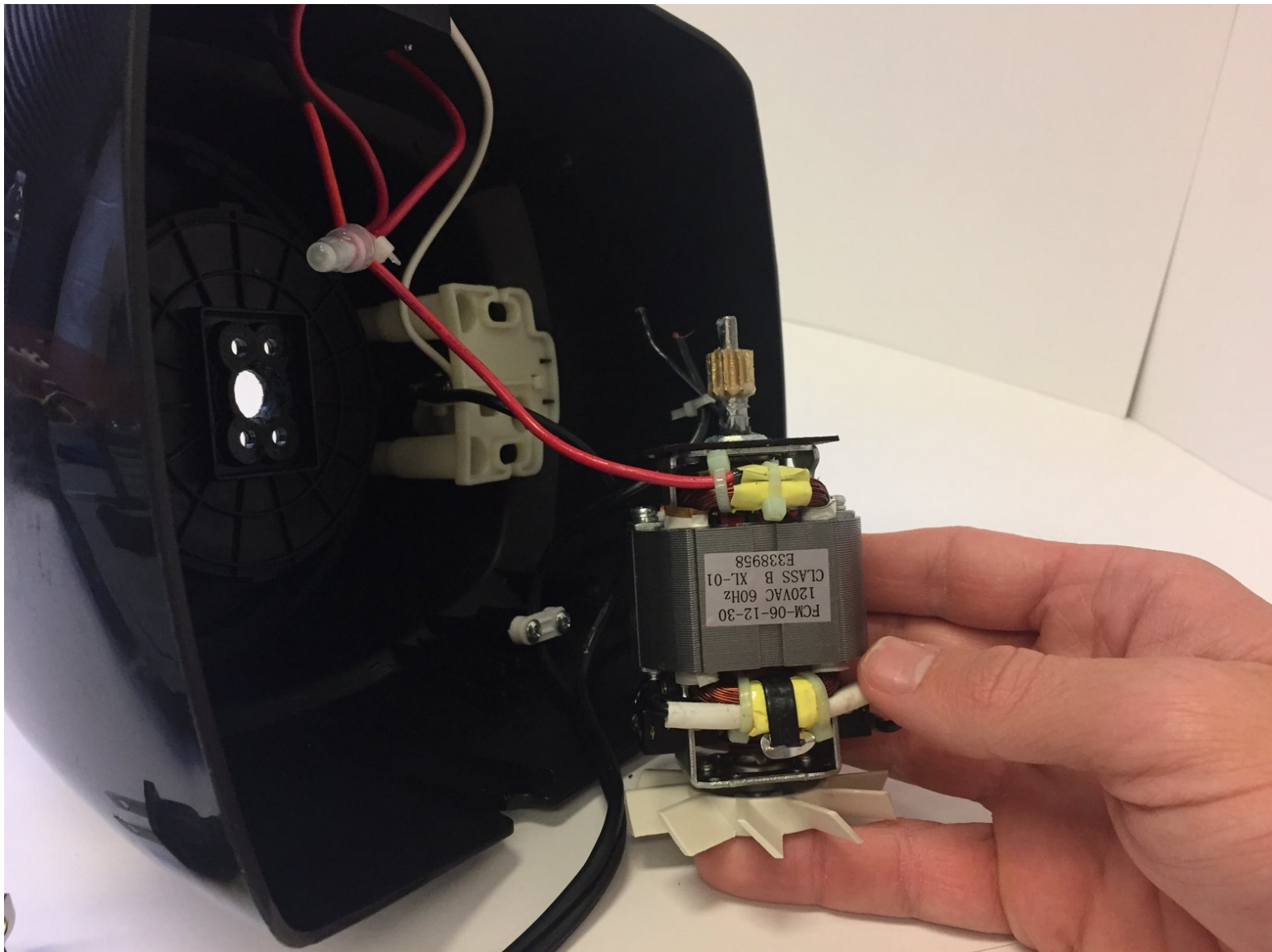




# Hamilton Beach 70740 Motor Replacement

Replacement of the Motor to allow processor to perform its primary function.

Written By: Travis Williams



---

## INTRODUCTION

Replacement of the drive motor. Be sure device is unplugged before beginning replacement.

---



### TOOLS:

- [Heavy-Duty Spudger](#) (1)
  - [Phillips #2 Screwdriver](#) (1)
  - [Wire stripper/crimping tool](#) (1)
-

## Step 1 — Bowl and Lid



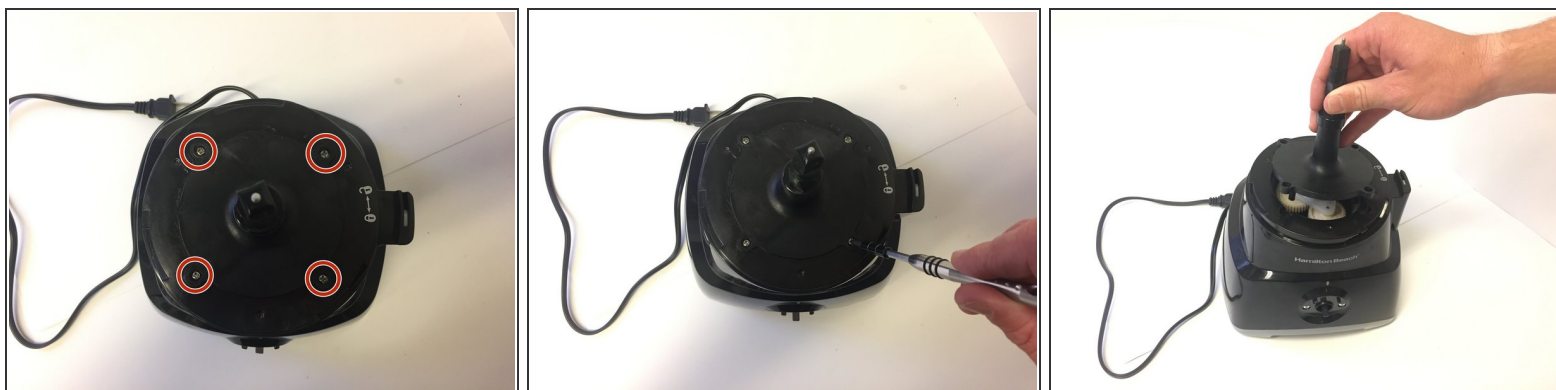
- Turn the bowl counterclockwise and lift.

## Step 2 — Gears



- Use the nylon spudger to remove the plastic screw covers.

### Step 3



- Using a #2 Phillips head screwdriver, remove the four 10 mm screws and pull the shaft straight upwards to uncover gears.

### Step 4



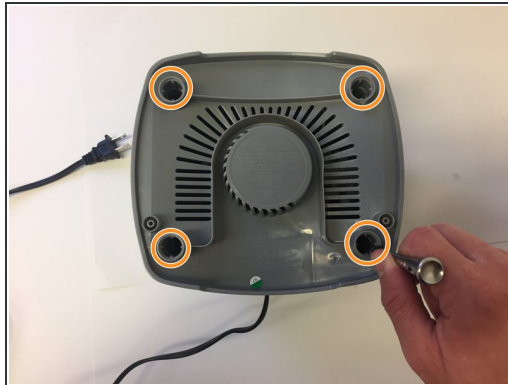
- Firmly grasp center piece of gear mechanism and pull straight upward.

## Step 5 — Motor



- Using a #2 Phillips head screwdriver, remove the two 11 mm screws and pull the rubber suction cups straight up.

## Step 6



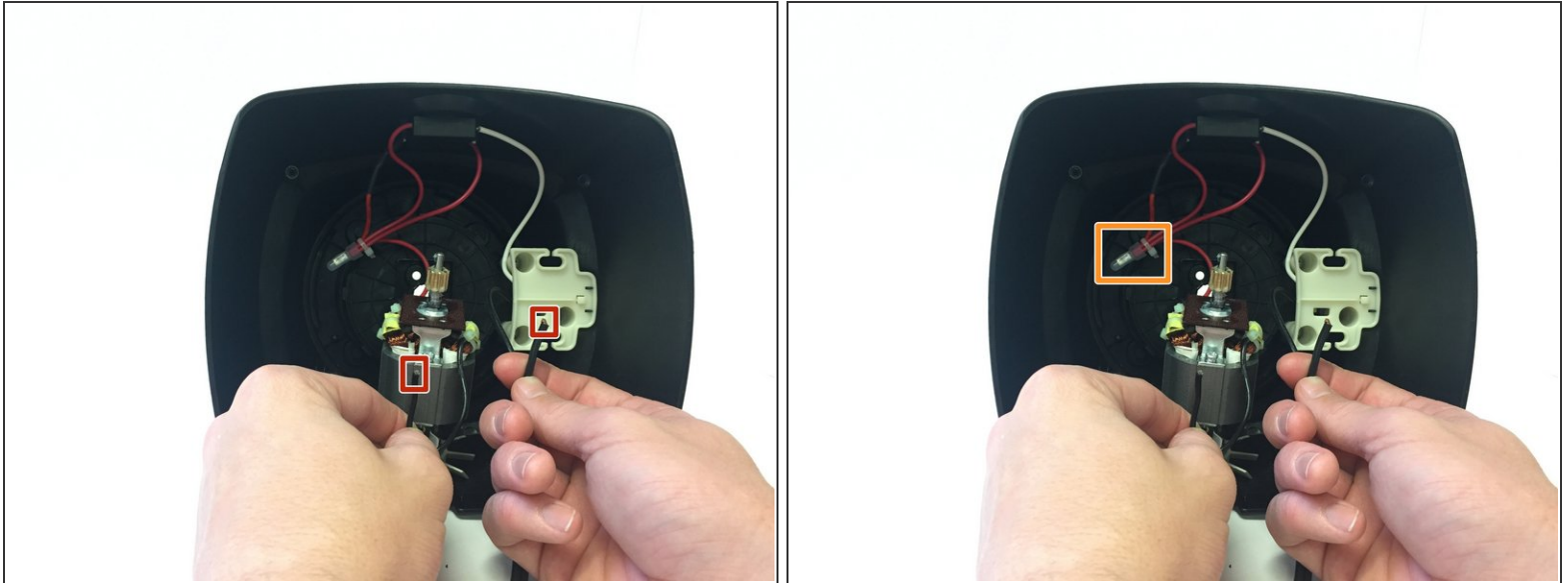
- Using the heavy duty plastic spudger remove the four rubber caps.
- Using a #2 Phillips head screwdriver, remove the four 11 mm screws inside each of the bases legs.
- Pull the base straight up to remove it from the processor.

## Step 7



- Using a #2 Phillips head screwdriver, remove the four 9 mm screws.
- From the open base pull the motor straight out.

## Step 8



- Using the wire stripper crimping tool cut the black wire connection from the power cord to the motor.
- Using the wire stripper crimping tool strip the ends of each of the black cords and insert them into the opposite ends of a parallel connector, then crimp firmly.
- Using the wire stripper crimping tool cut the four red wire connections from the switch to the motor and then rewire the four red wires together in a wiring connector cap.
- Using the wire stripper crimping tool strip the ends of each red wire and insert them into a new wiring connector cap, then crimp firmly.

To reassemble your device, follow these instructions in reverse order.