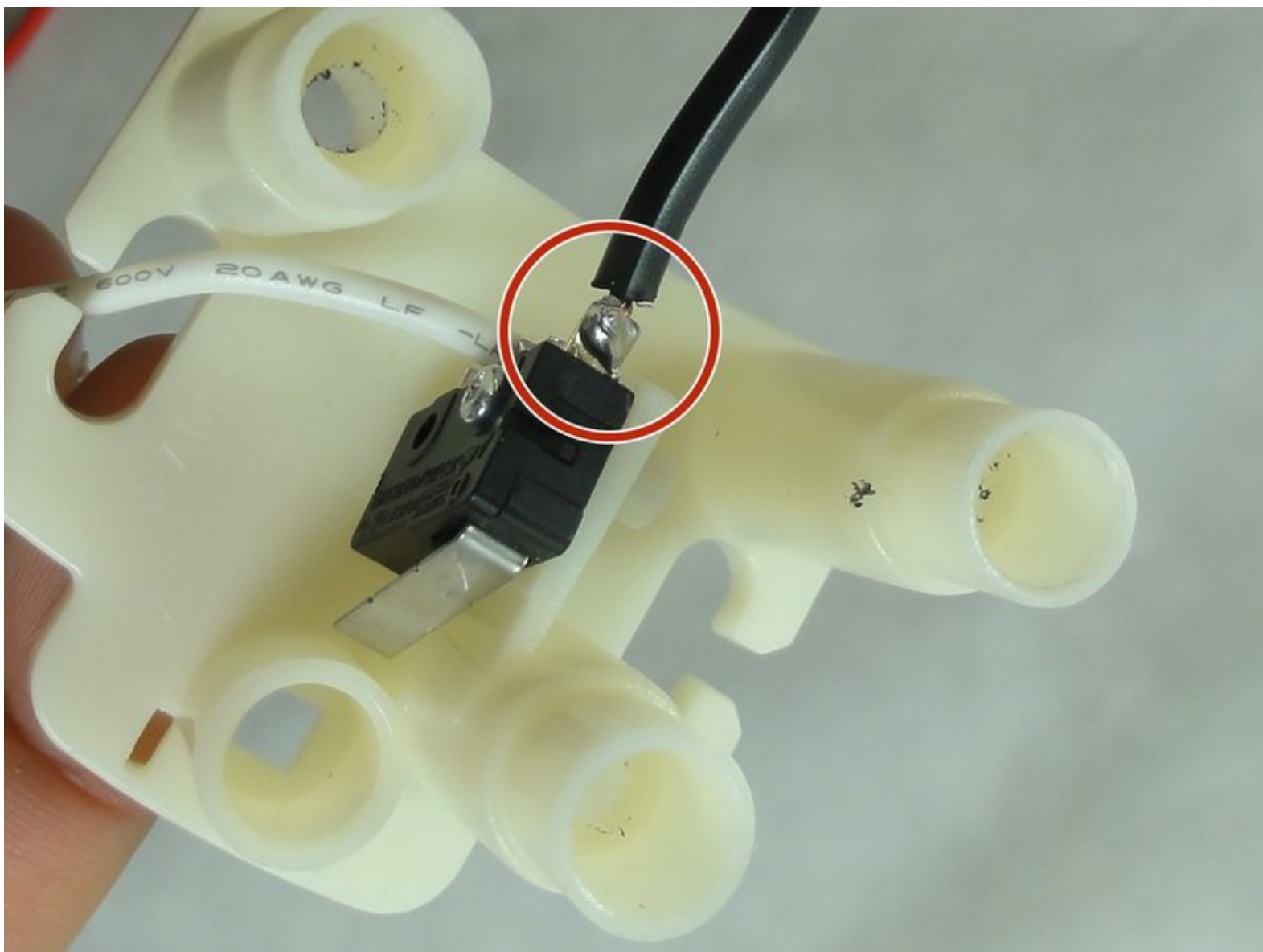




Hamilton Beach 70740 Power Cord Replacement

This guide is intended for replacing the ruptured or faulty Hamilton Beach Food Processor 70740 Power cord.

Written By: David Gedeon



INTRODUCTION

This guide may be useful for users who are experiencing power issues. This procedure requires a high technical skill in electrical soldering, along with moderate electrical wiring skills.



TOOLS:

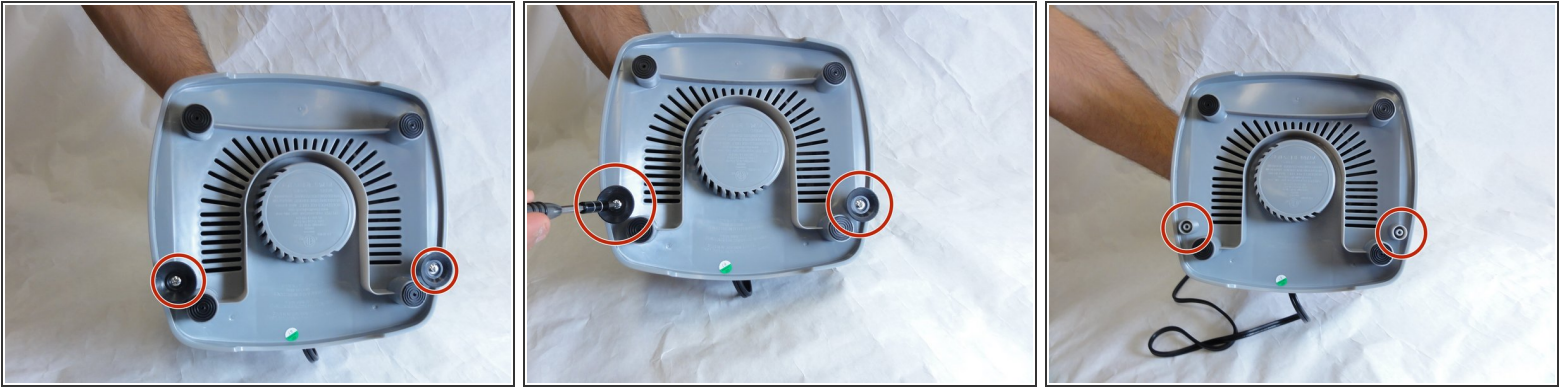
- [Soldering Iron](#) (1)



PARTS:

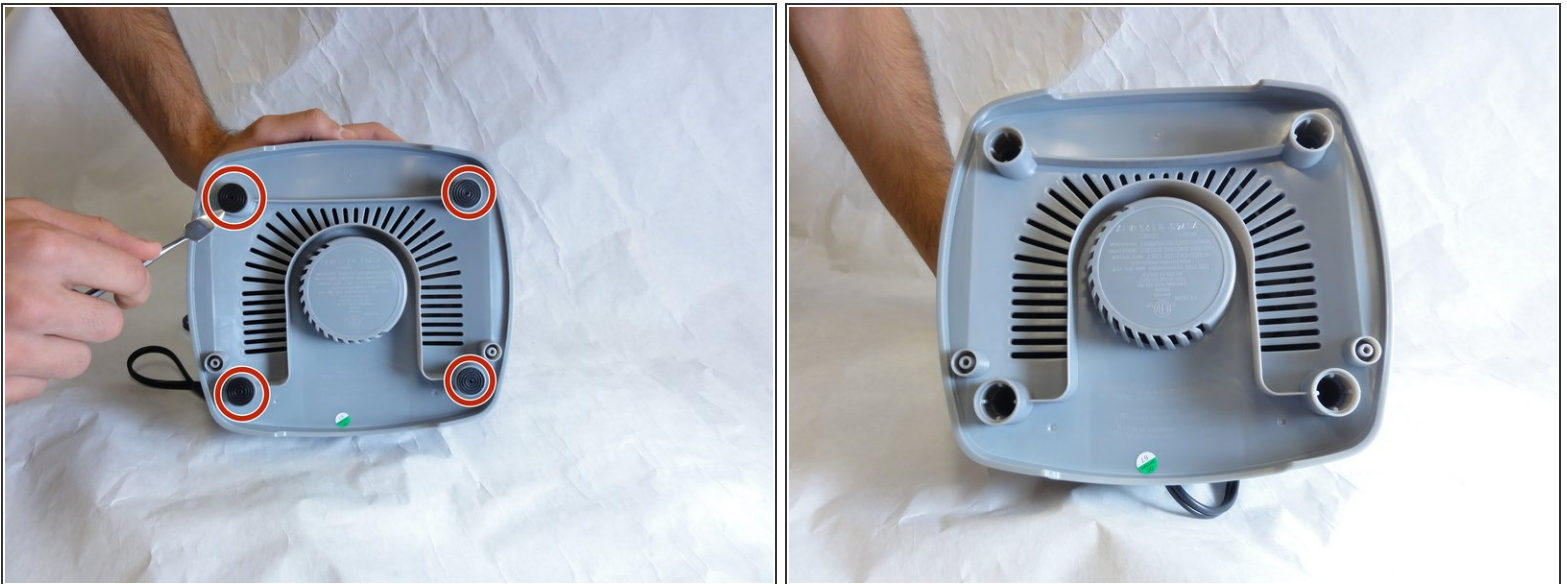
- [250 Watt power cord replacement](#) (1)

Step 1 — Base Removal



- Hold the food processor upside down and remove the two screws indicated with a screwdriver. Once unscrewed, remove the two rubber suction pads.

Step 2



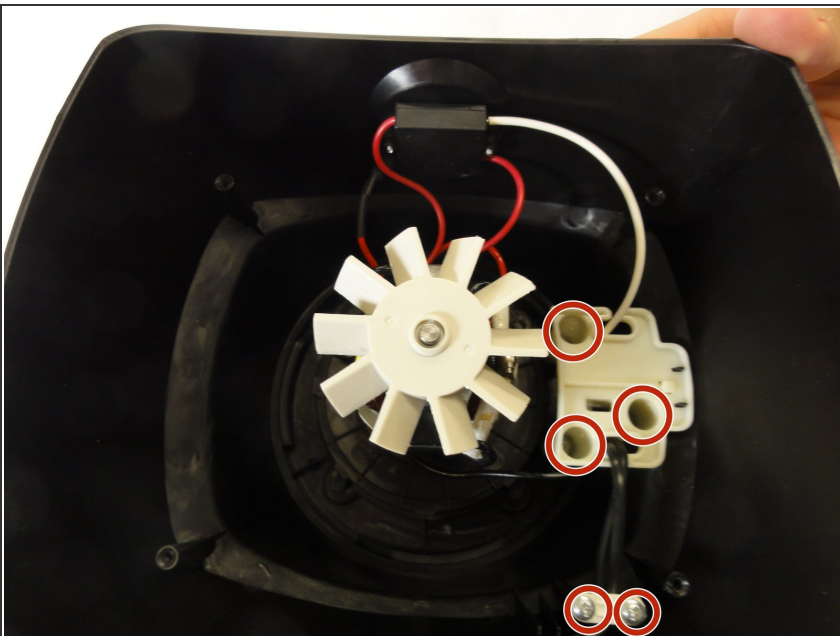
- Use a spudger to remove the 4 rubber base pads located at the corners of the device.

Step 3



- Unscrew all 4 screws that are located beneath the pads with a screwdriver and remove the plastic grey base.

Step 4



- Remove the screws indicated with a screw driver.

Step 5



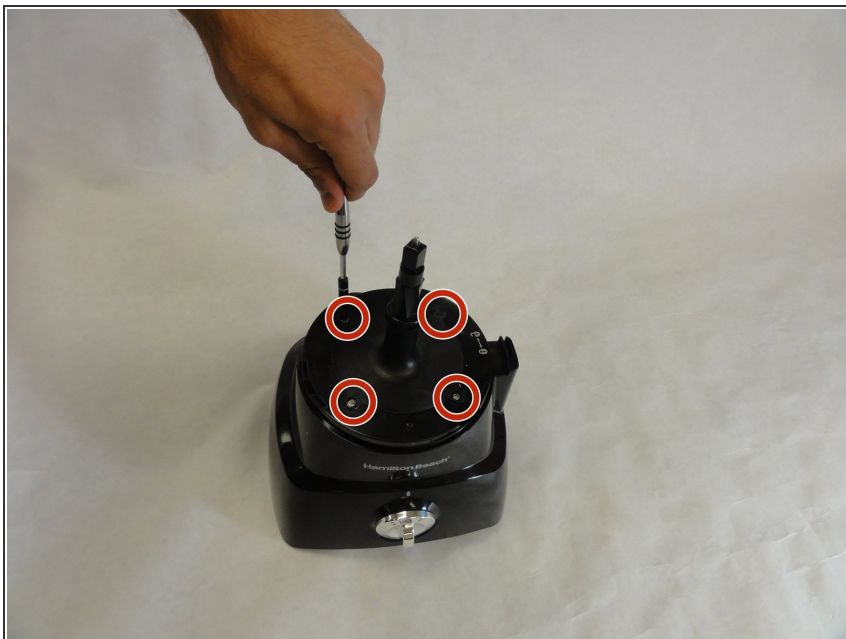
- Remove the two screws behind the knob with a screwdriver.

Step 6 — Motor/Cord



- Use a regular nylon spudger to remove the plastic caps at these locations with moderate pressure.
- ⚠ When working with electronics, it's important to choose a tool that's ESD-safe to avoid accidental damage to the device. The regular black nylon spudger or a plastic opening tool should be used whenever possible.
- ⚠ Apply pressure at the edge of the plastic cap circles. Apply stress elsewhere may damage the device.
- ⓘ Note that the plastic caps are glued

Step 7



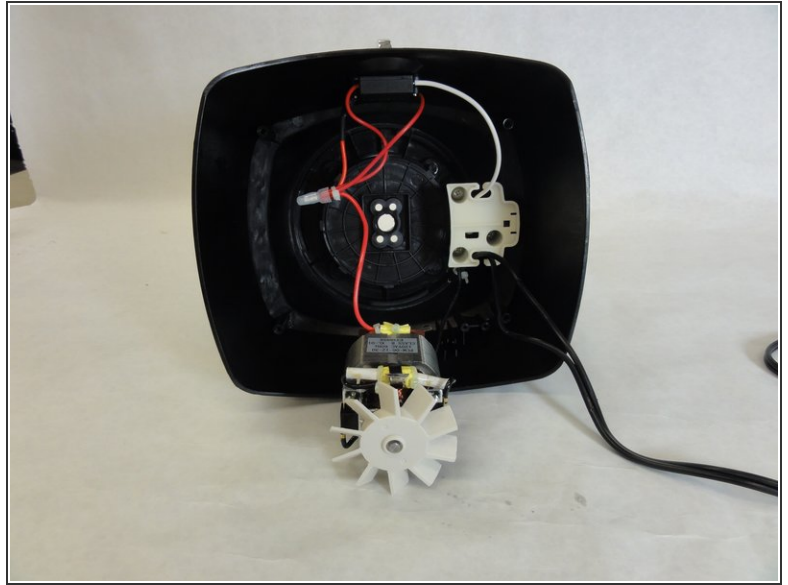
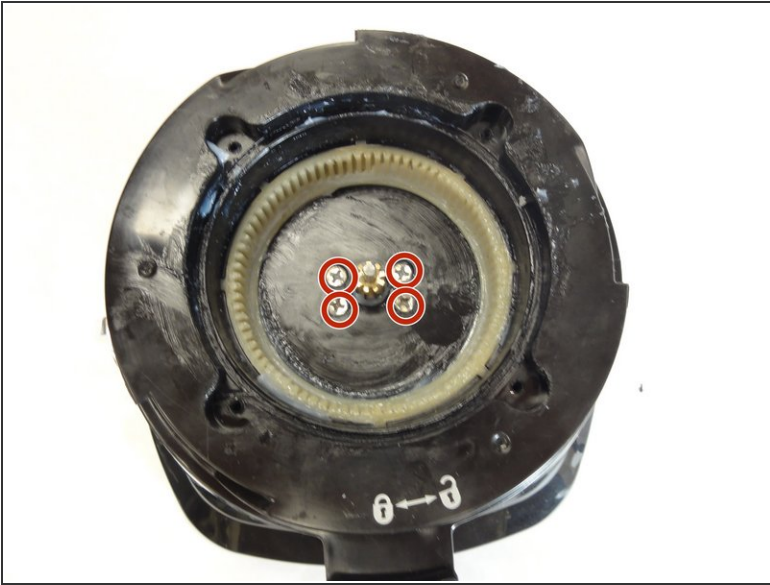
- Remove the 4 screws located under the plastic caps with a screw driver.

Step 8



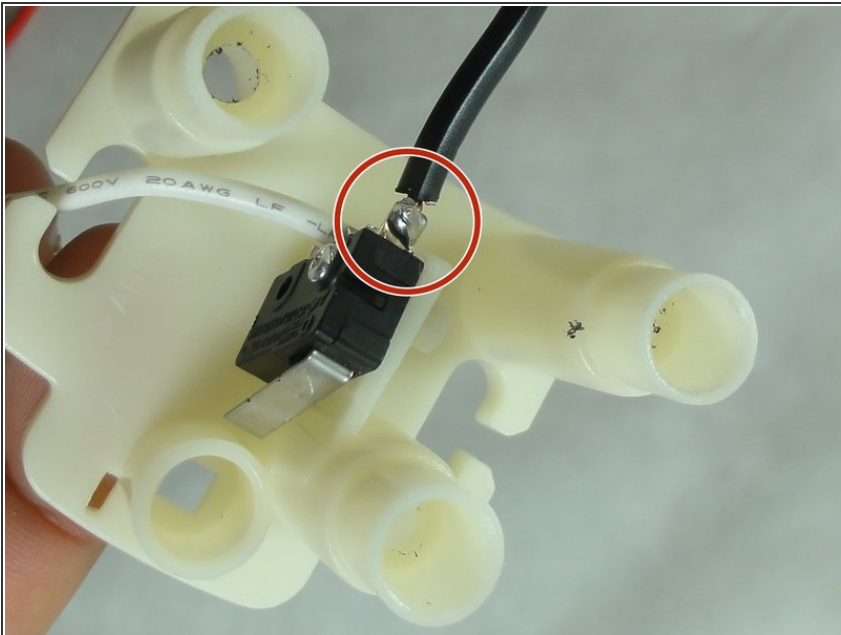
- Lift and remove the plastic gears at the center of the device.
- Remove any grease residue underneath the plastic gears.

Step 9



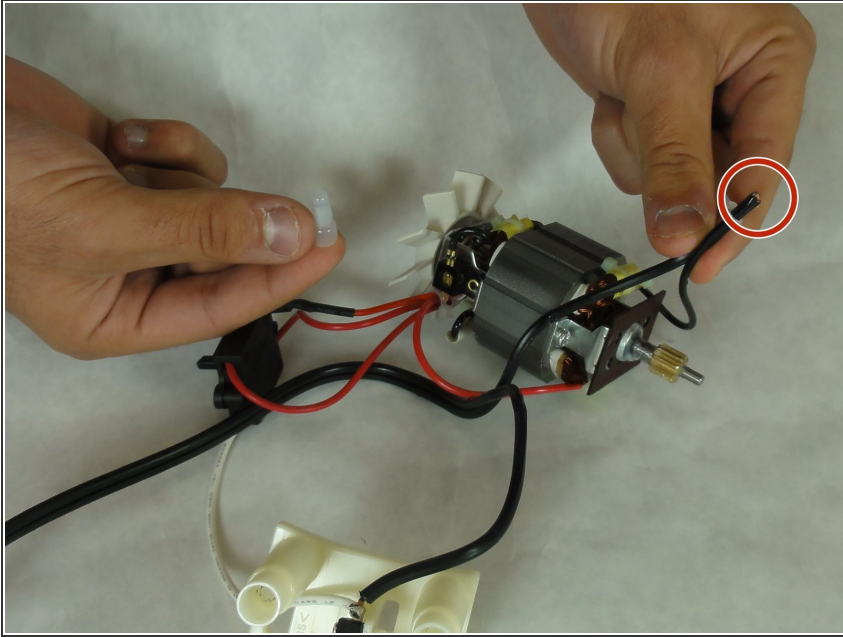
- Remove the remaining screws to unhinge the motor located at the center of the device using a screw driver.

Step 10 — Power Cord



- Solder the highlighted section of the power cord, and undo the wiring. Using soldering wire connect a new line with the soldering iron.
- ⓘ Learn more about soldering [here](#).

Step 11



- Connect the other end of your power cord to the motor terminal.

To reassemble your device, follow these instructions in reverse order.