



Hamilton Beach Food Processor 70740

Motor/Cord Replacement

Prerequisite Only

Written By: David Gedeon



INTRODUCTION

This procedure requires a moderate level of electrical wiring experience, and a few listed tools.



TOOLS:

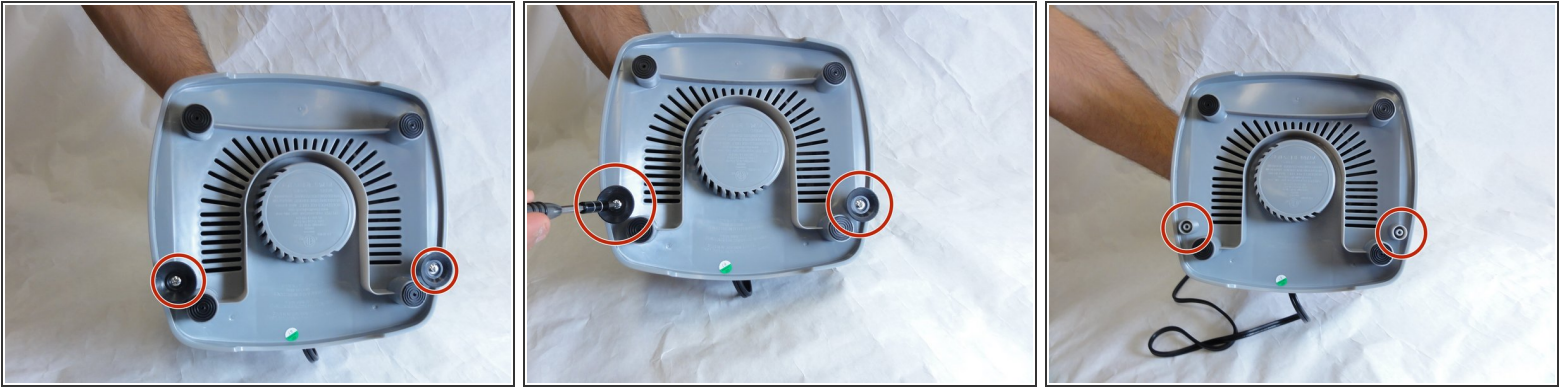
- [Spudger](#) (1)
- [64 Bit Driver Kit](#) (1)
- [Metal Spudger](#) (1)



PARTS:

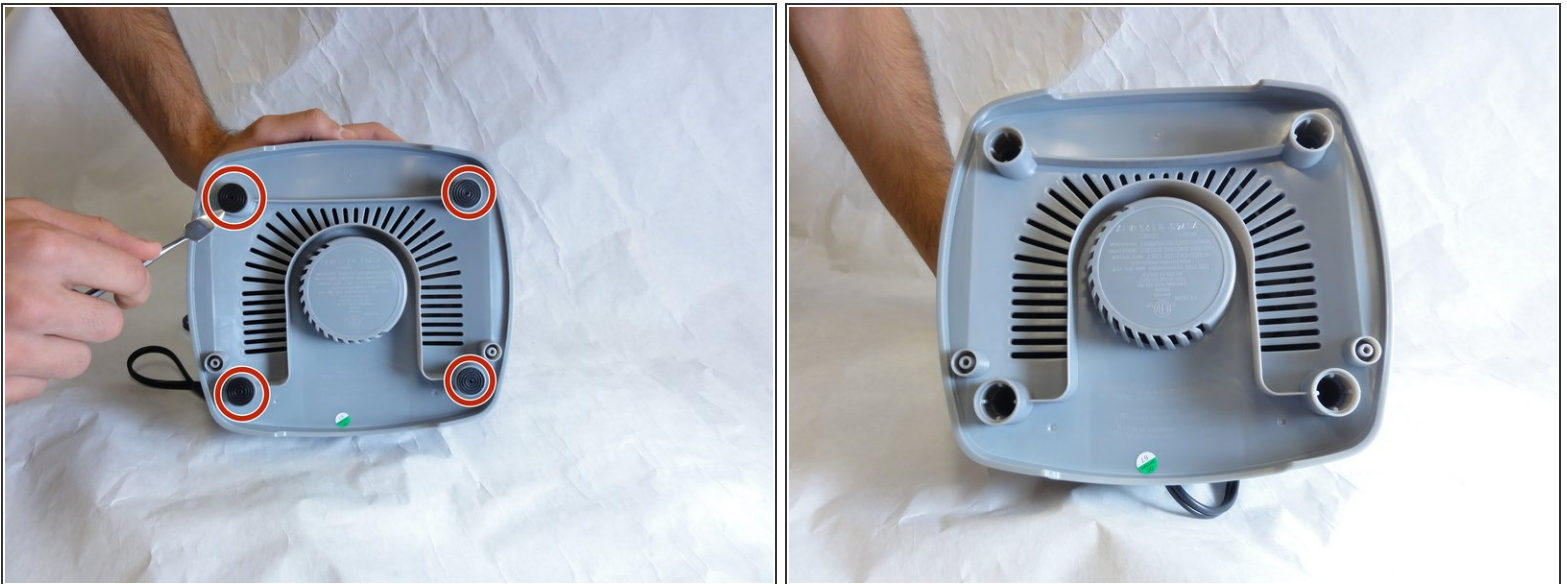
- [Hamilton Beach 70740 Motor](#) (1)

Step 1 — Base Removal



- Hold the food processor upside down and remove the two screws indicated with a screwdriver. Once unscrewed, remove the two rubber suction pads.

Step 2



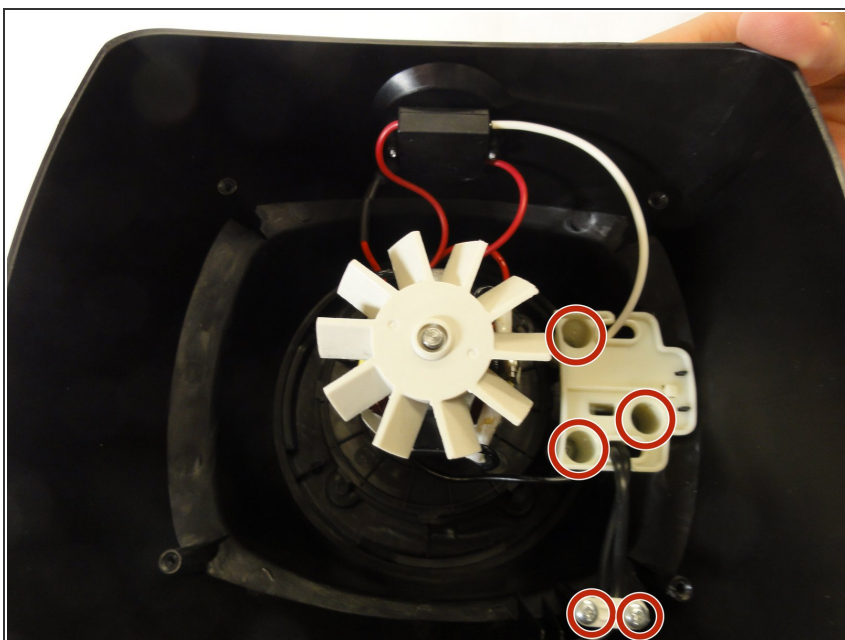
- Use a spudger to remove the 4 rubber base pads located at the corners of the device.

Step 3



- Unscrew all 4 screws that are located beneath the pads with a screwdriver and remove the plastic grey base.

Step 4



- Remove the screws indicated with a screw driver.

Step 5



- Remove the two screws behind the knob with a screwdriver.

Step 6 — Motor/Cord



- Use a regular nylon spudger to remove the plastic caps at these locations with moderate pressure.

- ⚠ When working with electronics, it's important to choose a tool that's ESD-safe to avoid accidental damage to the device. The regular black nylon spudger or a plastic opening tool should be used whenever possible.
- ⚠ Apply pressure at the edge of the plastic cap circles. Apply stress elsewhere may damage the device.

- ⓘ Note that the plastic caps are glued

Step 7



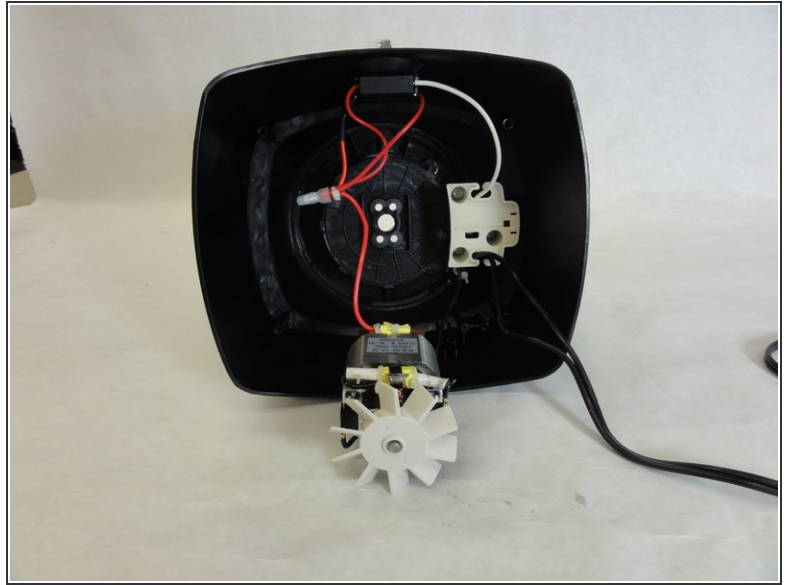
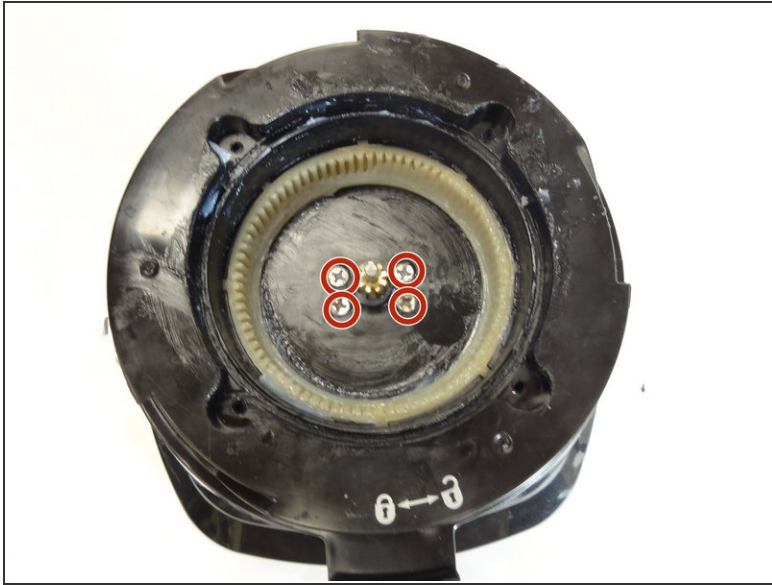
- Remove the 4 screws located under the plastic caps with a screw driver.

Step 8



- Lift and remove the plastic gears at the center of the device.
- Remove any grease residue underneath the plastic gears.

Step 9



- Remove the remaining screws to unhinge the motor located at the center of the device using a screw driver.

To reassemble your device, follow these instructions in reverse order.