



# Hand-Held Blender Motor Replacement

How to replace the motor of a hand-held blender.

Written By: Nina Rodenburg



## INTRODUCTION

The fix is needed when the motor is worn out and overheats when used. To replace the old motor for a new one a Philips screwdriver (2mm), Tri-head screwdriver (2mm) and a soldering iron are needed. Also, you will need a new motor.



### TOOLS:

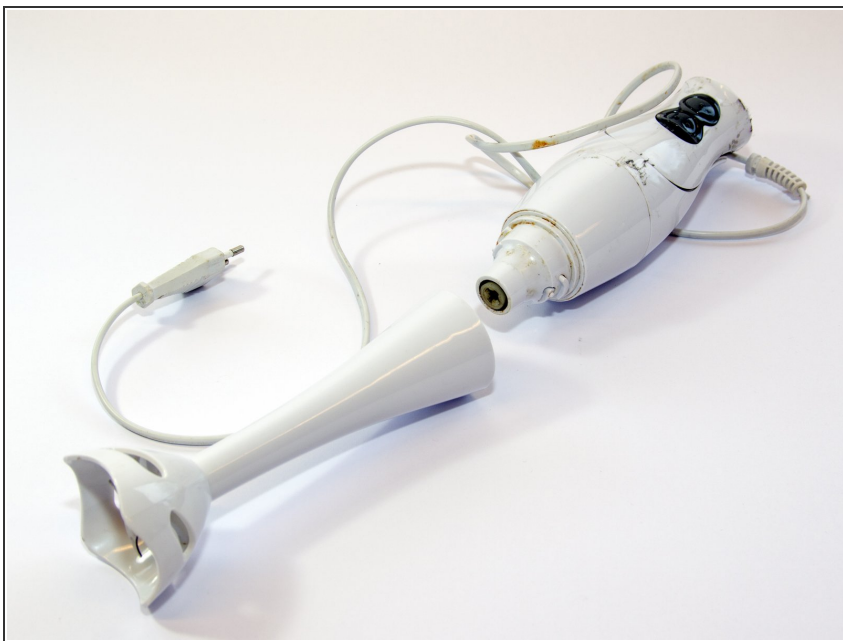
- [Tri-point Y2 Screwdriver](#) (1)
  - [Philips Head Screwdriver Size PH2](#) (1)
  - [Soldering Iron](#) (1)
  - [Spudger](#) (1)
-

## Step 1 — Motor



- Place the product on a clean and empty surface.

## Step 2



- Twist the attachment with the blades from the base of the blender.

### Step 3



- Unscrew the Tri-point screw (2mm) on the top to disassemble the top part of the casing.

### Step 4



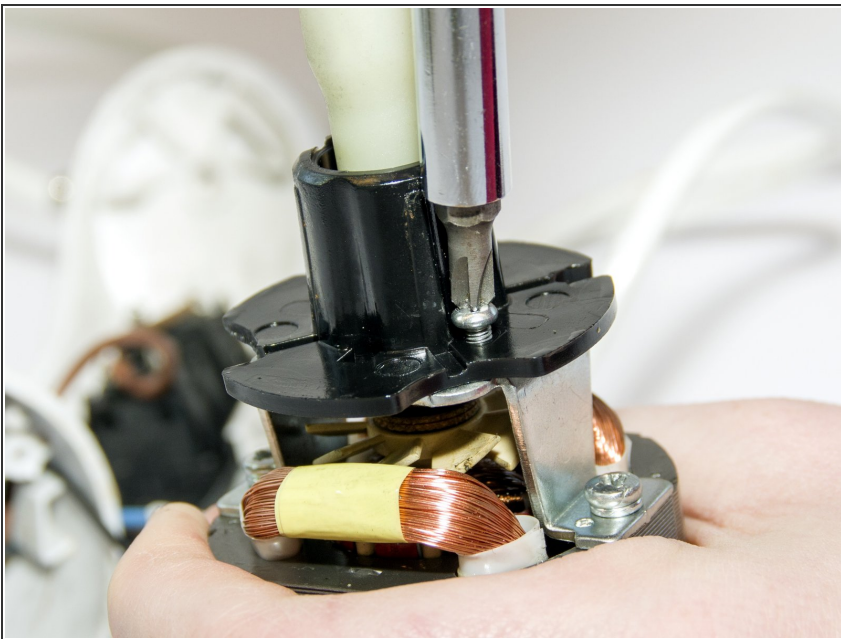
- Unscrew the Phillips (2mm) connecting the middle part of the casing with the bottom part.

## Step 5



- Use force to twist the middle part from the bottom part of the casing OR use spudgers to wiggle open the product.
- This reveals the motor.

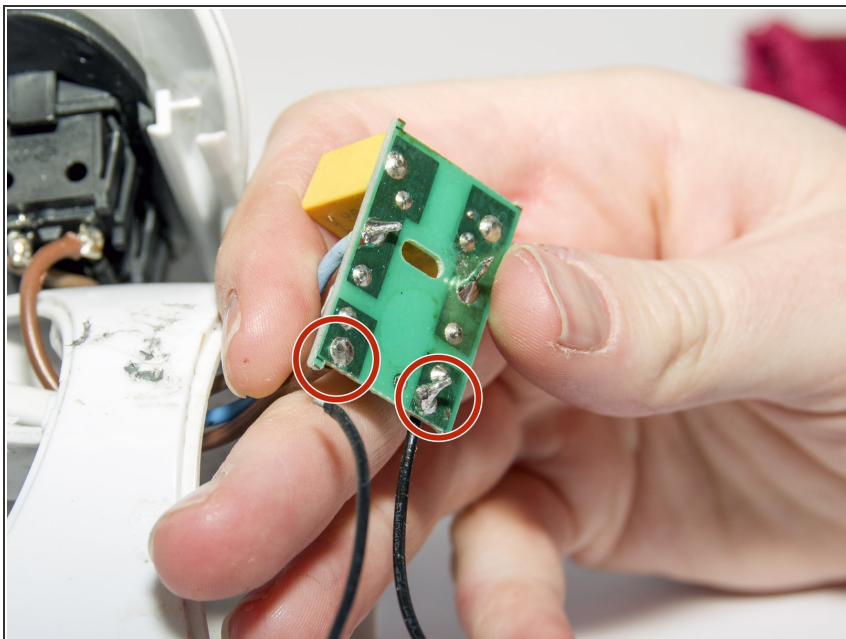
## Step 6



- Lift the motor out of the casing.
- Unscrew the Phillips (2mm) to disconnect the motor from the plastic part that transfers the motor rotations to the blade.



## Step 7



- With a soldering iron disconnect the wires coming from the motor from the PCB.
- ① Refer to this [How to Solder and Desolder Connections](#) guide to find more information on proper soldering techniques.

To reassemble your device, follow these instructions in reverse order.