



Hannspree Hannspad SN1AT71 Wi-Fi Card Replacement

Replace the wi-fi card in the Hannspree Hannspad SN1AT71.

Written By: matthew vandeventer



INTRODUCTION

The Wi-Fi card provides a wireless connection to a network. If it fails, you may be left with no other option to connect the tablet to the internet.

TOOLS:

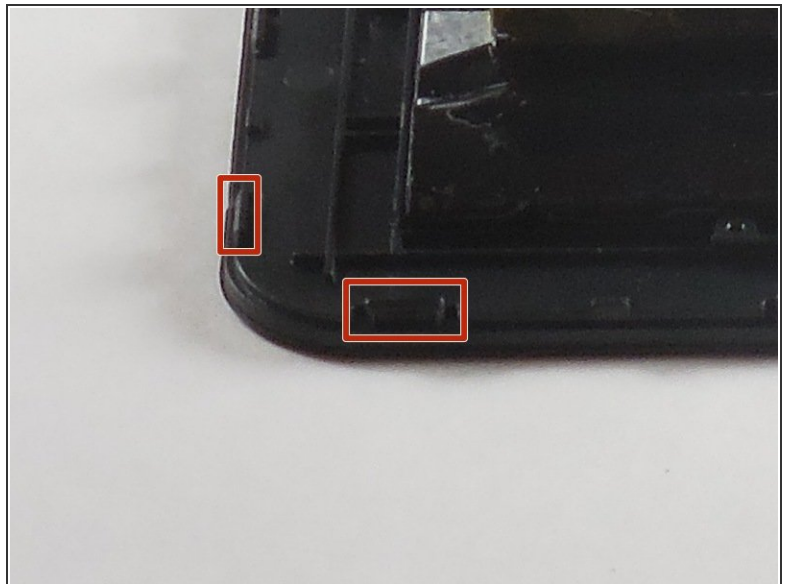
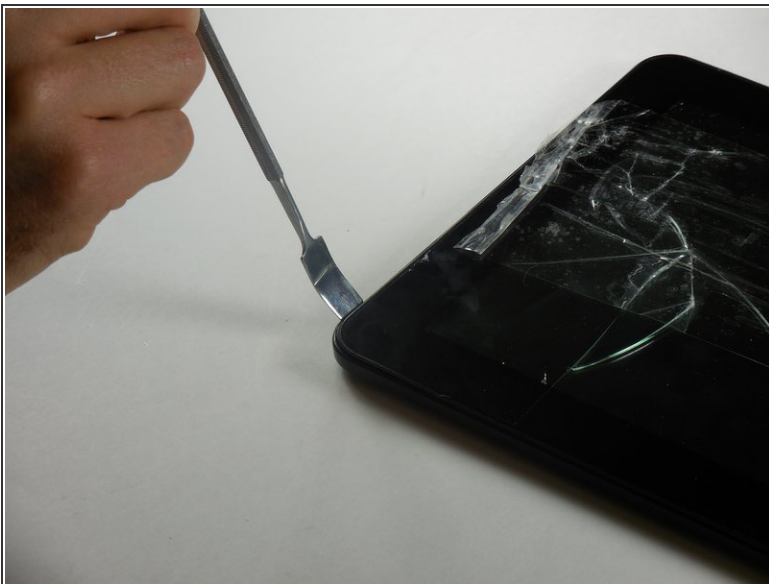
- [Metal Spudger](#) (1)
 - [iFixit Opening Tools](#) (1)
 - [Tweezers](#) (1)
 - [Soldering Workstation](#) (1)
-

Step 1 — Back Panel



- Turn off the device.
 - Place the tablet screen side up.
- ⚠ Make sure the device is turned off to avoid damage.

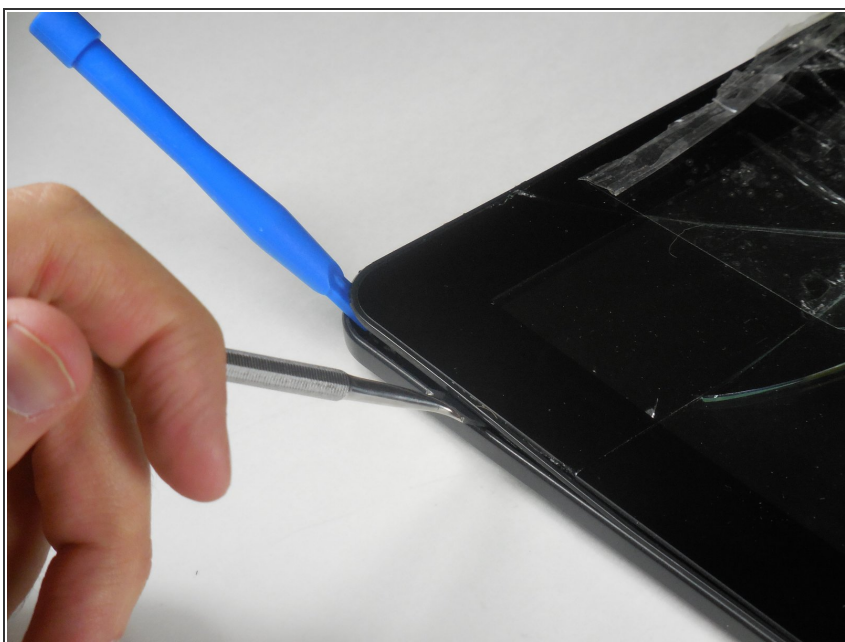
Step 2



- Use the metal spudger to press an opening between the screen and back cover.
- Plastic tabs are located on each corner of the back cover.

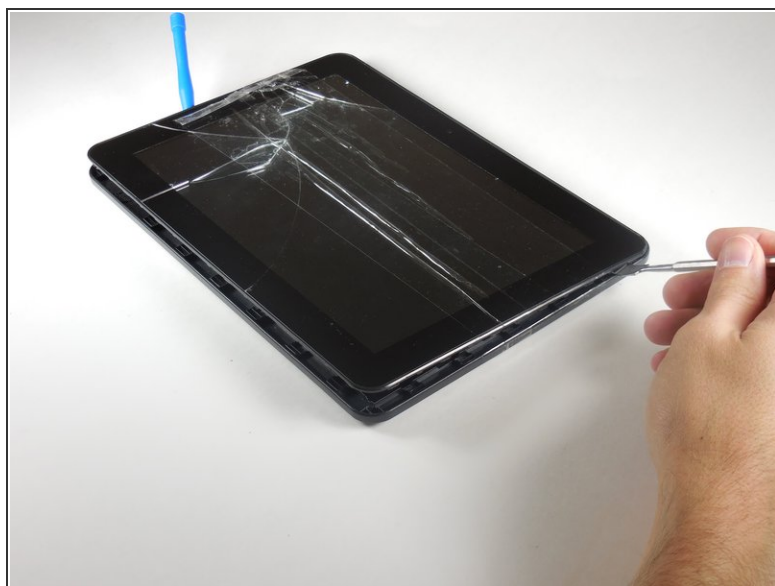
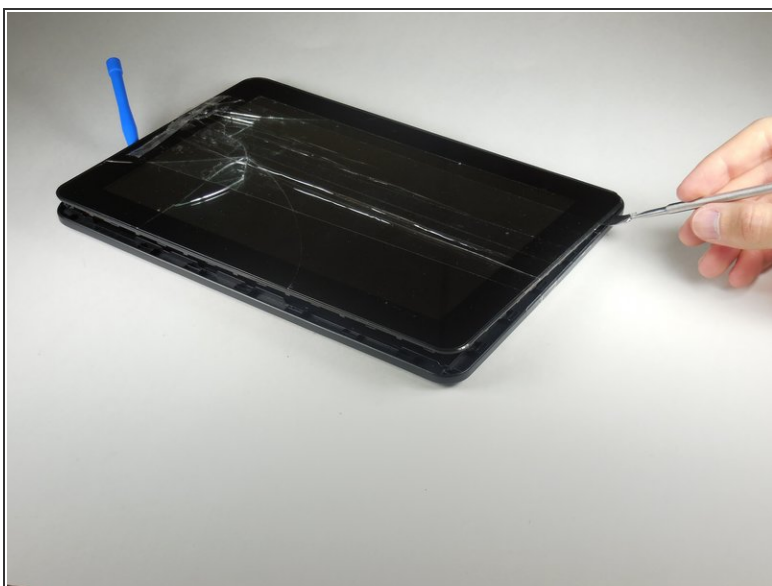
⚠ Be careful, as the plastic tabs are delicate.

Step 3



- Wedge the plastic opening tool between the screen and the back panel to keep tension constant.

Step 4



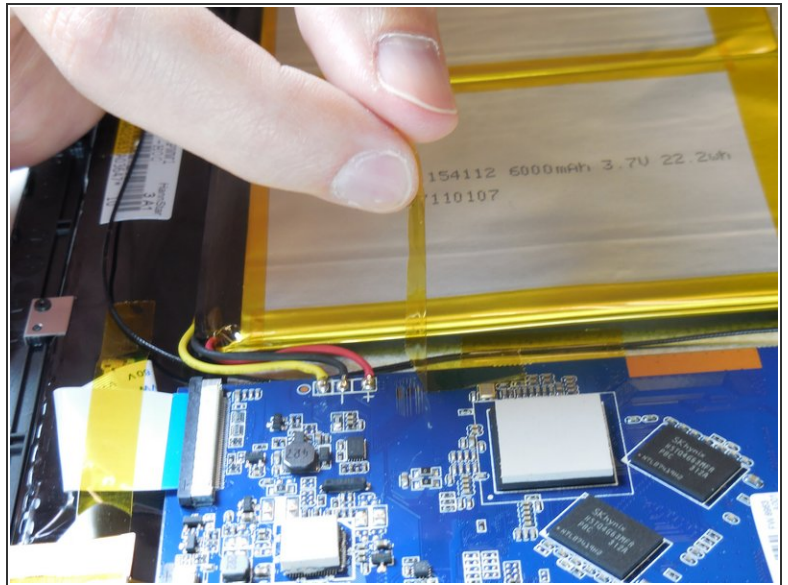
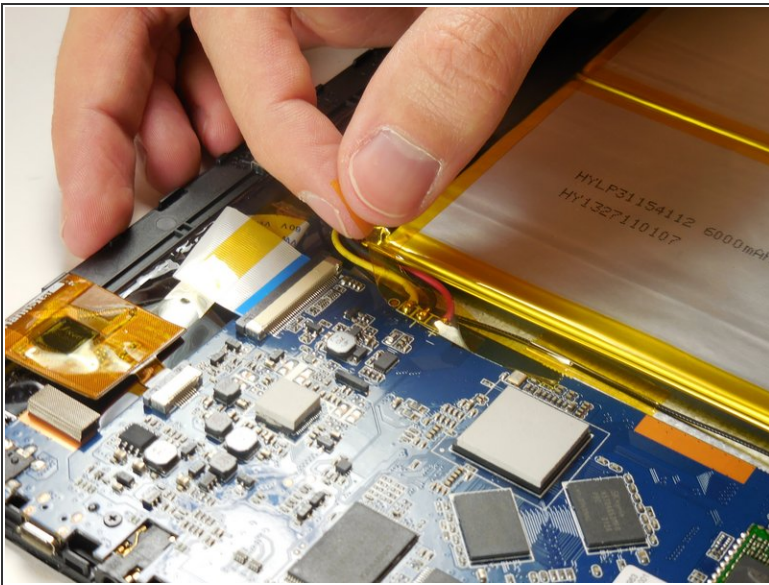
- Slide the metal spudger around the casing to separate it from the inside of the tablet.

Step 5



- Flip the tablet over so the screen side is down after all the tabs are separated.
- Remove the back panel by delicately lifting it straight up.


Step 6 — Battery




- Remove the adhesive tape from the power connection cables.


Step 7



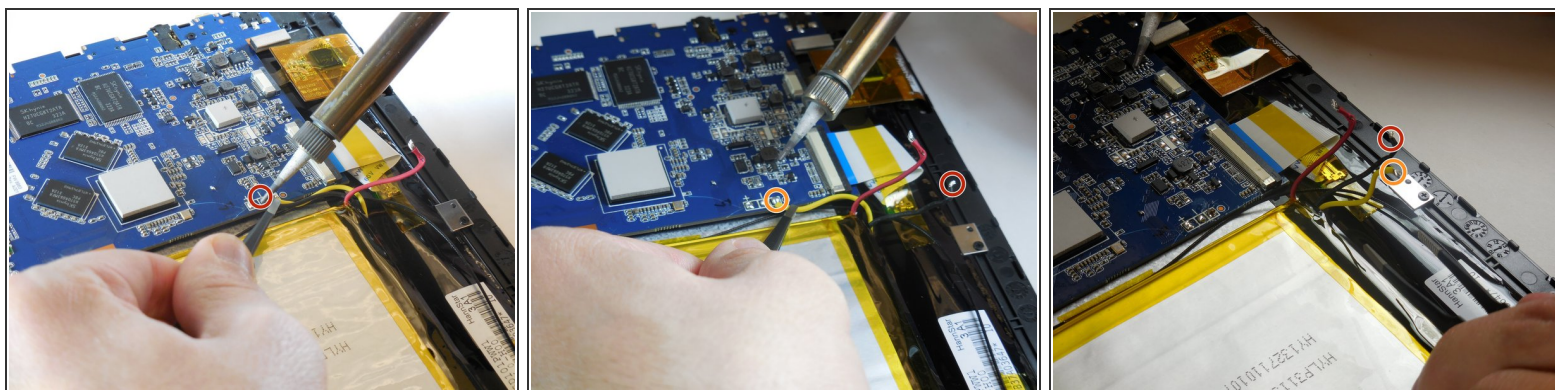
 Instructions for desoldering can be found on the [iFixit website](https://www.ifixit.com/Manual/Disassembly/Desoldering).

 The soldering iron is hot. It can burn you and it can cause damage to the wires and motherboard.

- Grab hold of the red wire using the tweezers.
- Desolder the red wire connection from the motherboard using the tip of the soldering iron.
- Move the wire connection away from the motherboard.

 Do not let the red wire connection touch other wires or the motherboard.

Step 8



- Desolder the black wire connection from the motherboard by following the previous step.
 - Desolder the yellow wire connection from the motherboard by following the previous step.
- ⚠ When moving the wire connections, do not let the red wire connection touch other wires or the motherboard.

Step 9



- Insert the flat end of the nylon spudger between the battery and the case.
- The battery is attached to the tablet with an adhesive tape, but should slowly come free.

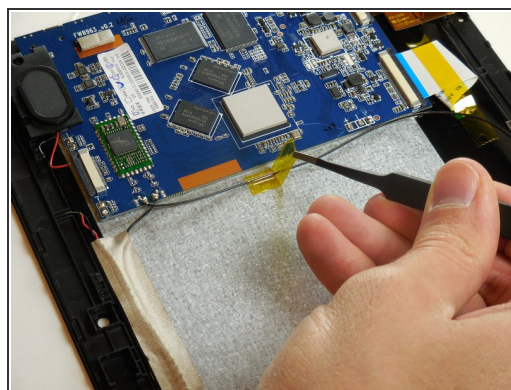
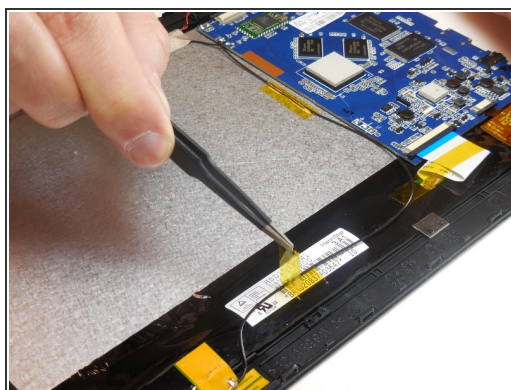
⚠ Be careful to not puncture or bend the battery during its removal. If your battery is swollen, [take appropriate precautions](#).

Step 10 — Wi-Fi Card Replacement



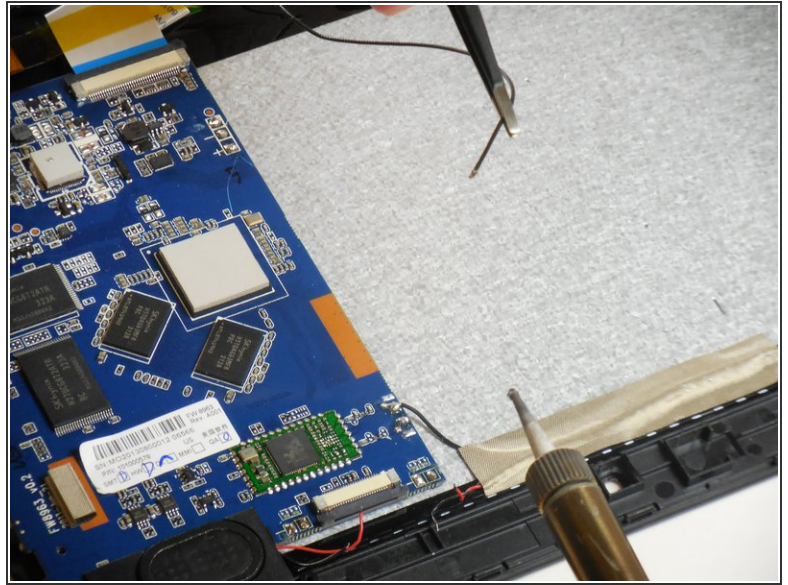
- Identify the card and its connection to the motherboard.
- The card itself.
- The area where the card connects to the motherboard.

Step 11



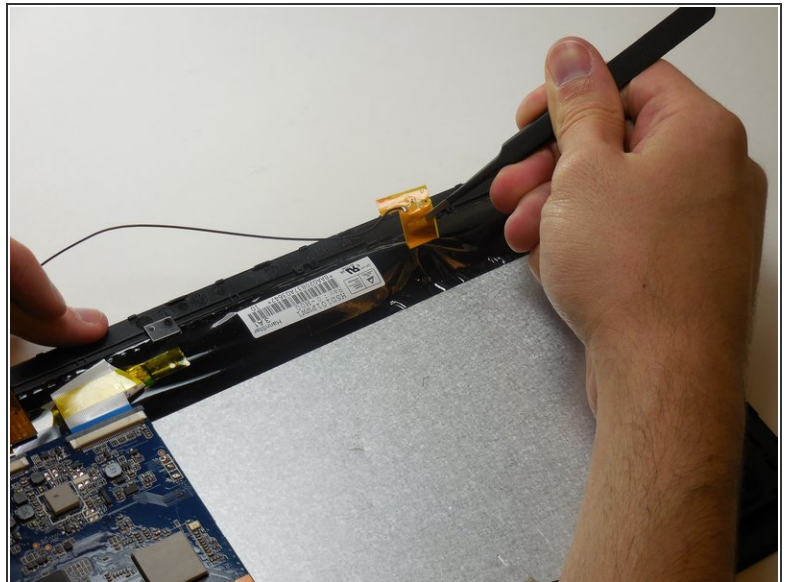
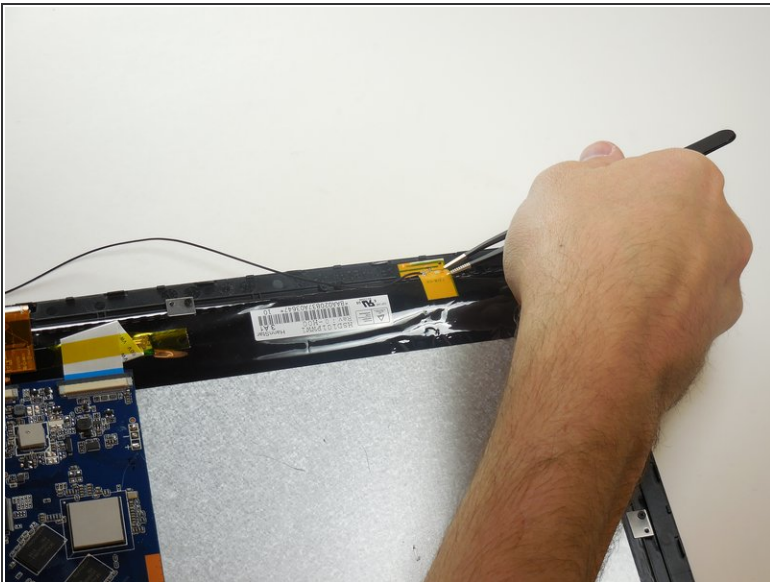
- Peel off the adhesive tape holding the wires down.

Step 12



- Desolder the wire.

Step 13



- Use the tweezers to peel the Wi-Fi card off.

To reassemble your device, follow these instructions in reverse order.