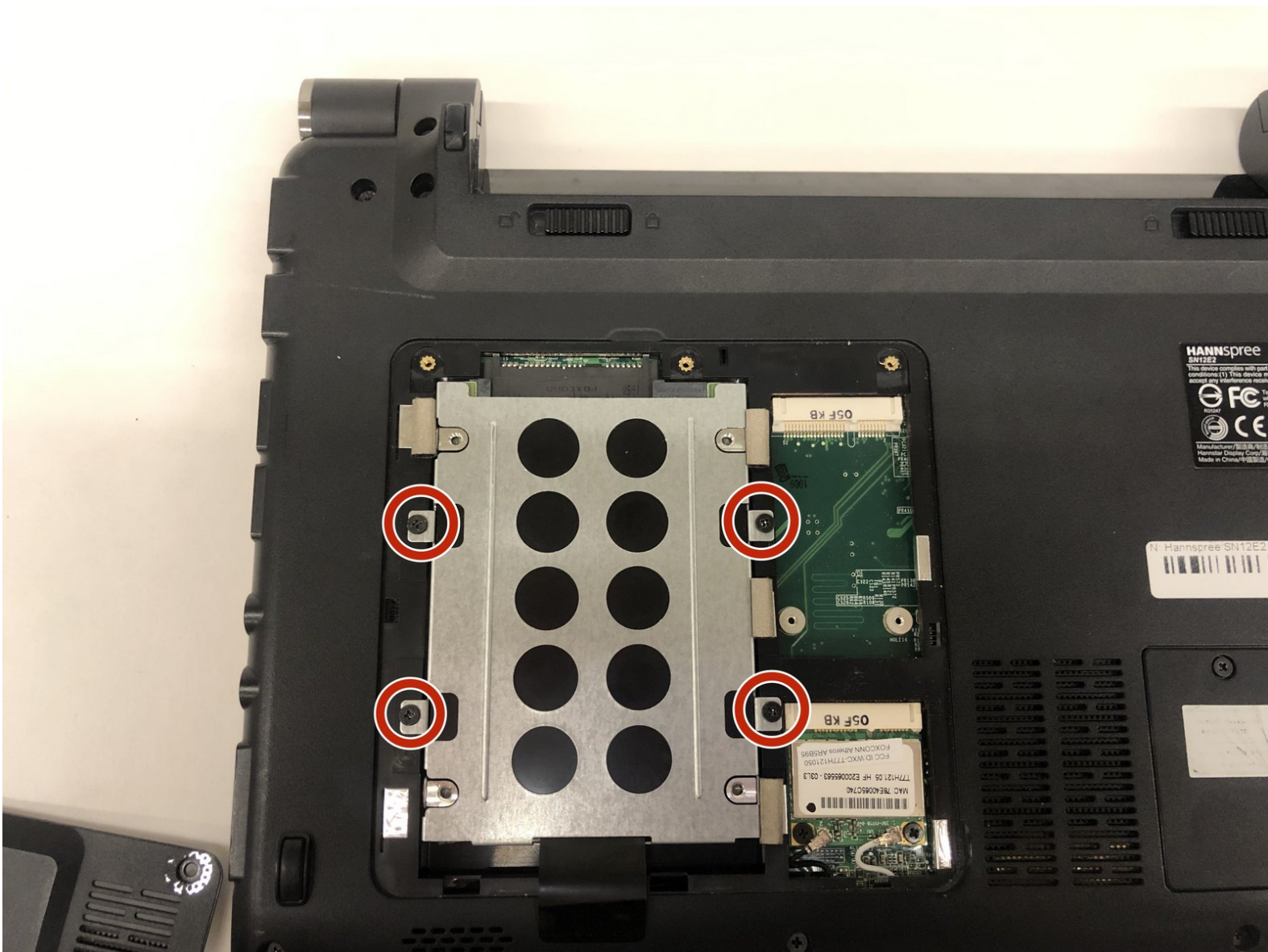




# Hannspree SN12E2 Hard Drive Replacement

This guide will show you how to remove the hard drive from your Hannspree SN12E2.

Written By: Kyle Duby



---

## INTRODUCTION

Is your device loading files slowly or the files are corrupted? Use this guide to remove and replace the hard drive in your laptop.



### TOOLS:

- [Phillips #0 Screwdriver](#) (1)
-

## Step 1 — Battery



- Unplug and power off your laptop.

## Step 2



- Close your laptop .
- Place your laptop face down on a flat surface.

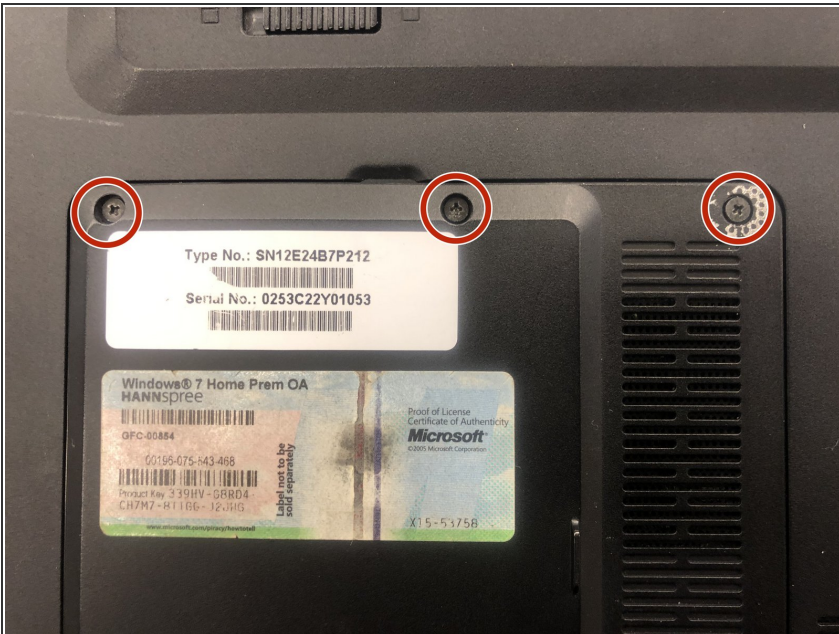


## Step 3



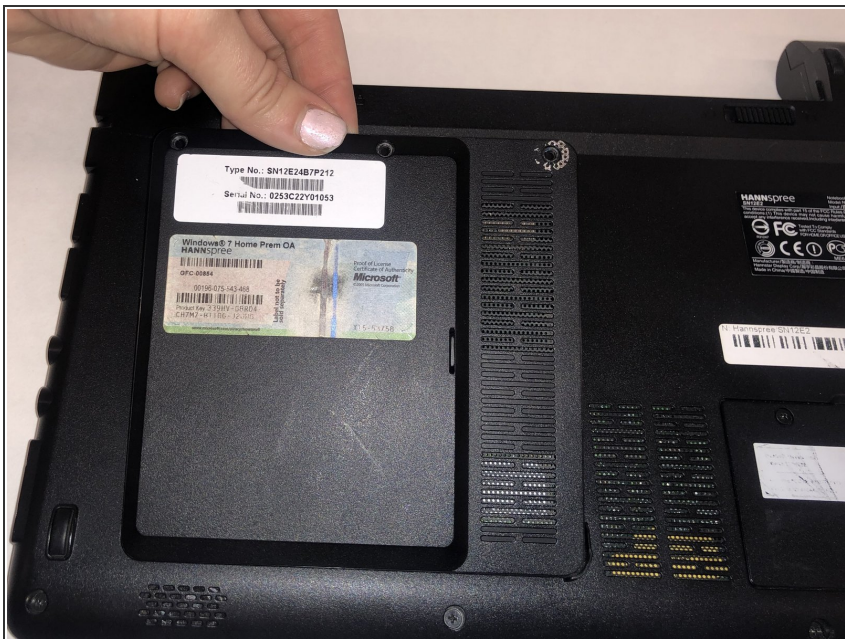
- Unlatch the lock on the top right of your laptop first.
- You will need to pull on the lock on the left side and remove the battery at the same time
- The left lock is a spring lock and needs constant pressure applied in order to stay open.

## Step 4 — Hard Drive Access Door



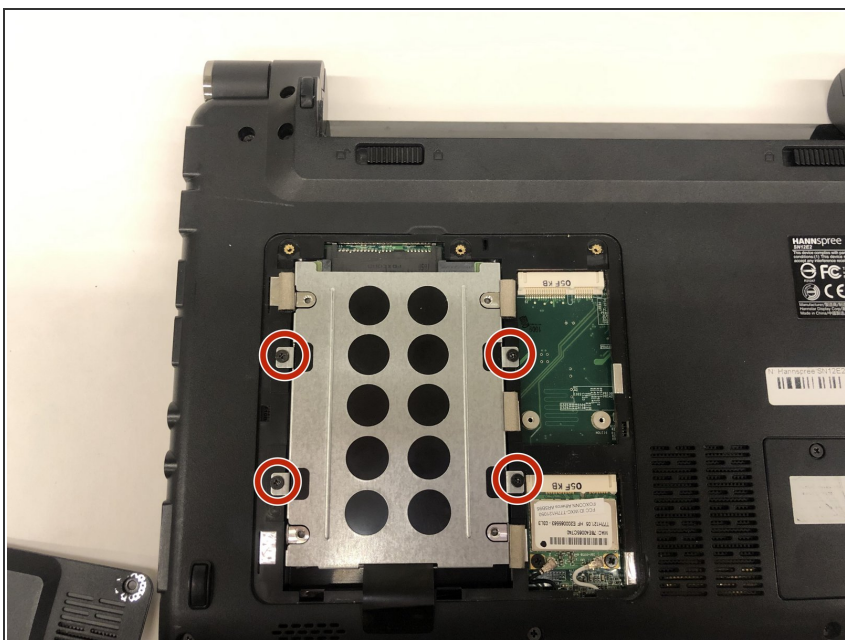
- Remove the three 3mm Phillips #0 screws.

## Step 5



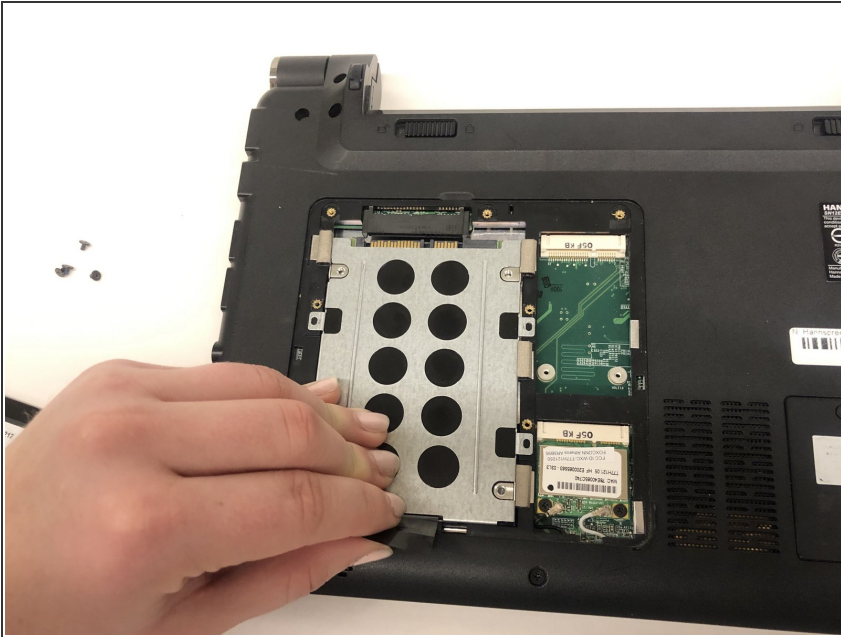
- Gently pull on the access panel to remove it.

## Step 6 — Hard Drive



- Remove the four 4mm Phillips #0 retaining screws.
- ⓘ The hard drive caddy is the large piece of metal with black circles.

## Step 7



- Next, lift up the hard drive and pull towards you. Lift up the end of the hard drive that is not plugged into the computer.

## Step 8



- Slide your hard drive out of the metal piece by unscrewing the sides.

To reassemble your device, follow these instructions in reverse order.