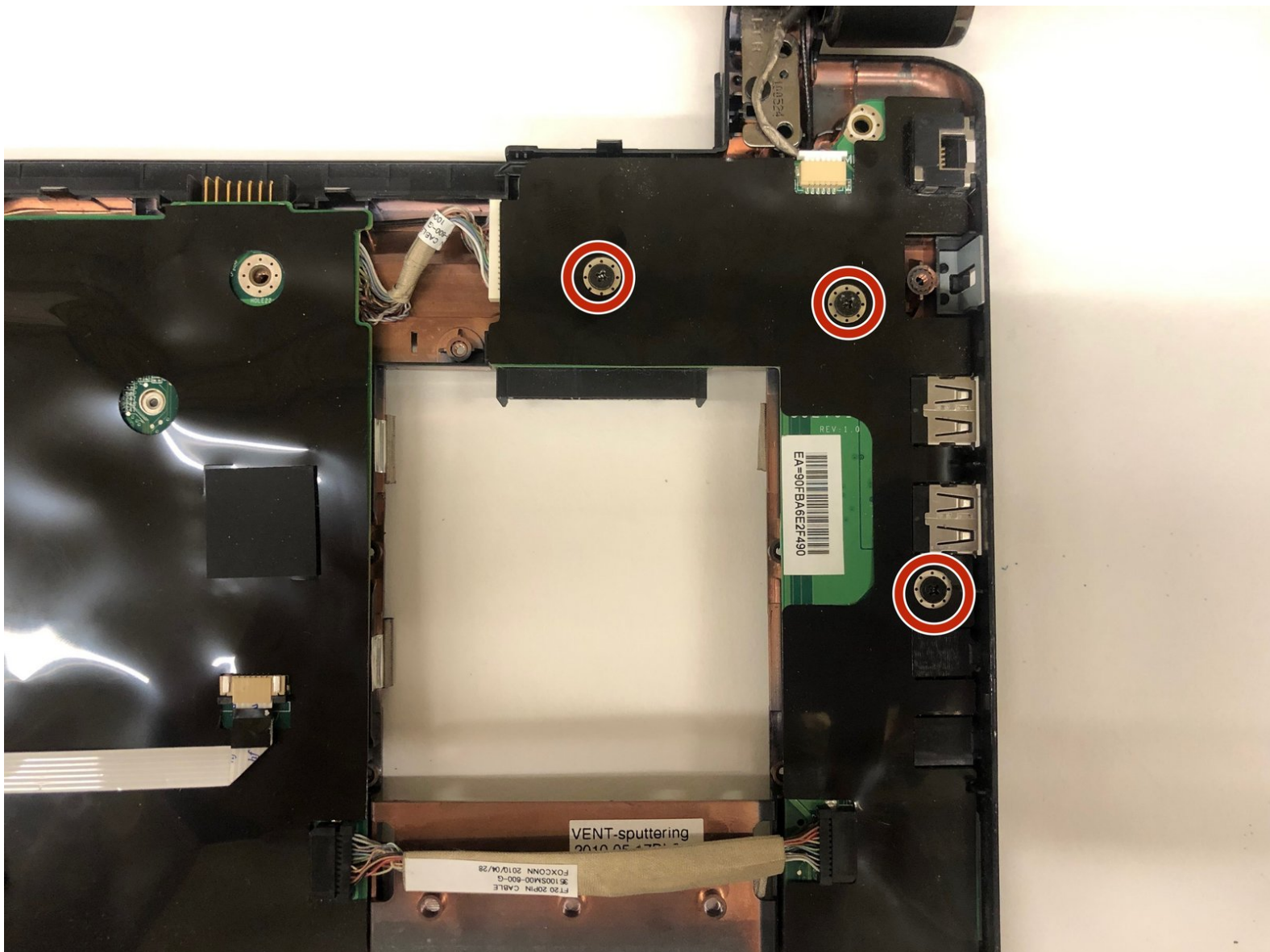




# Hannspree SN12E2 IO Board Replacement

This guide will show you how to replace the IO board in your Hannspree SN12E2.

Written By: jacob





## TOOLS:

- [iFixit Opening Tools](#) (1)
- [Phillips #0 Screwdriver](#) (1)

## Step 1 — Battery



- Unplug and power off your laptop.

## Step 2



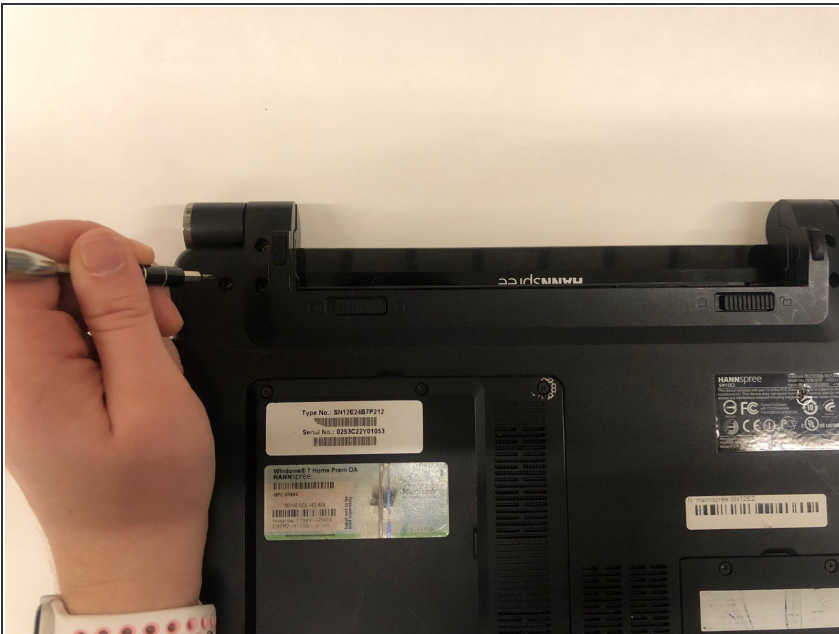
- Close your laptop .
- Place your laptop face down on a flat surface.

### Step 3



- Unlatch the lock on the top right of your laptop first.
- You will need to pull on the lock on the left side and remove the battery at the same time
- The left lock is a spring lock and needs constant pressure applied in order to stay open.

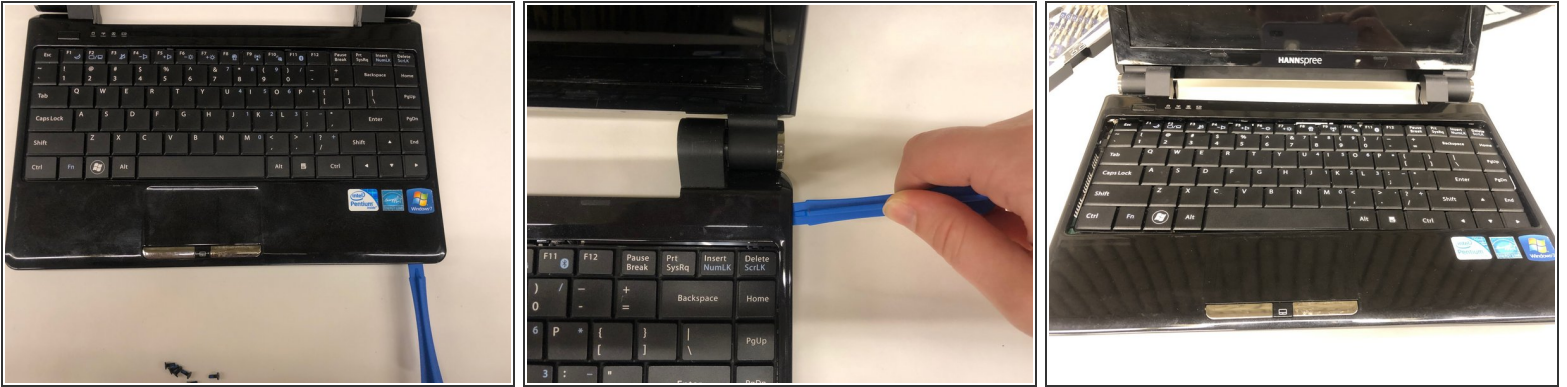
### Step 4 — Touchpad Plane/Keyboard



- Remove all the 5mm PH0 screws on the back cover



## Step 5



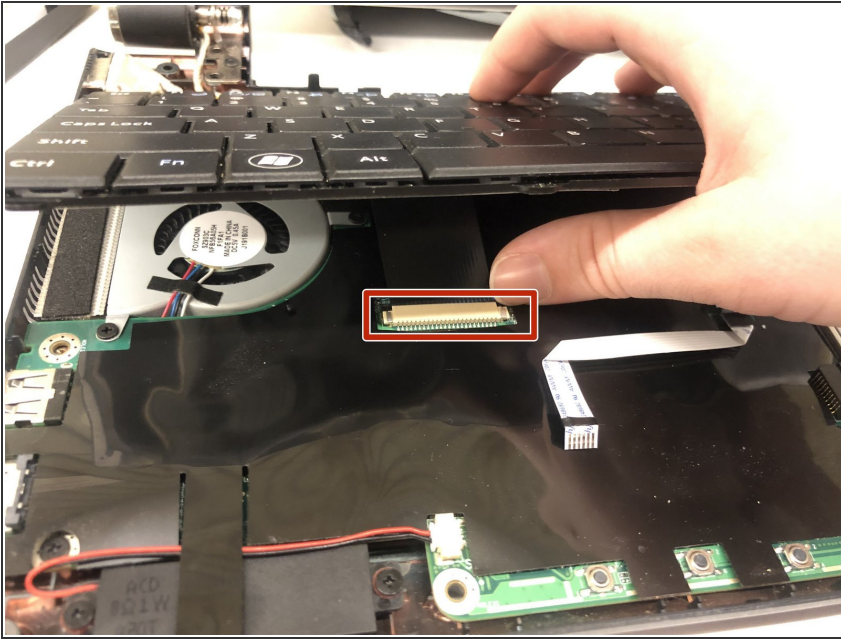
- Gently pry the case apart starting at the lower right corner using the small spudger
- Move around the case gently prying until the touchpad plane is free from the rest of the case

## Step 6



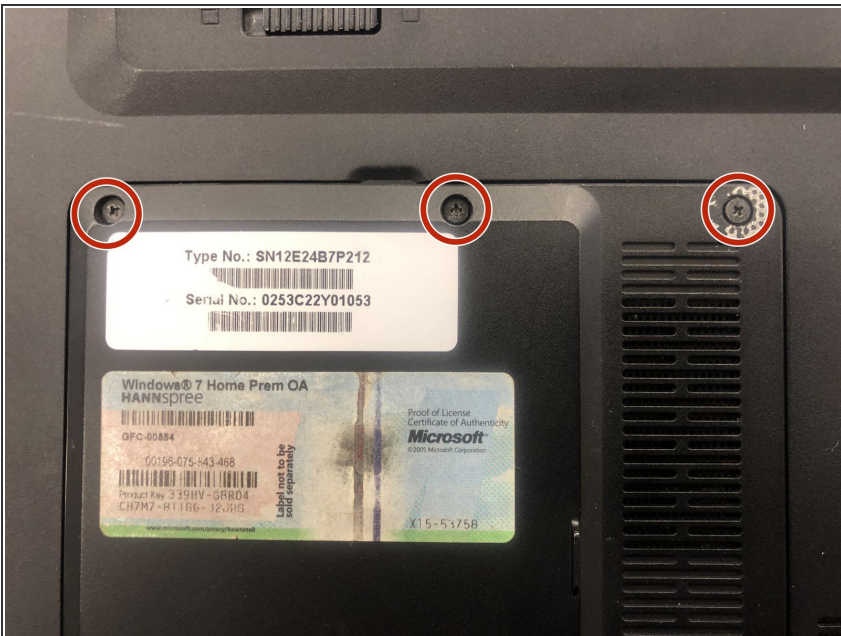
- Gently lift up on the touchpad portion of the touchpad plane
- Unplug the ZIFF connector by pulling gently on the black retaining blade and removing the white flat flex cable
- Pull the touchpad away from the rest of the case

## Step 7



- Gently lift up on the loose keyboard to expose the ZIFF connector.
- Unplug the keyboard ZIFF following the same instructions as the touchpad ZIFF

## Step 8 — Hard Drive Access Door



- Remove the three 3mm Phillips #0 screws.

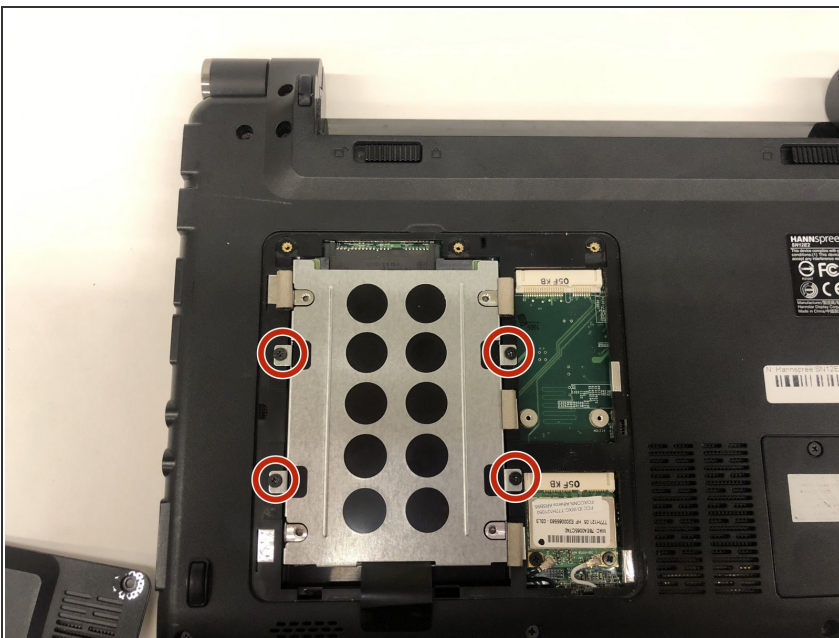


## Step 9



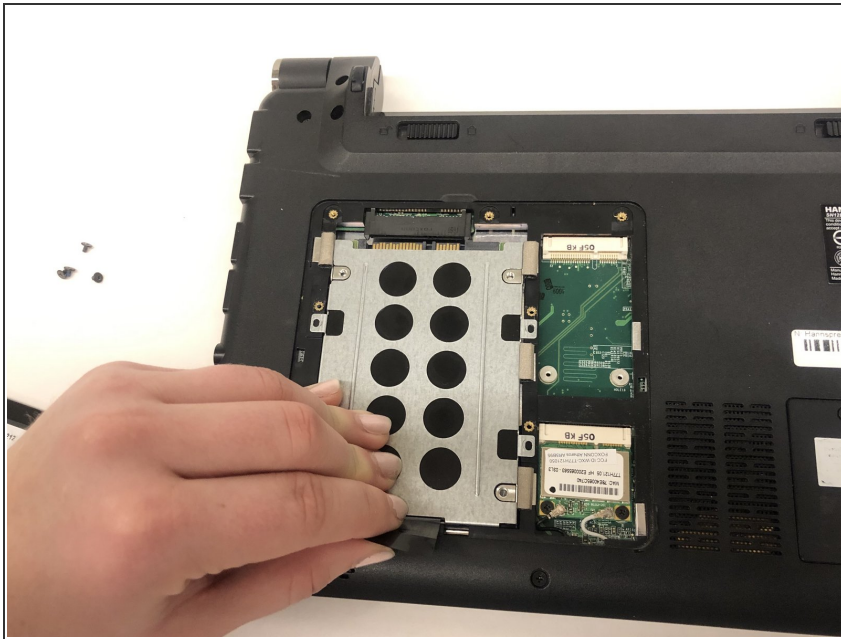
- Gently pull on the access panel to remove it.

## Step 10 — Hard Drive



- Remove the four 4mm Phillips #0 retaining screws.
- ⓘ The hard drive caddy is the large piece of metal with black circles.

## Step 11



- Next, lift up the hard drive and pull towards you. Lift up the end of the hard drive that is not plugged into the computer.

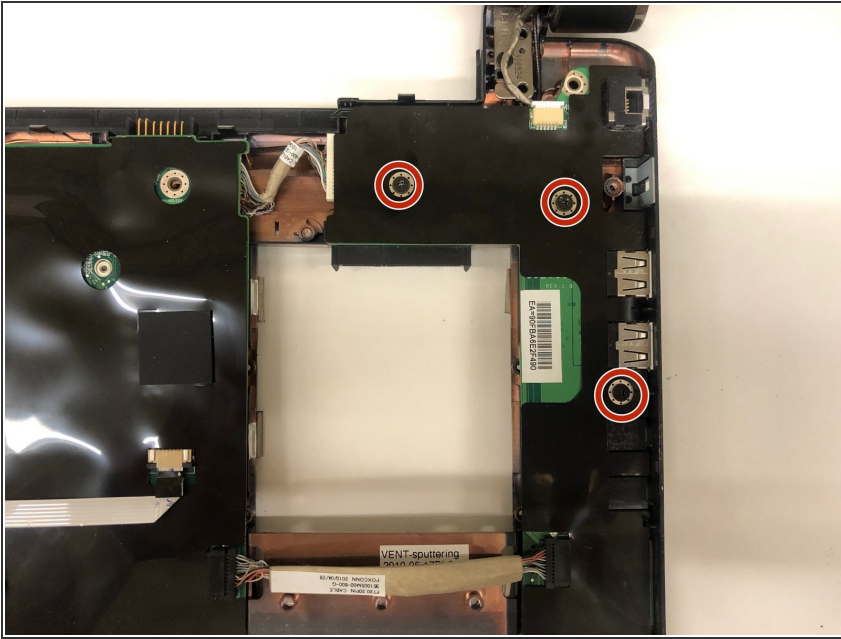
## Step 12



- Slide your hard drive out of the metal piece by unscrewing the sides.

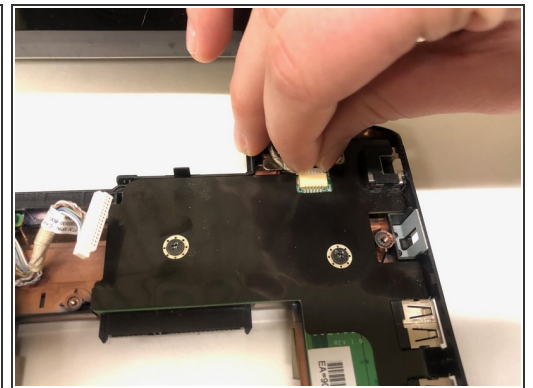
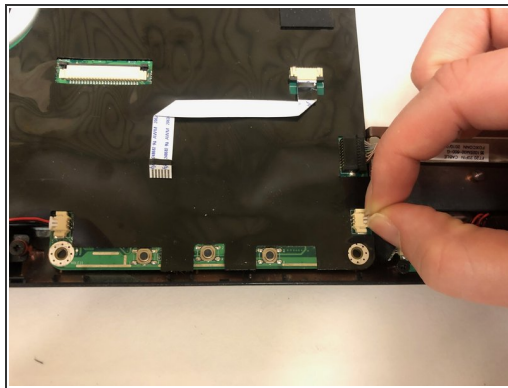
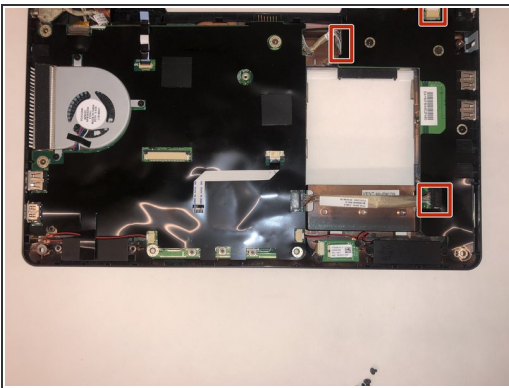


## Step 13 — IO Board



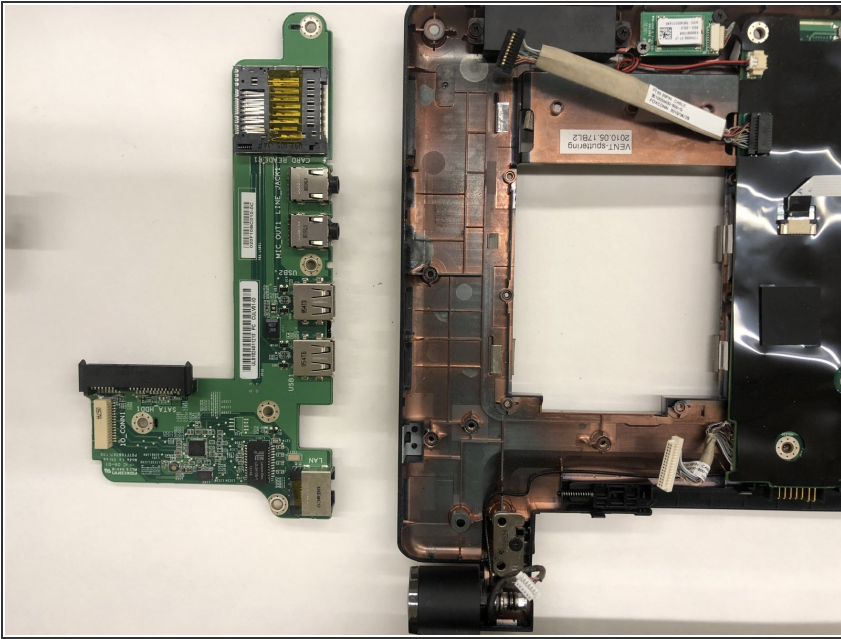
- Remove the three 3mm PH0 screws holding the IO board to the case.

## Step 14



- Unplug the three JST connectors connecting the IO board to the motherboard.
- For each connector, remove by gently pulling parallel to the connector housing until the connector becomes undone
- ☑ When replacing the connectors ensure that they are oriented correctly. The housing is keyed to prevent the connectors from being plugged in backwards.

## Step 15



- Remove IO Board by gently tilting it toward the outer edge of the case.

To reassemble your device, follow these instructions in reverse order.