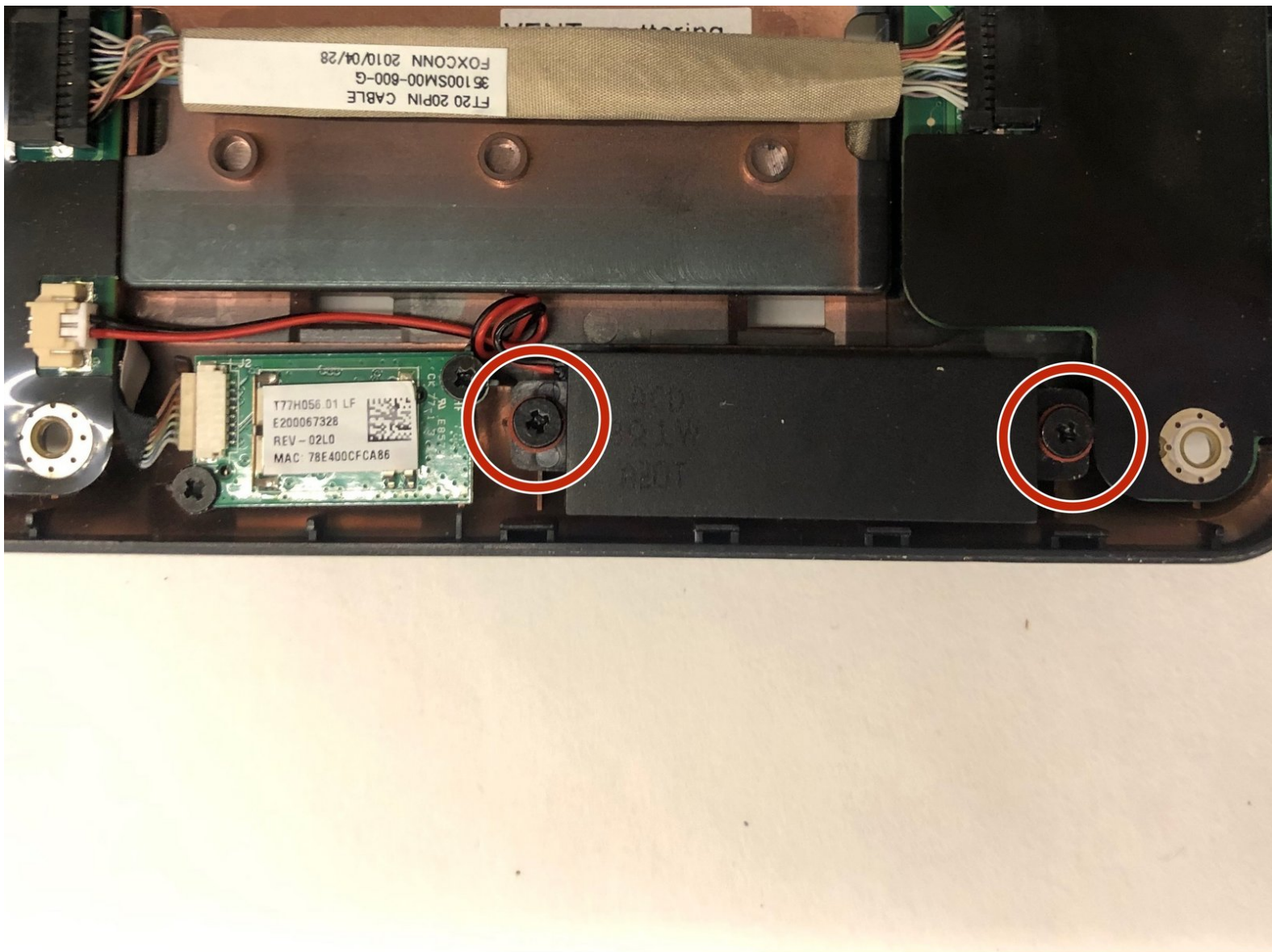




Hannspree SN12E2 Speaker Replacement

Replacing the speaker for the Hannspree SN12E2.

Written By: Tim Chase



INTRODUCTION

This guide will show you how to remove and replace the Speaker in the Hannspree SN12E2 laptop. Speakers are used to produce sound for your device if your device is not producing sound or if the sound is static or peaking this may be the solution.



TOOLS:

- [Phillips #0 Screwdriver](#) (1)
 - [iFixit Opening Tools](#) (1)
-

Step 1 — Battery



- Unplug and power off your laptop.

Step 2



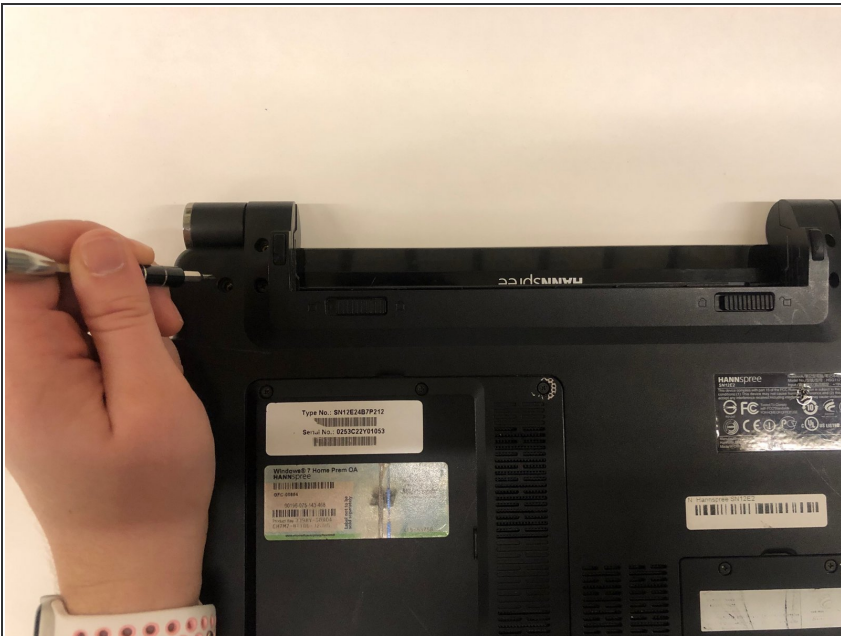
- Close your laptop .
- Place your laptop face down on a flat surface.

Step 3



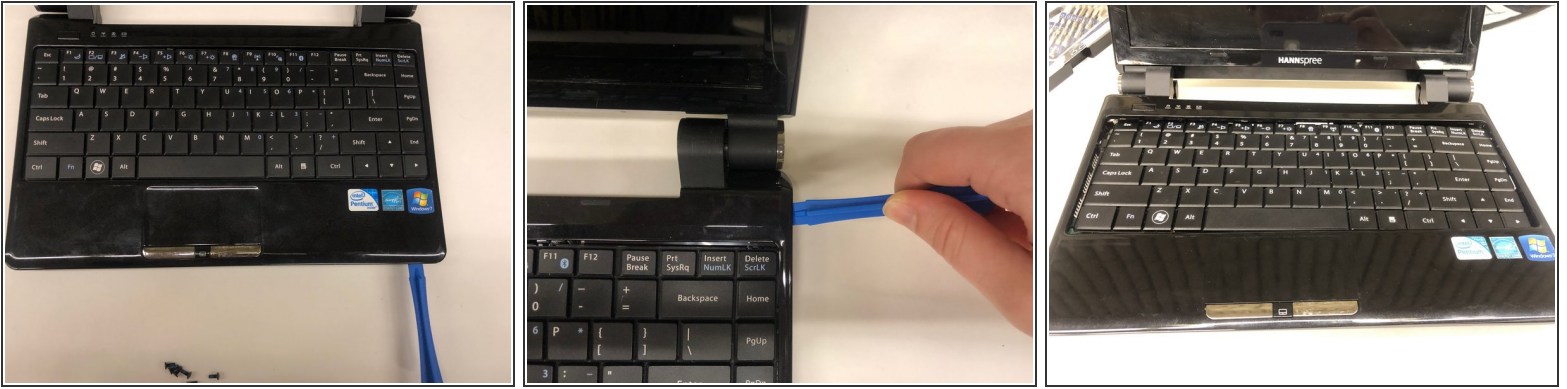
- Unlatch the lock on the top right of your laptop first.
- You will need to pull on the lock on the left side and remove the battery at the same time
- The left lock is a spring lock and needs constant pressure applied in order to stay open.

Step 4 — Touchpad Plane/Keyboard



- Remove all the 5mm PH0 screws on the back cover

Step 5



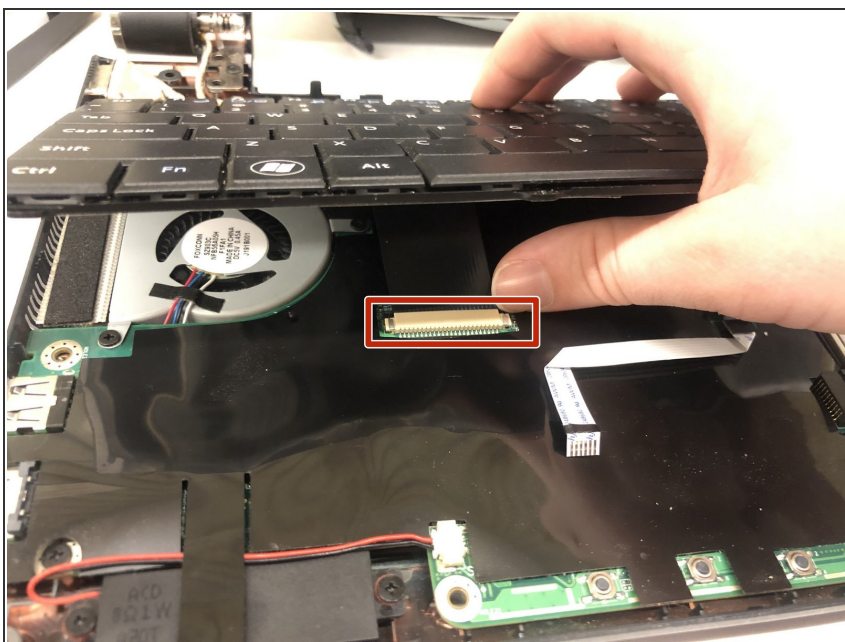
- Gently pry the case apart starting at the lower right corner using the small spudger
- Move around the case gently prying until the touchpad plane is free from the rest of the case

Step 6



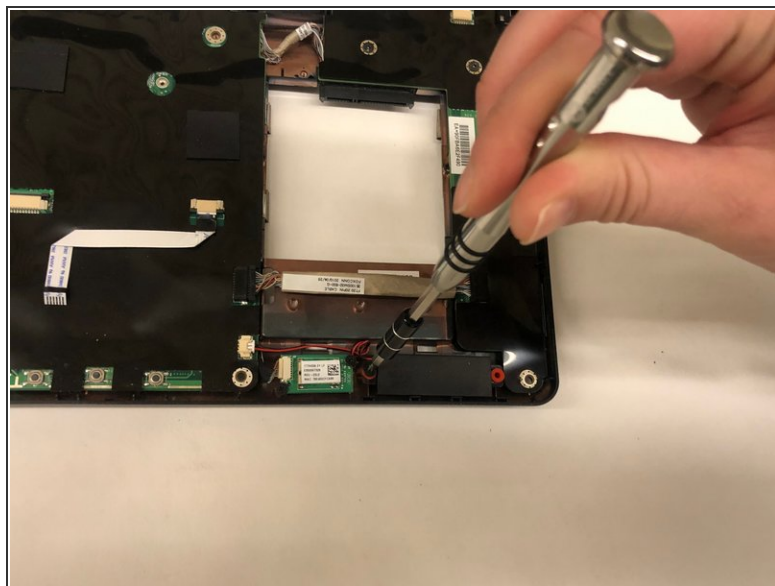
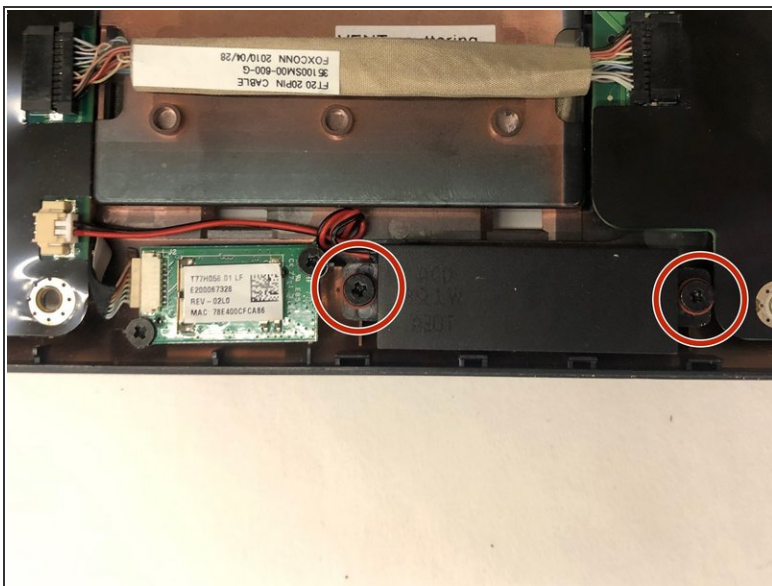
- Gently lift up on the touchpad portion of the touchpad plane
- Unplug the ZIFF connector by pulling gently on the black retaining blade and removing the white flat flex cable
- Pull the touchpad away from the rest of the case

Step 7



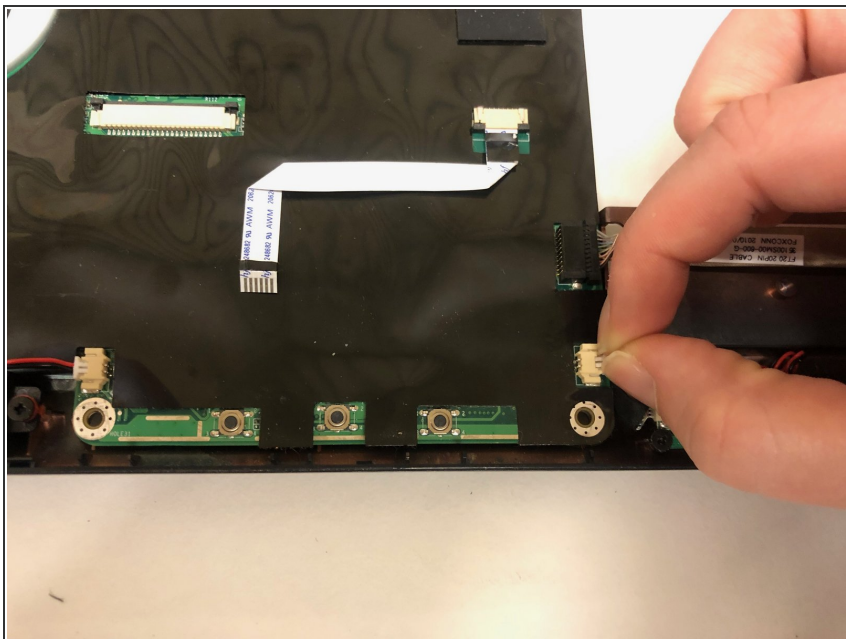
- Gently lift up on the loose keyboard to expose the ZIFF connector.
- Unplug the keyboard ZIFF following the same instructions as the touchpad ZIFF

Step 8 — Speaker



- Remove the two screws on the speakers.

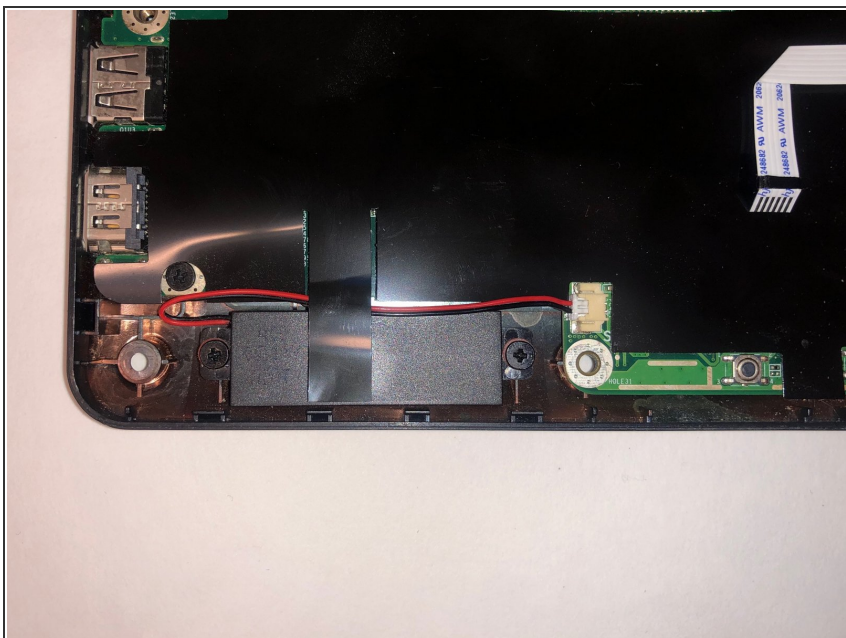
Step 9



- Gently remove the JST connector by pulling parallel to the housing .

- ☑ When replacing the connectors ensure that they are oriented correctly. The housing is keyed to prevent the connectors from being plugged in backwards.

Step 10



- Repeat same steps for other speaker if necessary.

To reassemble your device, follow these instructions in reverse order.