



Hannspree SN12E2 Touchpad Plane/Keyboard Replacement

This guide will show you how to replace a keyboard or touch plane on the Hannspree SN12E2.

Written By: Tim Chase





TOOLS:

- [Phillips #0 Screwdriver](#) (1)
- [iFixit Opening Tools](#) (1)

Step 1 — Battery



- Unplug and power off your laptop.

Step 2



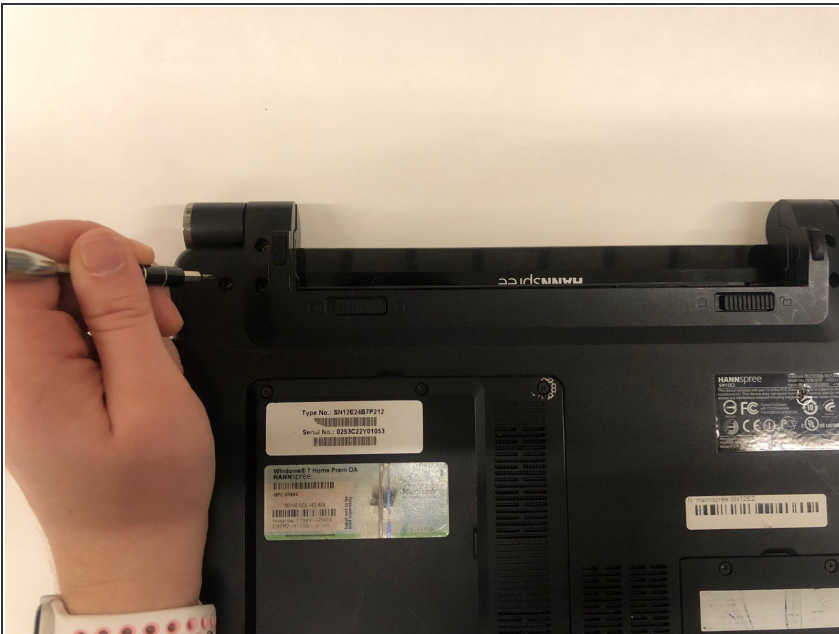
- Close your laptop .
- Place your laptop face down on a flat surface.

Step 3



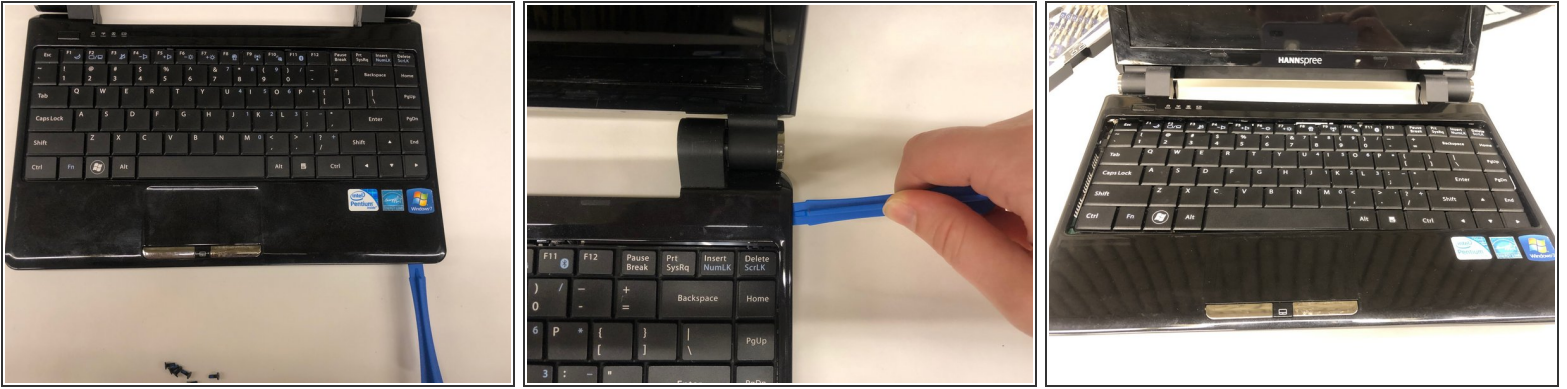
- Unlatch the lock on the top right of your laptop first.
- You will need to pull on the lock on the left side and remove the battery at the same time
- The left lock is a spring lock and needs constant pressure applied in order to stay open.

Step 4 — Touchpad Plane/Keyboard



- Remove all the 5mm PH0 screws on the back cover

Step 5



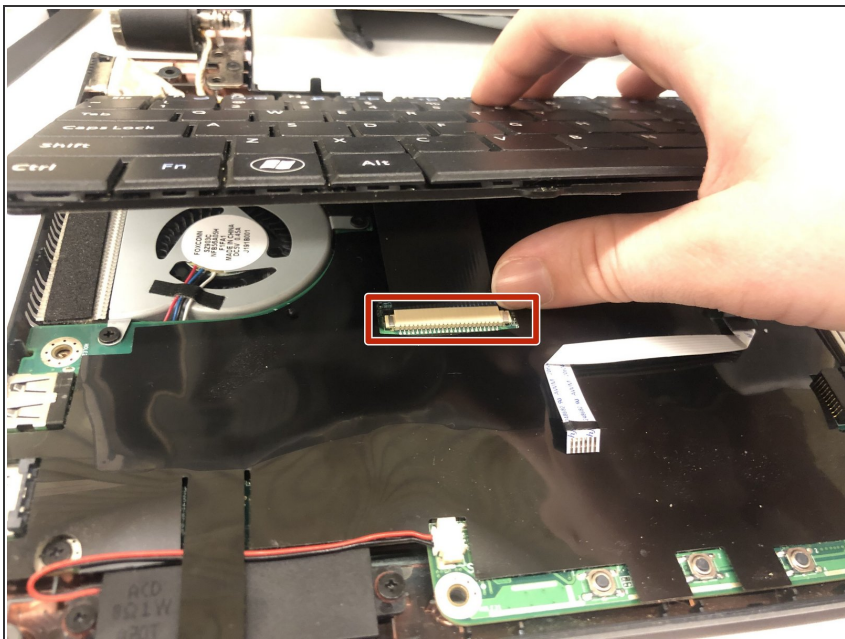
- Gently pry the case apart starting at the lower right corner using the small spudger
- Move around the case gently prying until the touchpad plane is free from the rest of the case

Step 6



- Gently lift up on the touchpad portion of the touchpad plane
- Unplug the ZIFF connector by pulling gently on the black retaining blade and removing the white flat flex cable
- Pull the touchpad away from the rest of the case

Step 7



- Gently lift up on the loose keyboard to expose the ZIFF connector.
- Unplug the keyboard ZIFF following the same instructions as the touchpad ZIFF

To reassemble your device, follow these instructions in reverse order.