



Hannspree SN12E2 Wifi Card Replacement

This guide will show you how to find and replace the Wifi Card in the Hannspree SN12E2.

Written By: Kyle Duby



INTRODUCTION

In this guide, you will learn how to find and replace your Wifi card. This solution may be more time consuming and difficult than simply buying a USB wifi adapter and using that instead.



TOOLS:

- [Phillips #0 Screwdriver](#) (1)
-

Step 1 — Battery



- Unplug and power off your laptop.

Step 2



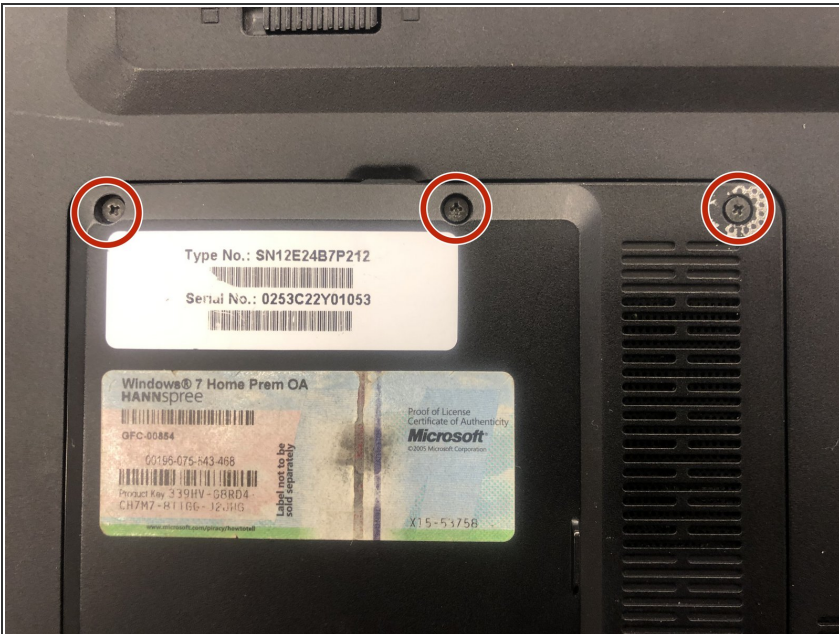
- Close your laptop .
- Place your laptop face down on a flat surface.

Step 3



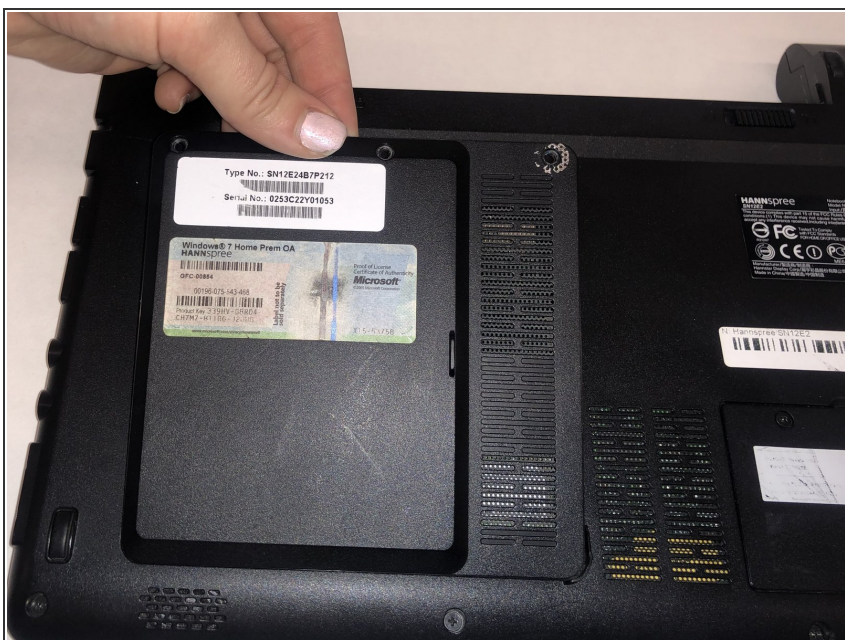
- Unlatch the lock on the top right of your laptop first.
- You will need to pull on the lock on the left side and remove the battery at the same time
- The left lock is a spring lock and needs constant pressure applied in order to stay open.

Step 4 — Hard Drive Access Door



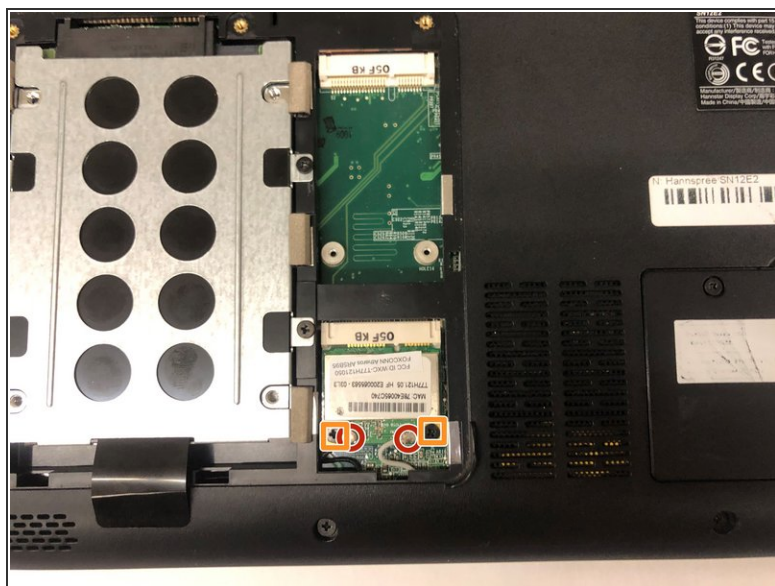
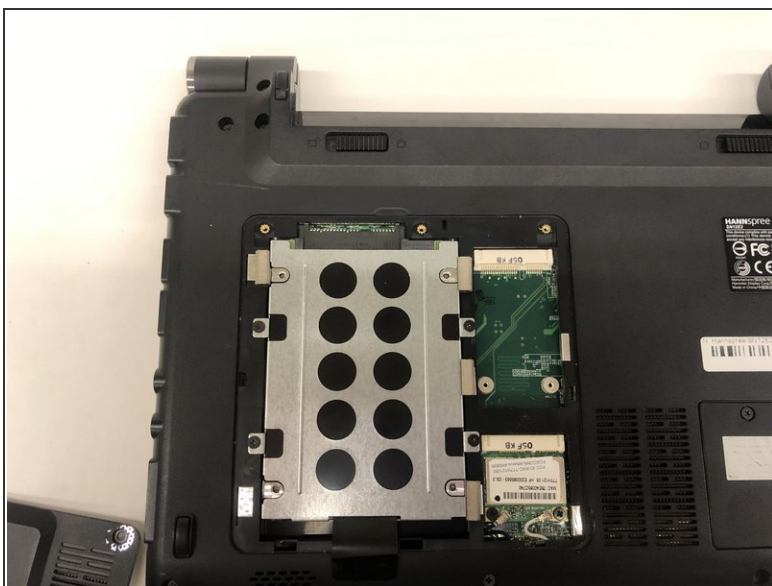
- Remove the three 3mm Phillips #0 screws.

Step 5



- Gently pull on the access panel to remove it.

Step 6 — Wifi Card



- Locate the Wifi Card in the bottom right of the hard drive access panel.
- Remove the two antenna plugged into the the Wifi Card.
- Remove the two 3.6mm PH0 screws.

Step 7



- Remove the Wifi Card by pulling it up and out towards yourself.

To reassemble your device, follow these instructions in reverse order.