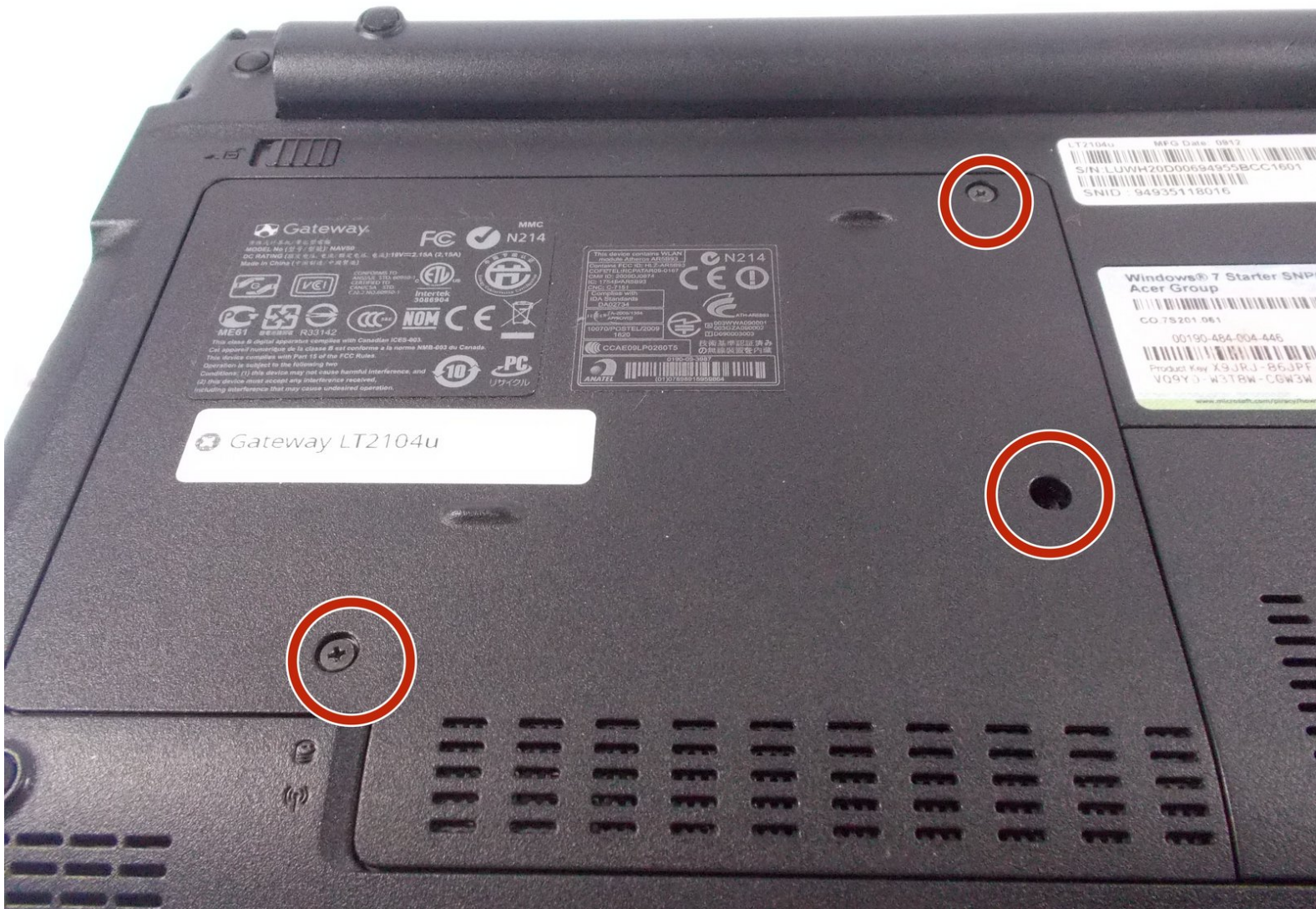




# Hard Drive Replacement Guide

Replace a hard drive to upgrade or replacement

Written By: Steven Park



---

## INTRODUCTION

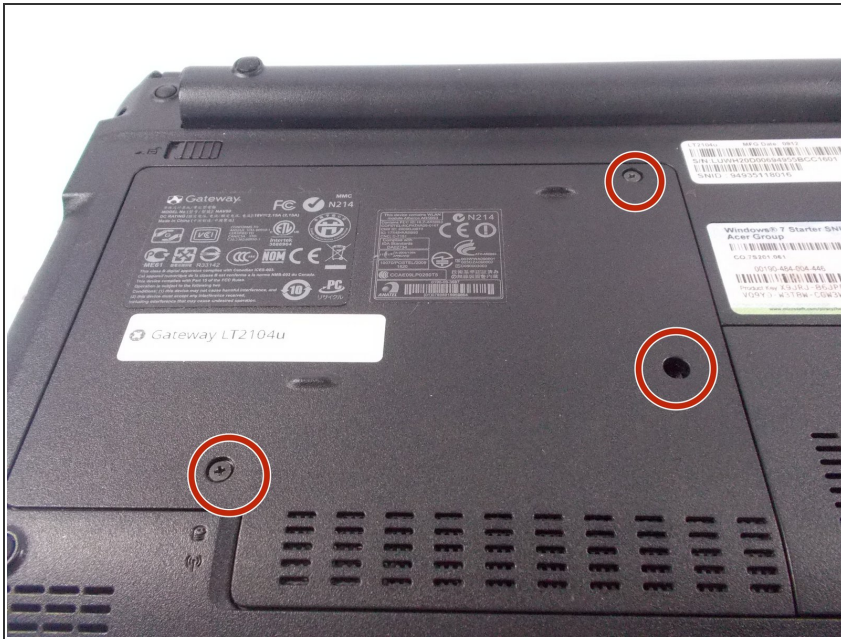
This guide is for replacing the hard drive on a Gateway LT2104u Laptop.



### TOOLS:

- [Phillips #0 Screwdriver](#) (1)
-

## Step 1 — Hard Drive



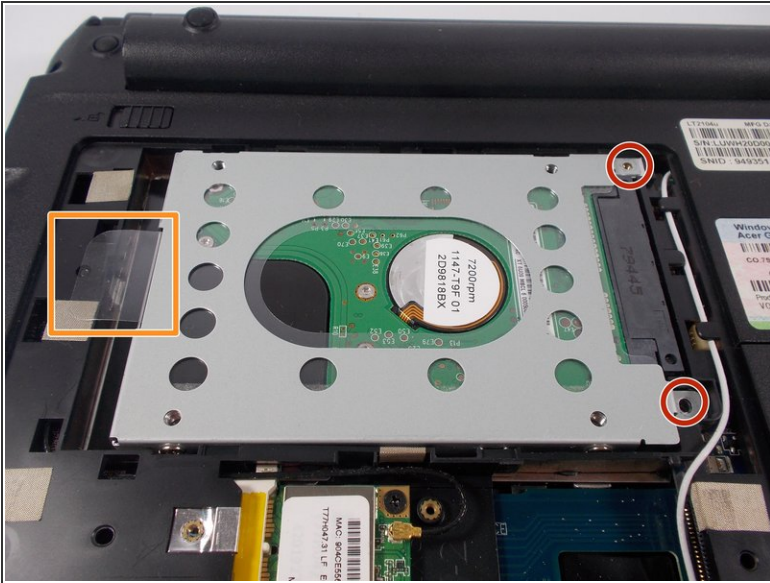
- Use a Phillips #0 screwdriver to loosen the screws.
- ⓘ The screws are designed to remain in the panel.

## Step 2



- To open the panel, use a plastic opening tool or your finger.
- ☑ If there is difficulty opening the panel, than the screws may not be lose enough.

## Step 3



- Use the Phillips #0 screwdriver to unscrew the two 5mm screws.
- Remove the hard drive by using your fingers to pull firmly on the clear tab.

## Step 4



- You have successfully removed the hard drive from the laptop.

To reassemble your device, follow these instructions in reverse order.