



Hasbro furby 2012 Light Sensor Replacement

This guide will show you how to replace the Furby's light sensor circuit board.

Written By: Jordan Castillo



INTRODUCTION

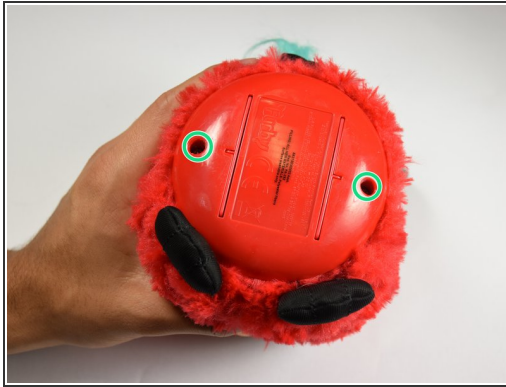
This guide will show you how to replace the Furby's light sensor circuit board.



TOOLS:

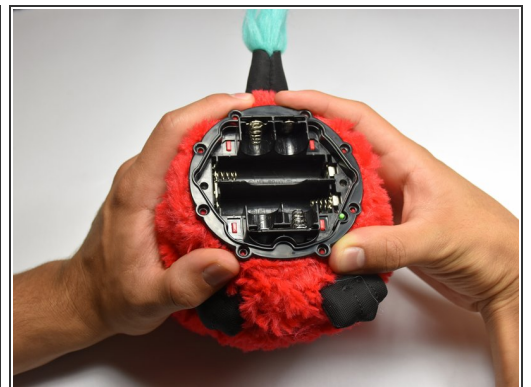
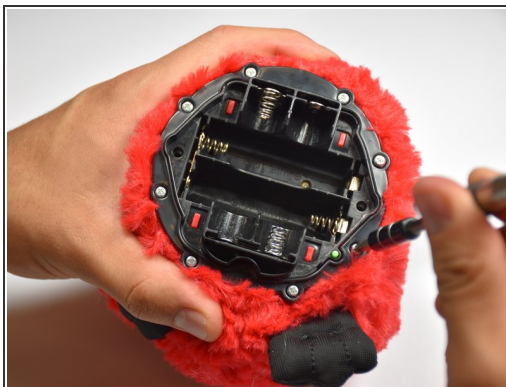
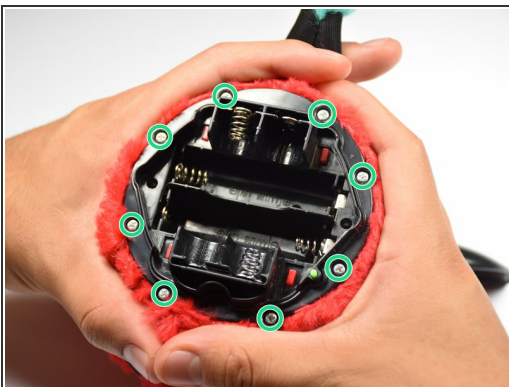
- [Phillips #0 Screwdriver](#) (1)
 - [Flathead 3/32" or 2.5 mm Screwdriver](#) (1)
 - [1.0 mm Flathead Screwdriver](#) (1)
 - [Tweezers](#) (1)
-

Step 1 — Outer Shell



- Use a flathead screwdriver to remove the two 10mm screws on the base of the Furby.

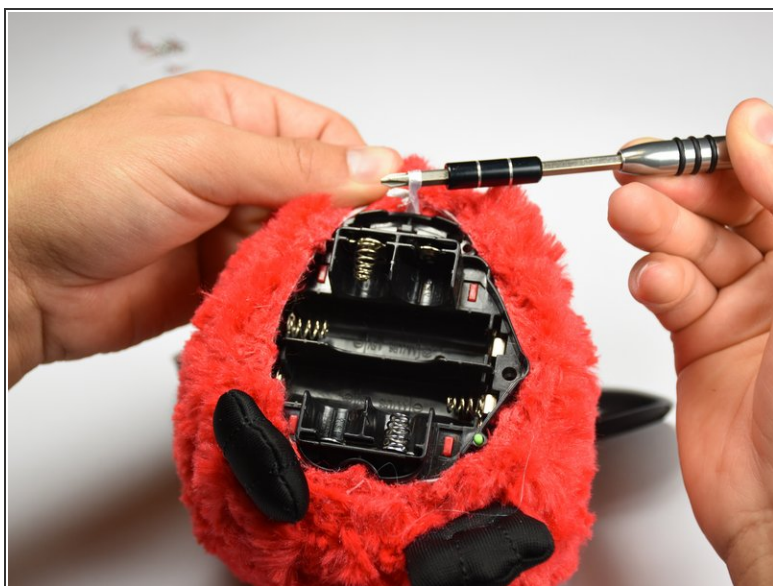
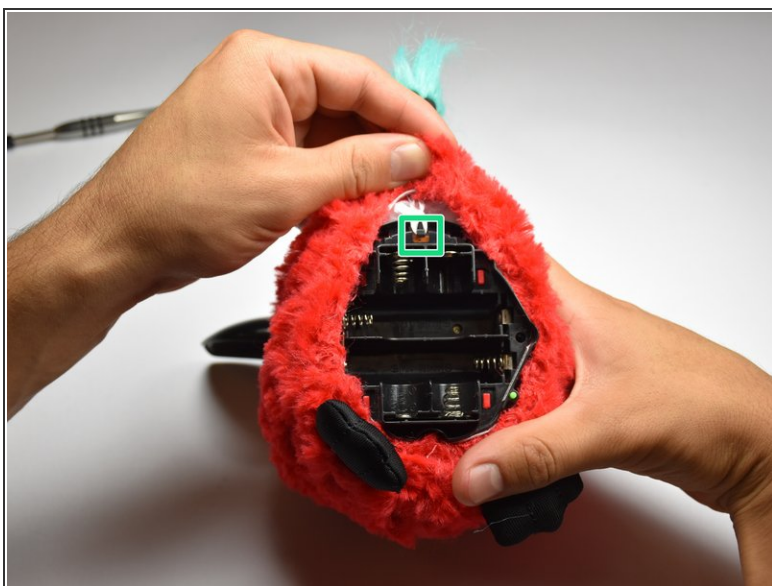
Step 2



- Use a Phillips #0 driver to unscrew the eight 10mm screws.
- Remove the base ring after unscrewing all the screws.

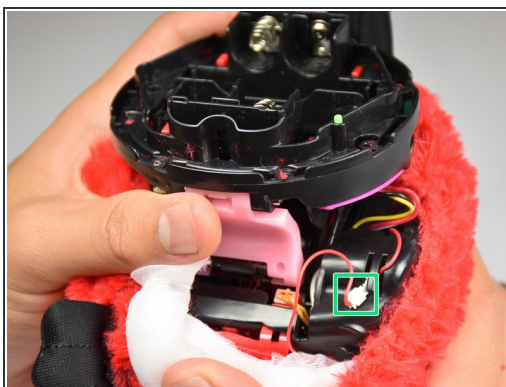
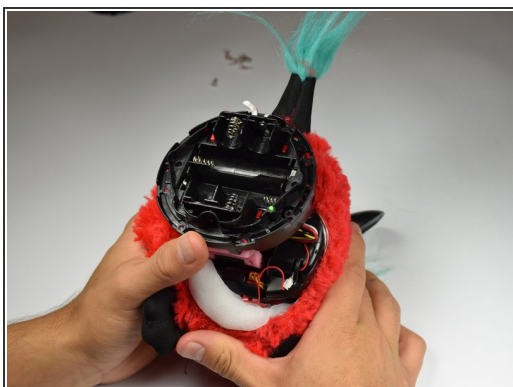
⚠ Be careful when lifting the base ring from the Furby. There are sharp edges that hold the base ring in place.

Step 3



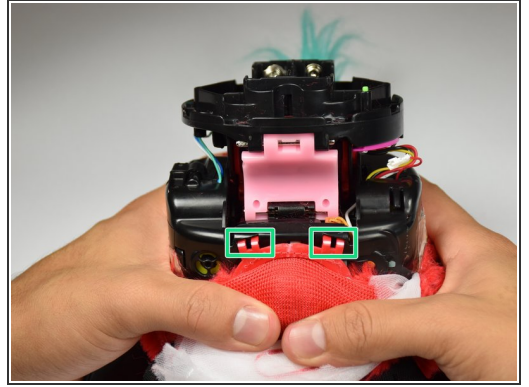
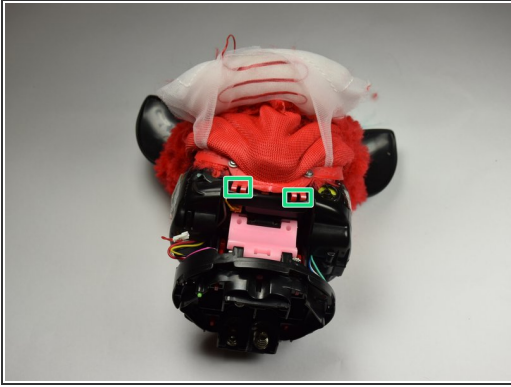
- Unhook the white ribbon from the tab on the base.

Step 4



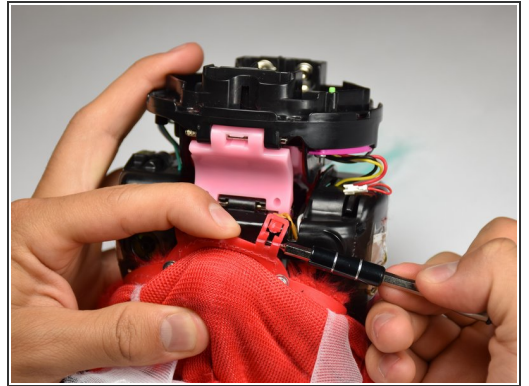
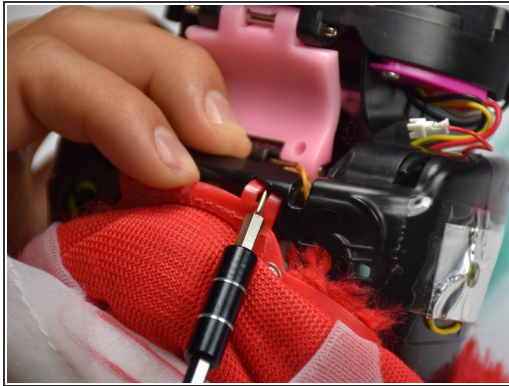
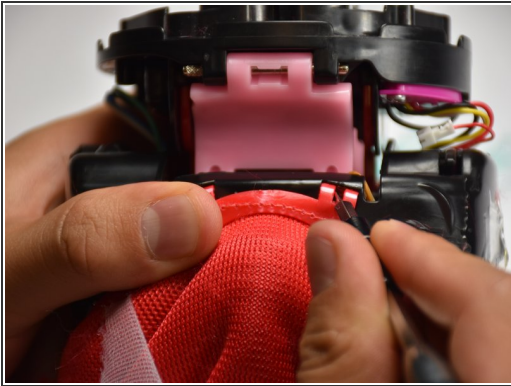
- Roll the Furby's fur downward.
- Disconnect the now exposed red wire.

Step 5



- Locate the two middle clips first.
- Locate the two remaining clips on Furby's sides, they are opposite each other.
- Orient the Furby upside down with the tail facing away from you.

Step 6



- Insert a metal prying tool directly into the clip opening.
- Press upward into the clip. At the same time, use your other hand to pull away the plastic seam from the Furby's body.
- Repeat the previous step to remove the remaining three clips.

Step 7



- Locate the two 10mm screws and remove them with the Phillips #0 head screwdriver.
- Lift up on the fur covering until the face of the Furby is exposed.

Step 8



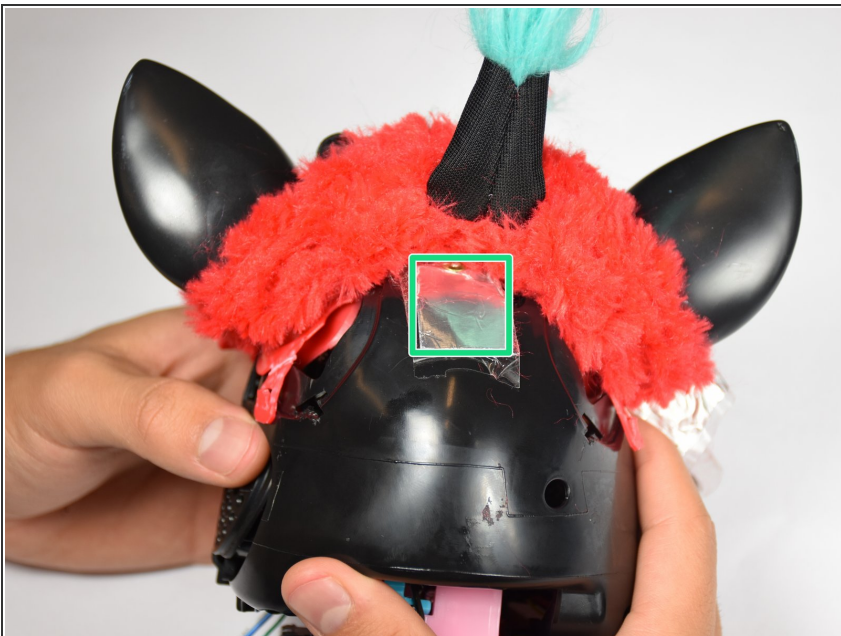
- Orient the Furby on its side to where the beak is facing left and locate the edge of the aluminum tape.
 - Lift tape gently and peel back until the tape is nearly removed.
- ⚠ Do not pull on the yellow wire located on the opposite end of the tape.

Step 9



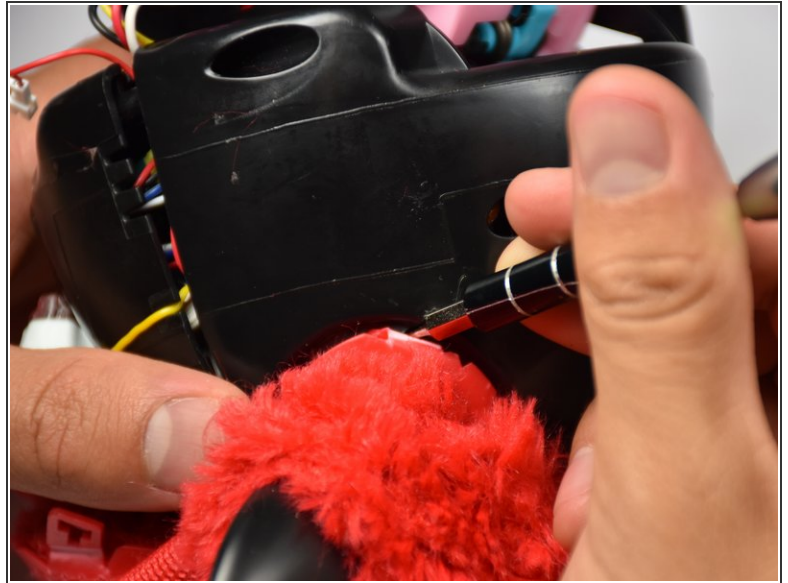
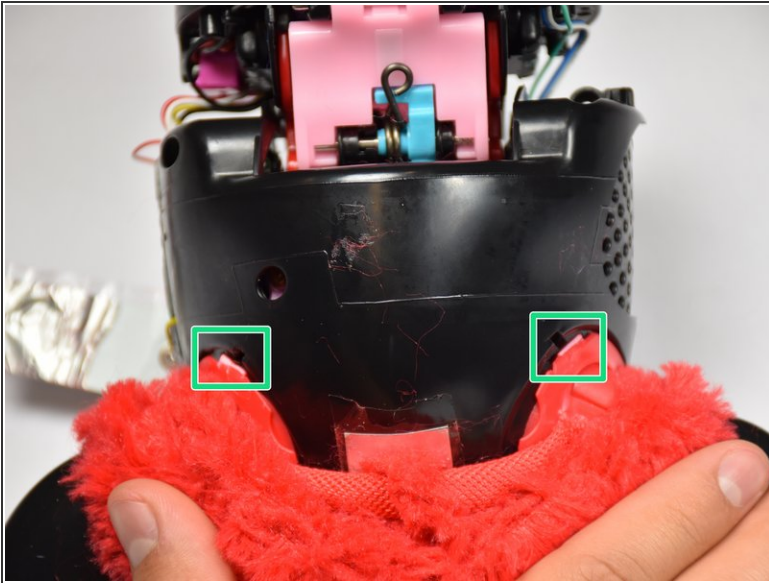
- Locate the four 10mm screws. Two on either side of body, and two on top of back plate, around the tape.
- Remove the 10mm screws with the Phillips#0 screwdriver.

Step 10



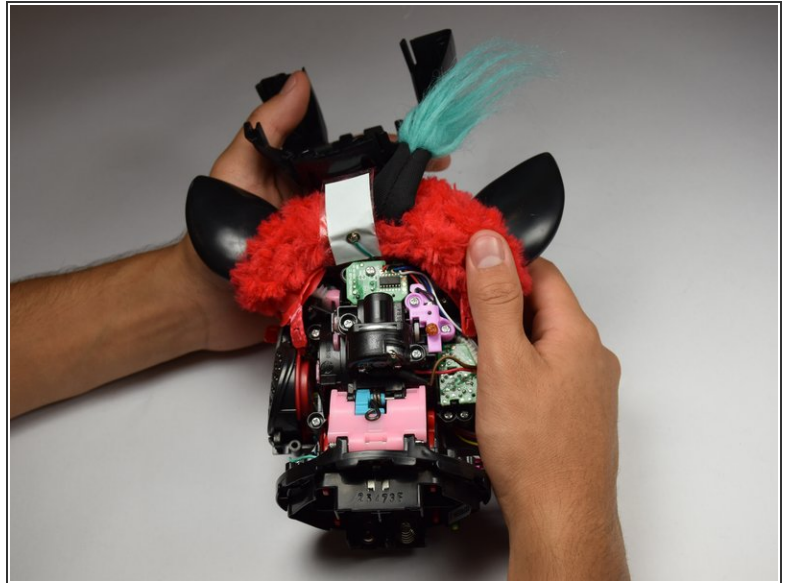
- Peel the tape gently, grabbing it from the bottom edge and folding the tape upward.
- ⓘ Peel the tape up until it is nearly detached from the black case.

Step 11



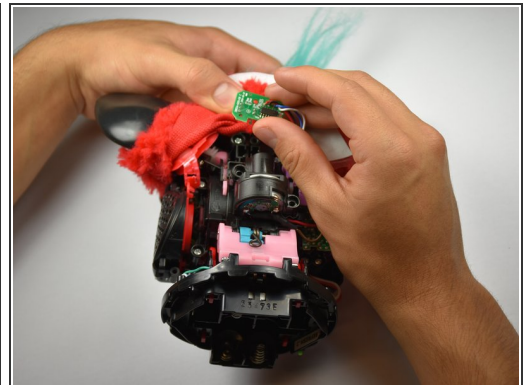
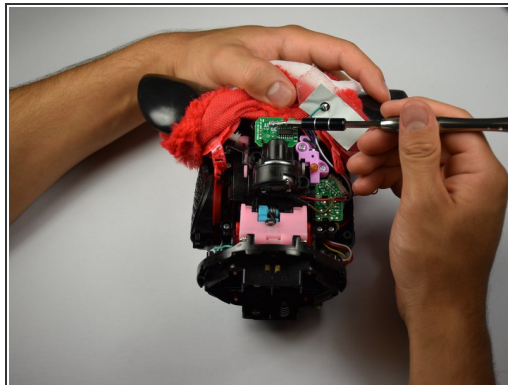
- Orient the Furby face down, with the base facing away from you.
- Locate the clips below the ears.
- Repeat the technique used in Step 6. Create leverage using a metal prying tool to press upward into the clip, while also pulling back on the clip itself.

Step 12



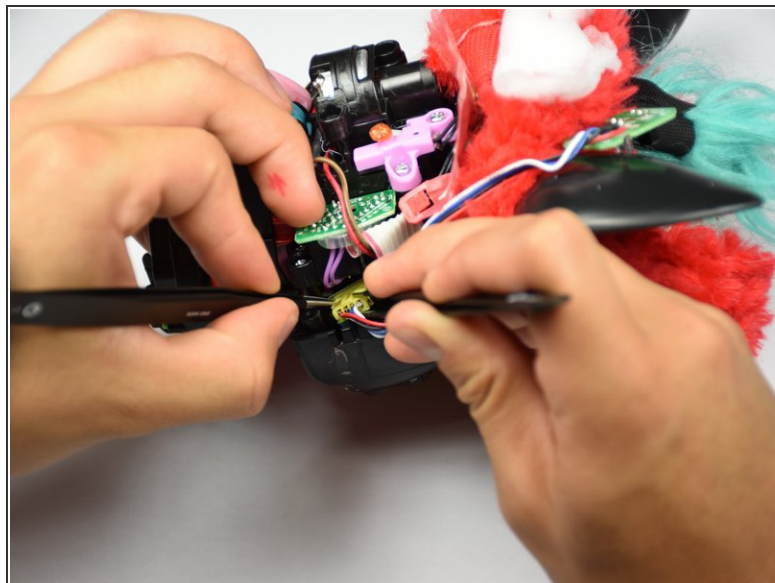
- Remove the loose, plastic back panel by pulling the panel away from Furby's body.

Step 13 — Light Sensor



- Remove the 10mm Phillips #0 screw holding the circuit board in.
- Gently lift out the circuit board.

Step 14



- Orient the Furby with the tail pointing left and the face pointing right.
- Use the pointed tweezers to spread open the socket, and the blunt tweezers to grip and tug out the connector.
- Insert your replacement light sensor connector.

To reassemble your device, follow these instructions in reverse order.