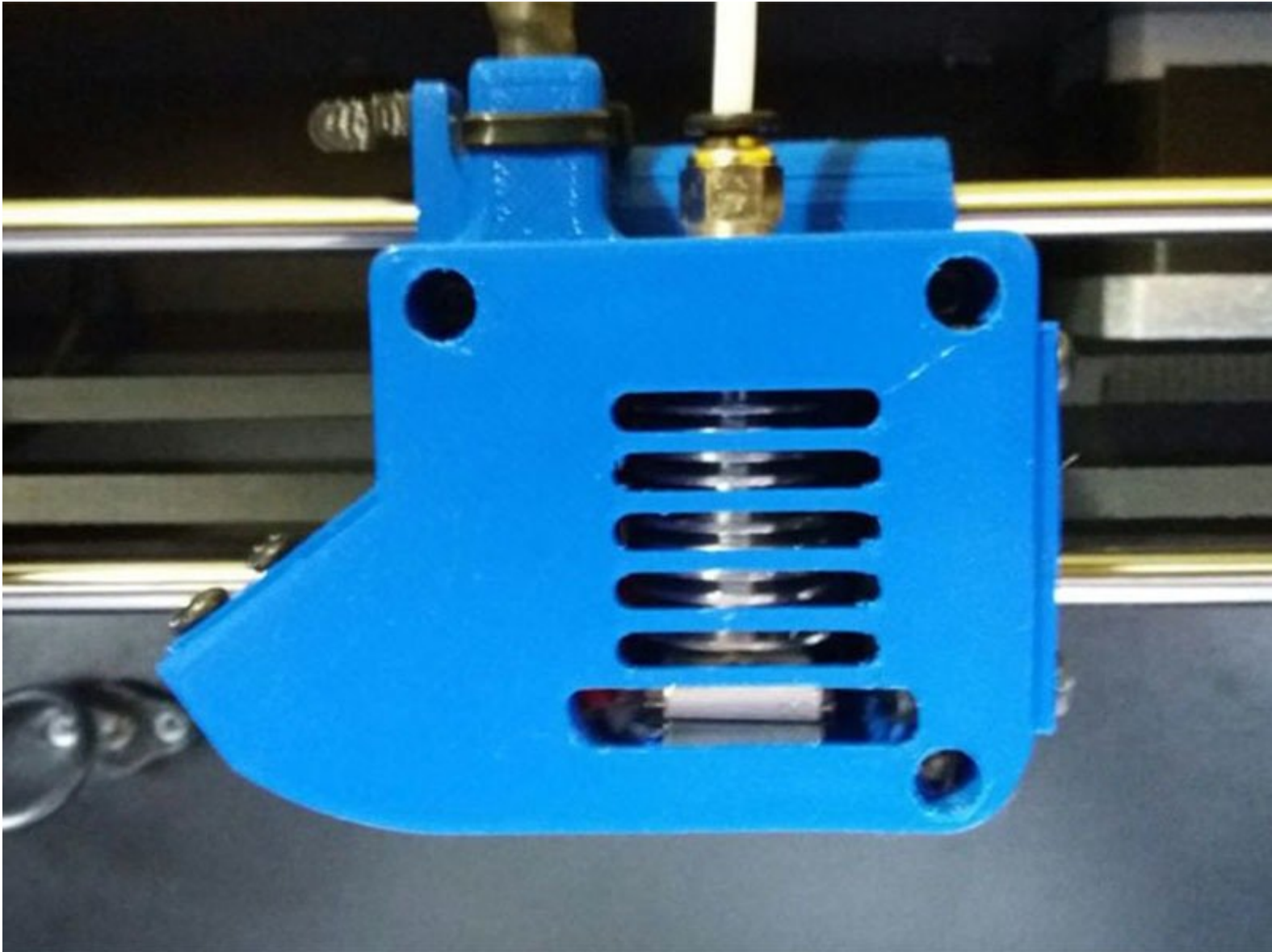




# Head Cleaning v3

Written By: Moustas Impessoras 3D



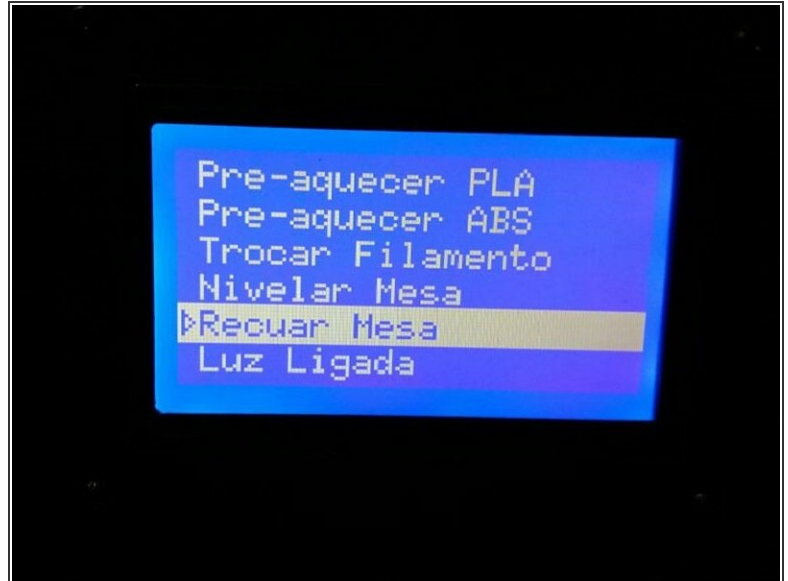
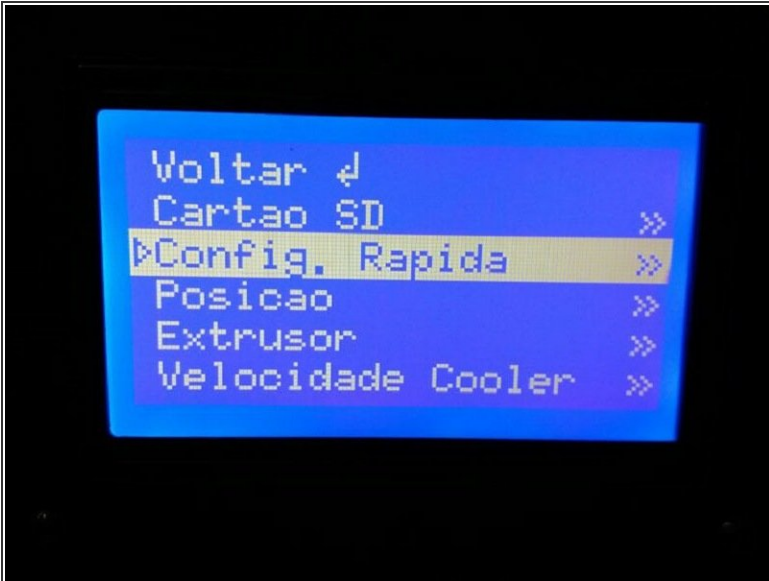
 **TOOLS:**

- [New Item](#) (1)
- [New Item](#) (1)
- [New Item](#) (1)
- [New Item](#) (1)

 **PARTS:**

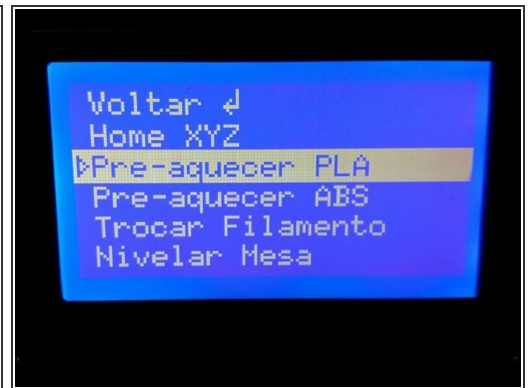
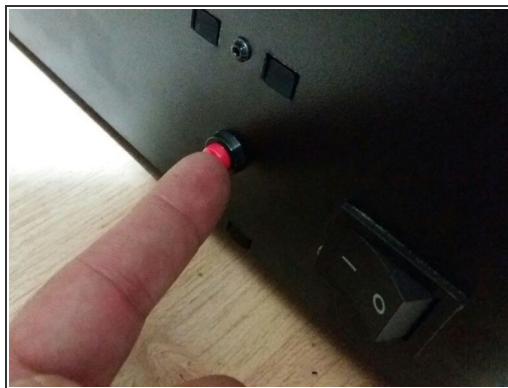
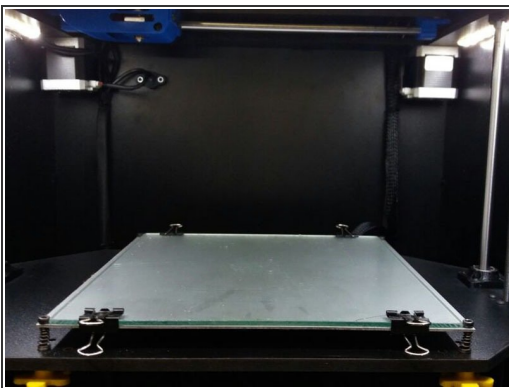
- [New Item](#) (1)

## Step 1 — Setting Up the Printer



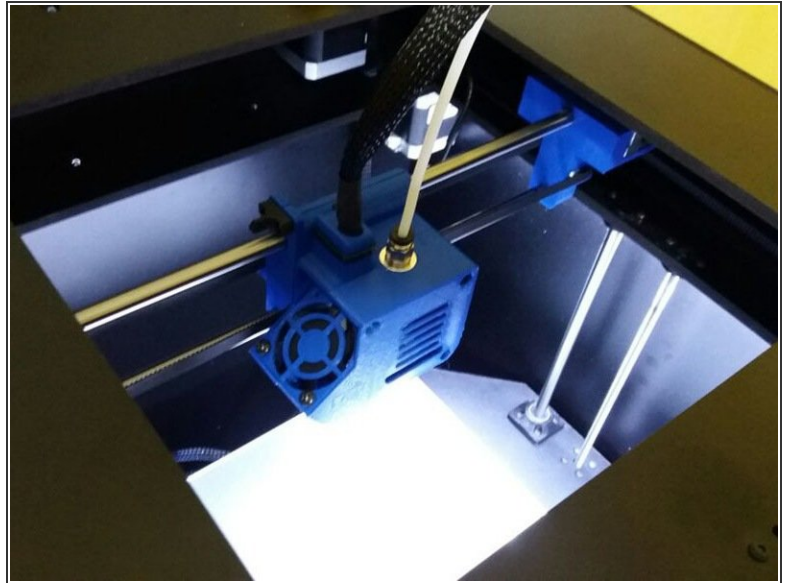
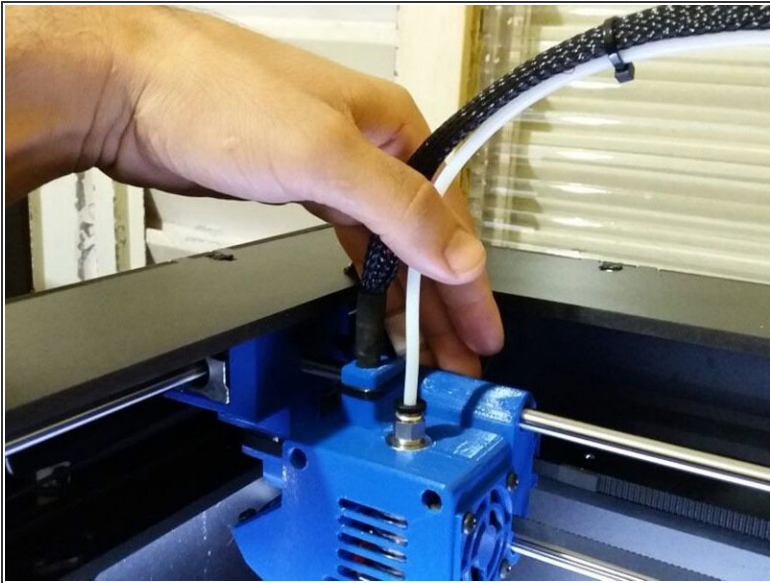
- With the printer switched on, access the menu screen and select the option "Quick Configuration".
- In the Quick Configuration menu select the option "Back off the Table".

## Step 2 — Repositing table



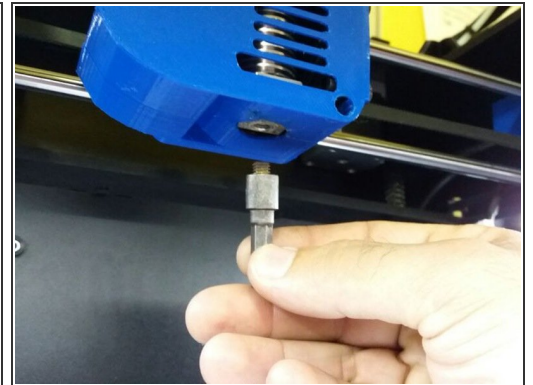
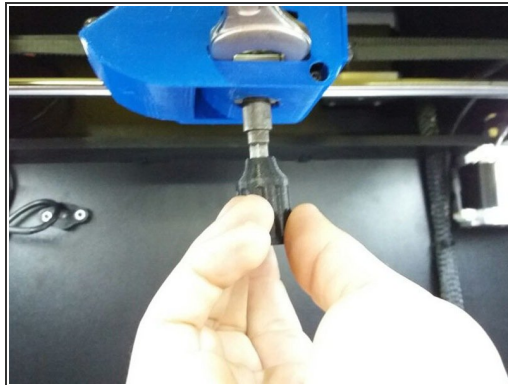
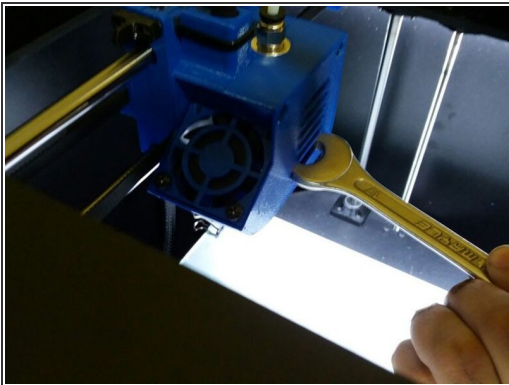
- When the table reach the position indicated in the picture, press the Reset button on the left side of the machine as shown.
- Select the option "Pre-heat PLA" in the Quick Configuration menu.

### Step 3 — Repositioning the head



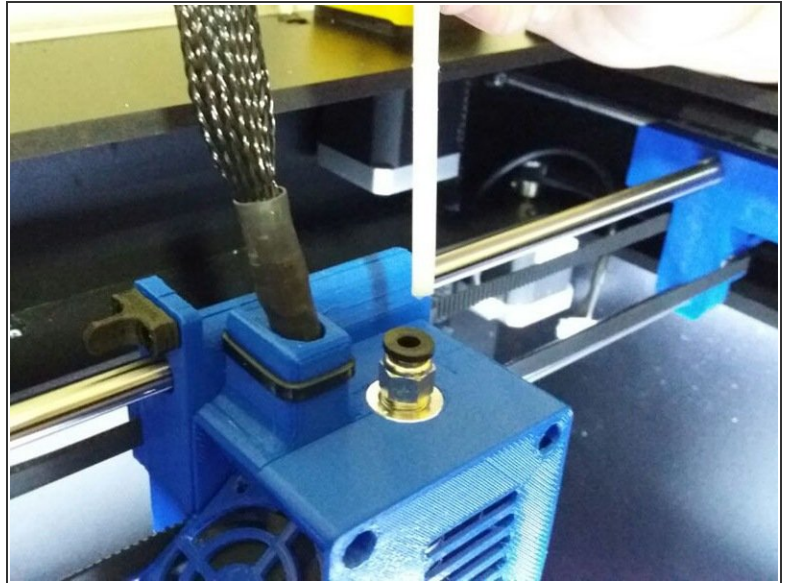
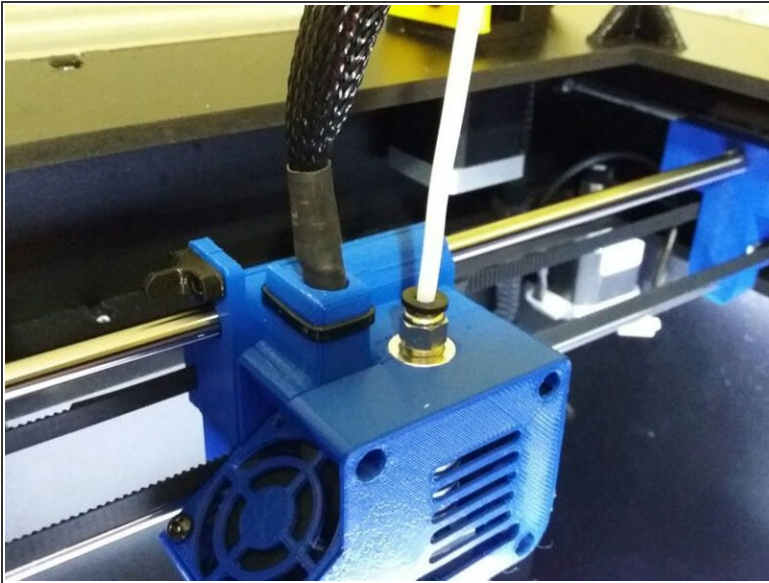
- With the table in position push the head manually toward the machine center in order to obtain an easy handling.

### Step 4 — Removing the nozzle



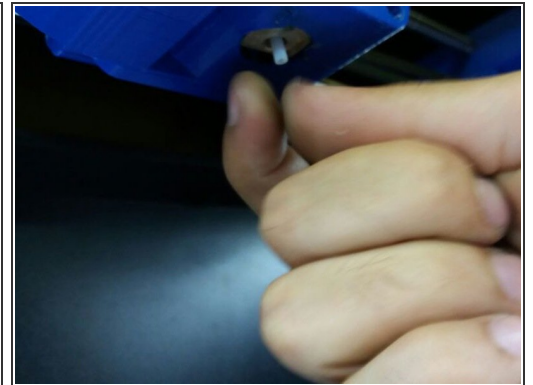
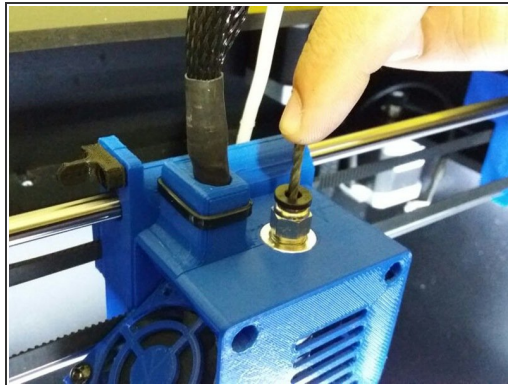
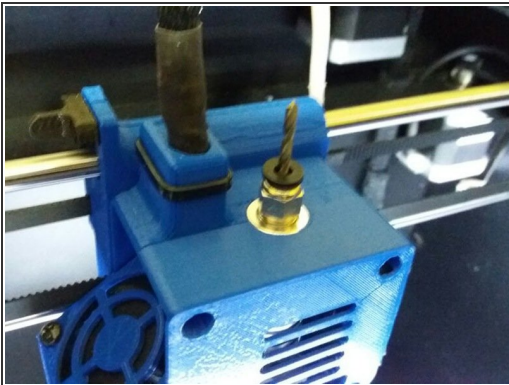
- Position the 17mm Fixed Key as indicated in the picture, locking the inner part of the head to prevent the nozzle head from turning.
- With the 7mm wrench take off the nozzle head.

## Step 5 — Removing the upper PTFE



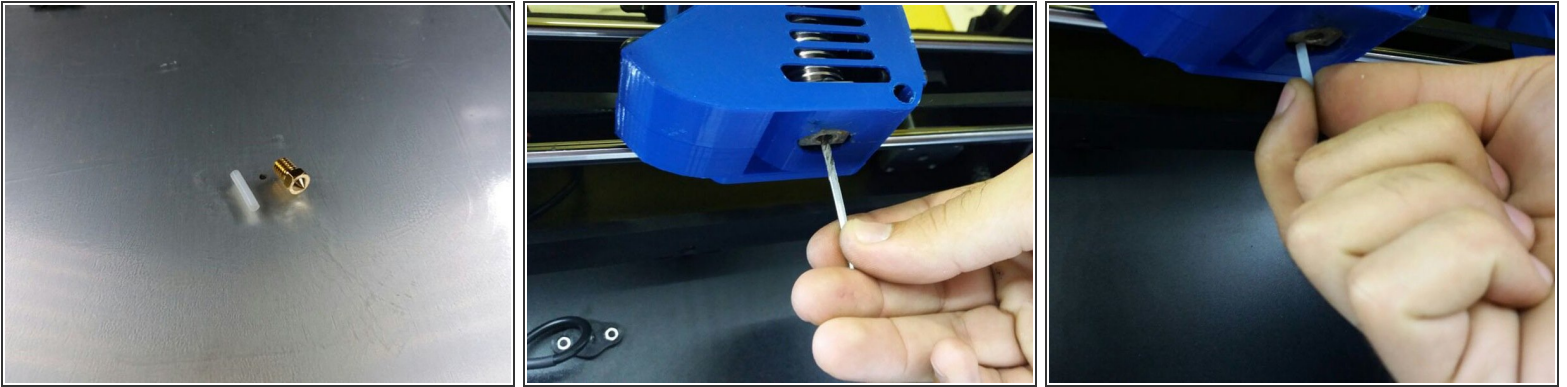
- With your hands, pull out the PTFE tube from the printhead by pressing the black piece of the part where the tube is seated

## Step 6 — Removing the inner PTFE



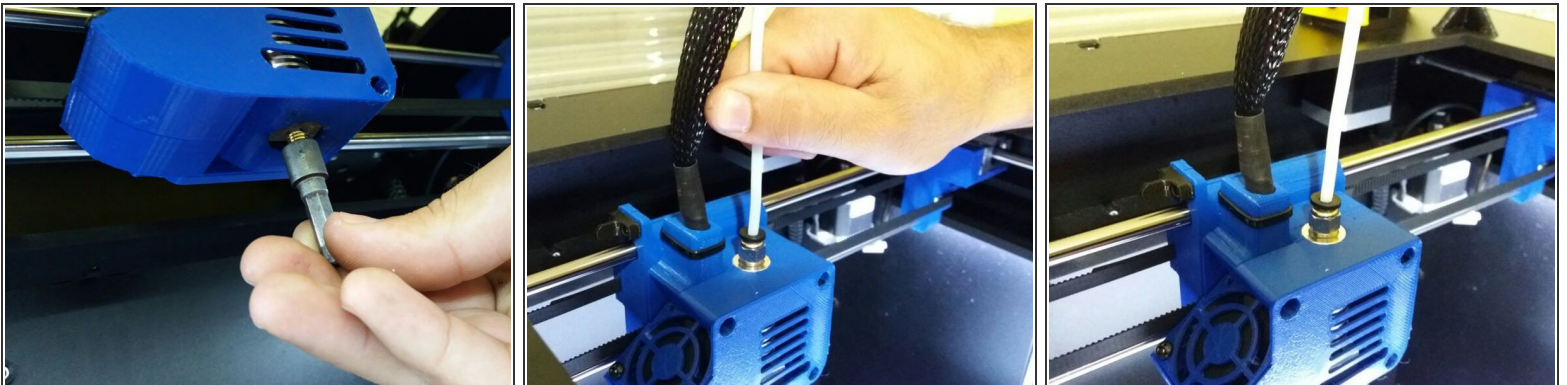
- By positioning the drill bit into the indicated hole, push it down until the inner PTFE comes out from under the head (where the nozzle hole is).

## Step 7 — Replacement and cleaning



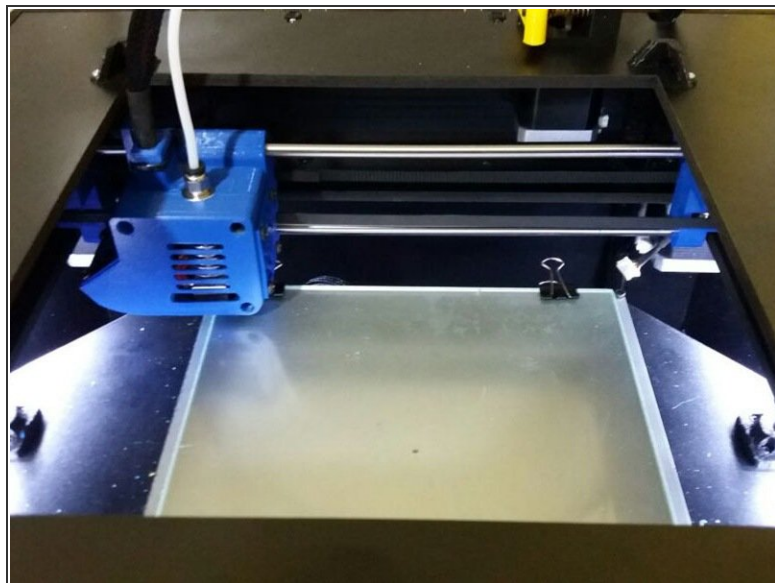
- Finish removing the inner PTFE and replace it with a new one or clean it.
- With the drill bit, clean the nozzle hole, as shown in the figure.
- Insert the new inner PTFE in place as shown.

## Step 8 — Reassembling the head



- Replace the nozzle at the bottom of the printhead and the PTFE at the top, pushing it all the way with your hands.

## Step 9 — Returning the table to start position



- Reposition the table in the "Home XYZ" menu option in the fast settings section and wait until it is in the position indicated by the figure

You are ready to continue your impressions!