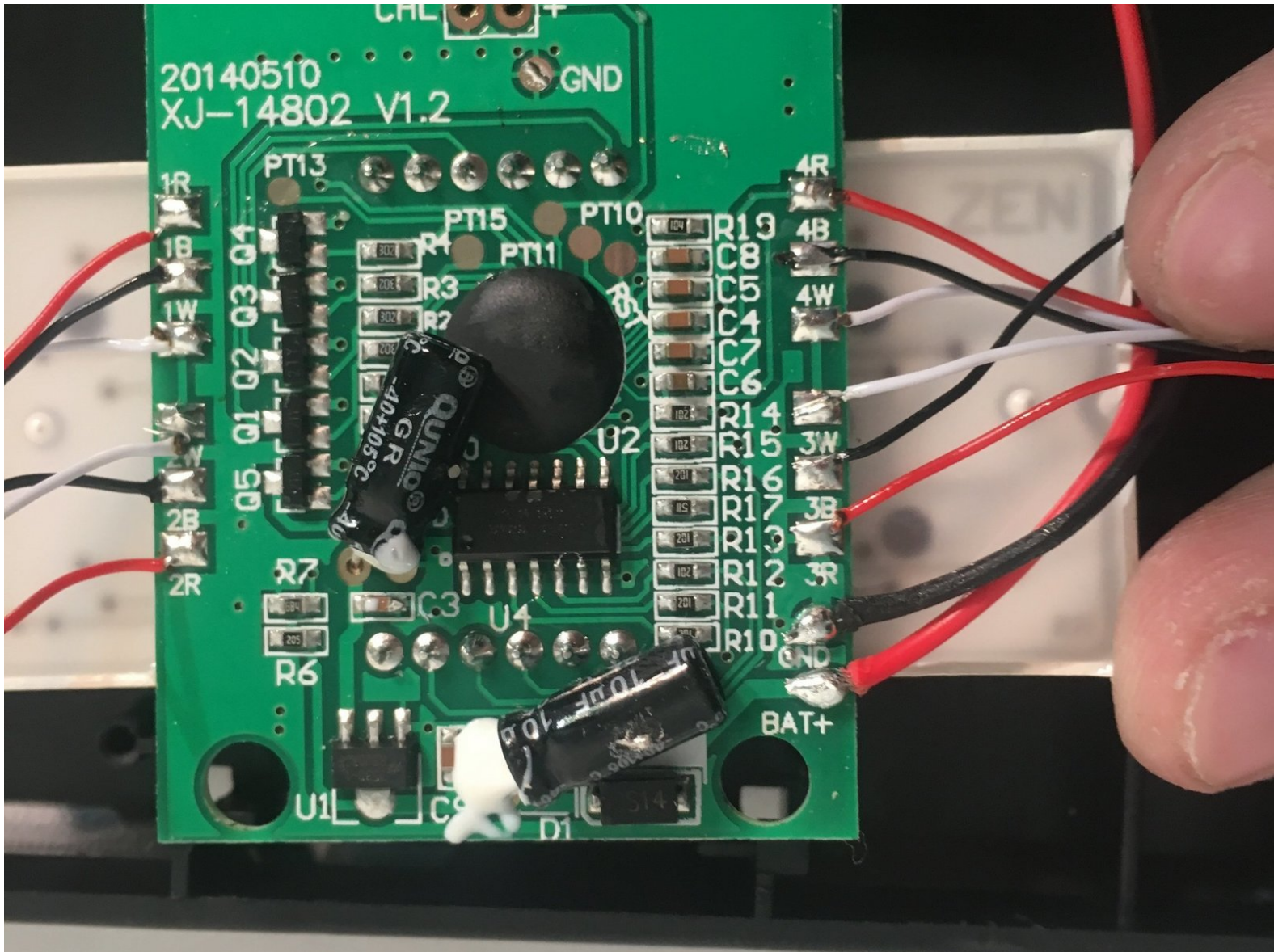




Health o Meter HDR743 Circuit Board Replacement

This is going to explain how to check if the circuit board is broken and explain how to replace it.

Written By: Travis Floyd

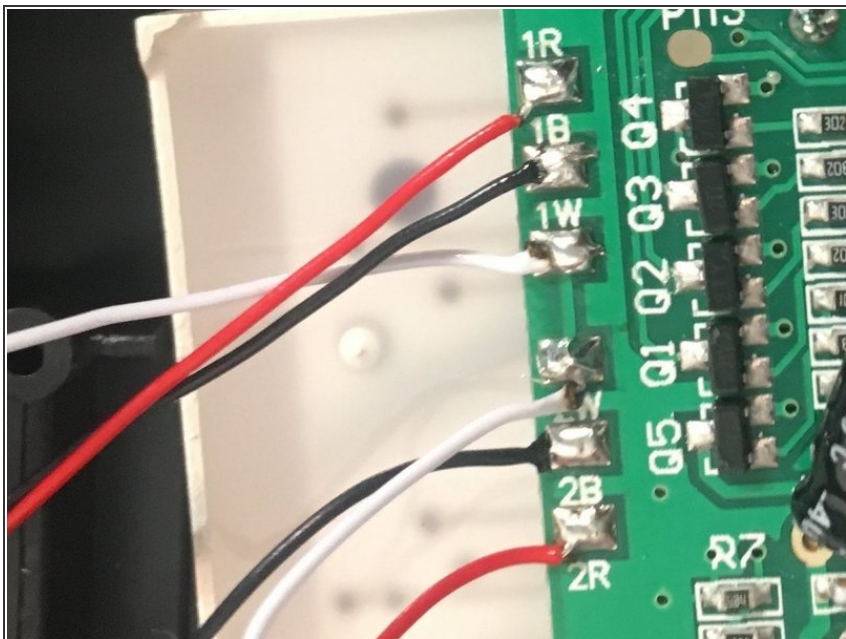




TOOLS:

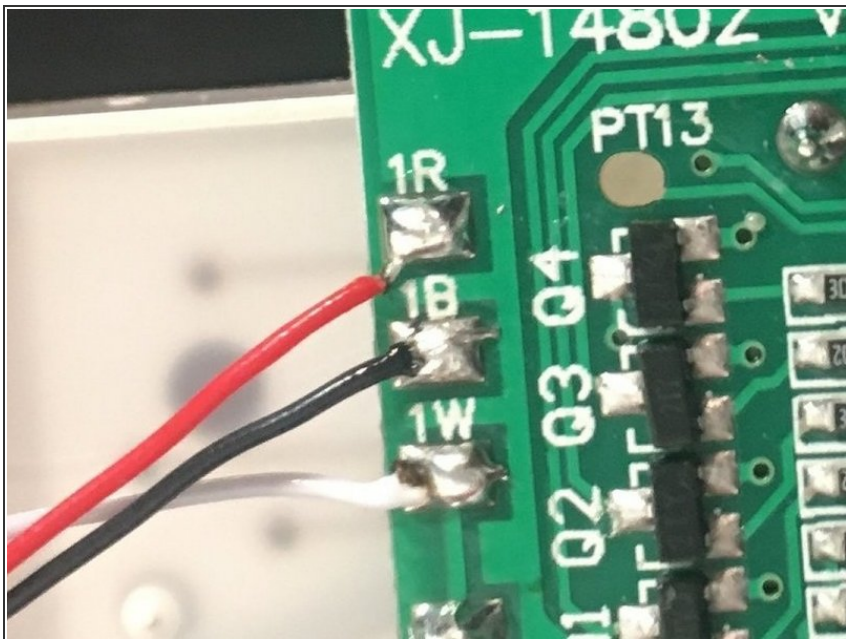
- [Soldering Iron](#) (1)
-

Step 1 — Circuit Board



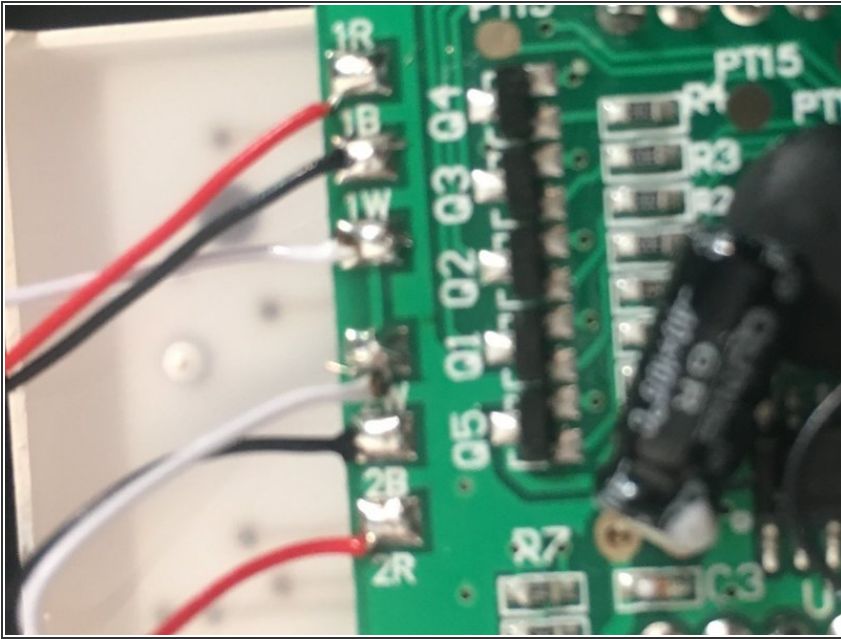
- Use a soldering iron to remove each connection between a component and the circuit board.
- For more information on how to solder and desolder connections, please visit [this guide](#).

Step 2



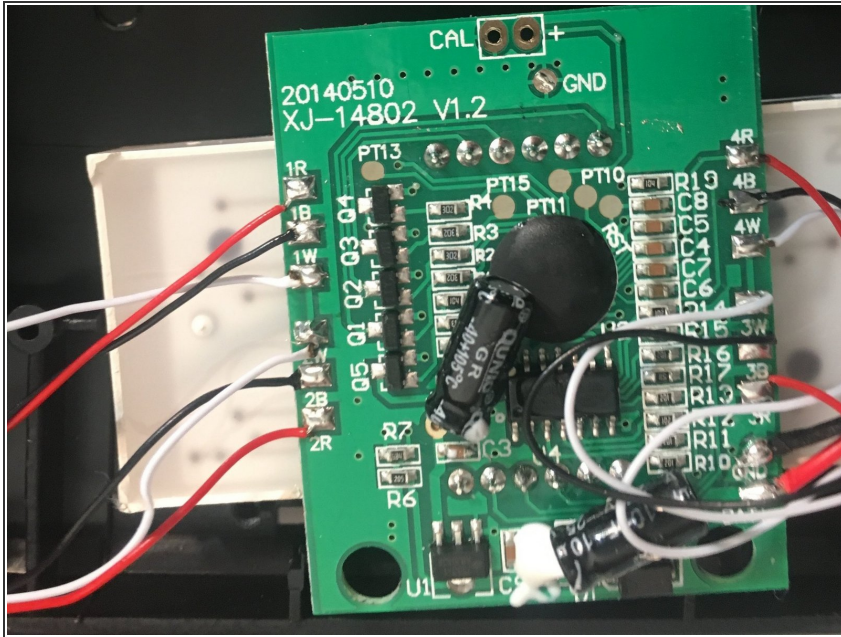
- Carefully add solder to each area where a connection will be made on the new board. This will make it easier to actually create connections.

Step 3



- Solder all of the components back onto the new board being very careful to not let any of the connections touch, which would cause more errors.

Step 4



- Make sure that the scale is working correctly with the new circuit board. If there are issues, check each connection and if they persist it may be another component depending on the issue.

To reassemble your device, follow these instructions in reverse order.