



Health o Meter HDR743 LED Display Replacement

This is going to explain how to check if the LED display is broken and how to replace it.

Written By: Travis Floyd

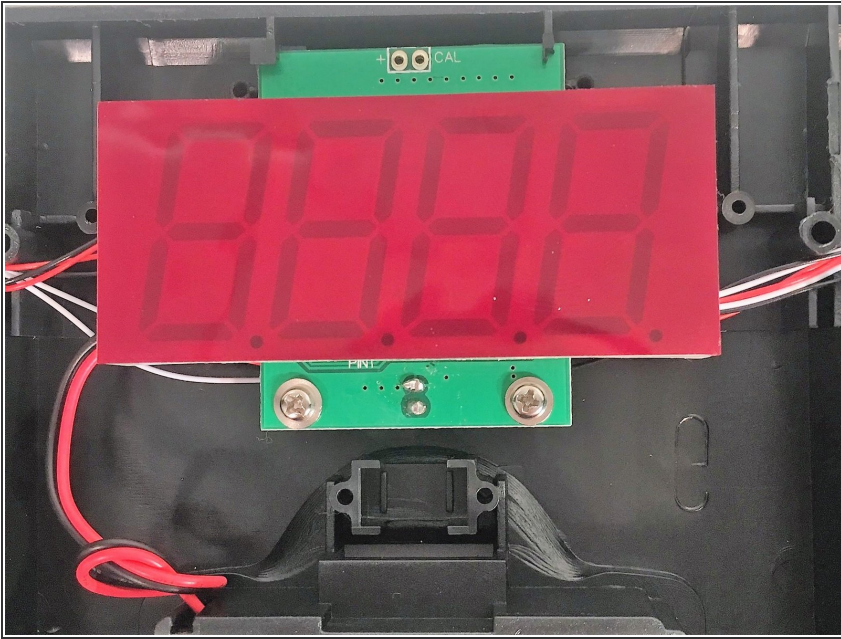




TOOLS:

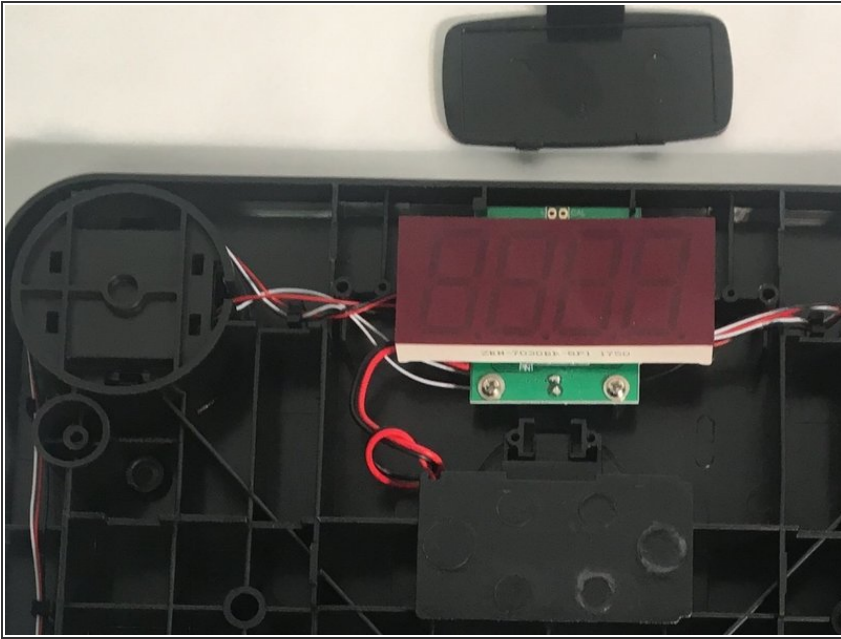
- [Soldering Iron](#) (1)
-

Step 1 — LED Display



- First look around the edges of the LED display to see if there are broken or missing solder connections with the circuit board. If any are seen then it may be as simple as re-soldering the display to the board. Otherwise the LED display likely needs to be replaced if there are display issues.

Step 2



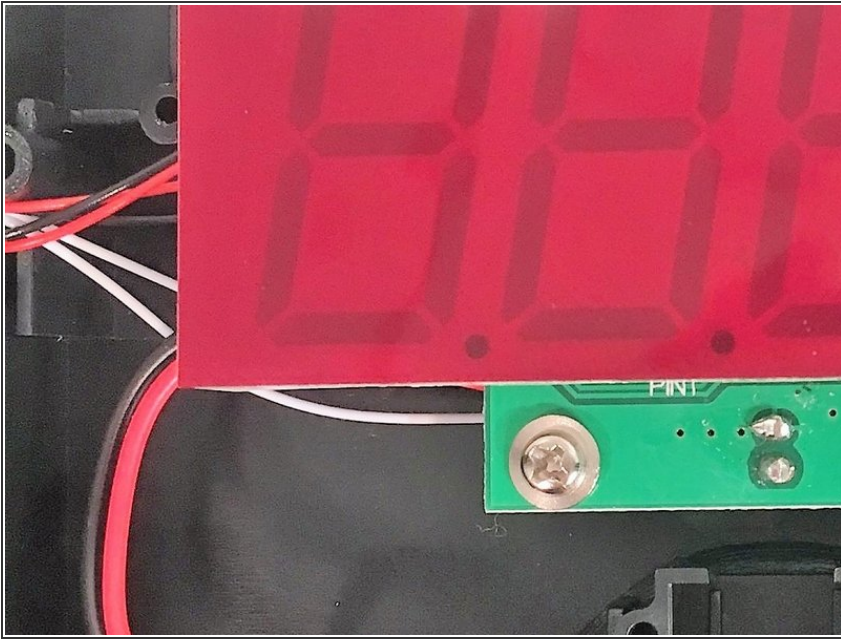
- Take a soldering iron and separate each of the connections between the circuit board and LED display. Once all of the connections are removed, pull away the broken LED display.

Step 3



- Remove unnecessary solder left over from the old connections to make sure each connection is separate while leaving a small amount on the board itself so it's easier to make new connections.

Step 4



- Use the soldering iron and solder to make connections between the new LED display and the circuit board. Be sure to not let any of the connections touch, otherwise the display will not function correctly.

Step 5



- Test the LED display. If there are still errors in the display then check your connections. If no issues are seen then it may be the circuit board itself, see Circuit Board Replacement.

To reassemble your device, follow these instructions in reverse order.