



Helicute Petrel H820HC (Drone) Disassembly

In this disassembly guide, you'll see how to disassemble the drone from fully working condition to a fully detached state.

Written By: Niel Lambrechts





TOOLS:

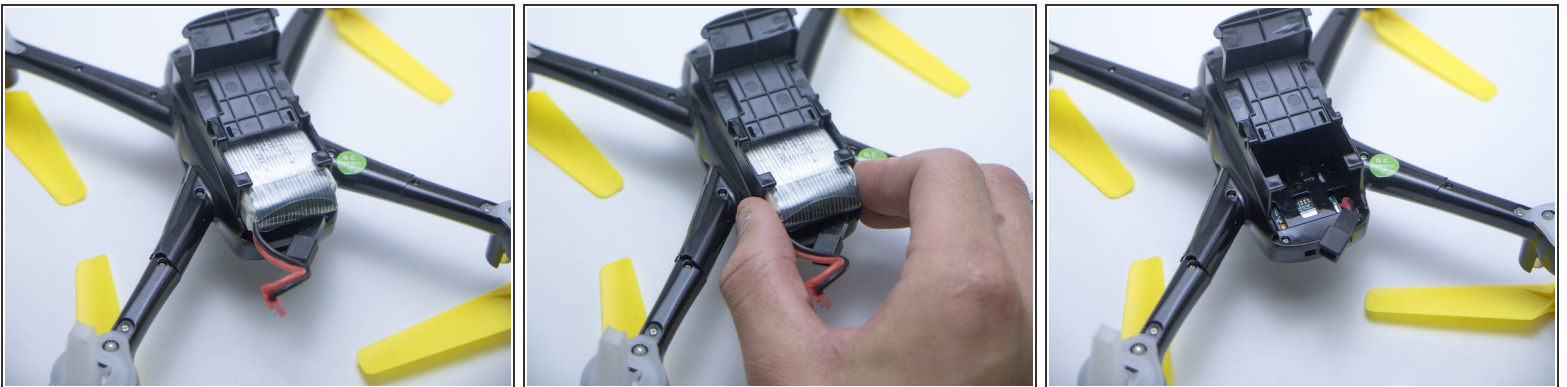
- [Tweezers](#) (1)
 - [Phillips #0 Screwdriver](#) (1)
-

Step 1 — Disconnect Battery



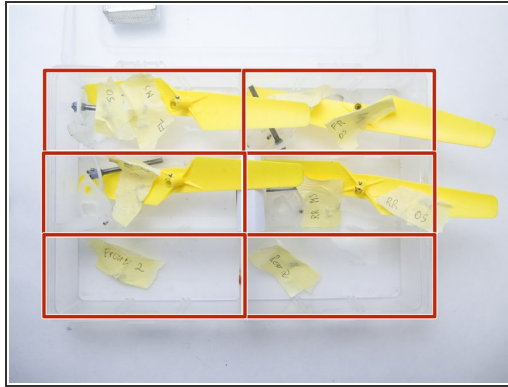
- Remove the battery by locating the battery compartment beneath the drone. Slide the latch back and flip it open.
- Disconnect the battery terminal as shown in Blue.

Step 2 — Remove Battery



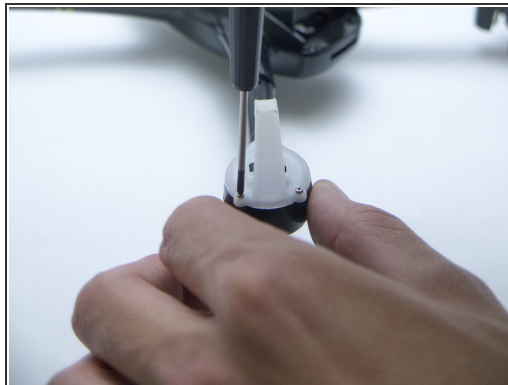
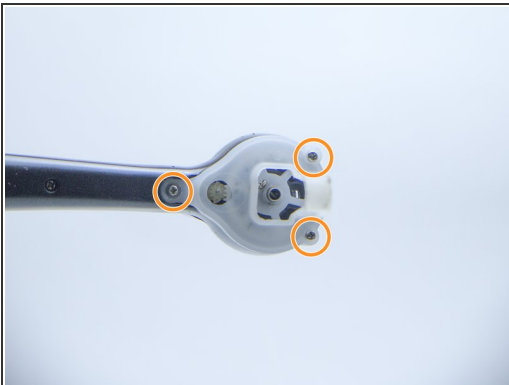
- Remove the battery by sliding it out.

Step 3 — Remove blade screws



- Unscrew all four blade screws by using a small Phillips screw driver and remove the blade.
- Remember to store all screws and components neatly. See second picture

Step 4 — Remove the landing legs



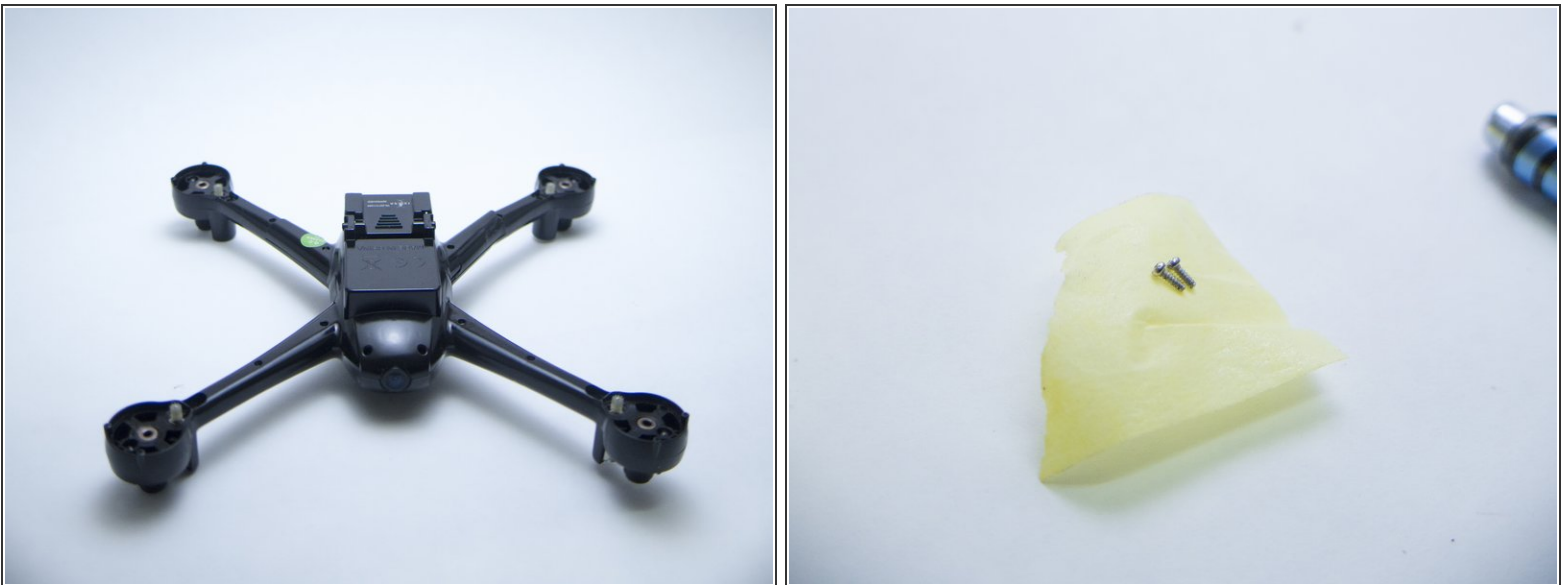
- Remove the legs by screwing the 3 screws out as indicated in the first picture.
- Remove the legs and screws and store it neatly.

Step 5 — Removing the gears



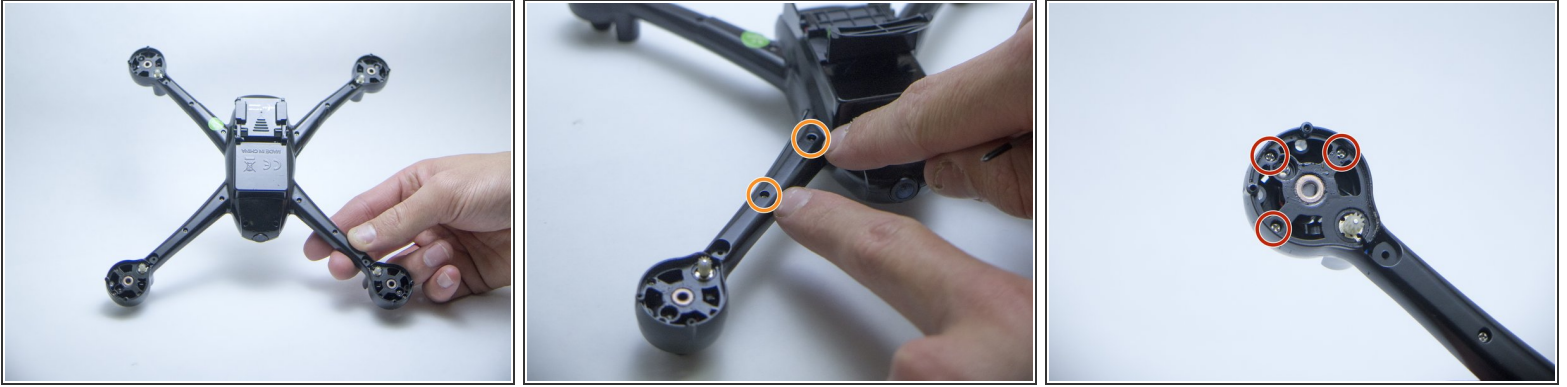
- Simply lift the gear and its axle.
- Note that when removing the small bearings (Red) can fall out. There are two bearings per axle, one on the top (Red arrow) and one on the bottom.

Step 6 — Summary and tip



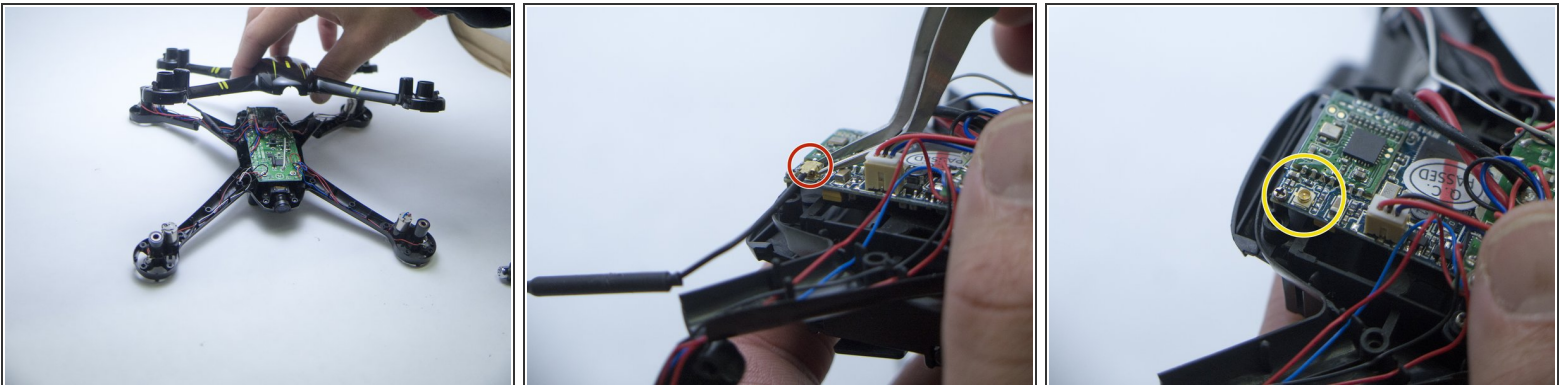
- After removing the blades/props, legs and gears, the drone should look like this.
- Tip: When storing the screws, you can tape them in masking tape and the label the tape with a pen to remember which screws comes where.

Step 7 — Separate the Body



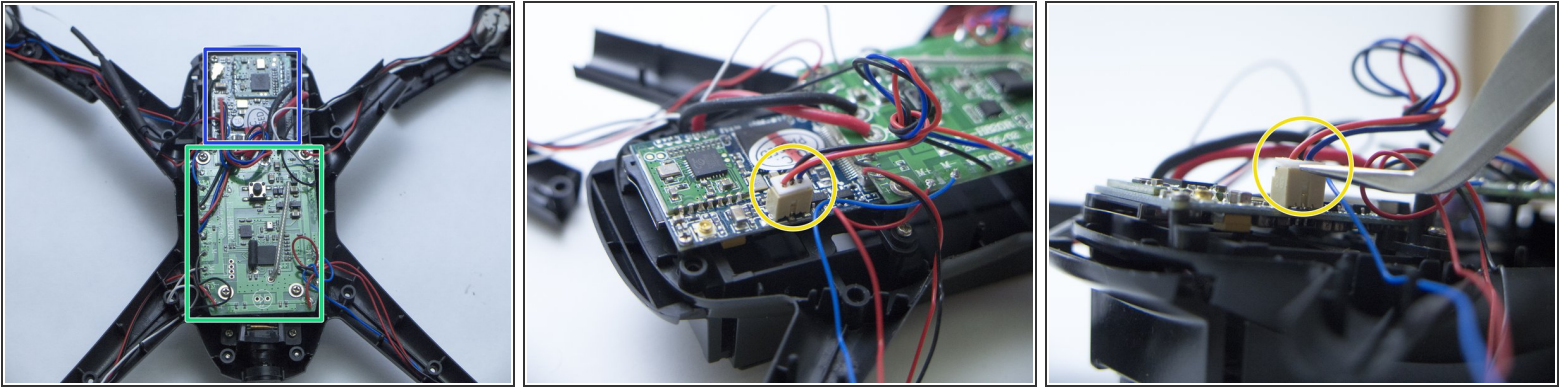
- Remove both screws on all four arms by using a small Philips screwdriver.
- Next. Remove the three screws on each arm's end by using a small Philips screwdriver.
- Remember to organize your screws.

Step 8 — Disconnect the antenna



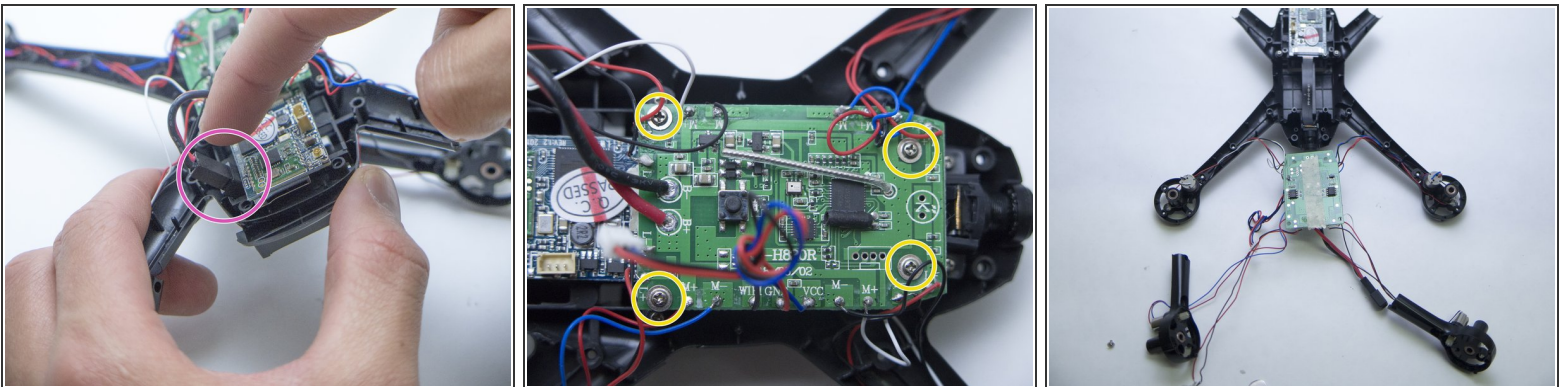
- After separating the top and bottom half of the drone locate the antenna as shown the second picture.
- Carefully use your tweezers and lift the the antenna out by wedging the tweezers underneath. (See picture)
- After the removing of the antenna it should look like this(The third picture)
- At this stage you can access most of the drone and don't need further disassembly.

Step 9 — Disconnect the WIFI PCB



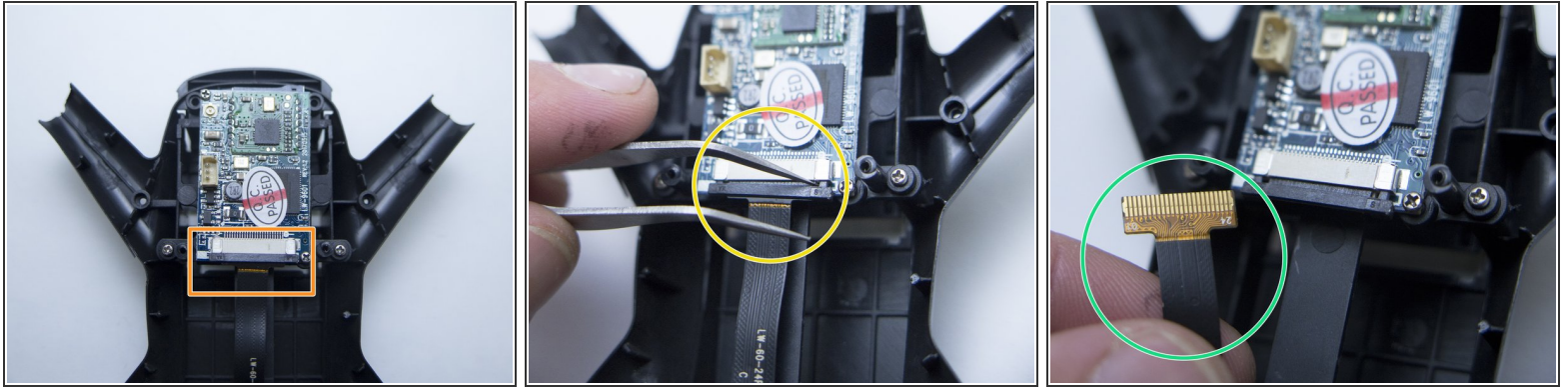
- Disconnect the WIFI PCB(Blue) from the main PCB(Green) by disconnecting the ribbon cable.
- Use the tweezers and grip the white plastic end of the cable. Slowly pull and wiggle the two ports from each other.

Step 10 — Remove the main PCB



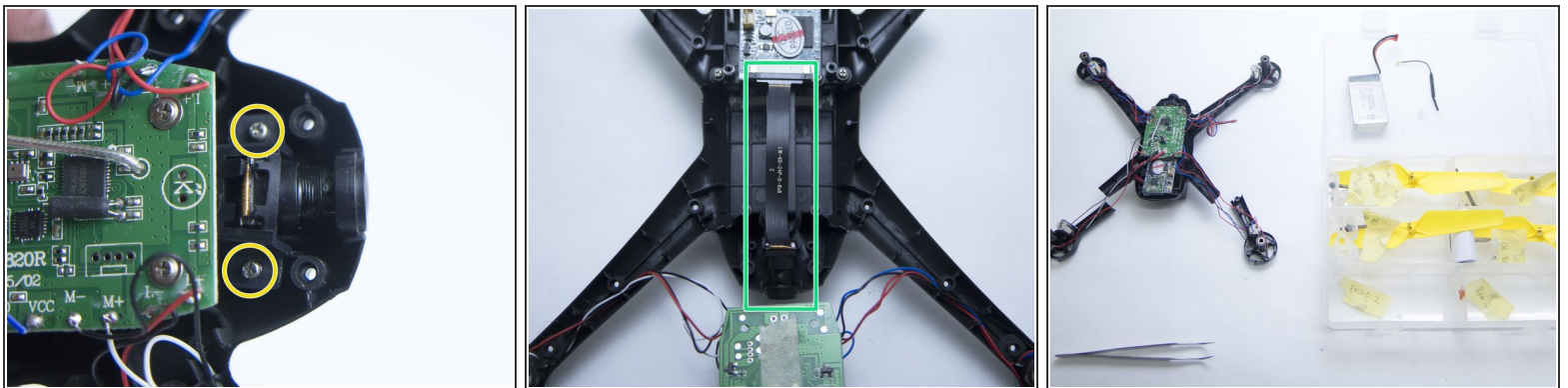
- To access the camera unit the main PCB needs to be disconnected.
- First, Pull the battery terminal out through the hole between the WIFI PCB and plastic side of the drone.
- Next, Remove the four screws on the main PCB as in the second picture.
- Now you can fully access the WIFI PCB and camera unit.
- Two of my drone's arms were broken and therefore I could flip over the whole main PCB.

Step 11 — Remove the camera cable



- To disconnect the cable between the camera and WIFI PCB follow the next two steps.
- Use the sharp point of the tweezers and gently move the black plastic wedge back to loosen the cable.
- Pull the cable gently with your fingers and it should easily come out.

Step 12 — Remove the camera and done!



- Unscrew the last two screws of the camera unit.
- The camera should be loose now and can be taken out of the drone.
- And there you go! Well done!
- I hope that this Guide was helpful.

To reassemble your device, follow these instructions in reverse order.

This document was generated on 2020-04-05 12:30:55 PM (MST).

