



Hello Zee Smart Core Battery Replacement

Do this at your own risk. This battery is dangerously soldered down, so replacements can be difficult.

Written By: Levi G



INTRODUCTION

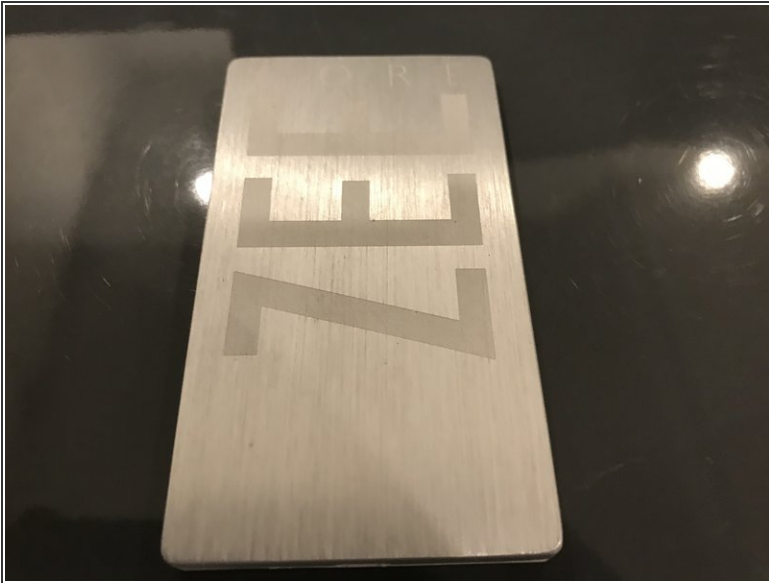
Do this at your own risk. This battery is dangerously soldered down, so replacements can be difficult, and is only for those who have experience with soldering.



TOOLS:

- [Metal Spudger](#) (1)
 - [Soldering Iron](#) (1)
 - [Solder](#) (1)
 - [Flashlight](#) (1)
-

Step 1 — Exterior



- This particular model is 64GB
- Do not operate on this device if:
 - The battery has swelled or expanded
 - The battery is hot
 - The battery is charged (drain the battery before opening)
 - The battery has been punctured
 - The battery has leaked
 - The device is warm or hot to the touch

Step 2 — Opening



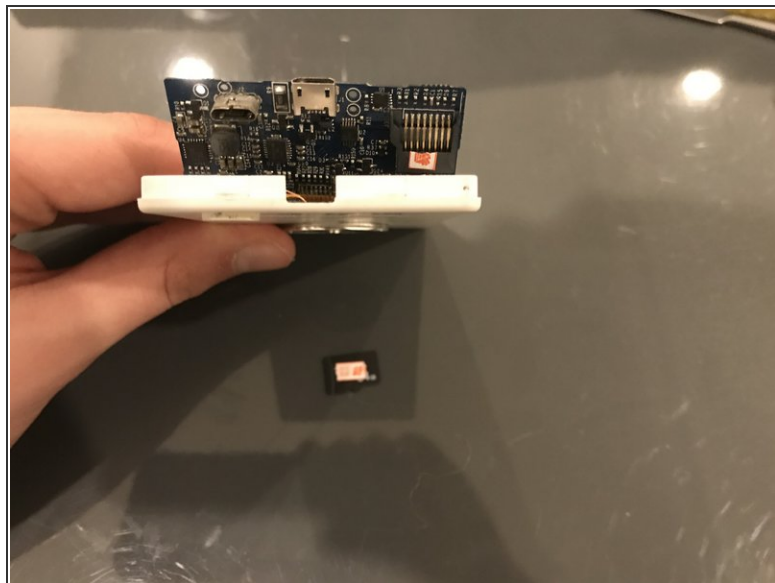
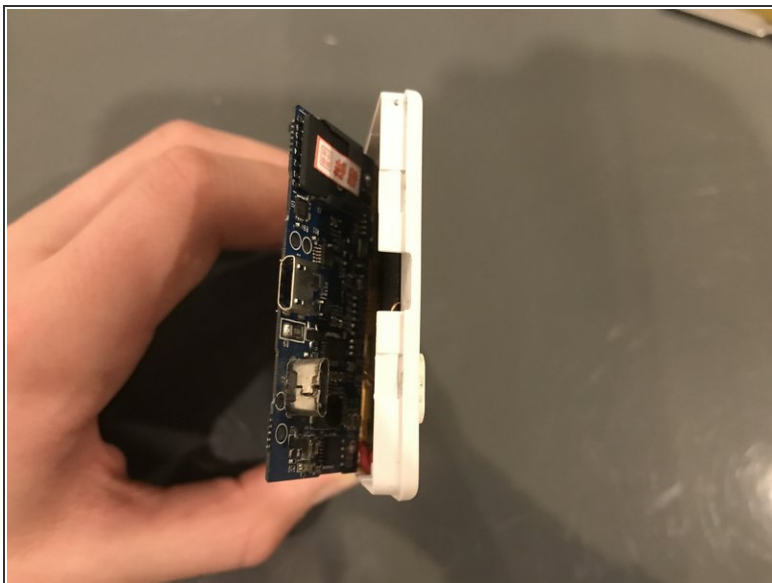
- Use a metal spudger to get inside.
- A corner is a good place to start.

Step 3 — Circuit Board Removal



- Use the pointed tip of your metal spudger to unscrew the 2 screws
- Make sure to replace the circuit board protective film during reassembly

Step 4 — Quick Stop



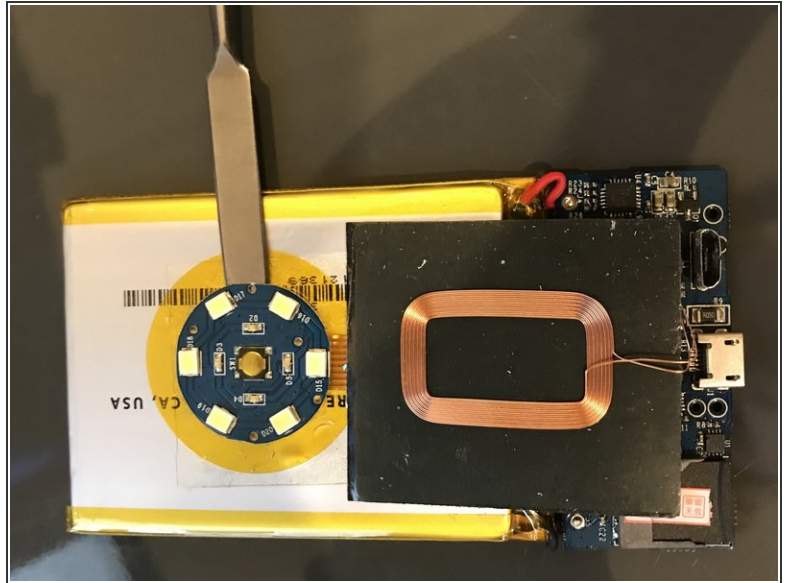
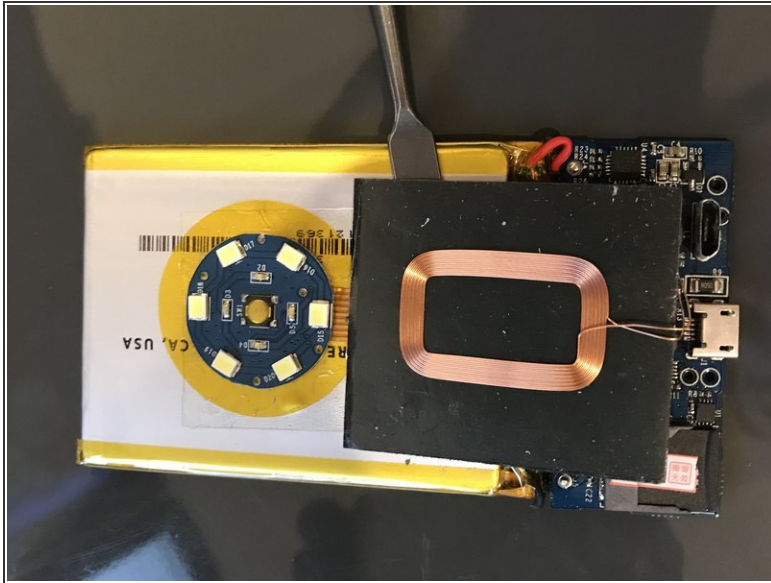
- Here's MicroSD card that you can upgrade if you want!
- Pause here if you wish to do so.

Step 5 — Electronics Assembly Removal



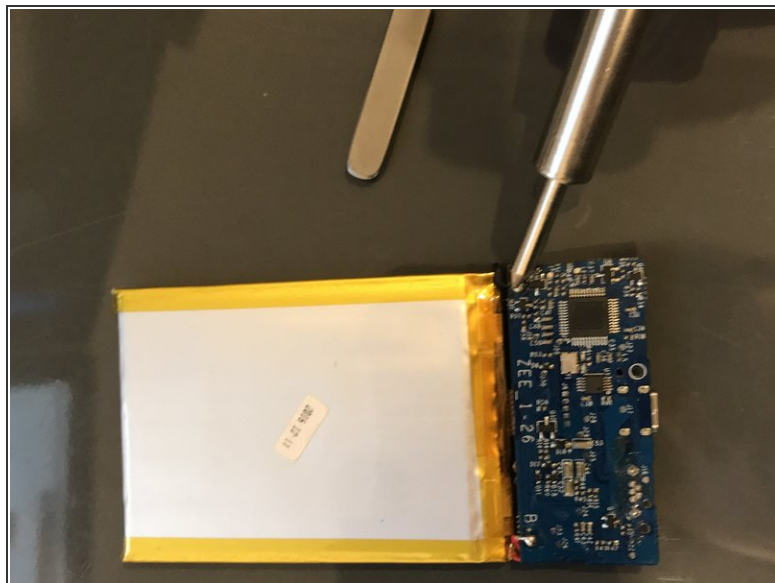
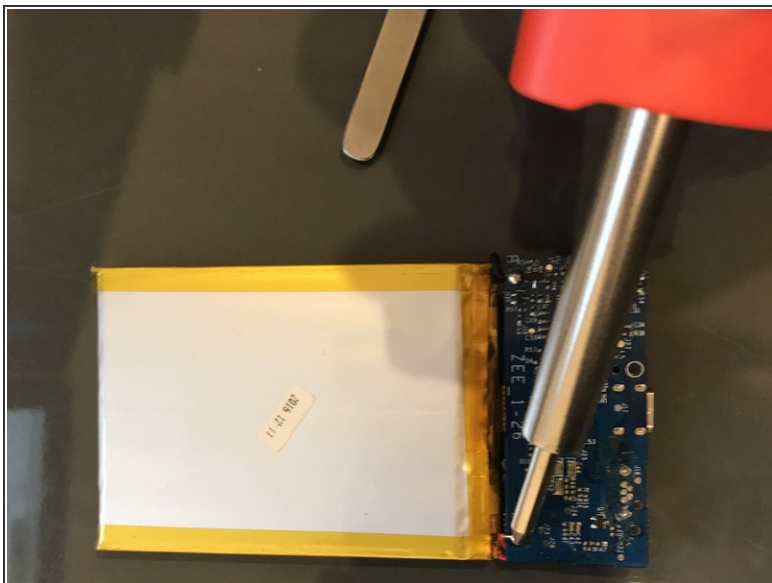
- Pry the battery up with your metal spudger.
- DO NOT PUNCTURE THE BATTERY
- There are no strong adhesives, but there is tape holding the battery in.

Step 6 — Light Array and Qi Coil Removal



- BE CAREFUL
- This may be a point of no return. Proceed at your own risk
- Use your metal nudger, or any other tools that can help you, in order to remove the Qi Charger and Light Array
- Be careful not to puncture the battery
- Be careful not to cut the Light Array Ribbon Cable
- Be careful not to cut the Qi Coil or its connecting wires

Step 7 — Battery Desoldering



- Grab a soldering iron. This is about to get even harder.
- Use your favorite desoldering method to remove the battery from the circuit board.
- BE CAREFUL NOT TO PUNCTURE THE BATTERY
 - DO NOT PUNCTURE THE BATTERY PROTECTIVE CIRCUIT

To reassemble your device, follow these instructions in reverse order.