



# Hisense Sero 7 Pro GPS Antenna Replacement

Replace the GPS antenna in your Hisense Sero 7 Pro.

Written By: Baochau Nguyen



---

## INTRODUCTION

This guide will assist the user in replacing the GPS antenna in the Hisense Sero 7 Pro tablet.

---






### TOOLS:

- [Spudger](#) (1)
  - [iFixit Opening Tools](#) (1)
-

## Step 1 — GPS Antenna



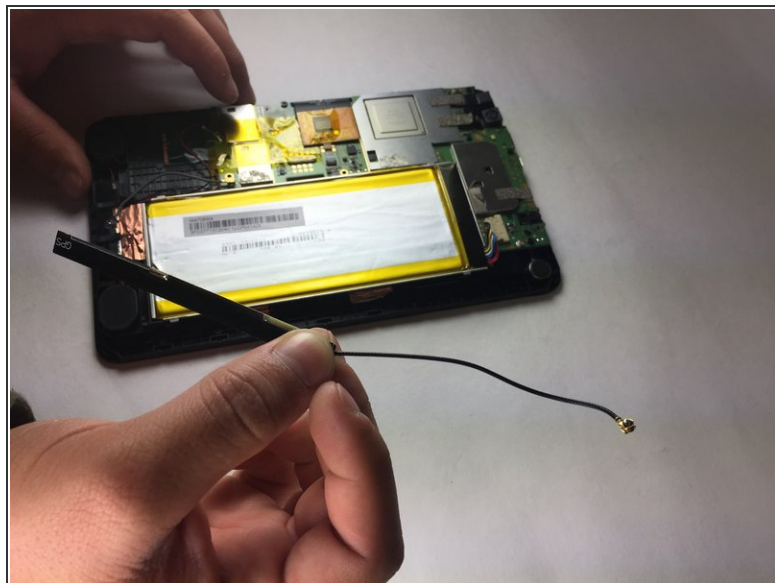
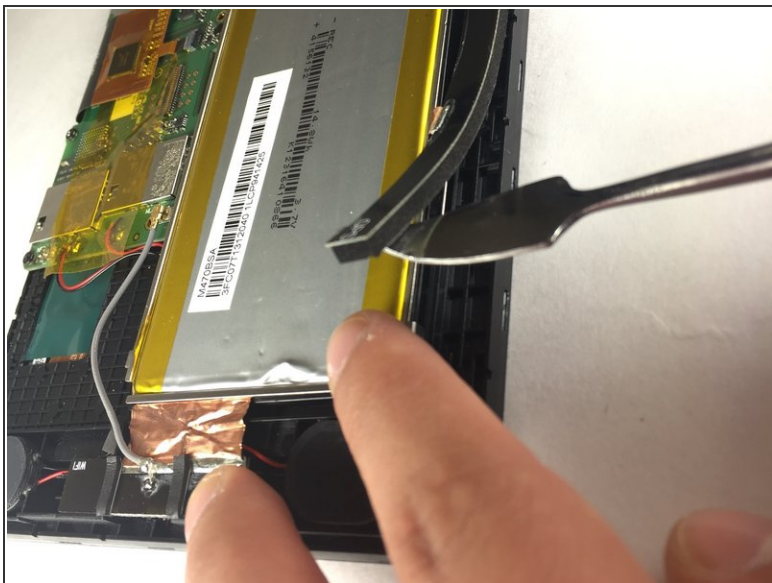
-  Turn tablet off before disassembling it.
-  Use caution when handling device if screen is cracked.
  - Using a plastic opening tool, pry open the back cover from the tablet.
-  An extra set of hands may be required.

## Step 2



- Pull the Wi-Fi antenna directly upwards to remove it from the motherboard.
- ⓘ Be gentle when disconnecting the antenna because it may damage the part it is attached to.

## Step 3



- Insert a metal or nylon spudger on the edge of the GPS satellite and begin separating it from the adhesive.
- Slowly peel the GPS from left to right as the GPS is clammy.

To reassemble your device, follow these instructions in reverse order.