



# Hisense Sero 7 Pro Battery Replacement

This guide will inform the user on the steps of replacing the battery on the Hisense Sero 7 Pro.

Written By: Baochau Nguyen








## TOOLS:

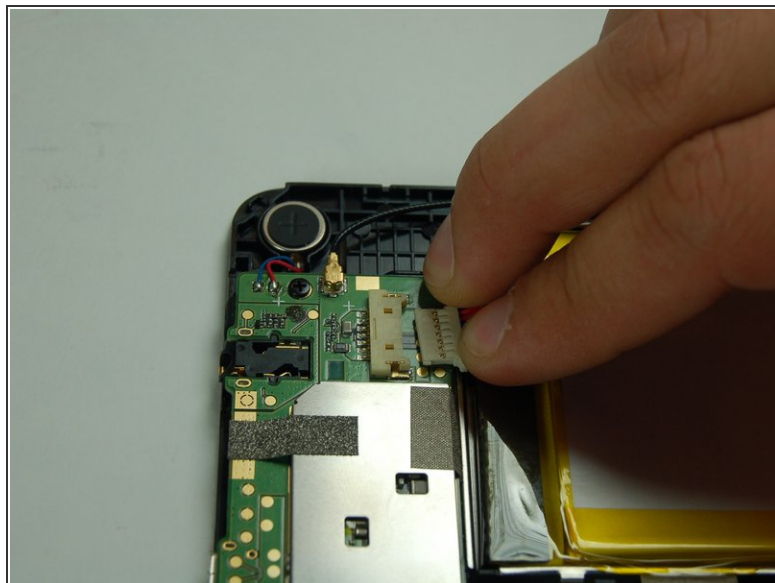
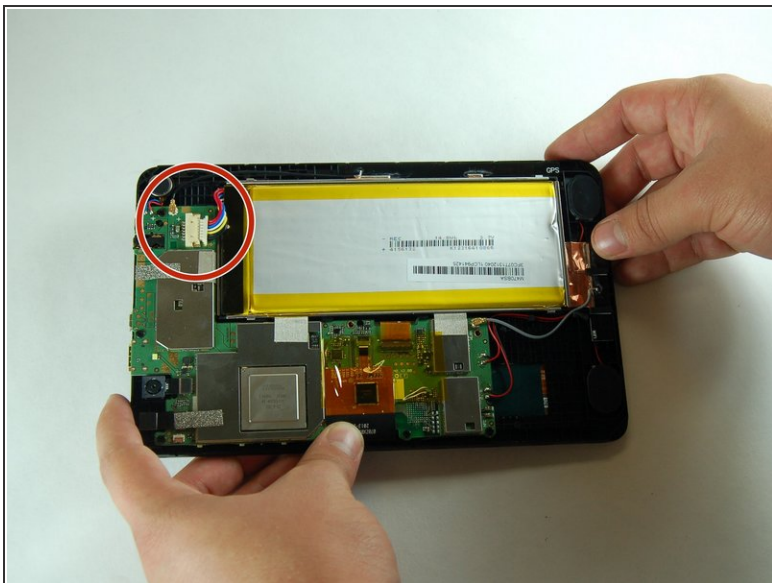
- [iFixit Opening Tools](#) (1)
  - [Tweezers](#) (1)
-

## Step 1 — Battery



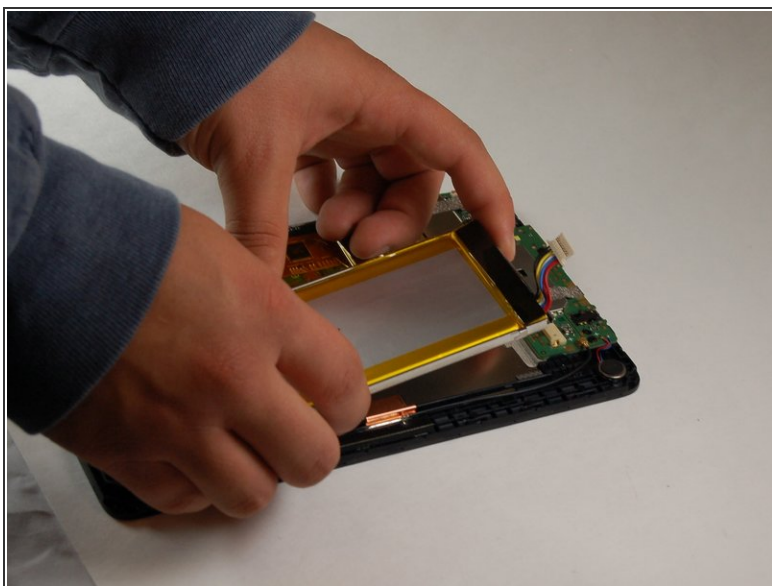
-  Turn tablet off before disassembling it.
-  Use caution when handling device if screen is cracked.
  - Using a plastic opening tool, pry open the back cover from the tablet.
-  An extra set of hands may be required.

## Step 2



- Use a spudger to disconnect the battery from the motherboard.

## Step 3



- Using a plastic opening tool, carefully place under one corner of the battery.
- Move around edges of the battery to lift it off of the tablet.
- Remove battery from tablet.

To reassemble your device, follow these instructions in reverse order.