



# Hisense Sero 7 Pro Rear Camera Replacement

This guide will show the user how to complete the rear camera replacement on the Hisense Sero 7 Pro tablet.

Written By: Baochau Nguyen










## TOOLS:

- [iFixit Opening Tools](#) (1)
  - [Spudger](#) (1)
-



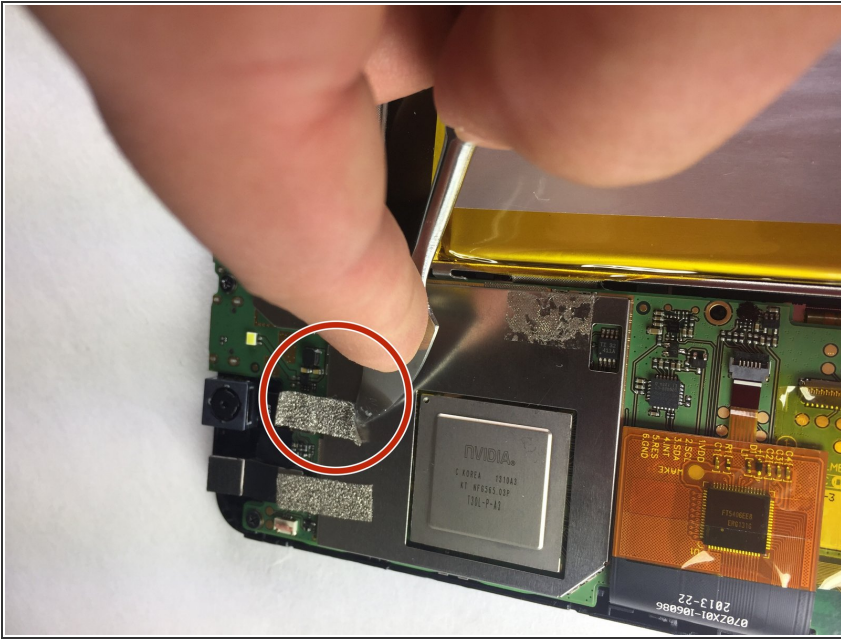
## Step 1 — Rear Camera



-  Turn tablet off before disassembling it.
-  Use caution when handling device if screen is cracked.
  - Using a plastic opening tool, pry open the back cover from the tablet.
-  An extra set of hands may be required.

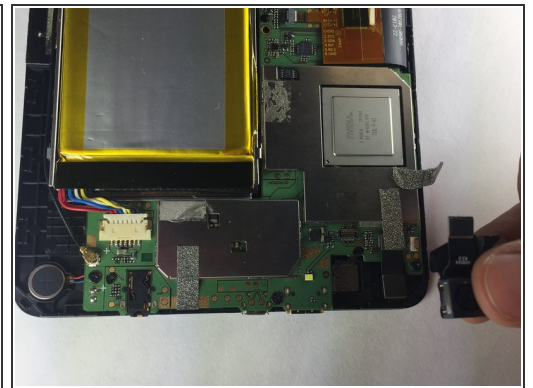
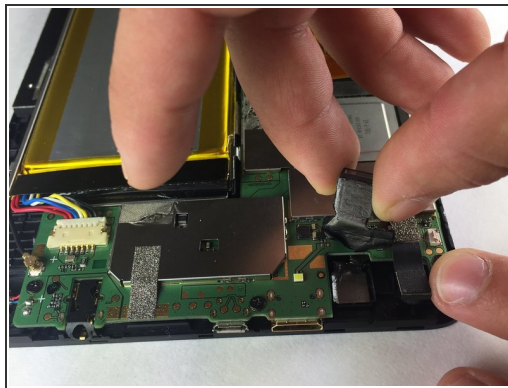
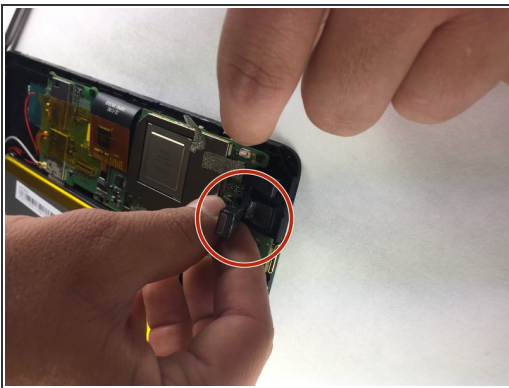


## Step 2



- Using a metal or nylon spudger, begin to peel the tape from the motherboard that it is attached to the camera.
- ⓘ If needed, the same steps can be applied to front camera.

## Step 3



- Pull the camera toward you to detach from the tablet.
- ⓘ Use caution when detaching camera from port.

To reassemble your device, follow these instructions in reverse order.