



# Hisense Sero 8 Charging Port Replacement

This guide demonstrates how to replace the charging port in the Hisense Sero 8.

Written By: Keanu



## INTRODUCTION

After extended use, the charging port may be worn down. If the device will not power on after charging, the charging port may be defective.



### TOOLS:

- [Phillips #00 Screwdriver](#) (1)
  - [Spudger](#) (1)
  - [iFixit Opening Tools](#) (1)
  - [Tweezers](#) (1)
-

## Step 1 — Charging Port



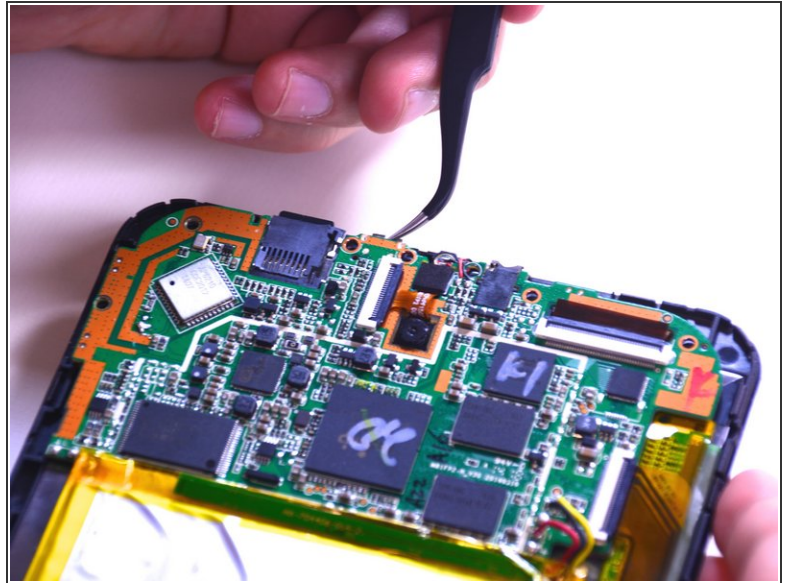
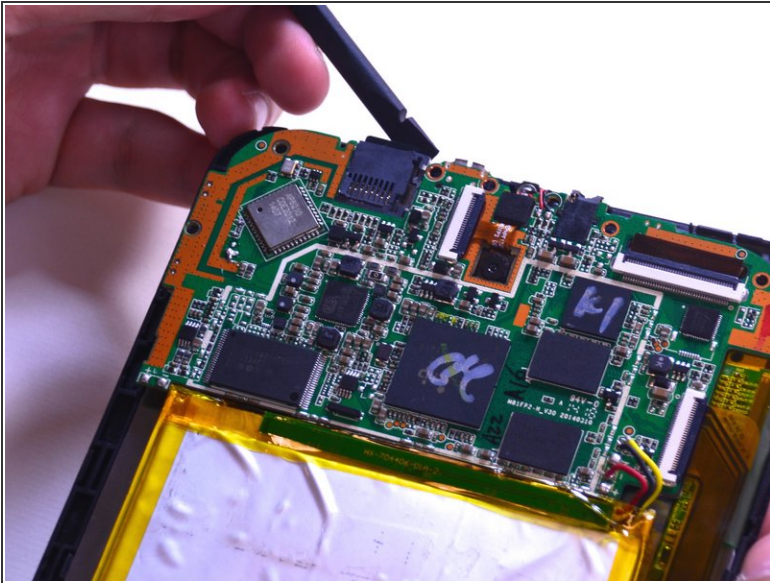
- Remove the back cover of the device using a combination of both plastic opening tools.
- Use your plastic opening tool pry open a corner of the device, then continue down the side of the device with the tool to completely open the device.

## Step 2



- Remove seven of the 4.43mm screws using the Philips #00 screwdriver.
- ⓘ It is not necessary to remove the bottom two 4.43mm screws that keep the speakers in place.

## Step 3



- Gently lift the motherboard up to extract the charging port out with the tweezers.

⚠ Be cautious not to disconnect any wires or ribbon cables.

To reassemble your device, follow these instructions in reverse order.