



Hitachi Refrigerator R-WB850P5M Door Closer Replacement

Replace broken right side door closer on Hitachi refrigerator.

Written By: SengChoy Liew



INTRODUCTION

The door closer will be broken if the fridge is not balanced properly. This guide show how to replace the broken door closer. The refrigerator will be heard working for long period of time in the day. Symptoms of door not close tightly caused by a broken door closer.



TOOLS:

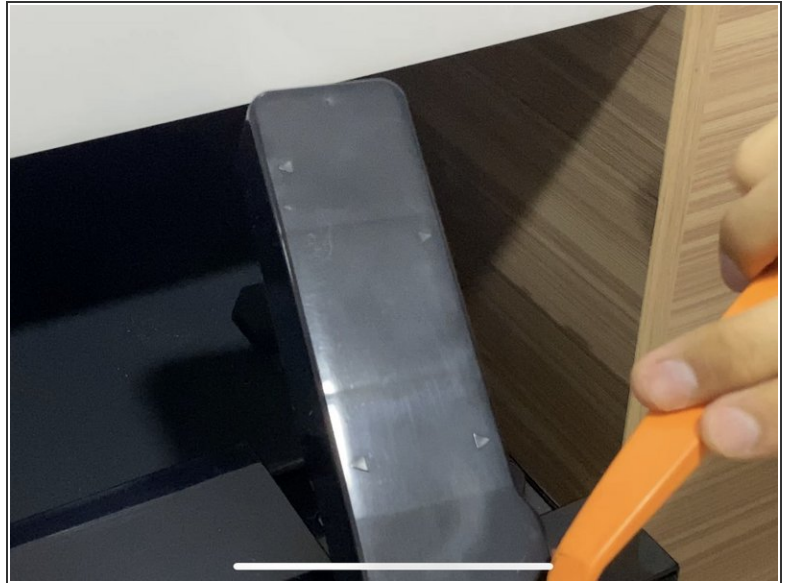
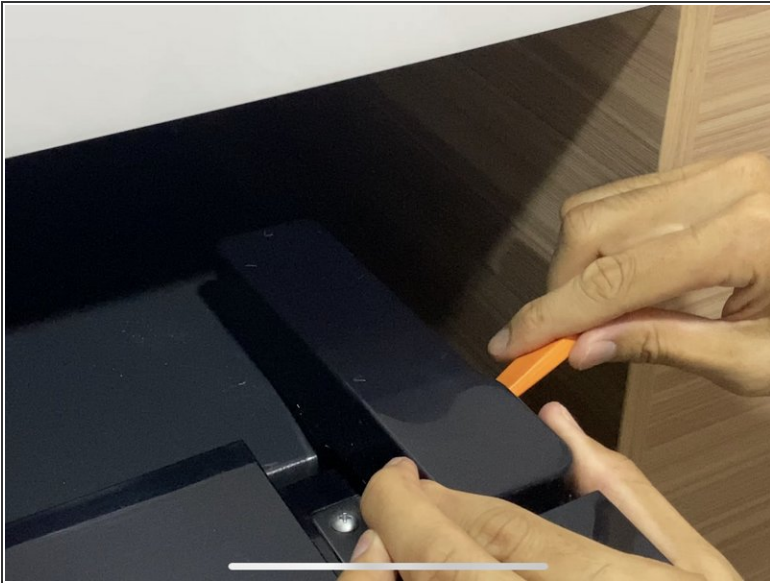
- [Phillips #2 Screwdriver](#) (1)
- [Heavy-Duty Spudger](#) (1)
- [10mm Socket](#) (1)
- [Adjustable Combination Square Ruler](#) (1)



PARTS:

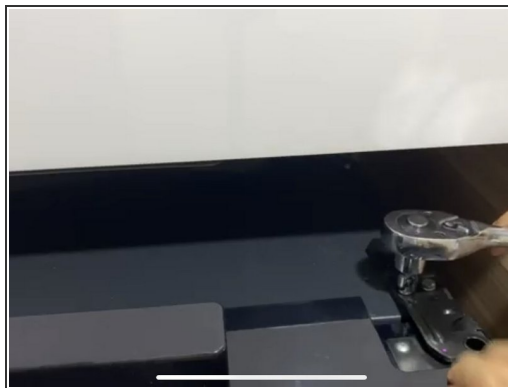
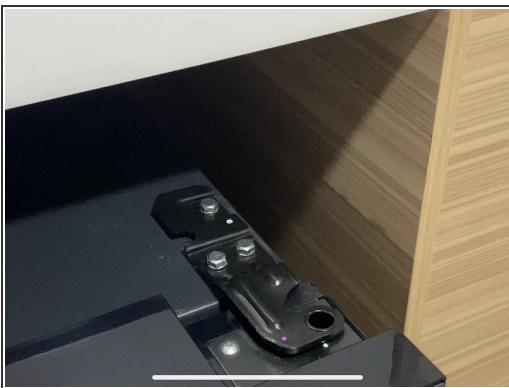
- [PTR-Z700AM-009](#) (1)

Step 1 — Remove the bracket that covers the hinge.



- Remove the plastic cover using a plastic opening tool.
- ⓘ Ply open the cover at the arrow indicated on the plastic cover.

Step 2 — Removing the three 10mm hex nuts



- Remove the three 10mm hex nuts
- Use a socket wrench to break loose the nuts and hand twist the nut to remove the nuts.
- ⚠ Break loose the nut only after knowing the depth of the magnetic strip. It helps properly align the door during installation later.

Step 3 — Getting the alignment of the door



- Measure the depth of the magnetic strip along the door trim.

⚠ Remove the bracket at the top once the depth of the magnetic strip has been determine. It helps to properly install the door back into place later.

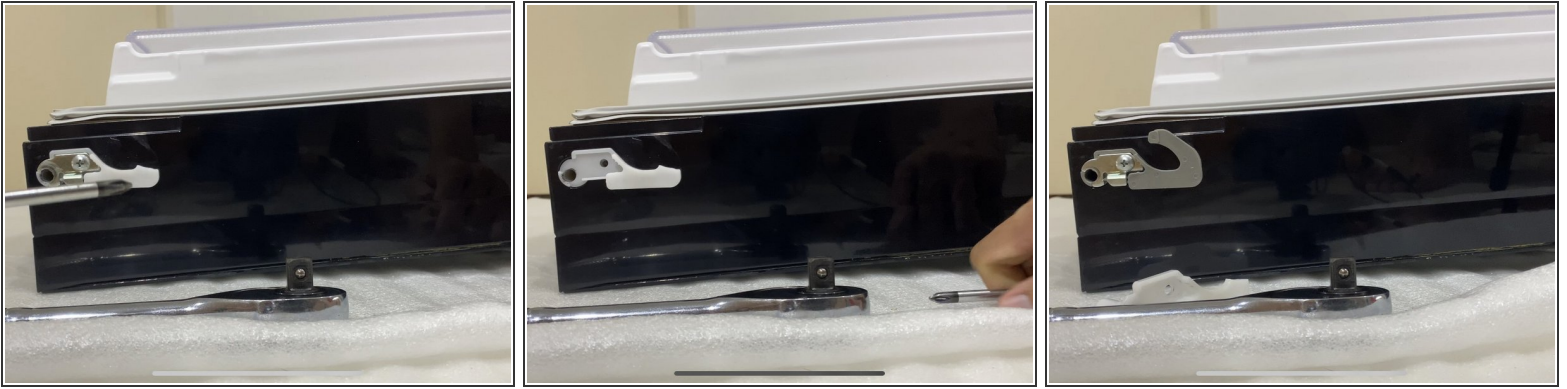
Step 4 — Removing the door



- ⓘ Remove the mounting bracket and open the door by 90degree before lifting it up.

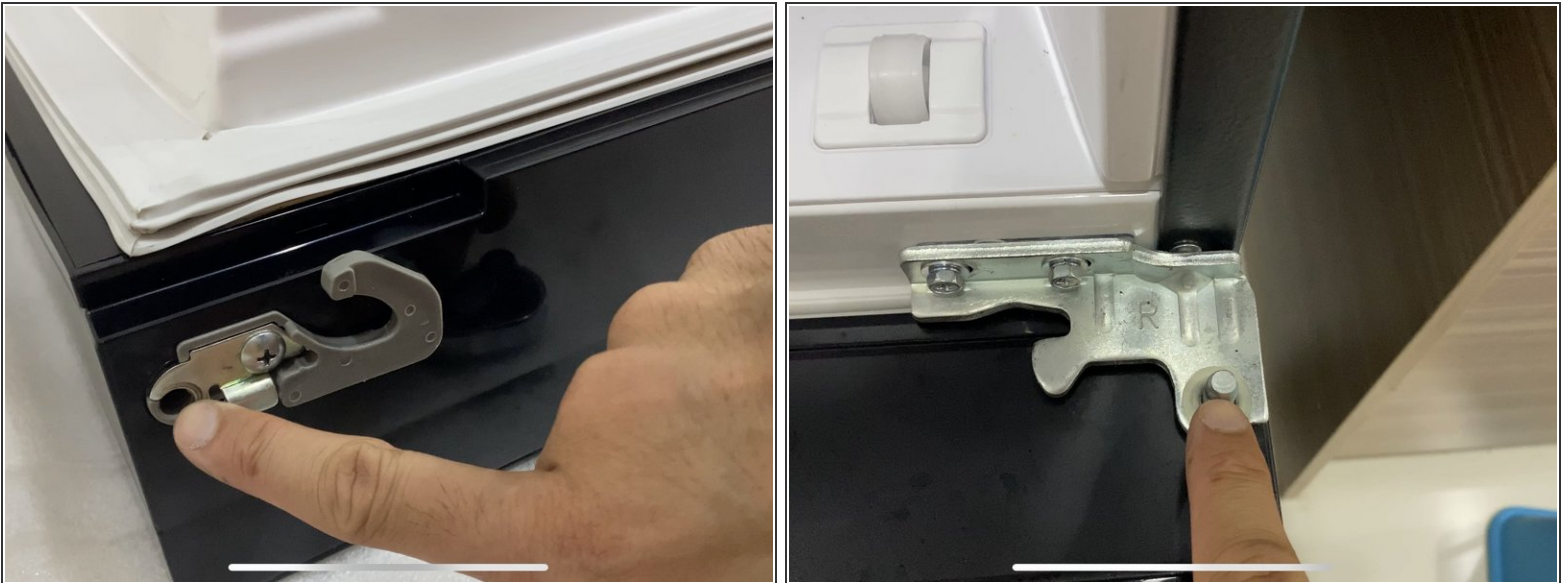
⚠ Set the door onto a soft surface to prevent the door from scratches.

Step 5 — Replace the broken door closer



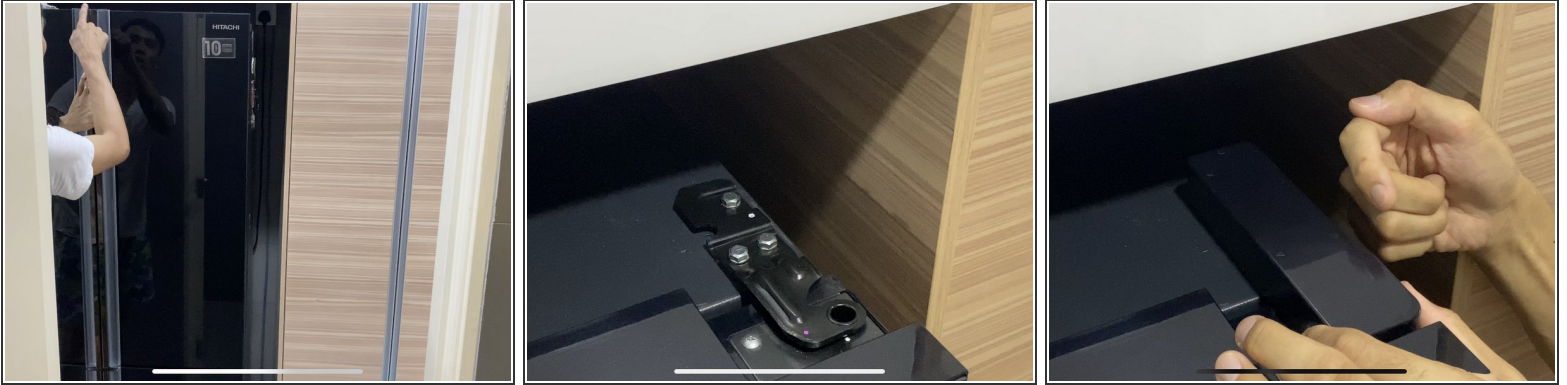
- Use a Philip #2 screwdriver to remove the metallic bracket.
- ⓘ Grab the broken plastic door closer by the side and pull it out from the hole. Replace the newly bought spare part and secure the metal bracket back to position.



Step 6 — Securing the door bracket



- Hold the door facing 90degree from the refrigerator.
- ⓘ Use the index finger to get the position of the hole on the door to be placed onto the bracket hinge at the refrigerator.

Step 7 — Security and alignment of the door



-  Check if the door with new door closer is level compare with the left door.
-  Check if the magnetic strip is properly aligned before tighten the three 10mm nut back into the bracket at the top.
 - Cover the plastic front the back and push it to the front covering the whole bracket.

To reassemble your device, follow these instructions in reverse order.