



Holmes Blizzard Fan Oscillation Gear Replacement

The Holmes Blizzard Fan has an oscillation feature that is activated by a button on the top of the motor housing. This guide will allow you to replace or grease the internal gears that make this feature function.

Written By: Mike Bolton



INTRODUCTION

In this guide, you will learn how to disassemble the majority of the Blizzard fan. By following these easy steps, you can clean, service, or replace several components of this fan.

TOOLS:

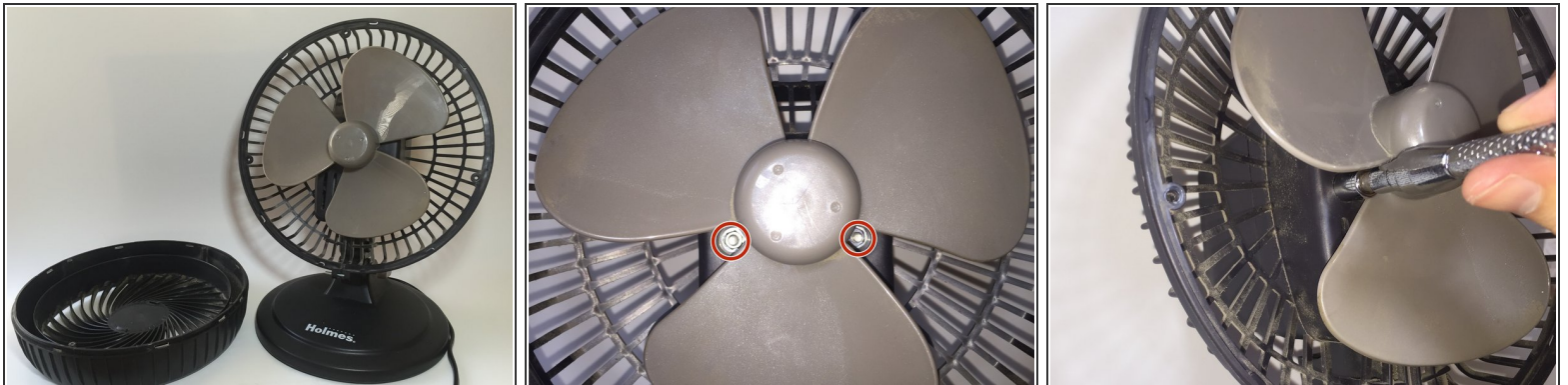
- [Phillips #2 Screwdriver](#) (1)
 - [7mm Socket](#) (1)
 - [Phillips #0 Screwdriver](#) (1)
 - [Flathead Screwdriver](#) (1)
-

Step 1 — Front Cage Removal



- Using a Phillips #2 Screwdriver, remove the 3 screws located on the back of the fan cage.
- Next, loosen the screw located on the bottom of the fan.
- ⓘ The bottom screw does not need to be removed, but only loosened about 3 or 4 turns.
- The front of the fan's cage is now able to be removed by prying the front away from the back.

Step 2



- Using a 7 mm socket and wrench, remove the 2 nuts that are behind the fan blades.
- ⓘ There is a washer located behind each nut. Be sure not to lose these.

Step 3 — Remove the Oscillation Button Screw



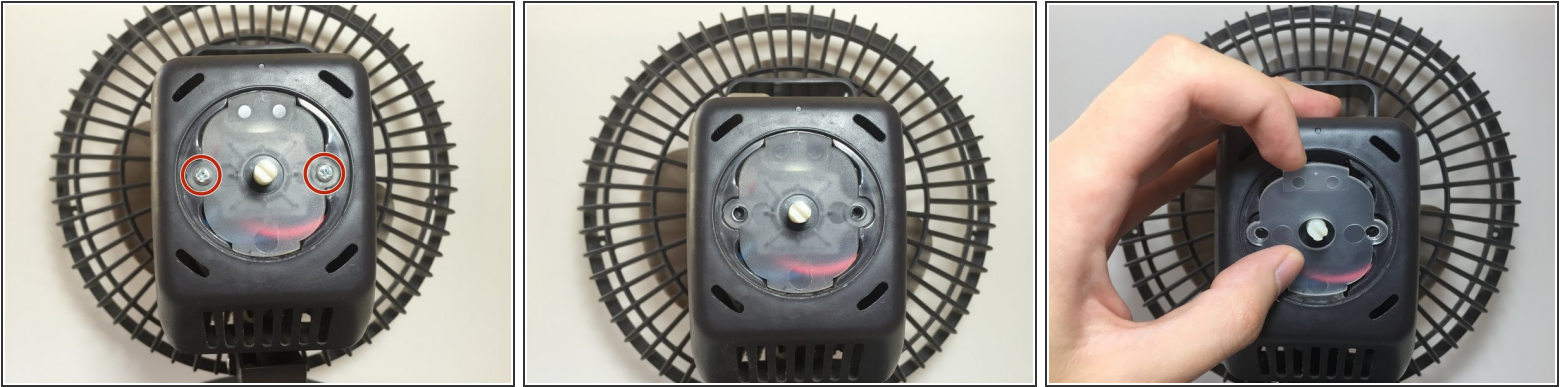
- On the top of the fan, there is a screw fastening the oscillation button to the gear train within the housing. Remove this screw with the Phillips #0 Screwdriver.

Step 4 — Housing Assembly Removal



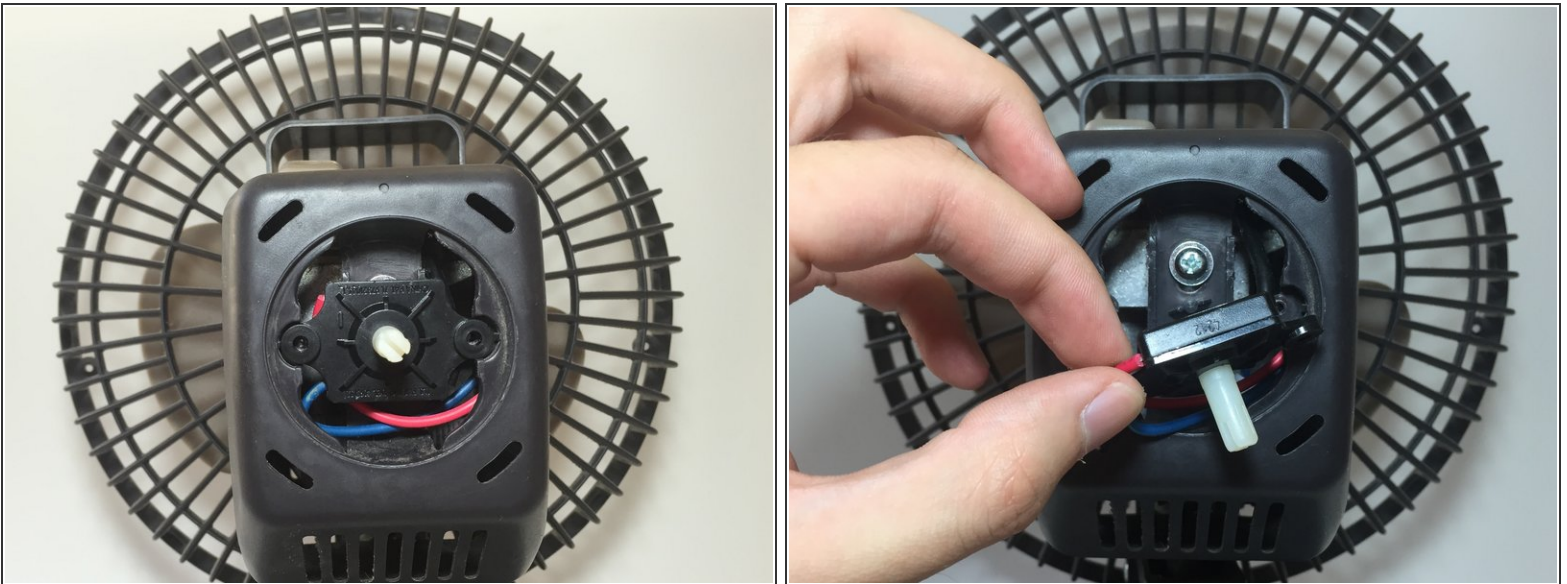
- The on/off and fan speed nob can be removed by simply pulling it away from the main housing.

Step 5



- Remove the 2 screws holding the clear plastic plate in place with a Phillips #2 Screwdriver.
- The plate is now free and can be taken out by hand.

Step 6



- The motor switch is also free and can be removed by hand to reveal a screw holding the housing assembly in place.
- ⚠ Be sure not to damage the wires on the switch during removal. While you do not need to be overly gentle during this step, excessive force could cause the wires to be pulled out.

Step 7



- Remove the screw that holds the housing assembly in place by using a Phillips #2 Screwdriver.

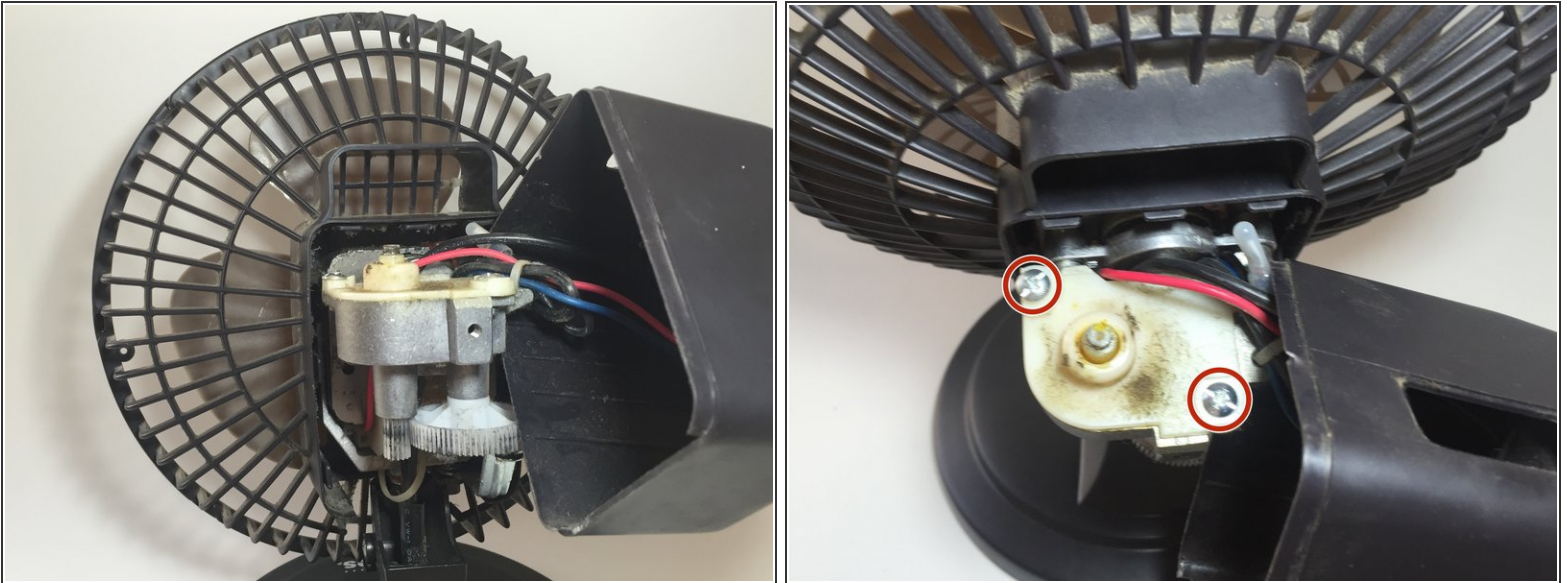
Step 8



- The housing assembly can now be pulled off and pushed to the side to reveal the fan motor and gear train.

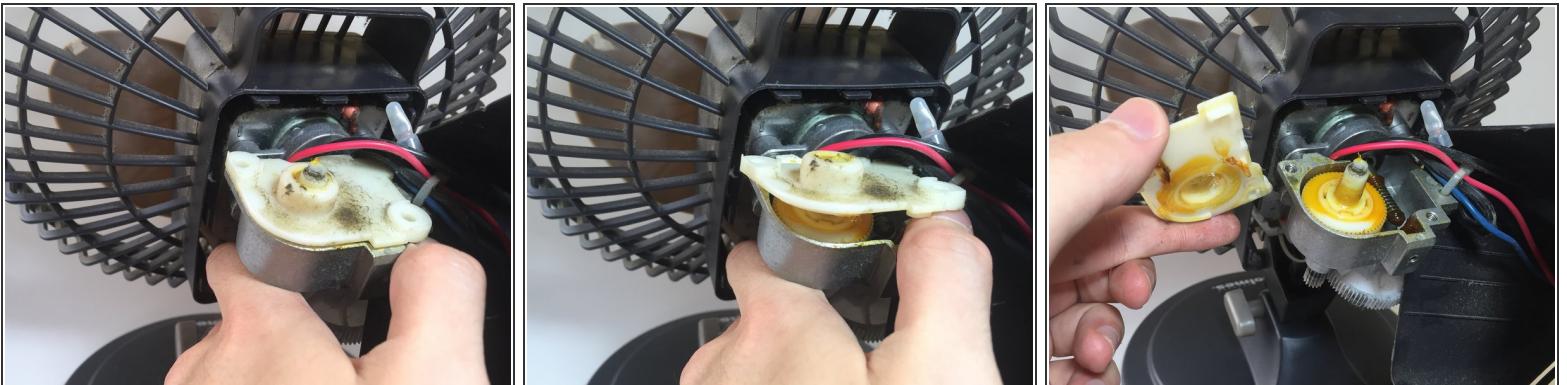
- ☒ The oscillation button the was unscrewed earlier will fall out of the housing assembly.

Step 9 — Oscillation Gear Removal



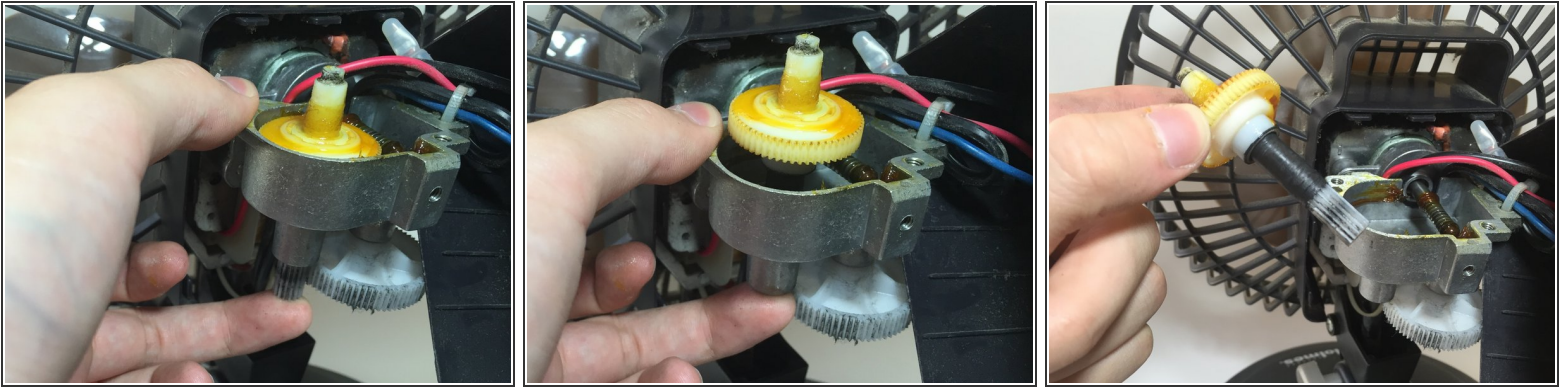
- Remove the 2 screws fastening the lid on the oscillation gear housing with a Flathead Screwdriver.

Step 10



- Using your thumb, the lid can easily be popped off to reveal the oscillation gear.

Step 11



- The oscillation gear is removed by pressing it up from the bottom.

Step 12



- The oscillation gear has been removed and fresh grease can be applied or it can be replaced.

To reassemble your device, follow these instructions in reverse order.