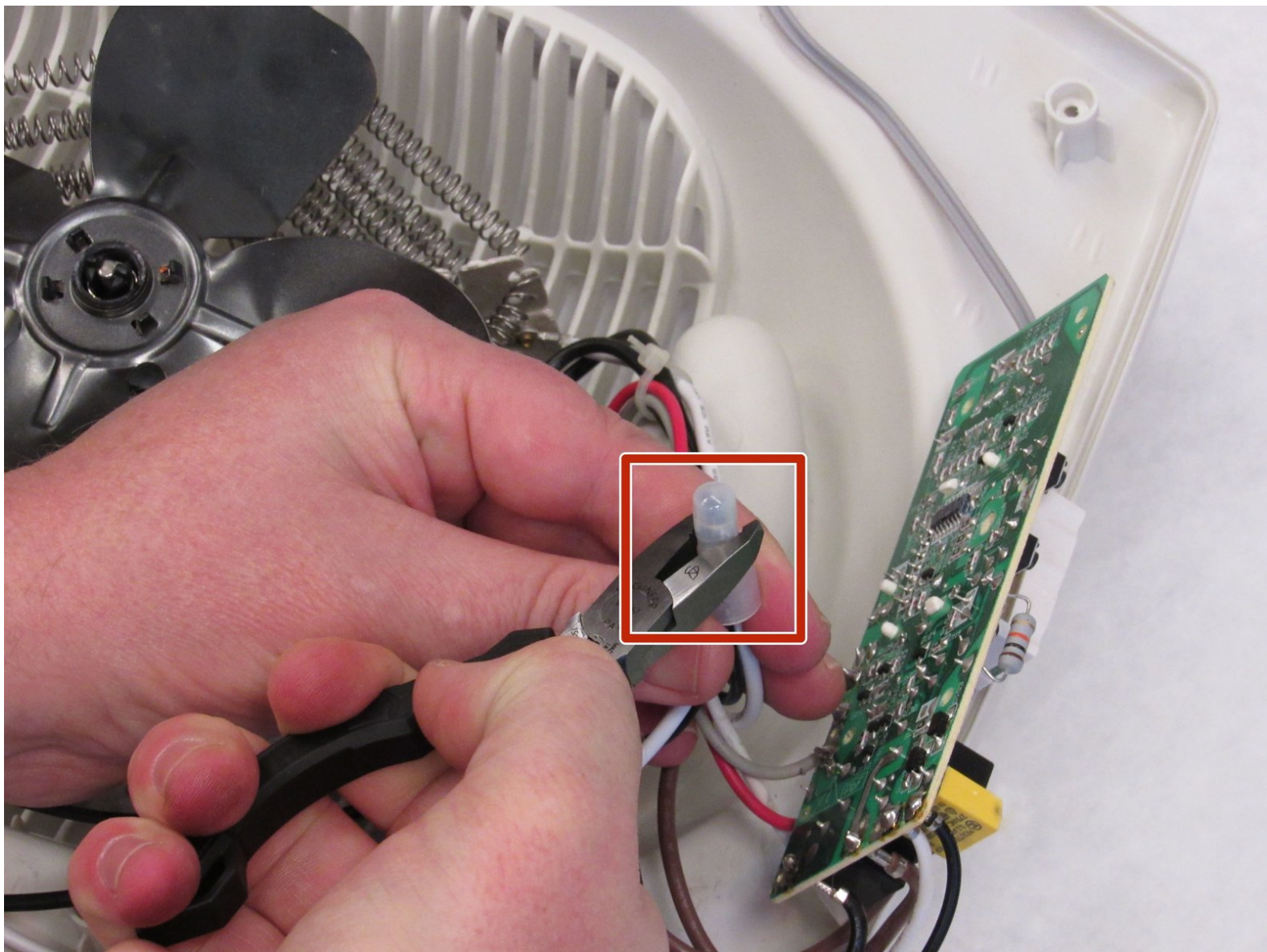




Holmes HEH8031 Power Cord Replacement

This guide will show how to safely remove and replace a faulty power cord on the Holmes HEH8031 space heater.

Written By: Deanna Jack



INTRODUCTION

This guide will show how to safely remove and replace a faulty power cord on the Holmes HEH8031 space heater.



TOOLS:

- [Phillips #2 Screwdriver](#) (1)
- [Wire stripper/crimping tool](#) (1)



PARTS:

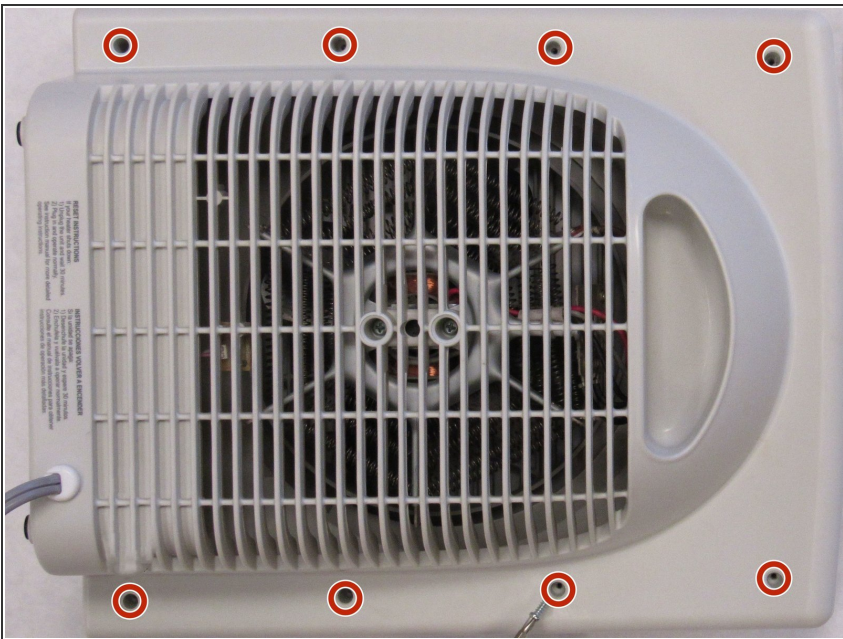
- [Wire Nut](#) (3)
- [Replacement Cord](#) (1)
- [Soldering Iron](#) (1)
- [Desoldering Braid](#) (1)

Step 1 — Housing



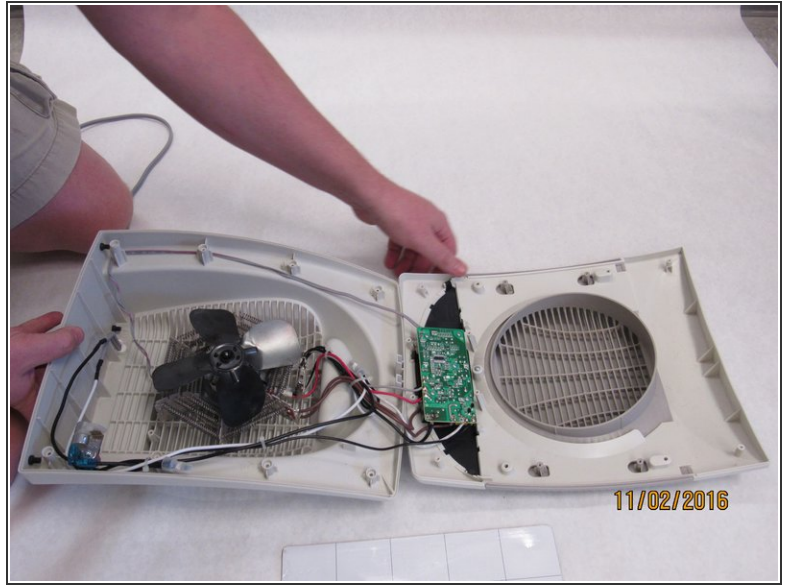
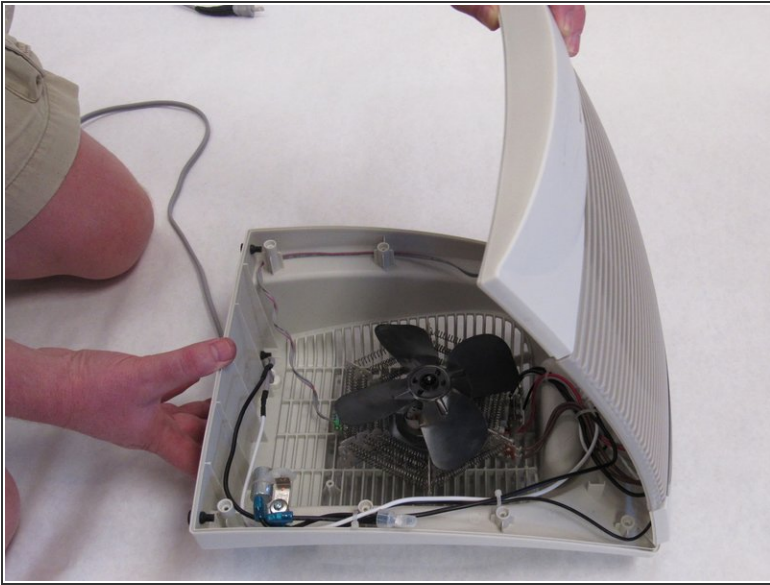
- Ensure the device is unplugged from the wall outlet.

Step 2



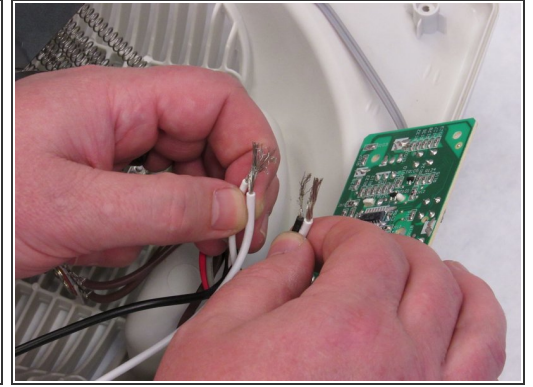
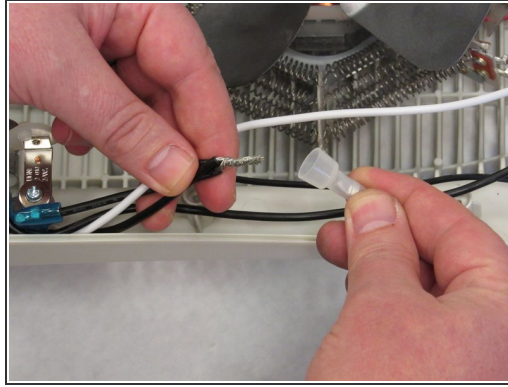
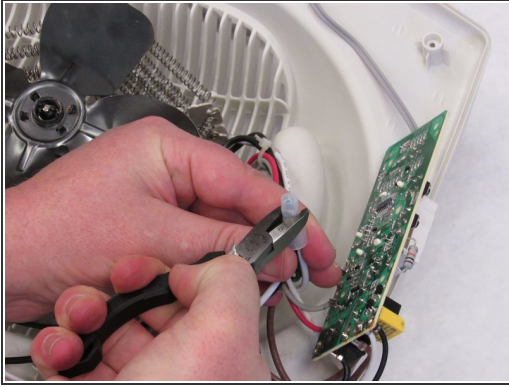
- Remove eight 12-mm Phillips #2 screws from the back cover.

Step 3



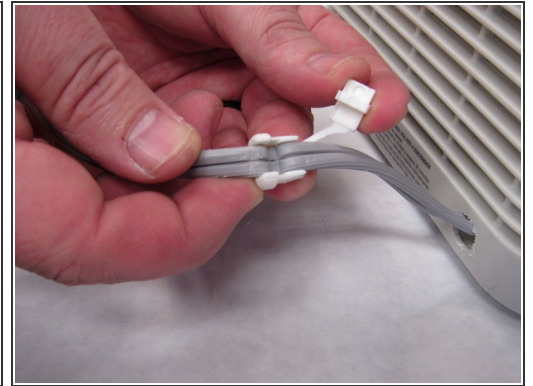
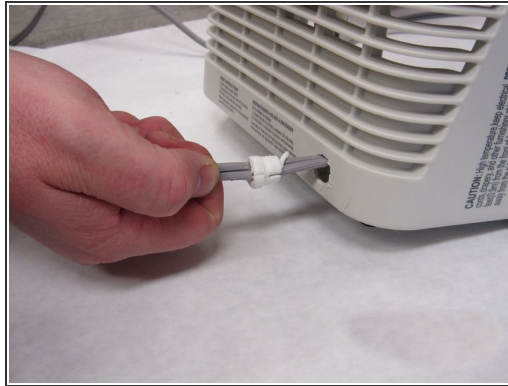
- Turn heater over so the controls are facing up.
- Lift the front housing away from the back of the fan and slowly fold the front housing back down to the floor.
- ⓘ Internal wires are connected to both halves of the housing. Be careful when separating the housing.

Step 4 — Power Cord



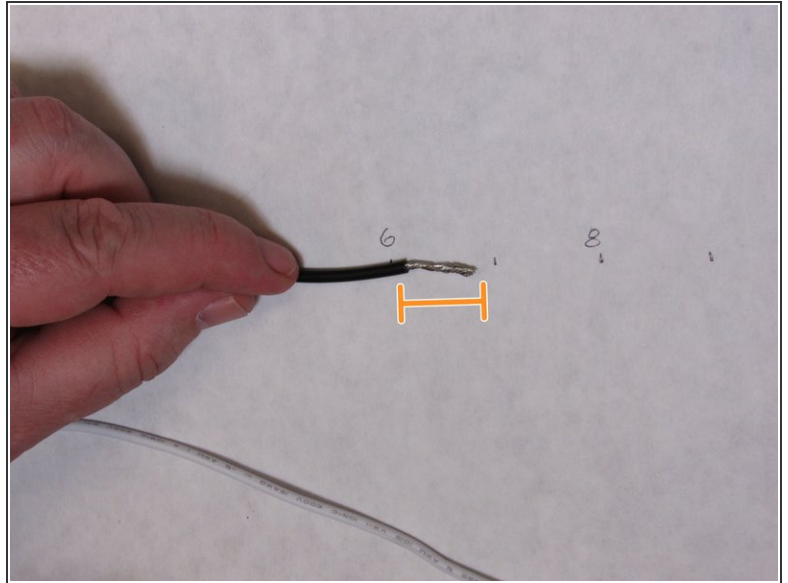
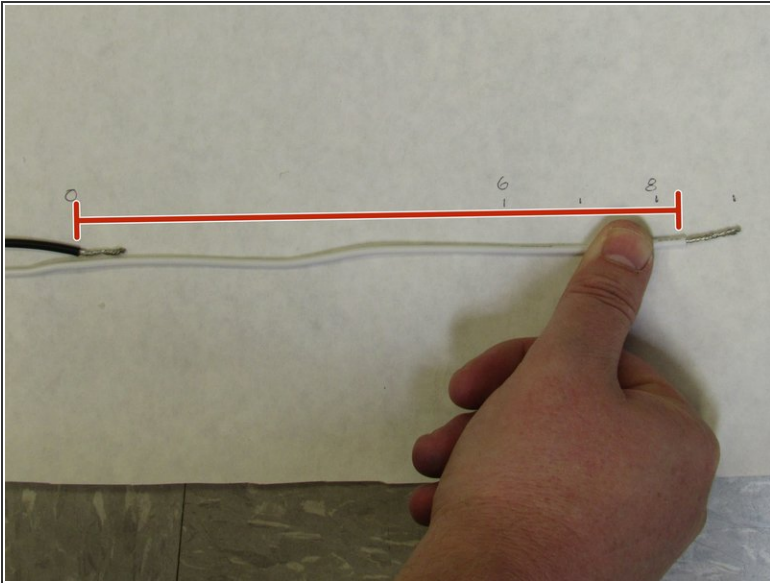
- Decrimp the wire nuts from both wire connections.
- Remove wire nuts to expose wire strands.
- Separate all connected wires.

Step 5



- Pull on the cord from the outside of the heater with great finesse. At the same time, push the cord clamp out of the housing from the inside.
- Separate the two halves of the cord clamp and remove from cord.

Step 6



- Prepare the replacement cord by cutting the negative branch (black) at least 8 inches shorter than the positive branch (white).
- Strip at least 3/4 inch of insulation from the cord to expose bare wire.
- Twist wire ends to form a tight braid.

To reassemble your device, follow these instructions in reverse order.