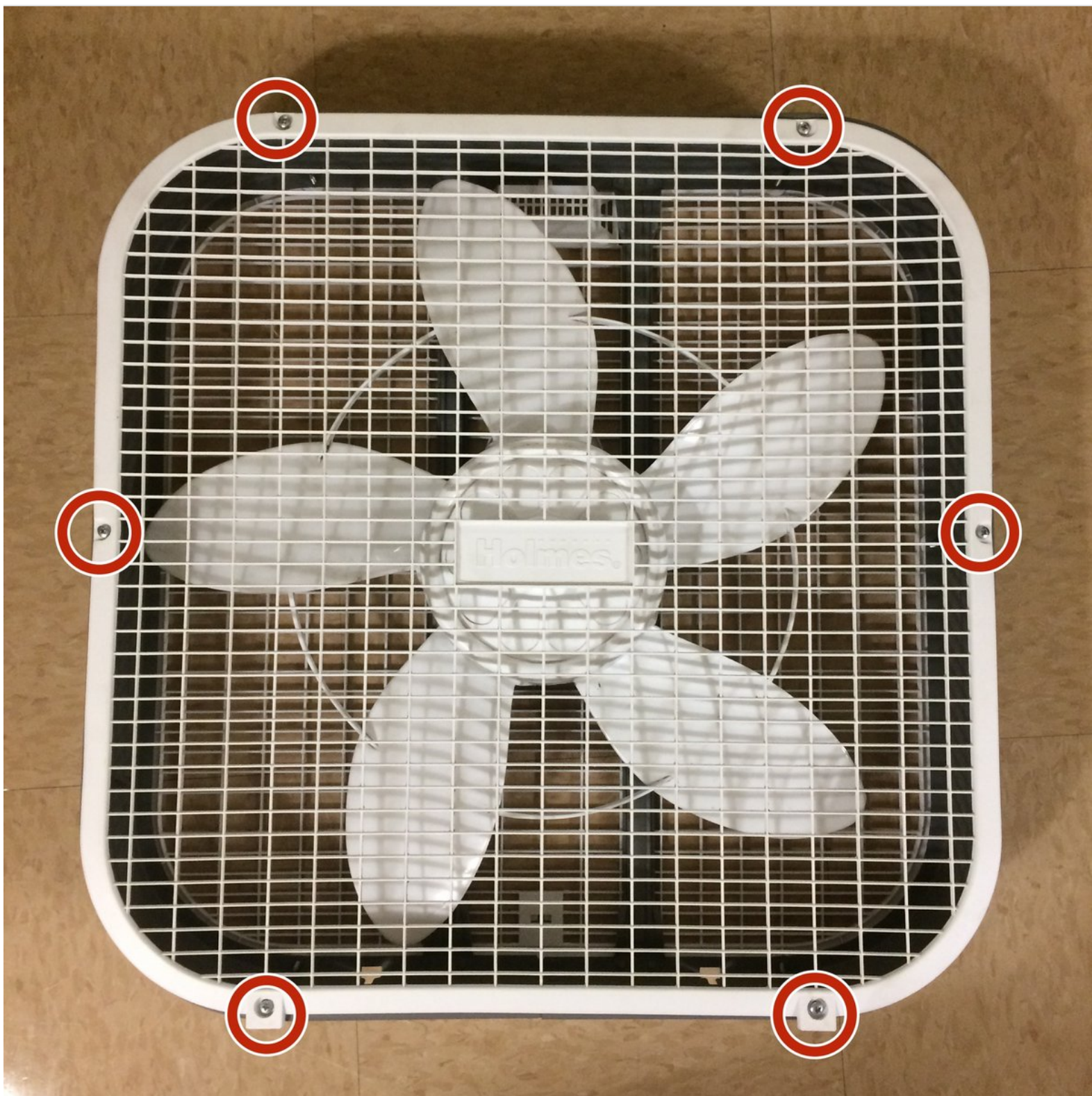




Holmes box fan motor replacement

A quick and easy guide to replace the motor of your Holmes box fan

Written By: Max Cossalter



INTRODUCTION

This is a very simple guide that will help you dissassemble and replace the motor of your Holmes box fan, this process is easy and it only requires a screwdriver and a new motor to install.



TOOLS:

- [Screwdriver](#) (1)



PARTS:

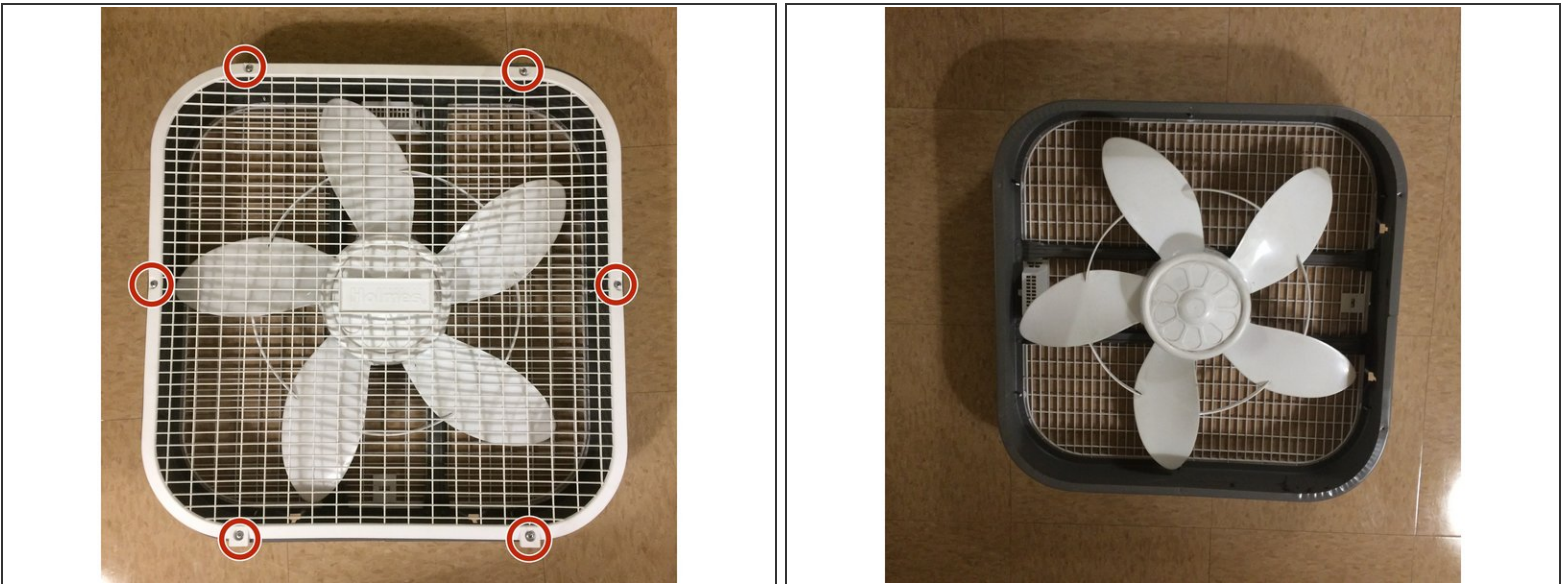
- [Replacement Motor](#) (1)

Step 1 — Motor



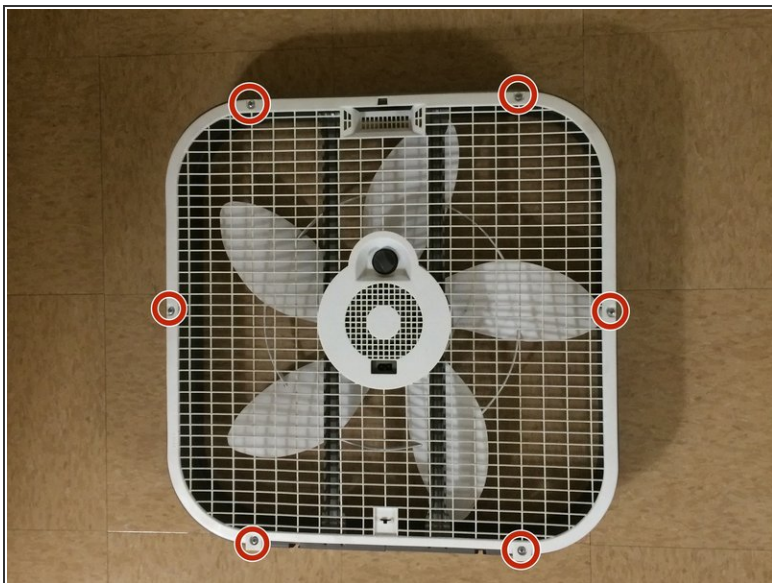
- The first step is to make sure you unplug your fan from the outlet.
- Make sure you also unplug the power cord from the back of the fan.

Step 2



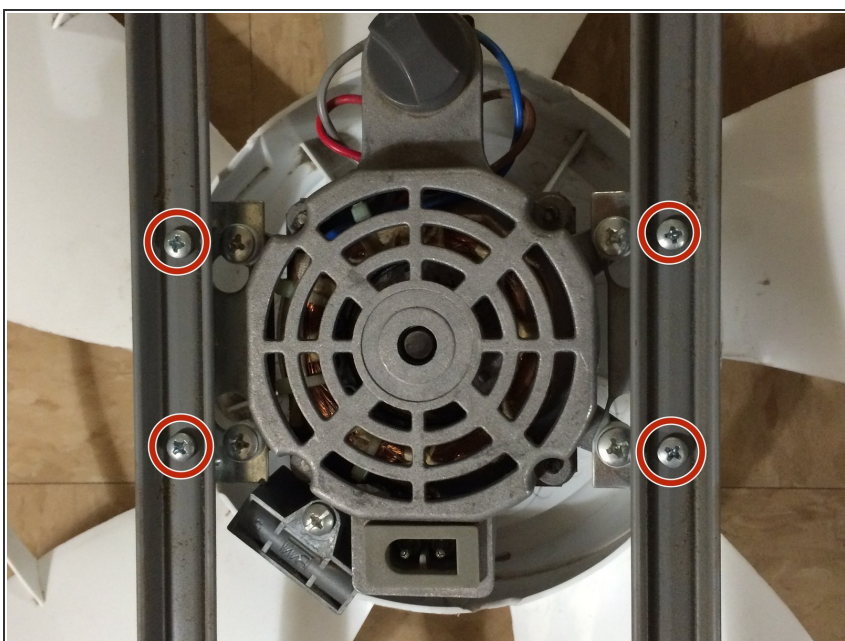
- Now that your fan is unplugged, lay it flat with the brand label facing upward.
- Next is to remove the front cover.
- Remove the six screws from the perimeter of the cover in order to remove the front cover.

Step 3



- Next is the back cover.
- Flip over the fan so you have access to these six screws.
- Remove the six screws from the perimeter of the cover in order to remove the back cover.

Step 4



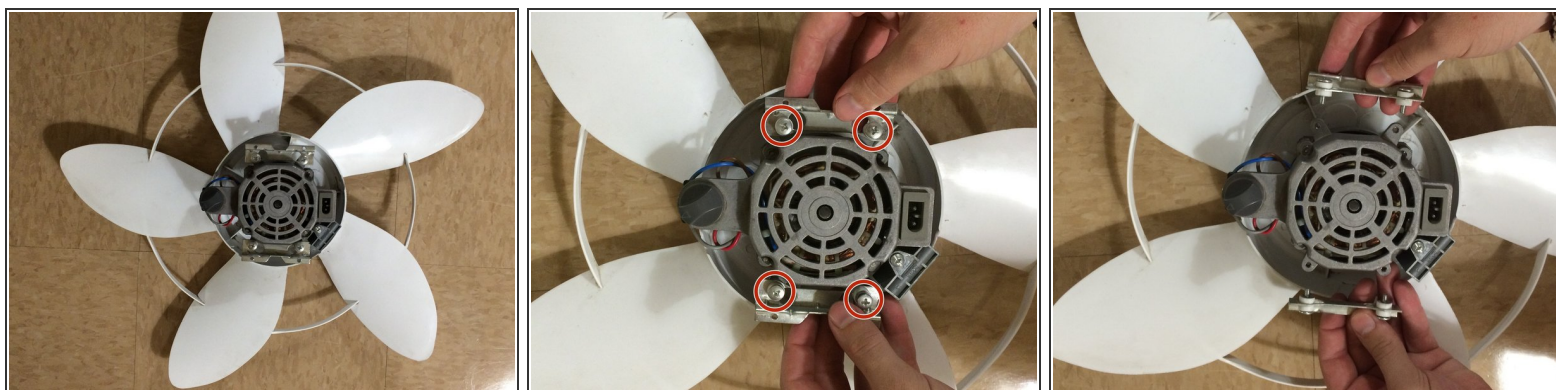
- Remove these four screws in order to remove the motor and fan blades from the housing.

Step 5



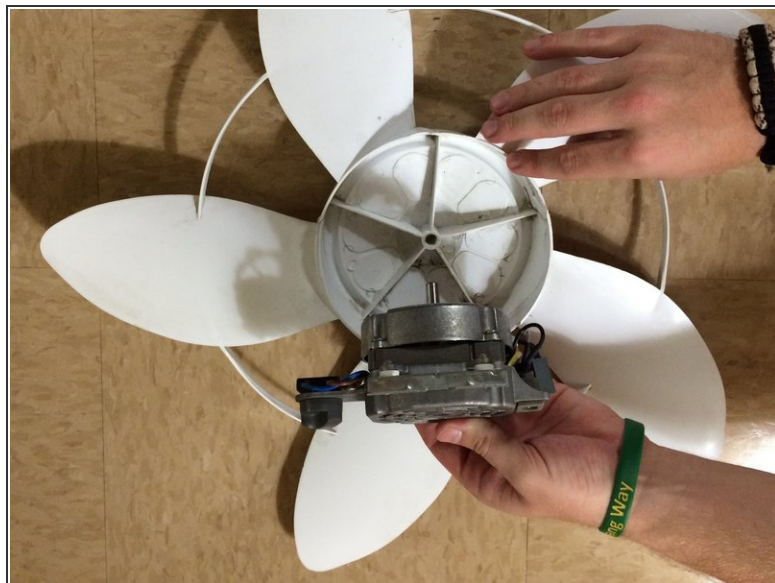
- The housing should now be able to lift away from the motor and fan blade.

Step 6



- The next step is to remove the mounts that held the motor to the housing.
- Remove these four screws to remove the mounts.

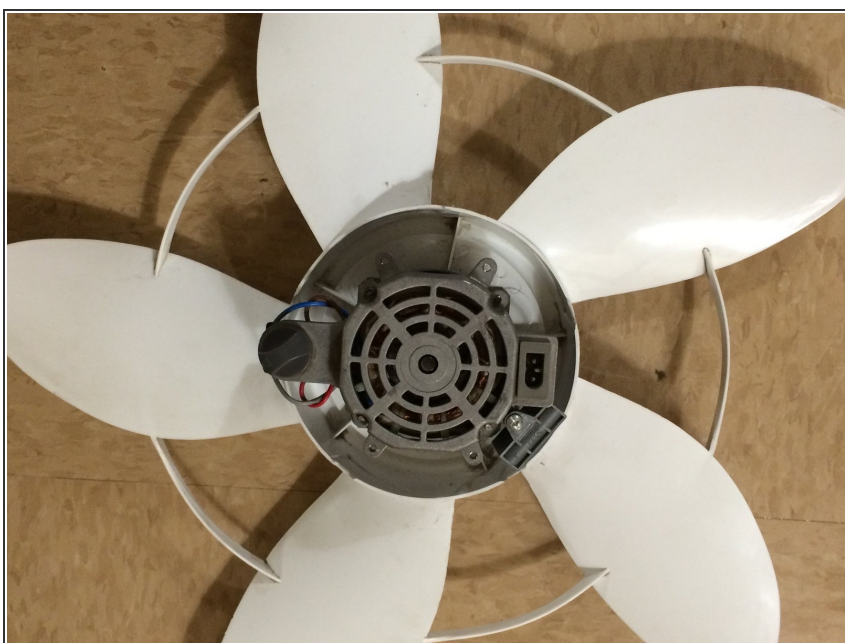
Step 7



- Now you are able to remove the motor from the fan blades.

⚠ Be careful, if you used your fan recently the motor may be quite hot.

Step 8



- Now you can insert your new motor and you are done!

To reassemble your device, follow these instructions in reverse order.