



Homelite UT44172 Blades Replacement

This guide is a detailed guide on replacing the shear blades of the UT44172 Homelite Cordless Grass Shear.

Written By: Adam soto



INTRODUCTION

If you are having trouble with blades not cutting do from dulling, looseness, or they are broken the following will be an insightful guide for changing them out.



TOOLS:

- [Phillips #2 Screwdriver](#) (1)



PARTS:

- [Homelite Shear Blade](#) (1)

Step 1 — Removing Screws



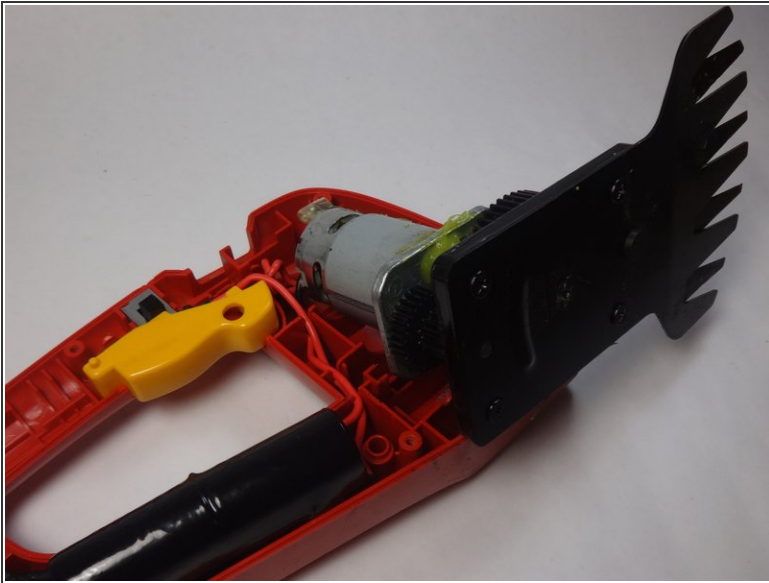
- Locate and remove the six 1.5 cm long screws marked on the picture from the shear with a Phillips head #2 screwdriver.

Step 2 — Removing Faceplate



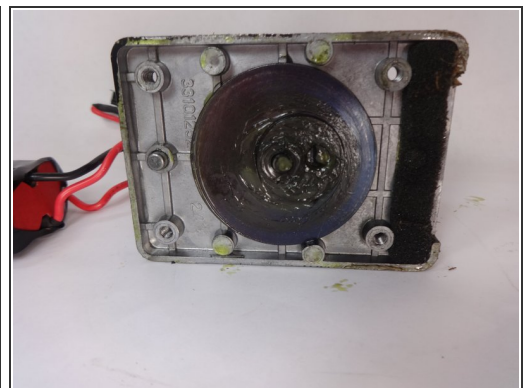
- Remove face plate by lifting it away from the body of the mechanism, to expose inner mechanisms.

Step 3 — Exposing Blade Components



- Lift motor and blade away from opposite cover being careful not to remove entire mechanism from the face plate. The idea is to simply expose the screws on the bottom of the blades.
- Locate and remove the four 1.0 cm long screws at the bottom of the blade again using the #2 Phillips Screwdriver.

Step 4 — Replacing Blades



- Remove blade by pulling away from gears and motor and replace with new blades.

⚠ Be careful handling the blades. They are sharp.

To reassemble your device, follow these instructions in reverse order.