



# Homelite UT44172 Operating Switch Replacement

The Guide will be an overview on how to properly replace the Operating Switch on the Homelite 4.8v Shear.

Written By: Adam soto



## INTRODUCTION

If the you are having problems turning on the shear or the operating switch seems too loose, this guide might be useful for replacing the part.



### TOOLS:

- [Phillips #2 Screwdriver](#) (1)



### PARTS:

- [UT44172 Operating Switch](#) (1)

## Step 1 — Opening Device



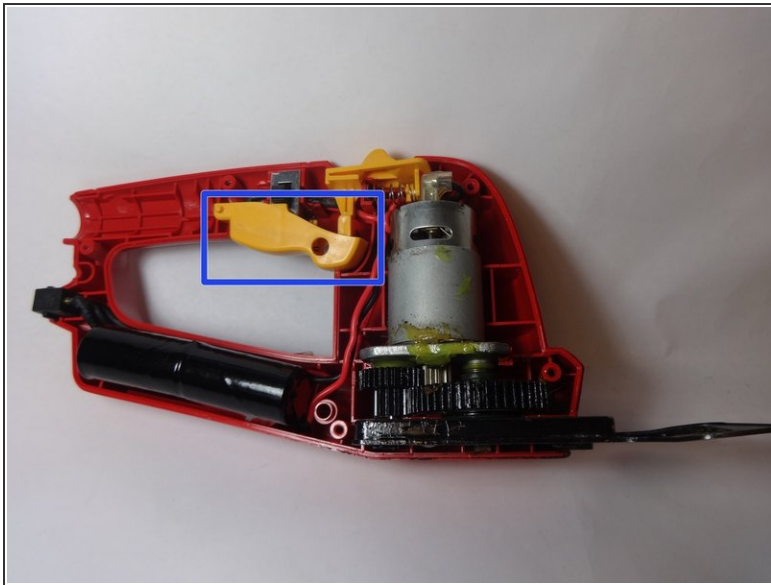
- Locate and remove the six 1.5 cm screws marked on the picture from the plastic casing with a Phillips head screwdriver.

## Step 2 — Remove Faceplate



- Remove face plate by lifting it away from the body of the mechanism, to expose inner mechanisms.

### Step 3 — Switch Removal



- Locate and remove the operating switch by pulling it away from the body of device.

### Step 4 — Spring Replacement



- If Spring seems deformed or broken then pull spring away from switch and replace similarly.
- ⓘ When reinserting spring be careful the wires don't get caught in the spring.

To reassemble your device, follow these instructions in reverse order.