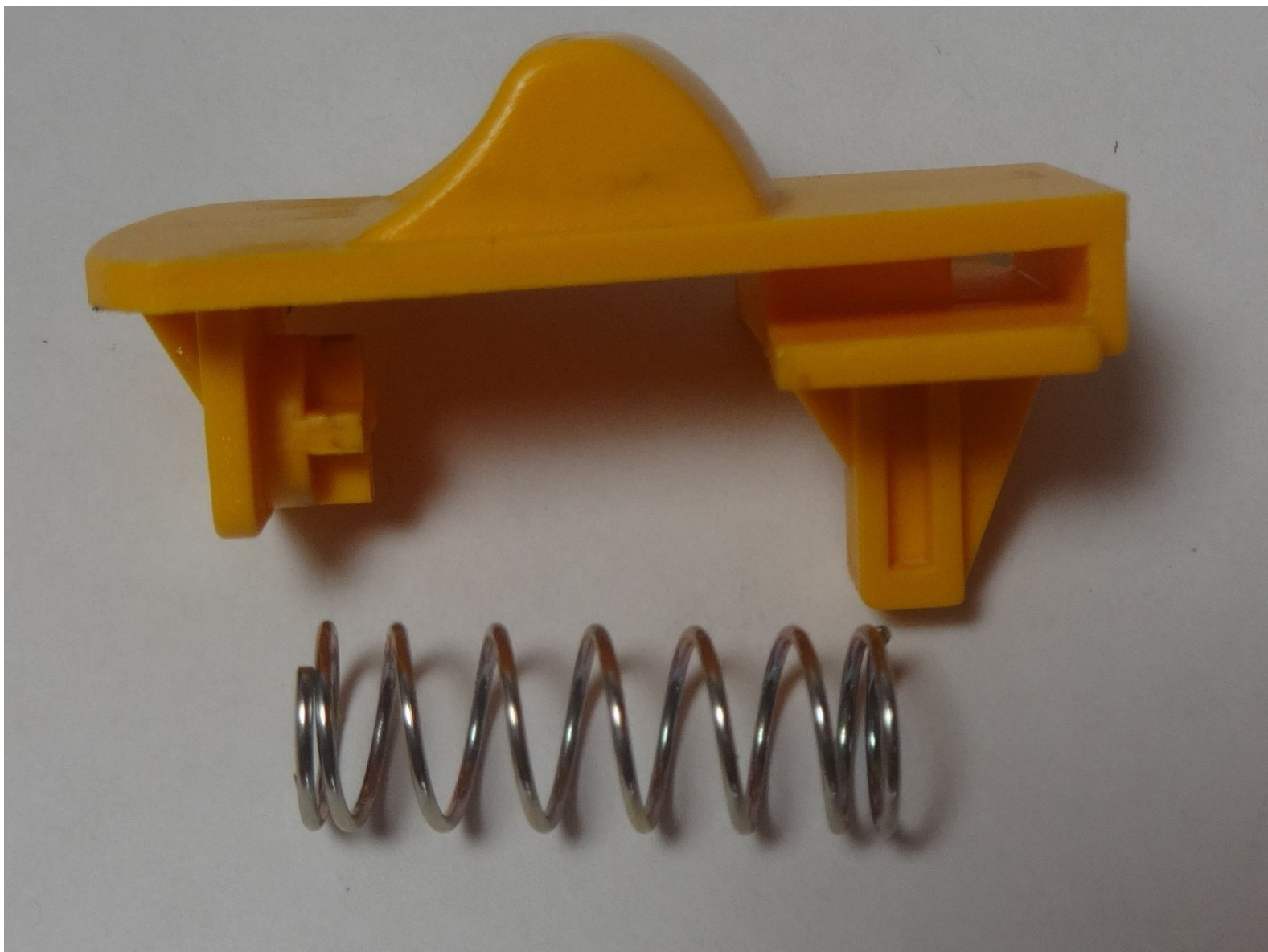




Homelite UT44172 Safety Switch Replacement

This guide is an overview on how to replace the Safety Switch on the Homelite 4.8 Volt Shear UT44172.

Written By: Daniel Endericavillacis



INTRODUCTION

The safety switch must be pressed simultaneously with the operating switch for the blades to move. If the safety switch is either stuck or loose then it or its spring might need to be replaced.



TOOLS:

- [Phillips #2 Screwdriver](#) (1)



PARTS:

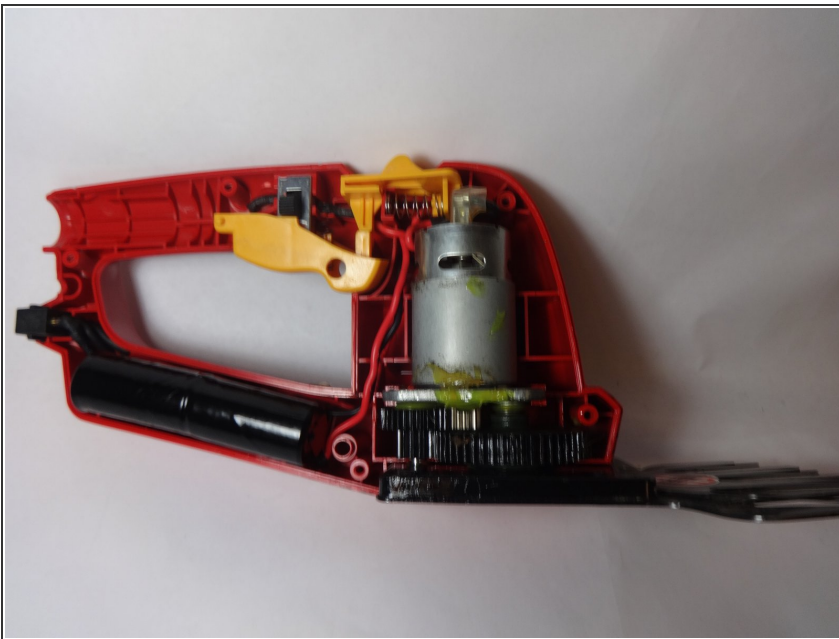
- [Ut44172 Cordless Grass Shear Safety Switch](#) (1)

Step 1 — Opening the device



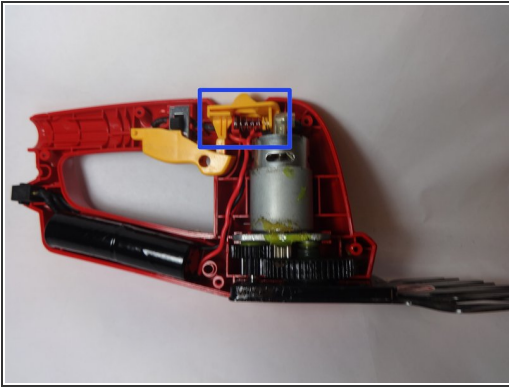
- Locate and remove the six 1.5 cm screws marked on the picture from the plastic casing with a Phillips head #2 screwdriver.

Step 2 — Remove Faceplate



- Remove faceplate, to expose inner mechanisms.

Step 3 — Switch Removal



- Locate and remove the safety switch by pulling it away from the body of device. Be careful not to lose the spring which is under pressure and might fly out during removal.

Step 4 — Spring Replacement



- Inspect both the spring and switch to see if either is deformed or damaged. If so replace with new part.
- ⓘ When reassembling be careful inner wires don't get caught in the spring.

To reassemble your device, follow these instructions in reverse order.