



# Honeywell HY-254-TGT Front Panel Replacement

Remove the front panel to allow access to buttons and electronics.

Written By: Darian Maxwell



# INTRODUCTION

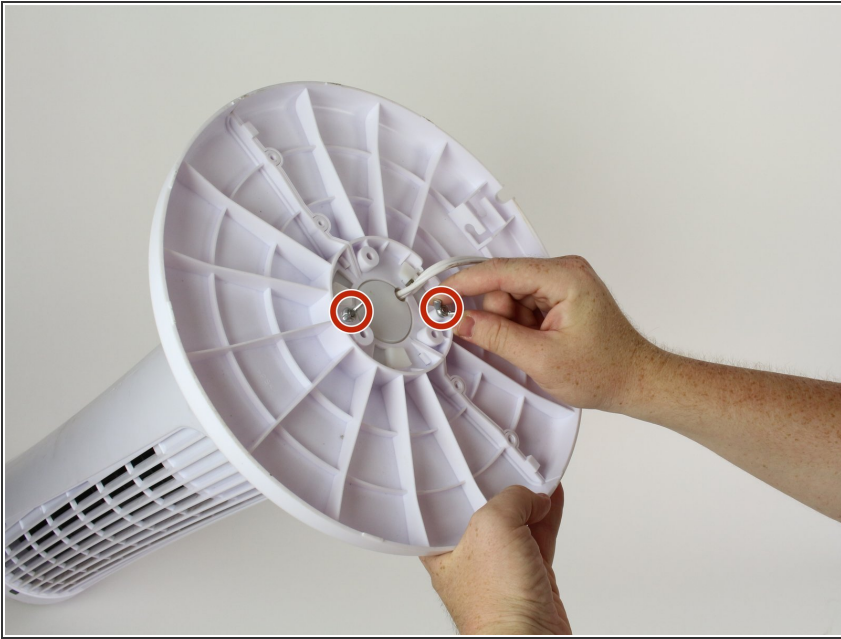
Follow this guide to remove or repair any of the parts related to the front panel.



## TOOLS:

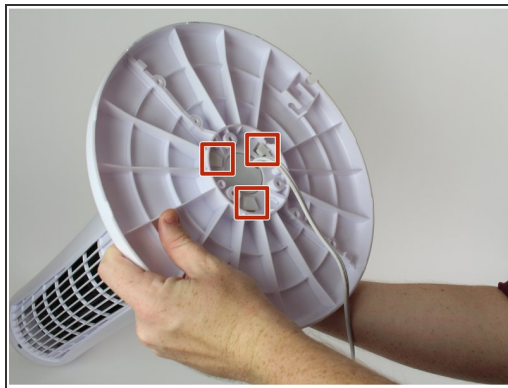
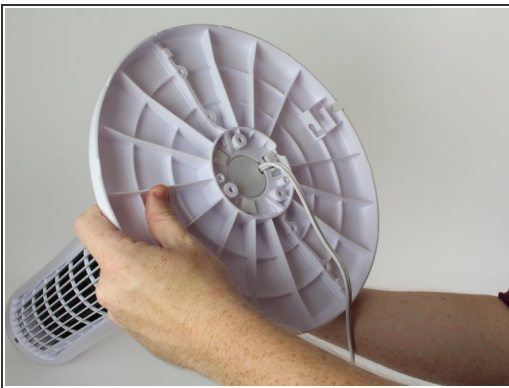
- [Phillips #1 Screwdriver](#) (1)
  - [Phillips #2 Screwdriver](#) (1)
  - [iFixit Opening Tools](#) (1)
-

## Step 1 — Plastic Assembly



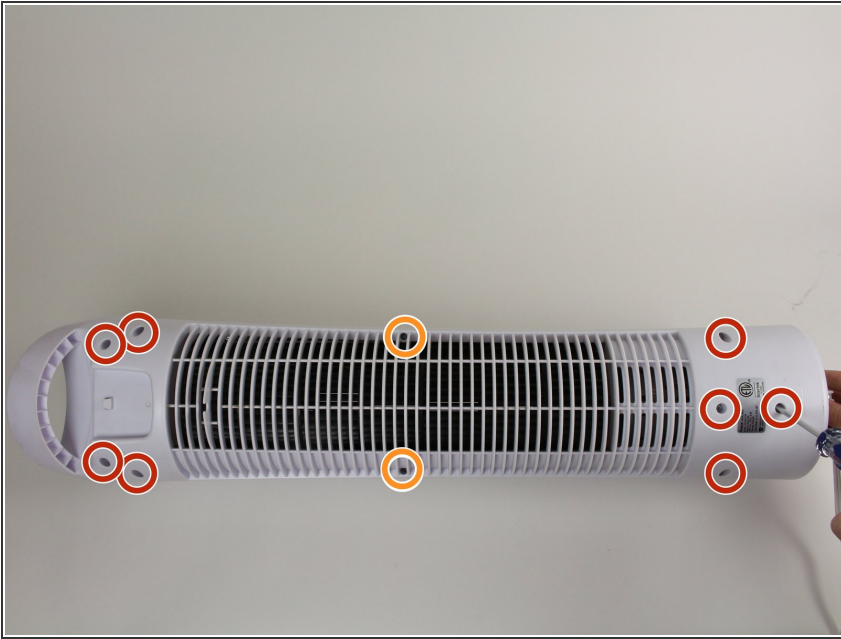
- Remove the two 3/4" wing screws on the bottom of the fan by rotating them counter-clockwise.

## Step 2



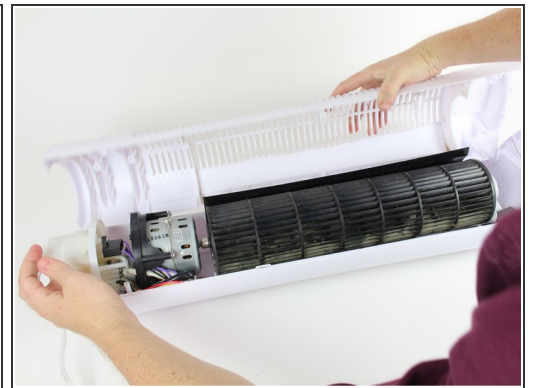
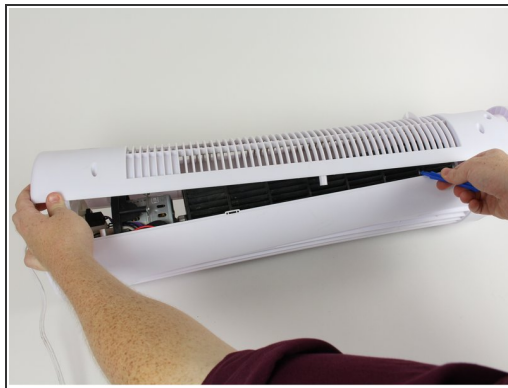
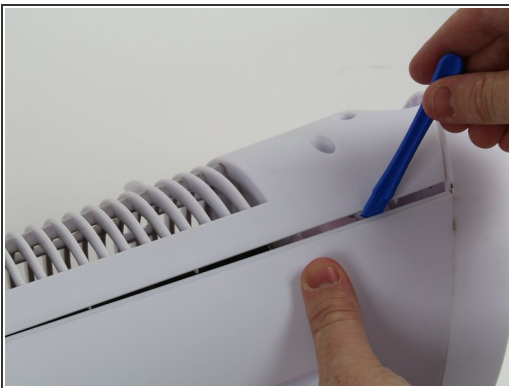
- Twist the fan base counter-clockwise until the pins line up as shown.
- Pull the base straight towards you to remove it, feeding the wire through the base.

### Step 3



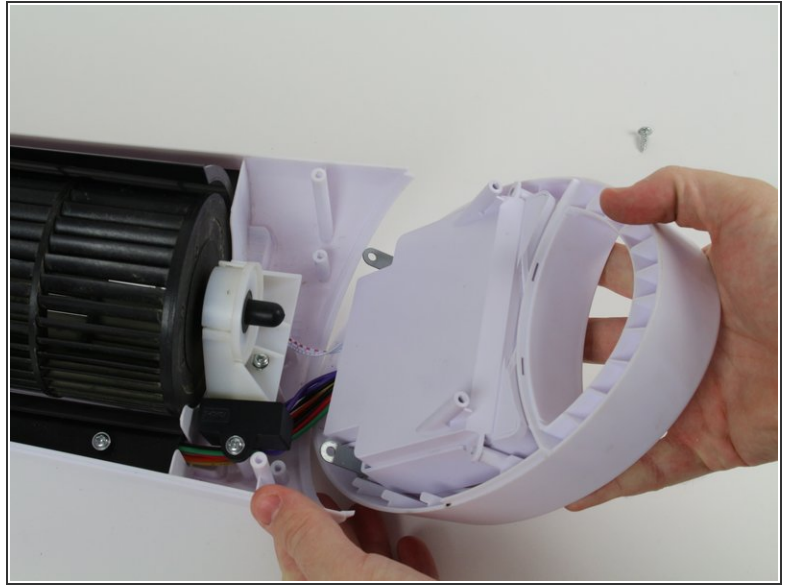
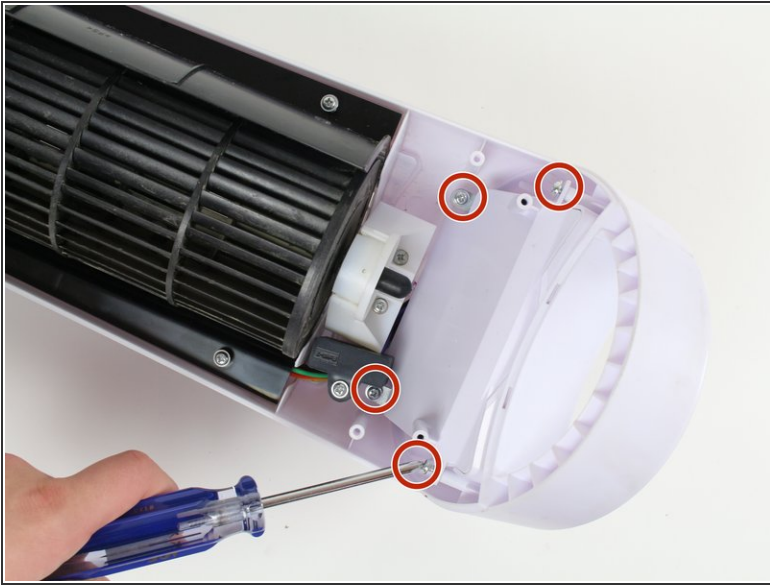
- Remove all of the marked 1/2" Phillips #02 screws on the backside of the fan
- Remove the two marked 3/4" Phillips #02 screws in the middle.

### Step 4



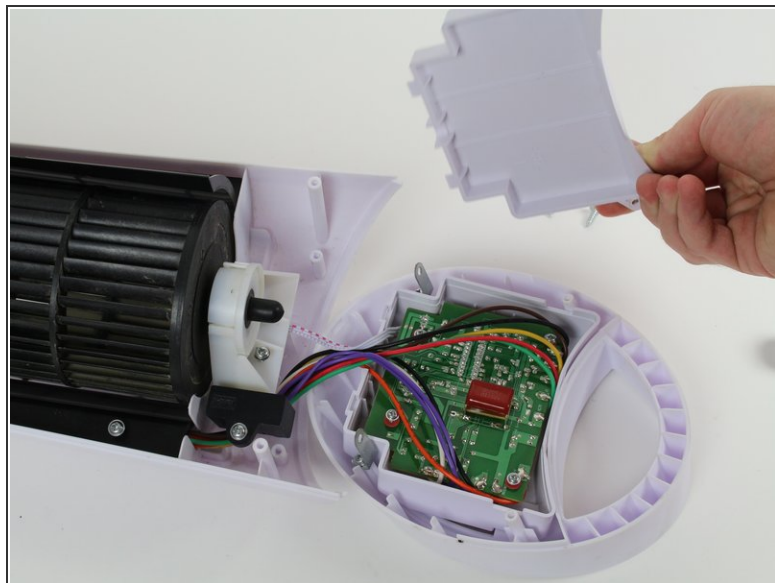
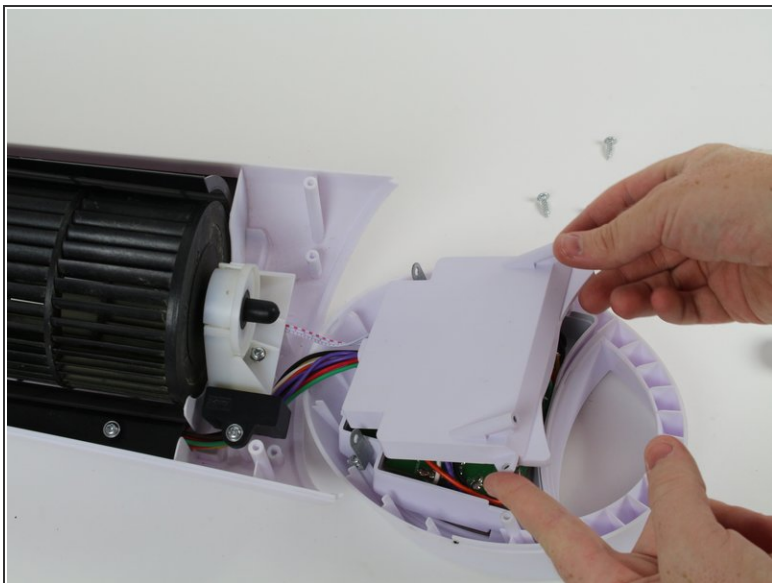
- Use a plastic opening tool or screwdriver to pry off the back of the fan, starting from the top down.
- ⓘ Be aware of two clips inside the fan, towards the bottom third of the fan. If the back appears stuck on certain spots, push inward edges of the front casing around the problematic area.

## Step 5 — Front Panel



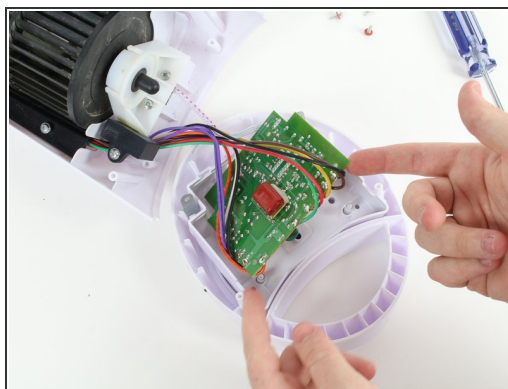
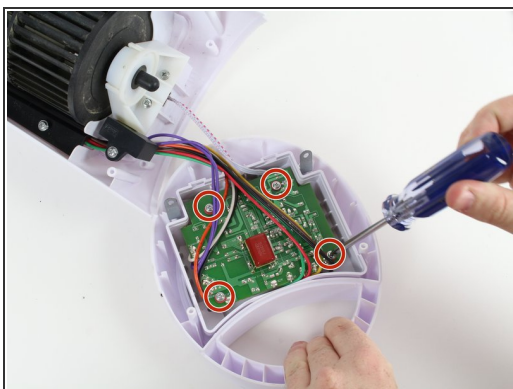
- Remove the four 1/2" Phillips #02 screws, indicated by a red circle.
  - Lean the front panel forwards and set it down.
- ⚠ The front panel will not fully detach and cannot be removed. Do not try to forcibly remove it, as it may cause damage to the electronics.

## Step 6



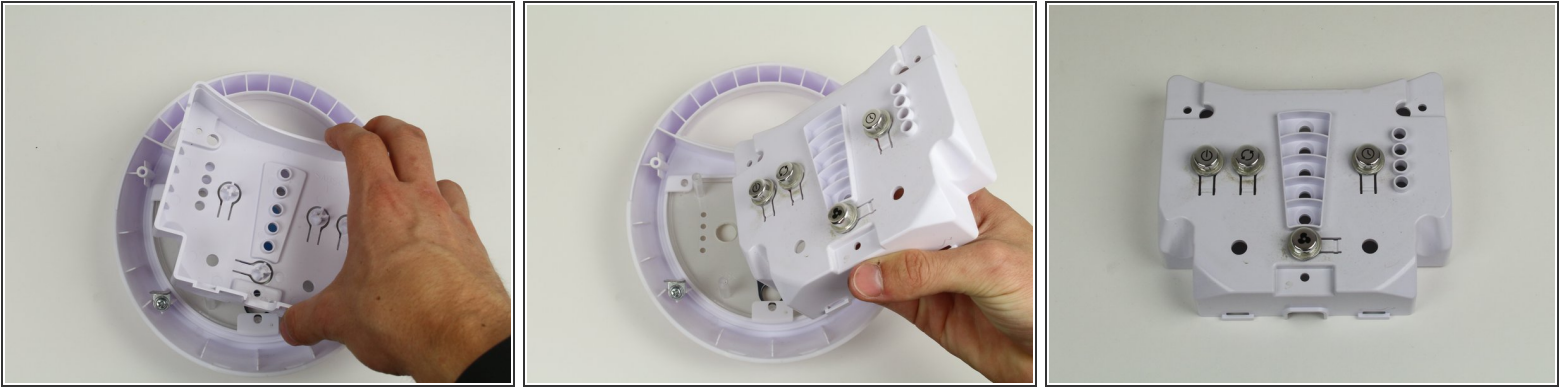
- Gently lift and remove the panel covering the electronics assembly.

## Step 7



- Remove the four 1/2" Phillips #01 screws in the circuit board.
- Gently pull the circuit board off of the rest of the front panel assembly.

## Step 8



- Lift out the internal part of the front panel to access the buttons.

## Step 9



- If necessary, remove the buttons by grabbing them with two fingers and pulling up and away from the panel.
- ⓘ Upon reassembly, ensure buttons are placed in the correct location.

To reassemble your device, follow these instructions in reverse order.