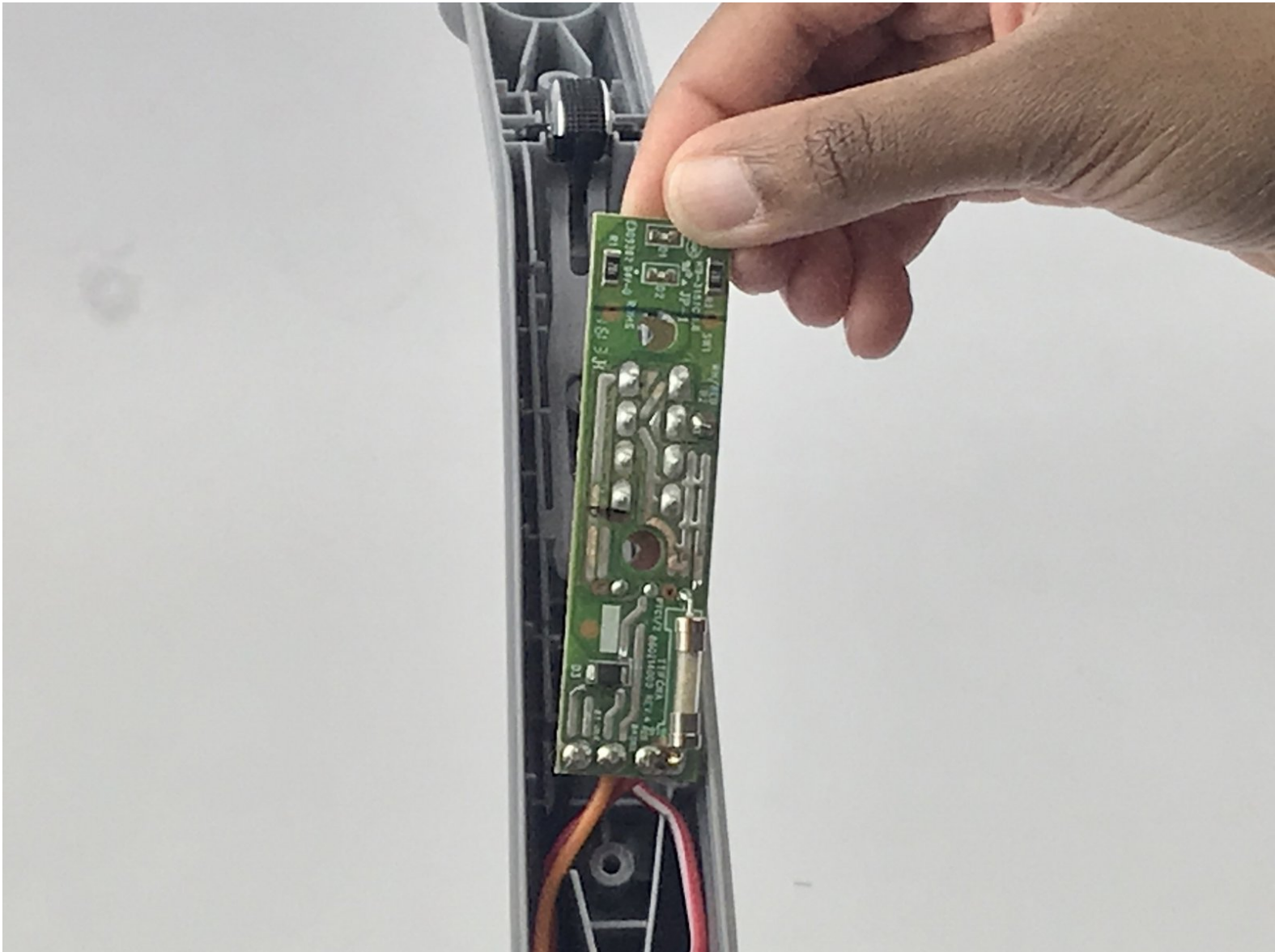




Hoover LiNX The Motherboard Inside The Handle Replacement

Replace a broken motherboard inside of the handle Hoover LiNX.

Written By: Sara Vlhova



INTRODUCTION

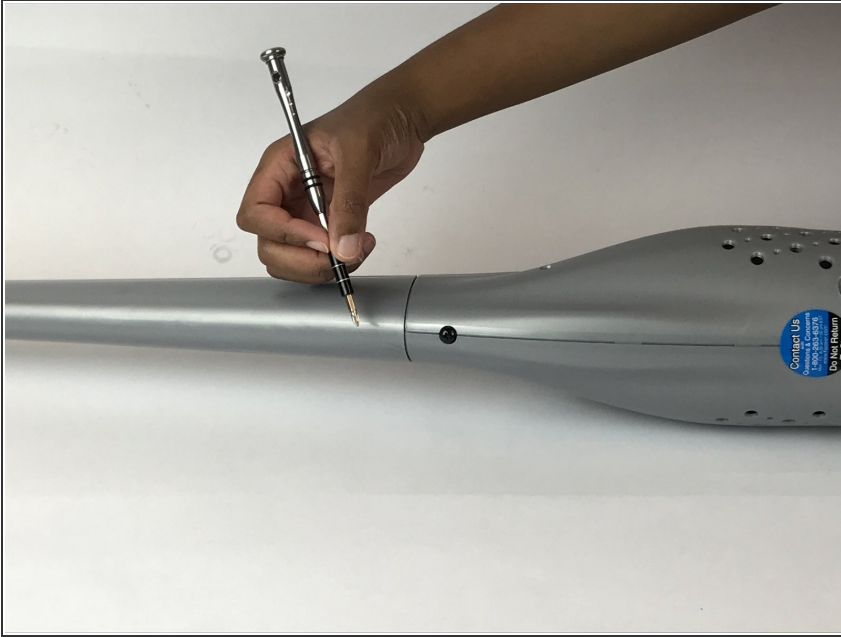
This guide will show you how to open disassemble the handle and replace the motherboard. You might need to do this if the device has power but fails to turn on. Remember to remove the battery from the device.



TOOLS:

- [Phillips #1 Screwdriver](#) (1)
 - [iFixit Plastic Opening Tool](#) (1)
-

Step 1 — Hoover LiNX Handle Teardown



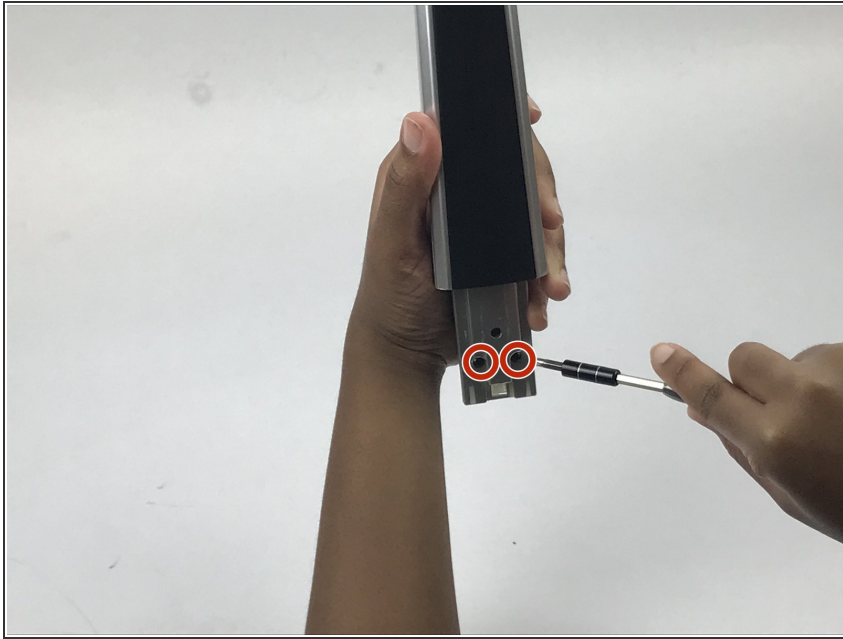
- Remove the single 15mm Phillips #1 screw from the handle.

Step 2



- Remove the handle by pulling it up.

Step 3



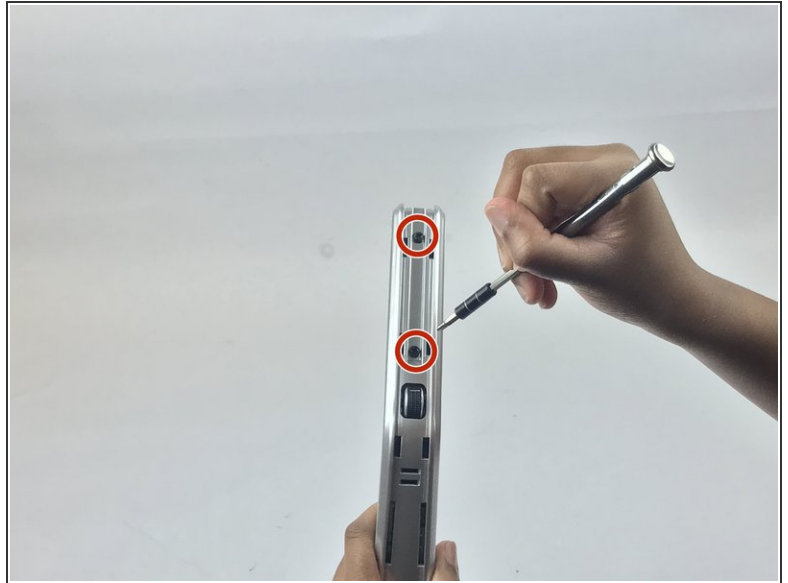
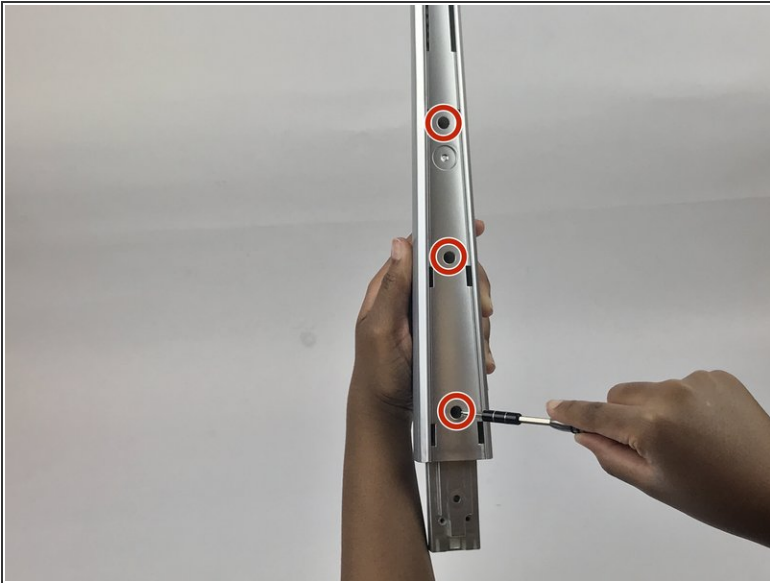
- Remove two 15mm Phillips #1 screws from the handle.

Step 4



- Use a plastic opening tool to carefully pry the black cover off of the handle.

Step 5



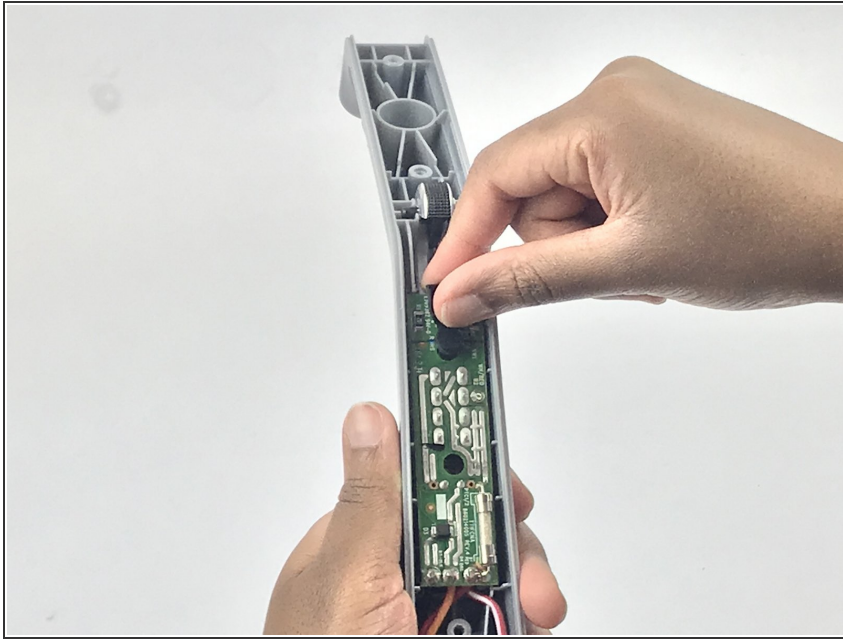
- Remove five 15mm Phillips #1 black screws from the handle.

Step 6



- Remove the silver plastic cover using the plastic opening tool.

Step 7 — The Motherboard Inside The Handle



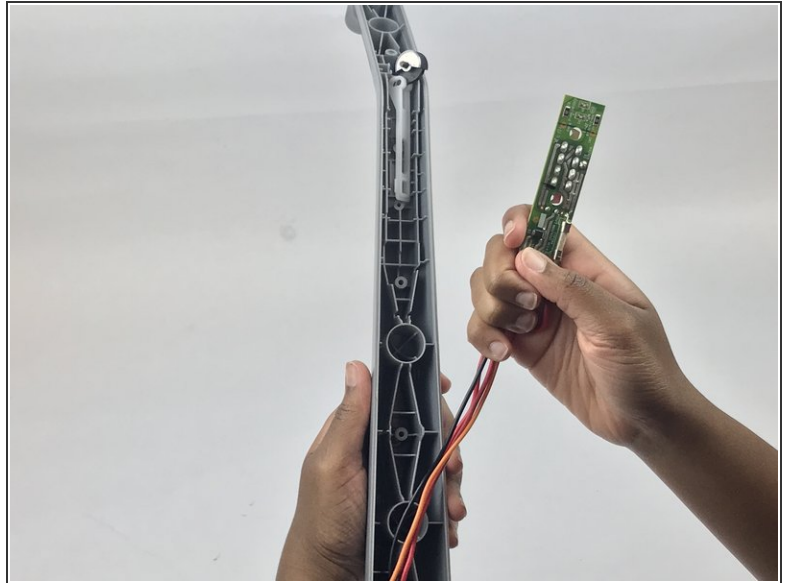
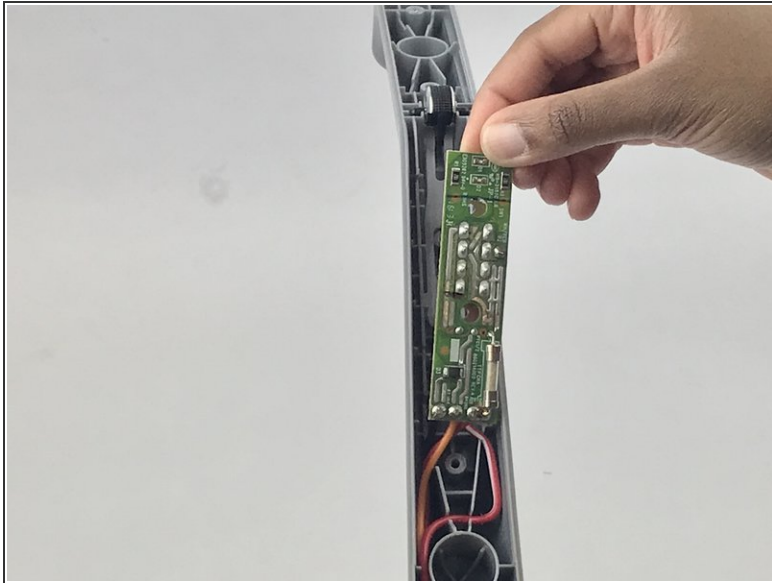
- Remove the black rubber cover from the motherboard.

Step 8



- Remove two 8mm Phillips #1 screws from the motherboard.

Step 9



- Carefully pull the motherboard out with its attached wires.

To reassemble your device, follow these instructions in reverse order.