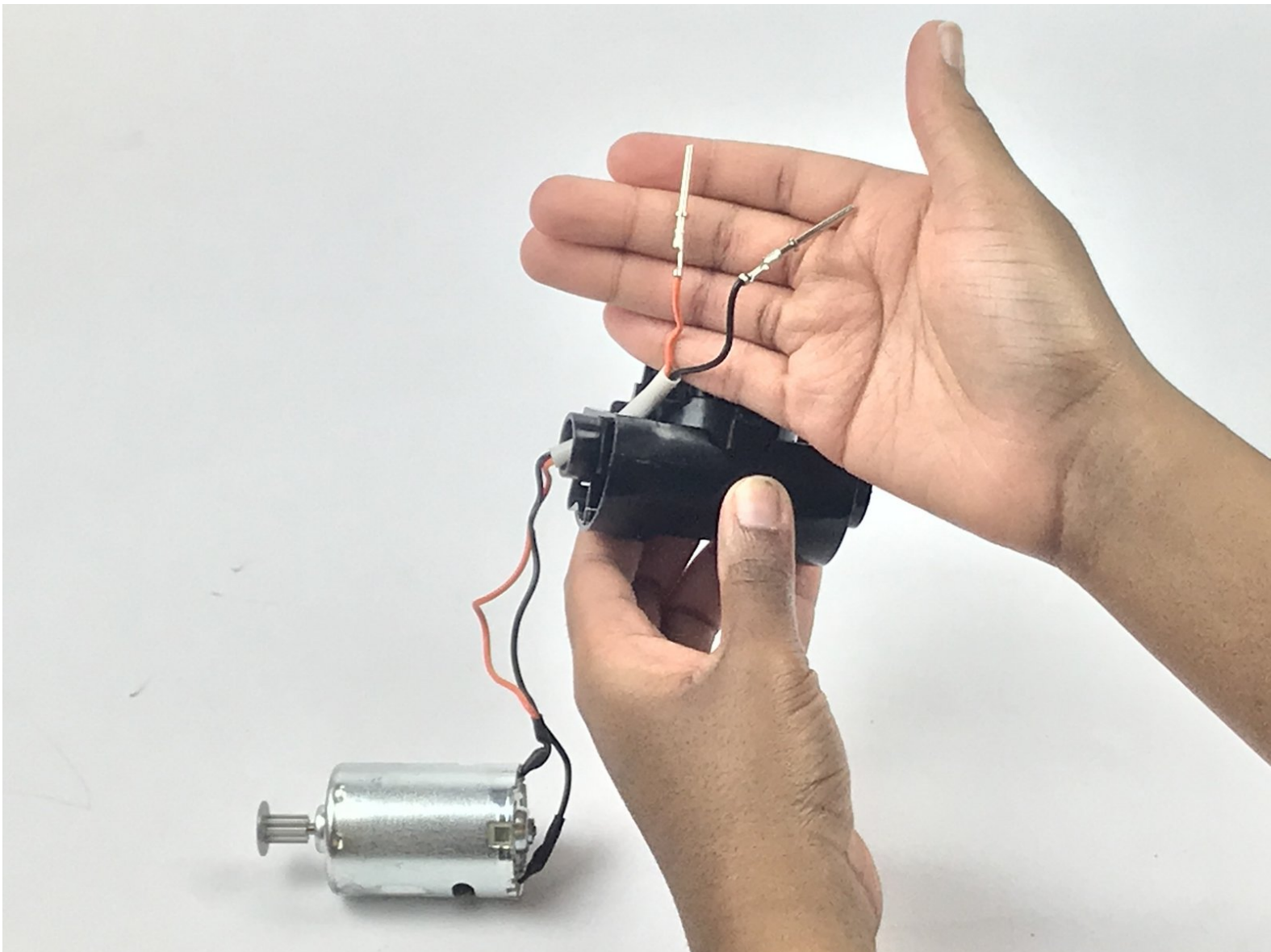




Hoover LiNX The Nozzle Prongs Replacement

Replace broken or bent nozzle prongs in the Hoover LiNX.

Written By: Sara Vlhova



INTRODUCTION

This guide will show you how to replace the nozzle prongs in the motor in the nozzle. This guide would be needed if the prongs on your device are bent out of shape or if they are not transmitting power to the brush roll motor. Remember to remove the battery from the device before starting this guide.



TOOLS:

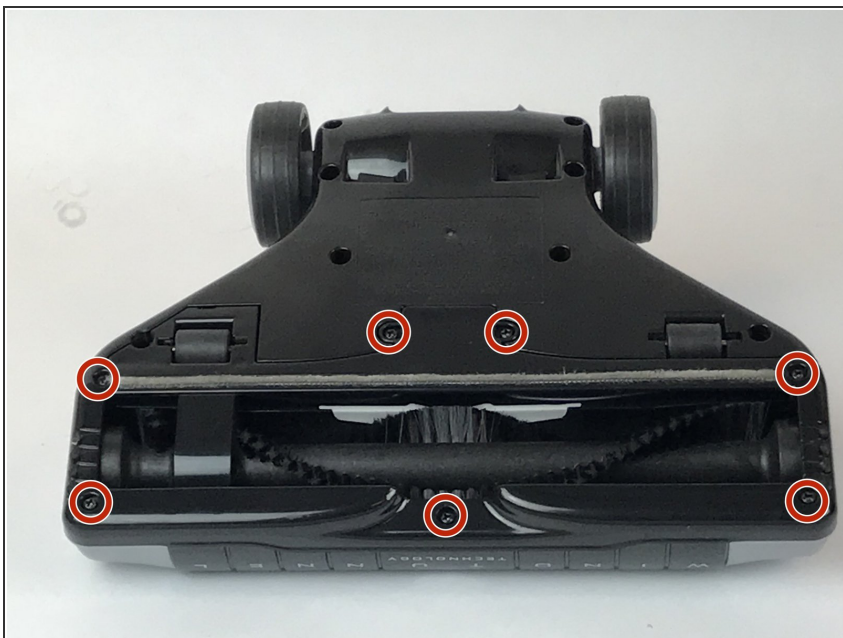
- [Phillips #1 Screwdriver](#) (1)
 - [iFixit Opening Tools](#) (1)
-

Step 1 — Replace The Motor



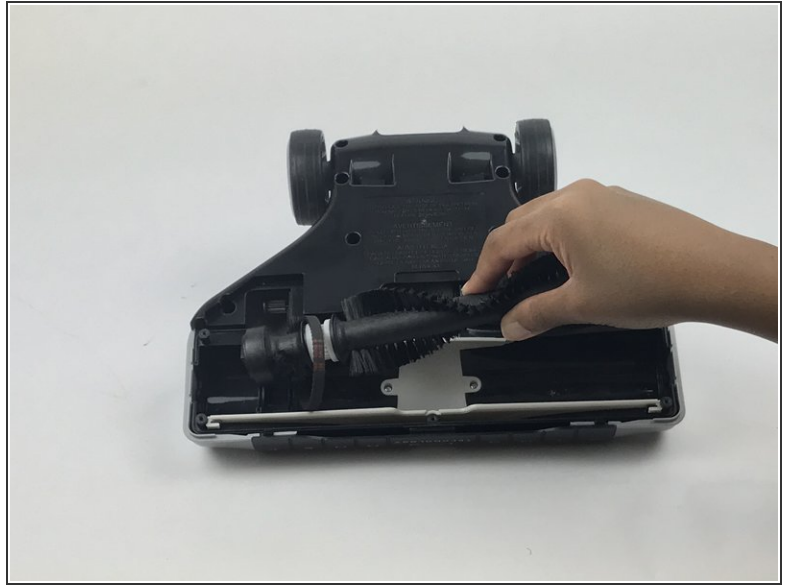
- Detach the rolling assembly from the body by pushing the button found at the base.

Step 2



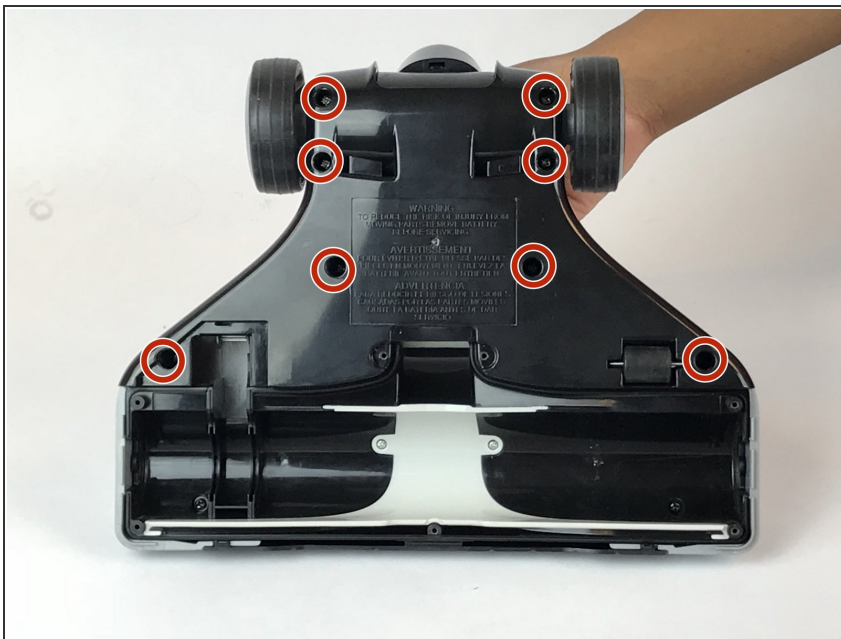
- Remove the seven 7.5mm Phillips #1 screws from the brush retainer.

Step 3



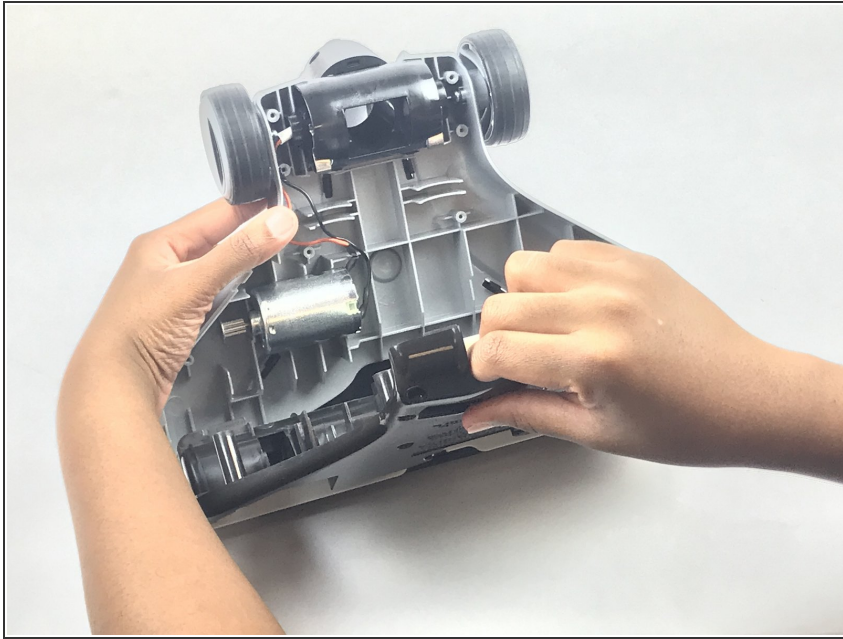
- Remove the brush and retainer from the rolling assembly.
- ⓘ The brush will need to be disconnected from the belt.

Step 4



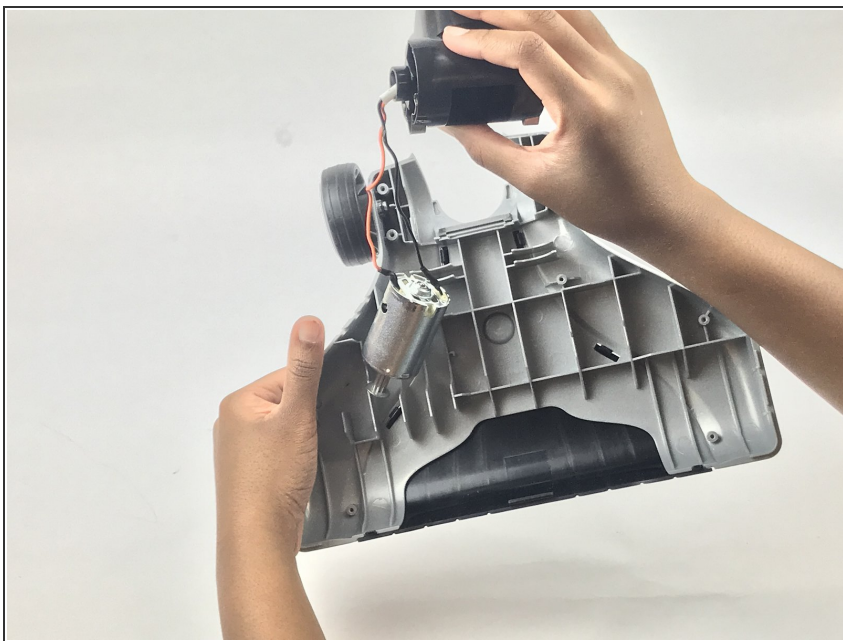
- Remove the eight 4mm Phillips #1 screws from the bottom panel.

Step 5



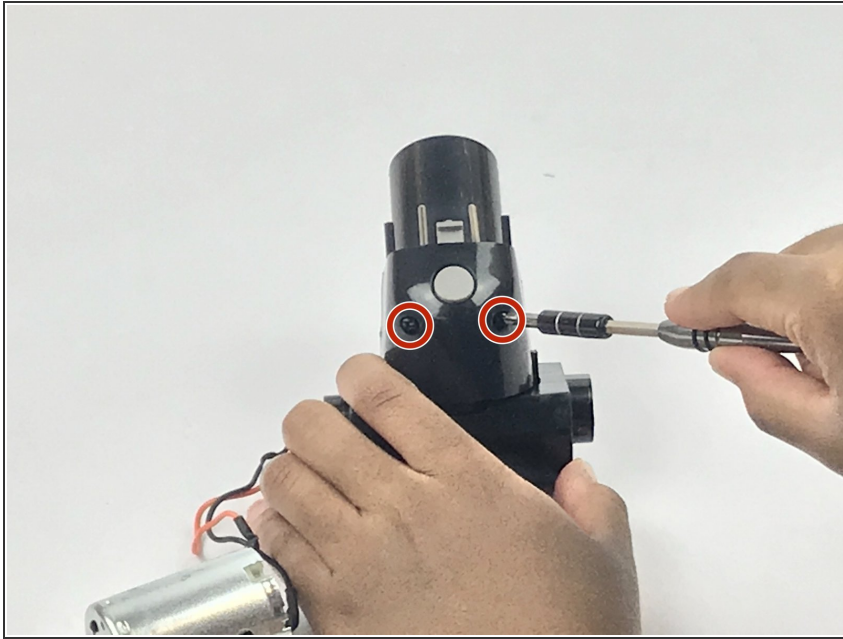
- Remove the bottom panel.

Step 6



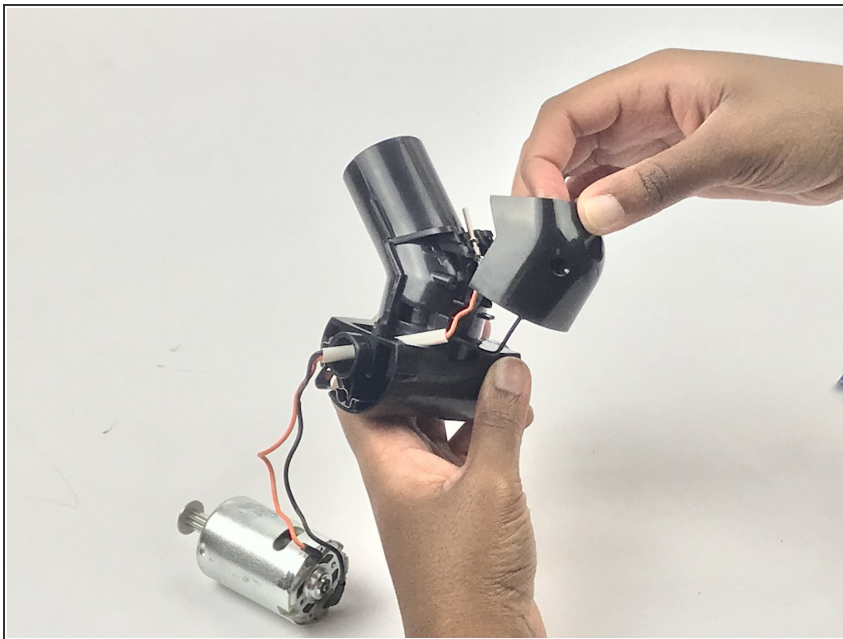
- Remove the motor.

Step 7 — The Nozzle Prongs



- Remove the two 7.5mm Phillips #1 screws from the main body.

Step 8



- Remove the black covering from the air tube.

Step 9



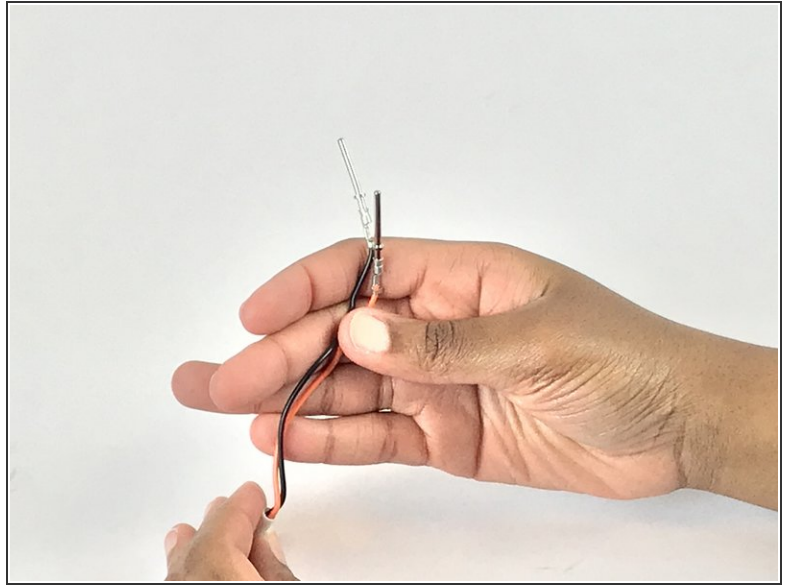
- Slide the prongs out through their channels.

Step 10



- Remove the angled neck and feed the prongs out through their channels.

Step 11



- Replace the prongs.

To reassemble your device, follow these instructions in reverse order.