



Hoover T-Series WindTunnel Pet UH30310

Brush Replacement

Use this guide to replace the brush in the head of the vacuum.

Written By: Erik Ingels



INTRODUCTION

Use this guide to replace the brush in the head of the vacuum.

TOOLS:

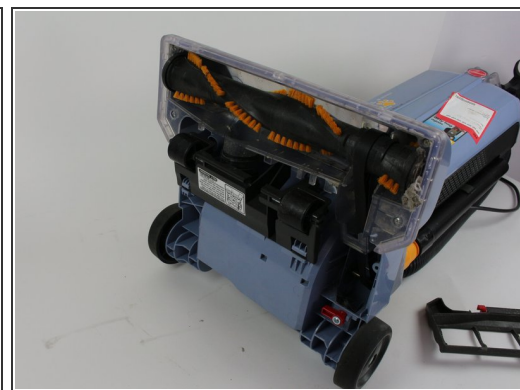
- [Phillips #1 Screwdriver](#) (1)
-

Step 1 — Brush



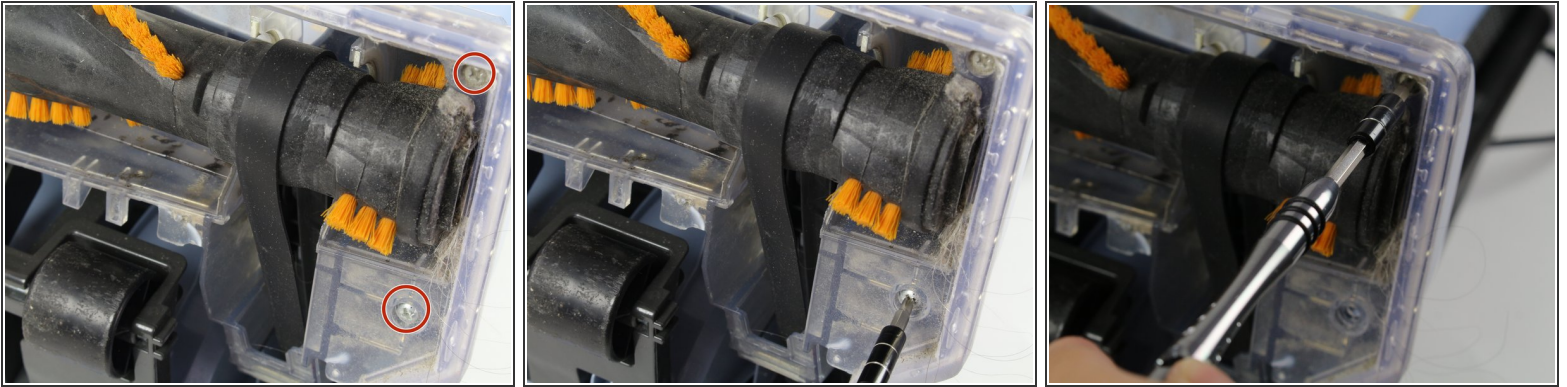
- Place the vacuum on its back.
- On the bottom right side, push the red lever to the left.
- Remove the plastic cover.

Step 2



- Grab the red switch under the brush and push left.
- Then remove the plastic base plate.

Step 3



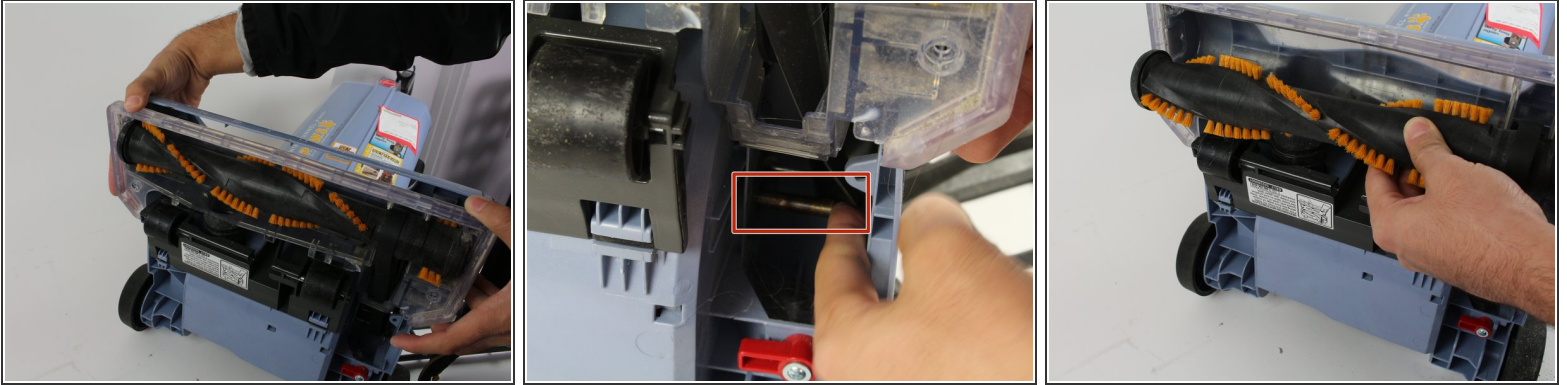
- Use a Phillips #1 screwdriver to remove the two screws on the right side of the brush.

Step 4



- Remove the two screws on the left side of the brush.

Step 5



- Pull the clear plastic away from the head of the vacuum.
- Slide the belt off the metal rod with your finger.
- Pull the brush free.

To reassemble your device, follow these instructions in reverse order.