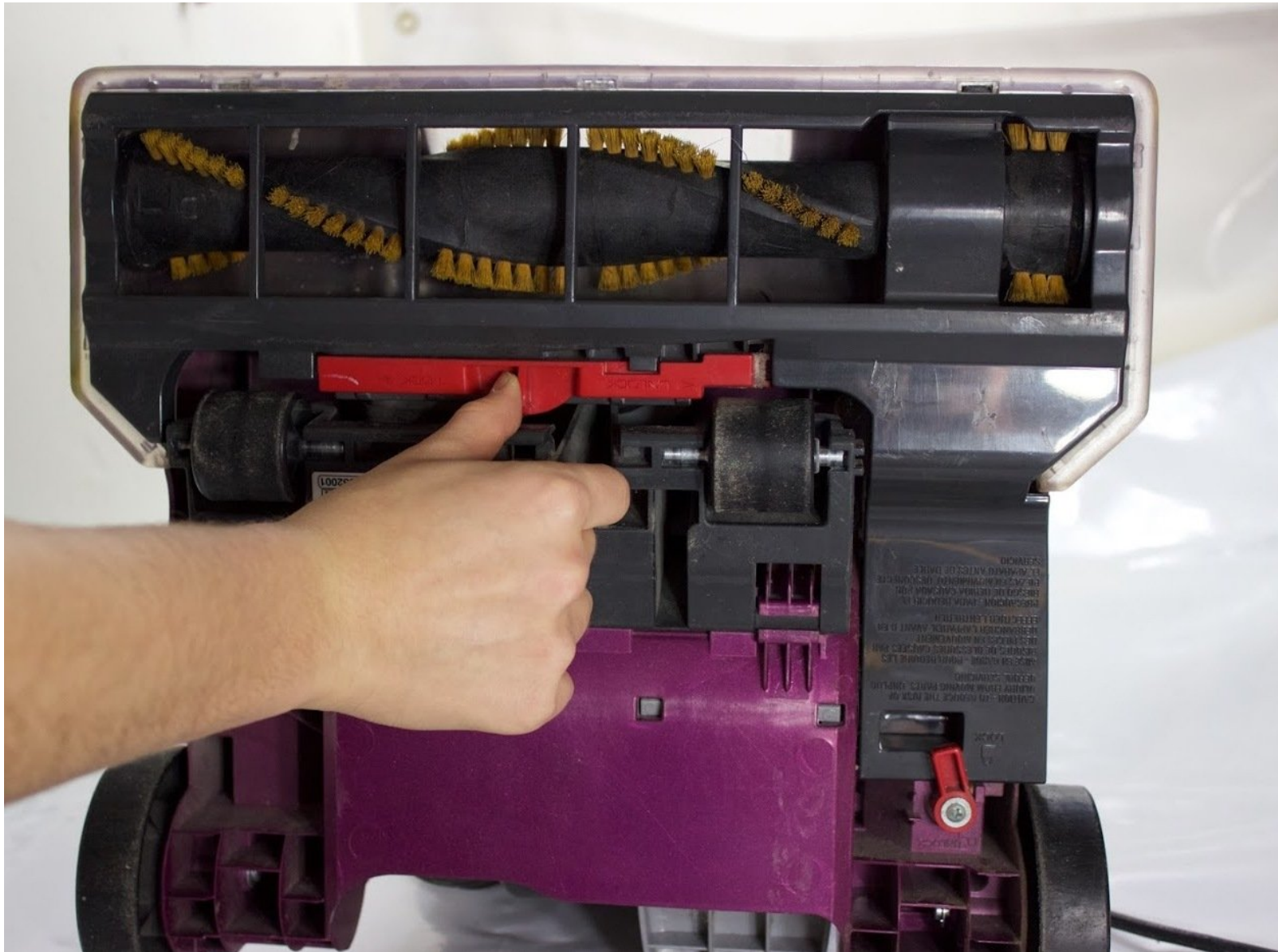




Hoover T-Series WindTunnel Pet UH70102 Brush Roll Replacement

How to replace the brush roll on your vacuum.

Written By: Sophia Stockburger



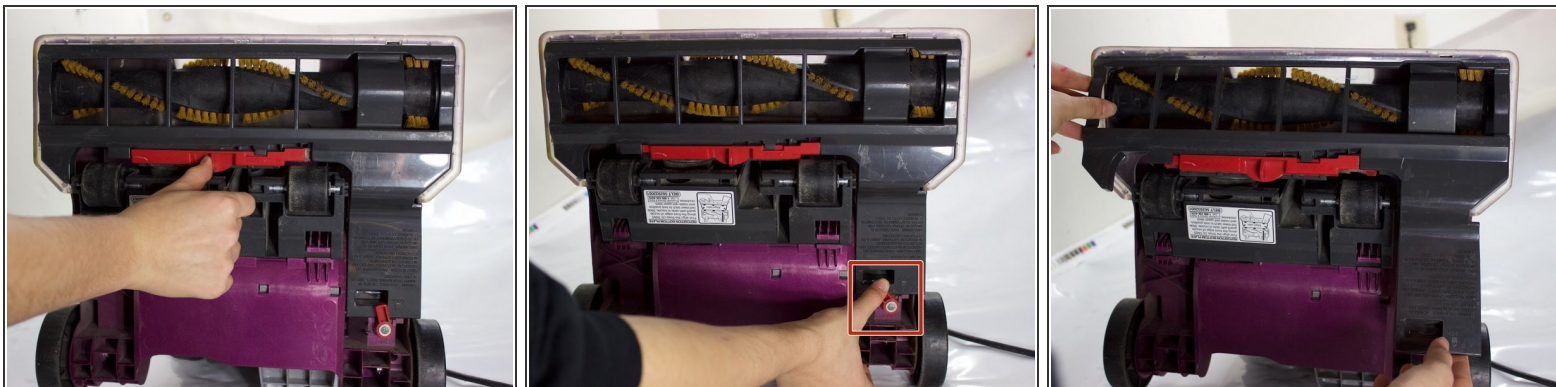
INTRODUCTION

This guide is intended to help you replace the brush roll on your vacuum. Please see the troubleshooting guide to determine if this needs replacement. Begin this step with the vacuum unplugged, and laying on the floor with the bottom facing towards you.

TOOLS:

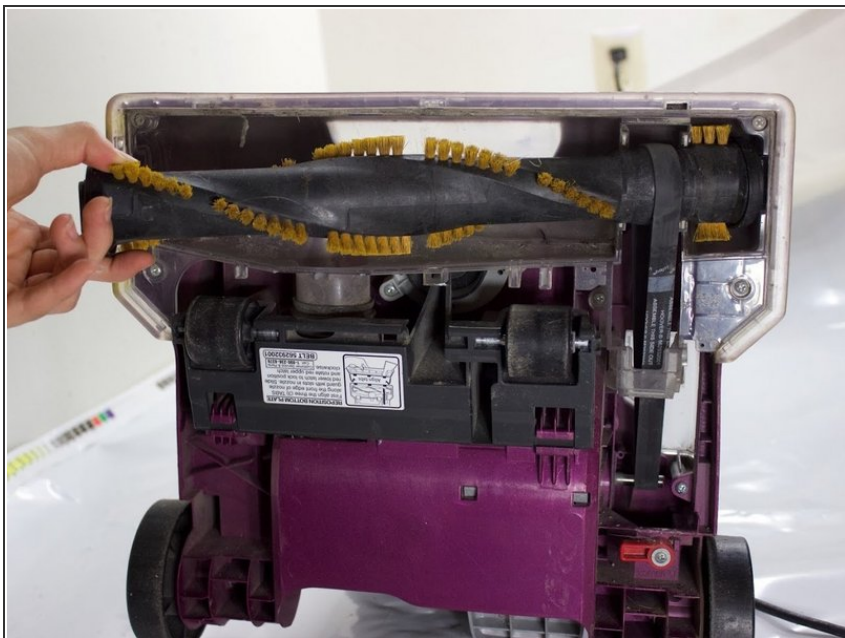
- [Brush to clean](#) (1)
 - [Fingers](#) (1)
-

Step 1 — Brush Roll



- Push the red release lever to the right.
- Turn the red switch counterclockwise.
- Tilt the bottom of the plastic tray out towards you and pull it off the vacuum.

Step 2



- Pull the brush roll out of vacuum.
- Remove the belt from brush roller

To reassemble your device, follow these instructions in reverse order.