



Hornady Lock-n-load Auto Charge L298n Replacement

hornady lock n load auto charge Motor issue

Written By: Brent Felzien



INTRODUCTION

Hornady lock n load auto charge

Having issues with Motor not running

Inconsistent speeds/ jerking around.

install new IC to fix the issue

Clean Brushes on Motor



TOOLS:

- [Phillips #1 Screwdriver](#) (1)
- [Soldering Iron](#) (1)
- [Desoldering Pump](#) (1)



PARTS:

- [L298n ic](#) (1)
- [Heat sink for L298n](#) (1)

Step 1 — Overview



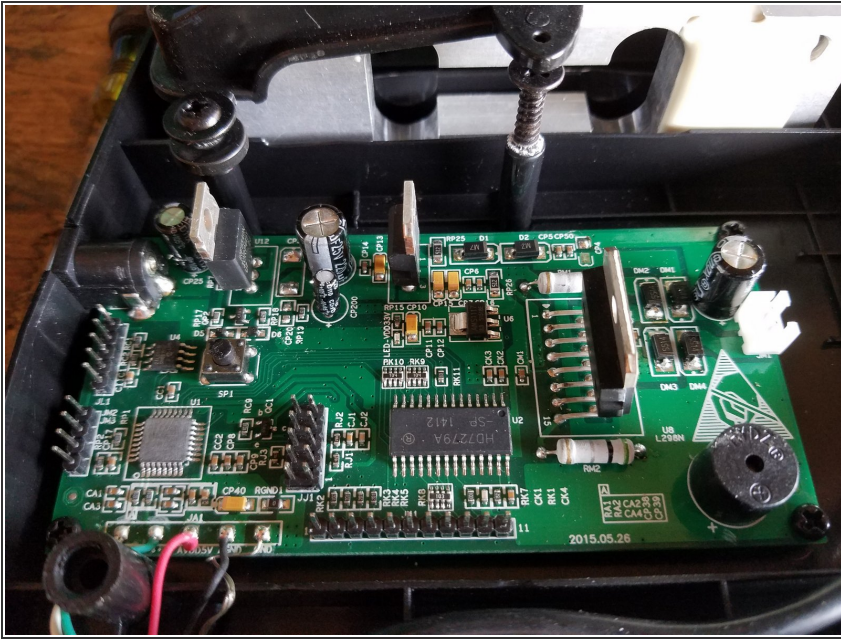
- Hornady Auto Charge

Step 2



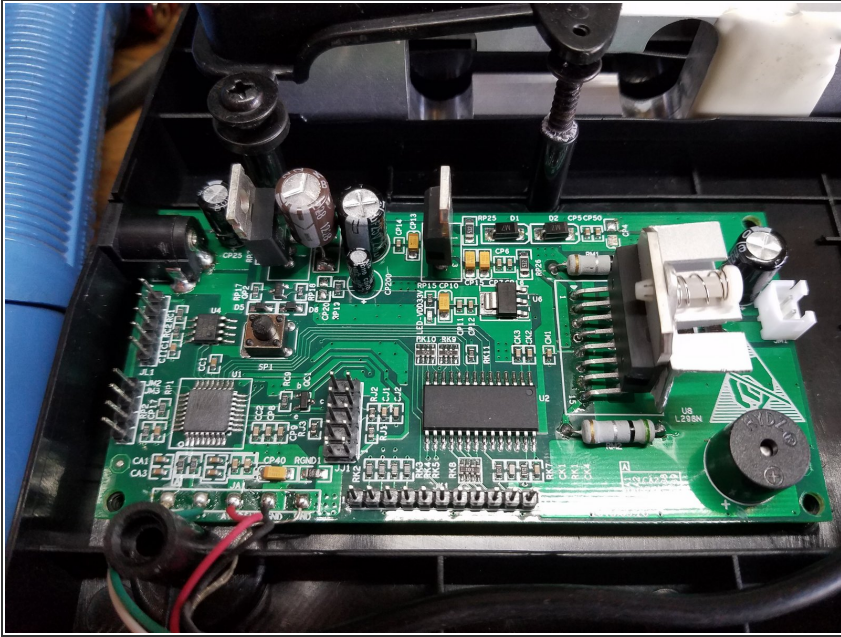
- Empty Powder out
- Remove anything that will fall out when you turn it over to get to the 6 phillips screws in the bottom
- remove the 4 round foam feet to exposed the screws. unscrew the 6 screws

Step 3



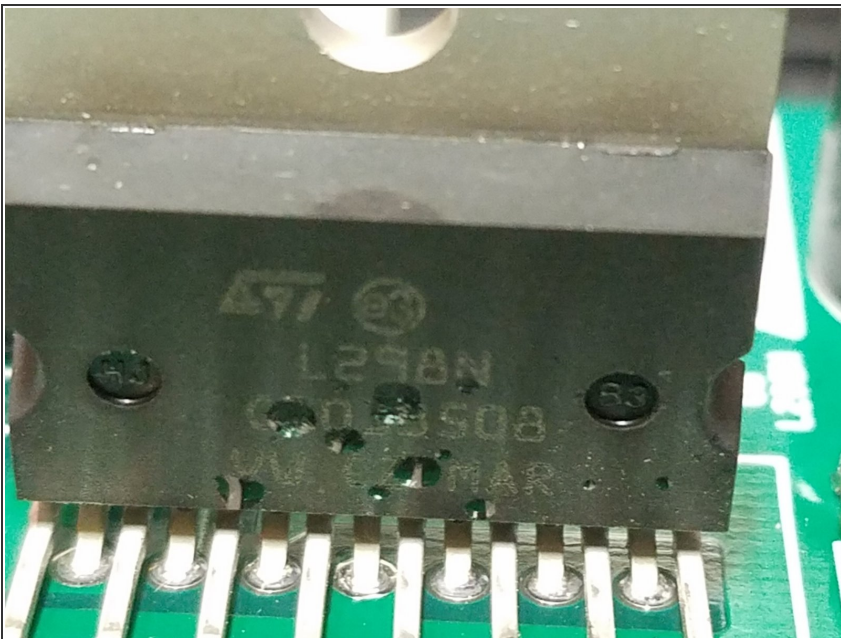
- slowly separate the black bottom from the red top. there is a motor connector, screen connector, and 2 connector for the keypad.

Step 4



- There is 1 circuit board and you can see the L298n on the right side. take circuit board out and unsolder the L298n. install New L298n with Heat sink . and reassemble.

Step 5 — Damaged L298N



- You can see the damage to the L298N
- required a new Motor Controller IC. This happened loading 300 Cartridges back to back. Duty Cycle was to much. ADDED heat sink is a must if loading may Cartridges!!!

Step 6



- when testing after new IC was installed
- Motor would Jerk and was not smooth. disassemble motor and clean brushes.

To reassemble your device, follow these instructions in reverse order.