



Hott T725-8G Screen/Display Replacement

Use this guide to replace the screen or display on the Hott T725-8G. You will need this [<https://www.ifixit.com/Guide/Hott+T725-8G+Back+Panel+Replacement/74840>] Prerequisite Guide] before you begin.

Written By: Emma Carroll



INTRODUCTION

This guide will walk you through replacing the screen or display on your Hott T725-8G.

You will need to use the two replacement guides below:

[Battery Replacement Guide](#)

[Motherboard Replacement Guide](#)



TOOLS:

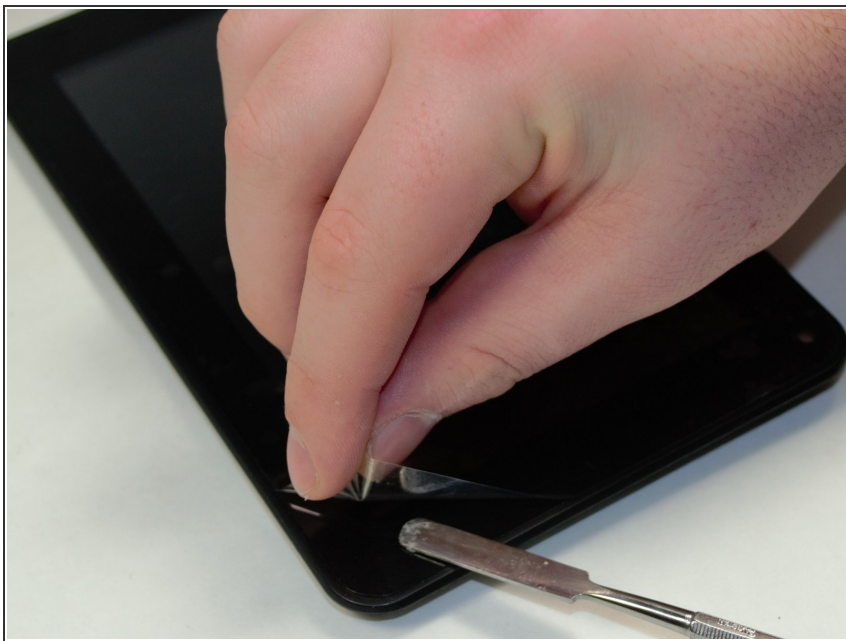
- [iFixit Opening Tools](#) (1)
- [Phillips #000 Screwdriver](#) (1)
- [Tweezers](#) (1)
- [Metal Spudger Set](#) (1)
- [Heavy-Duty Spudger](#) (1)



PARTS:

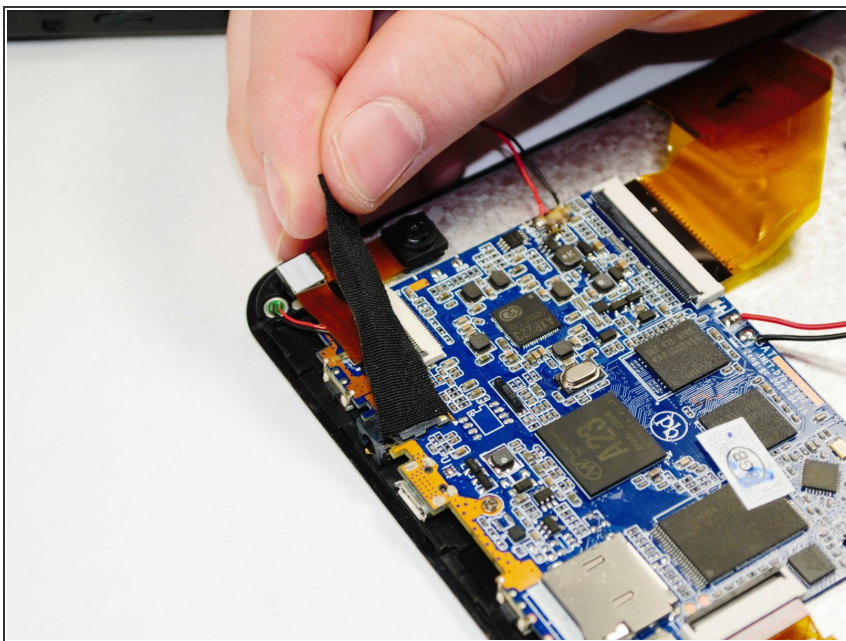
- [LCD Display 5-Point Touch Screen](#) (1)
- [7" Capacitive Touch Screen Digitizer Panel](#) (1)
- [Universal Android Replacement Battery](#) (1)
- [Replacement Android Motherboard](#) (1)

Step 1 — Screen/Display



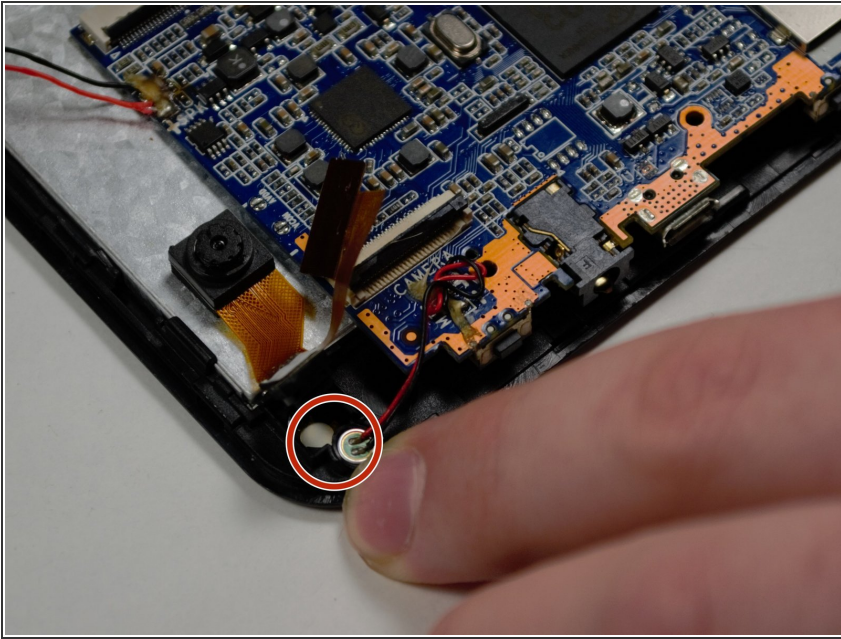
- Use the Metal Spudger tool and your fingers to peel off any existing screen protector.

Step 2



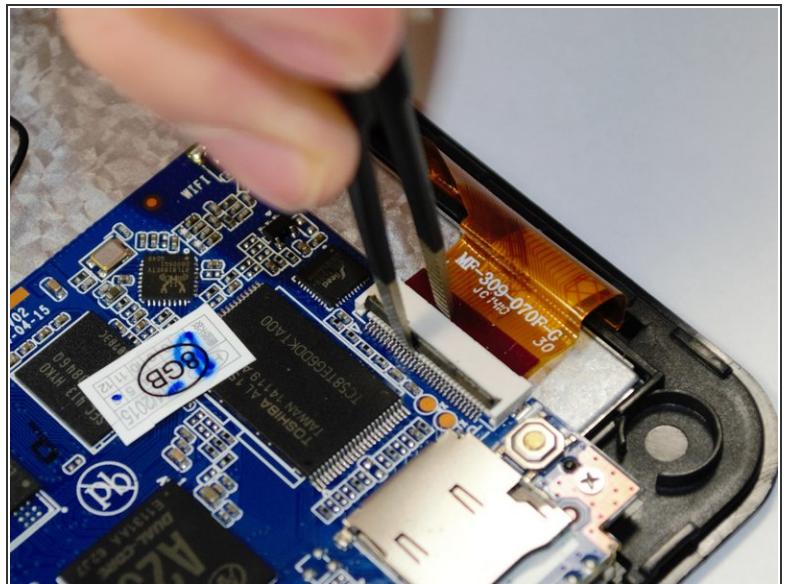
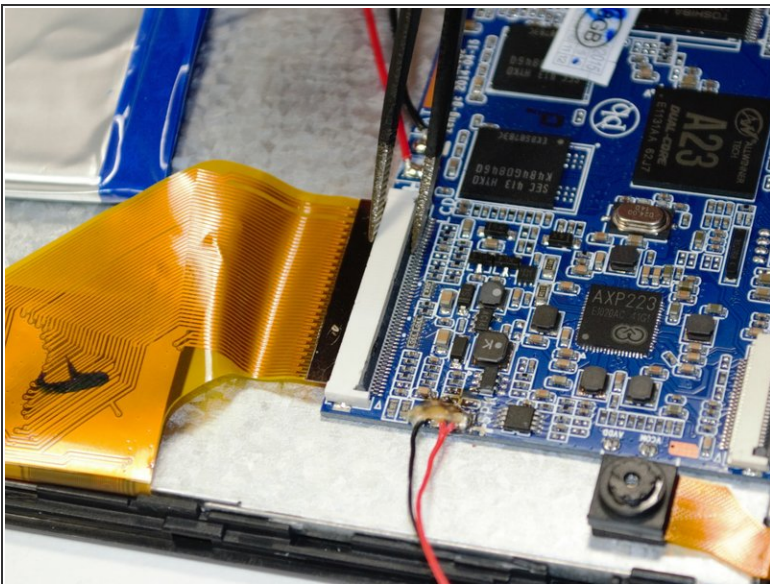
- Remove black electrical tape to release the sensor and ribbon wires connecting the camera to the motherboard.

Step 3



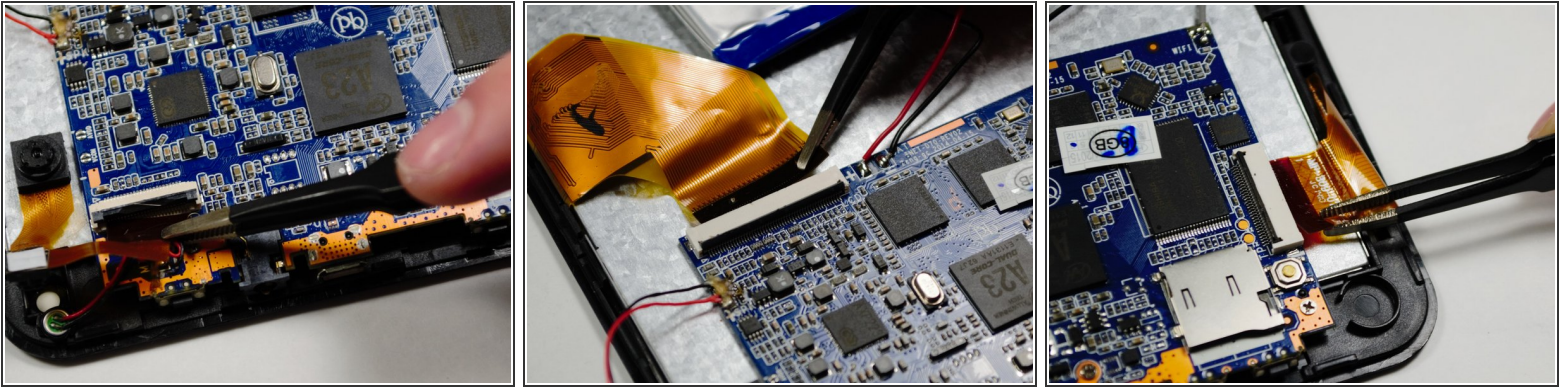
- Dislodge the sensor from the front panel.

Step 4



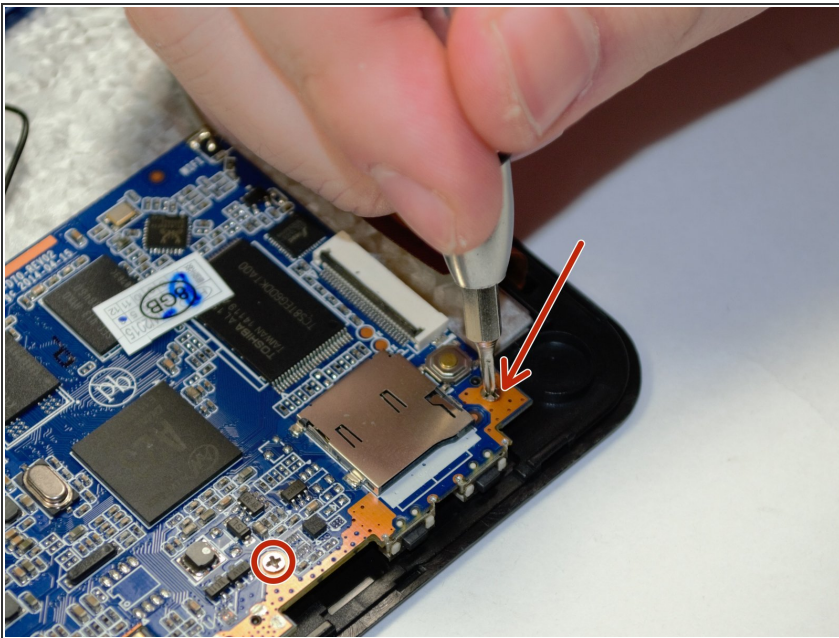
- Use a pair of Precision Tweezers to squeeze the clip of the ribbon wire to release it.

Step 5



- Using a pair of the Precision Tweezers, remove the ribbon wire from the clip.

Step 6



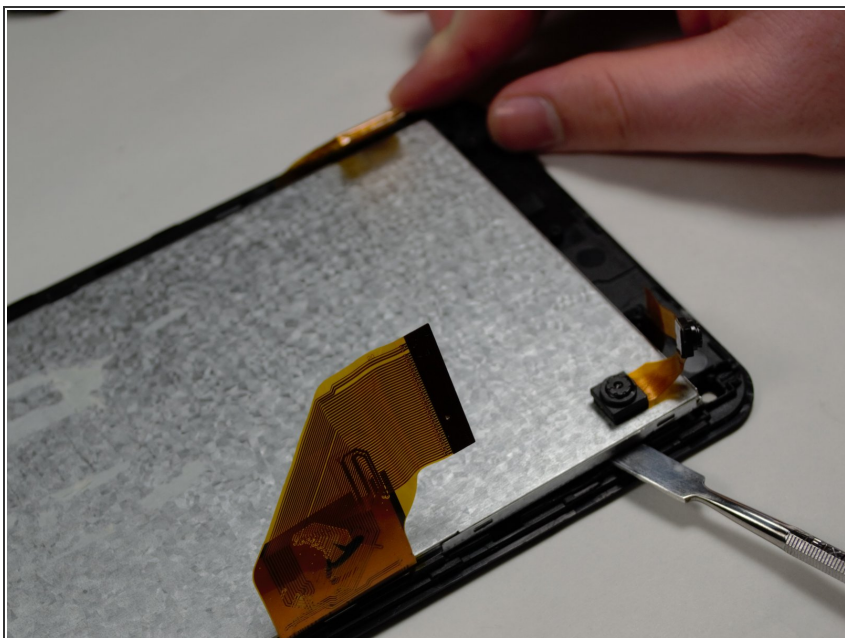
- Follow the guide to remove the motherboard from the back of the display.

Step 7



- Follow the guide to remove the battery from the back of the display.

Step 8



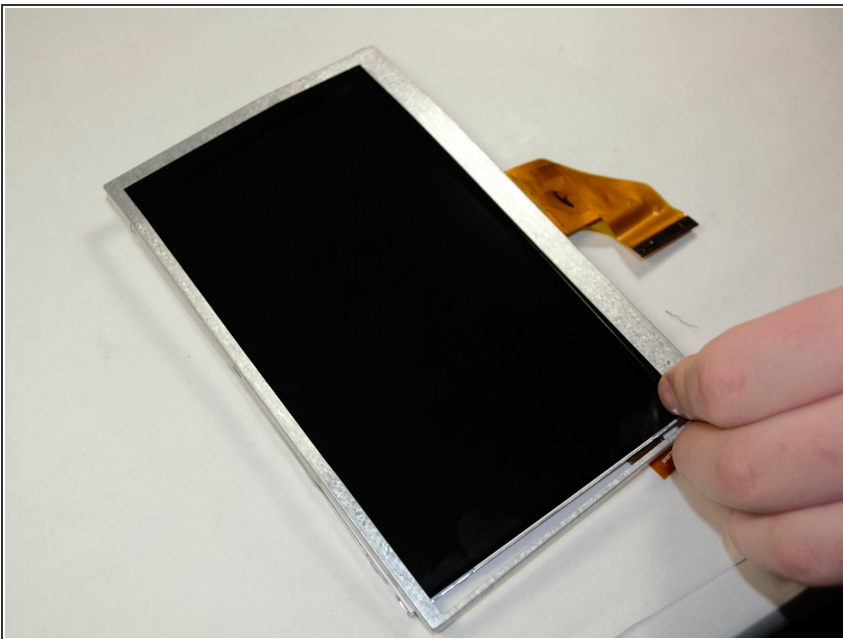
- With the motherboard and battery detached, use the Metal Spudger tool to gently remove the display from the front panel.

Step 9



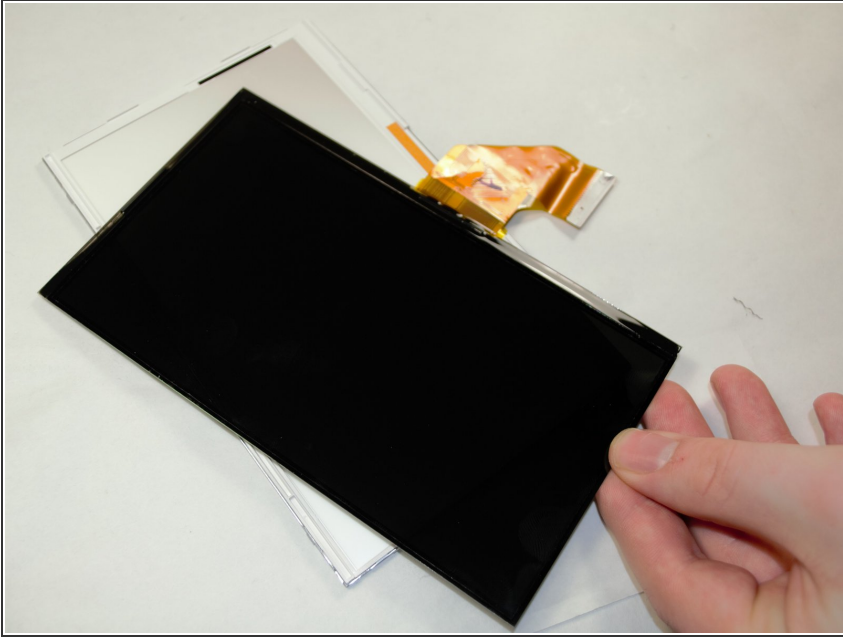
- Remove Digitizer Panel from the front panel.

Step 10



- Remove the LCD 5-Point Touch Screen from the display case.

Step 11



- Remove the display from the plastic casing. The screen is now ready for replacement.

To reassemble your device, follow these instructions in reverse order.