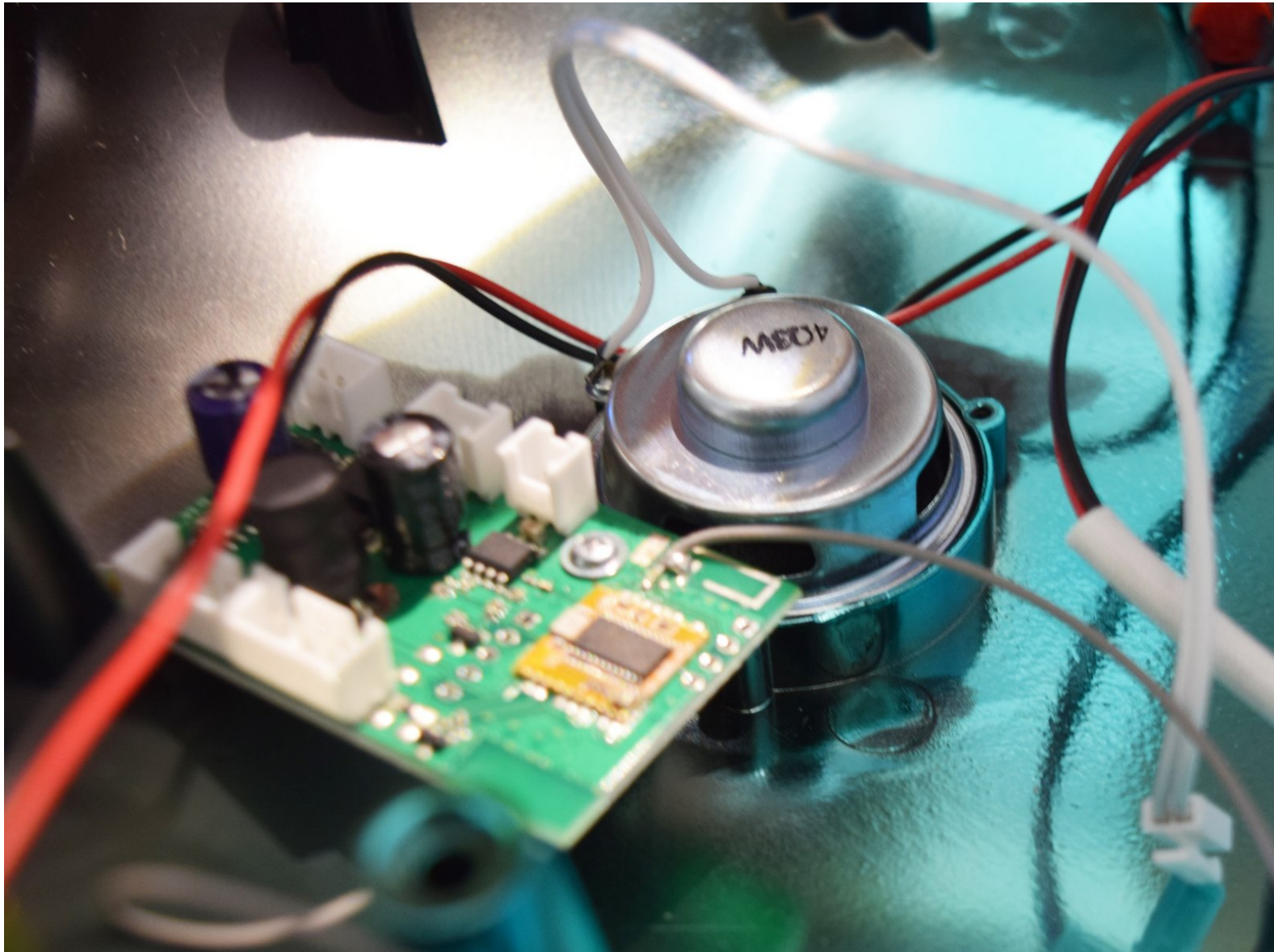




Hover 1 Eclipse Bluetooth Speaker Replacement

Remove the Bluetooth speaker in the bottom shell of the hoverboard.

Written By: Mina Dedijer



INTRODUCTION

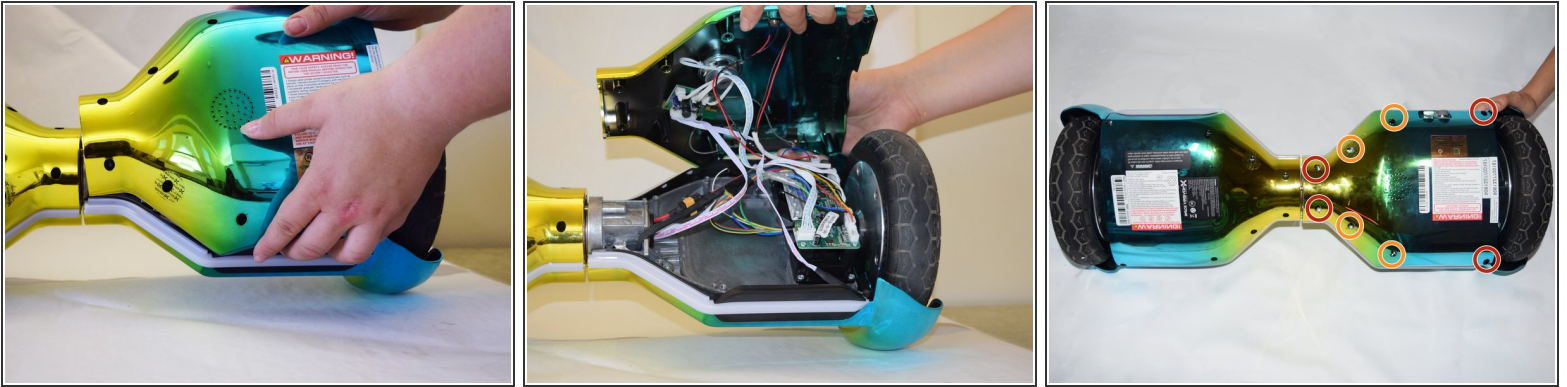
This guide will teach you how to replace the Bluetooth speaker on your Hover 1 Eclipse. Your speaker will need replacing if it is malfunctioning or has been damaged. To replace your speaker you must have basic knowledge of how to use a screwdriver. You must also be careful when detaching the headers from the motherboards, as they have small fragile pins that can not be bent.



TOOLS:

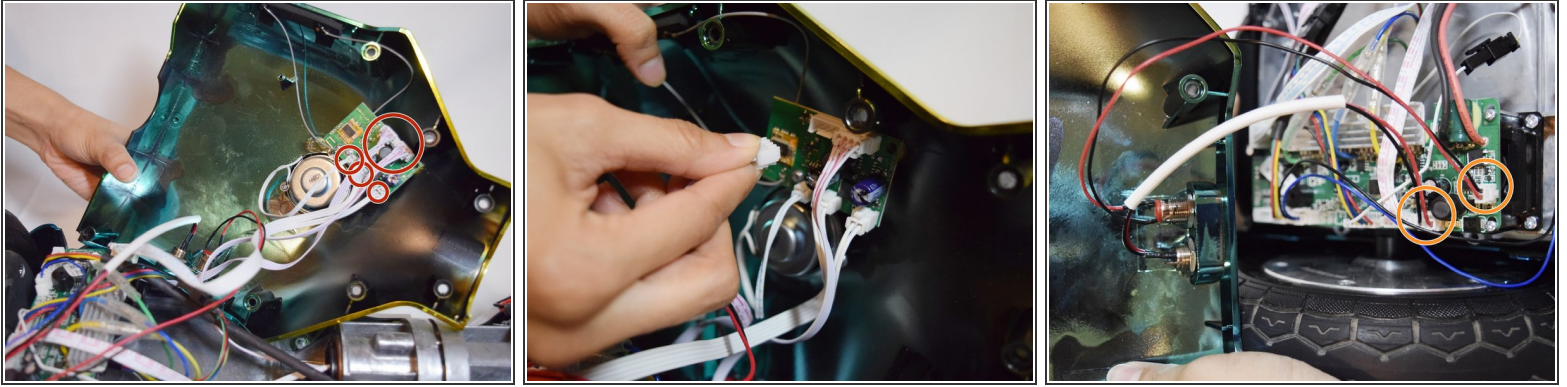
- [Phillips #0 Screwdriver](#) (1)
 - [Phillips #1 Screwdriver](#) (1)
-

Step 1 — Bluetooth Speaker



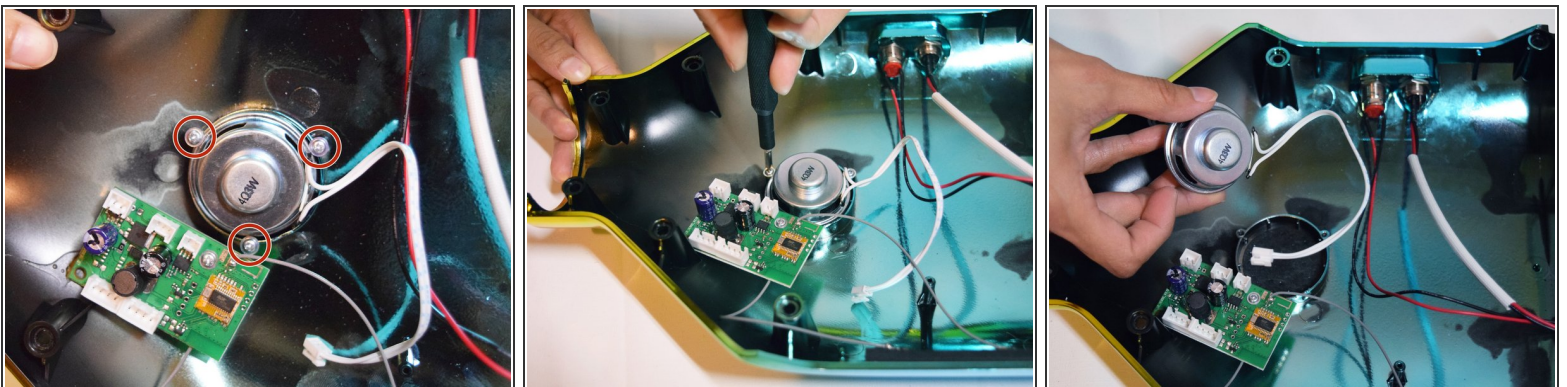
- Using a Phillips #1 Screwdriver, remove the four 11mm screws that surround the edge of the plug side bottom shell piece.
- Using a Phillips #1 Screwdriver, remove the four 13mm screws that surround the edge of the plug side bottom shell piece.
- Remove the plug side bottom shell piece

Step 2



- within the plug side shell piece, there are two white and pink wires connecting the shell and the motherboard.
- On the circuit board by the speaker, carefully squeeze and unplug the small white headers that connect the shell piece to the hoverboard body.
- On the body of the board, follow the wires that connect the lights to the motherboard. Disconnect these wires from the motherboard by squeezing and pulling the small white headers.
- Now you can fully remove the shell piece.

Step 3



- Using a Phillips #0 Screwdriver, remove the 3 screws holding the speaker to the shell.
- Lift the speaker out from the casing.

To reassemble your device, follow these instructions in reverse order.